

AZ10EL89

PECL/ECL Coaxial Cable Driver

www.azmicrotek.com

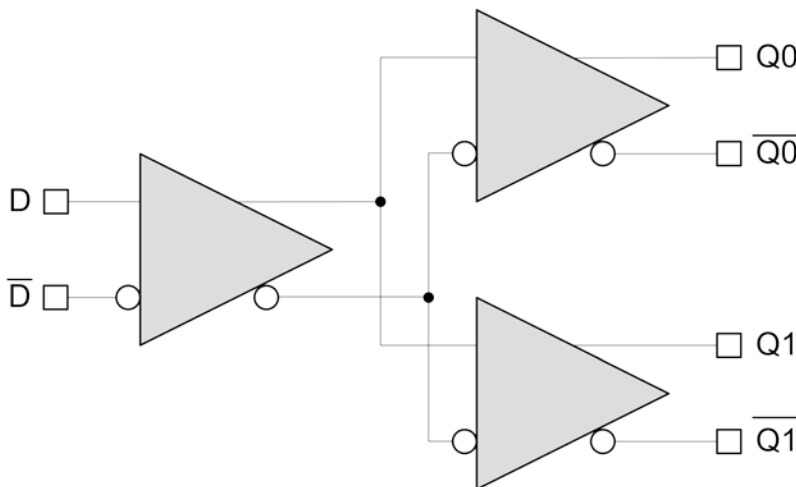
DESCRIPTION

The [AZ10EL89](#) is a differential fan-out gate specifically designed to drive coaxial cables. The device is especially useful in digital video applications. In such applications, each output can be used as an independent driver since the system is polarity free.

The driver has a voltage gain of approximately 40 and produces an output swing twice as large as standard ECL output. The driver accepts a standard differential ECL input and can run off of the Digital Video Broadcast standard -5.0V supply.

The AZ10EL89 is a direct replacement for the ON Semi MC10EL89

BLOCK DIAGRAM



FEATURES

- Direct Replacement for ON Semi MC10EL89
- 1.6V output swing
- 375ps propagation delay
- Internal input pull-down resistors

APPLICATIONS

- Digital Video Broadcasting

PACKAGE AVAILABILITY

- SOIC8
- Green/RoHS Compliant/Pb-Free

Order Number	Package	Marking
AZ10EL89DG ¹	SOIC8	AZM10EL89G ²

¹ [Tape & Reel](#) - Add 'R1' at end of order number for 7in (1k parts), 'R2' (2.5k) for 13in

² See www.azmicrotek.com for [date code format](#)

PIN DESCRIPTION AND CONFIGURATION

Table 1 - Pin Description

Pin	Name	Type	Function
1	Q_0	Output	Data Output (1.6V _{PP})
2	\bar{Q}_0	Output	Data Output (1.6V _{PP})
3	Q_1	Output	Data Output (1.6V _{PP})
4	\bar{Q}_1	Output	Data Output (1.6V _{PP})
5	V_{EE}	Power	Negative Supply
6	\bar{D}	Input	Data Input
7	D	Input	Data Input
8	V_{CC}	Power	Positive Supply

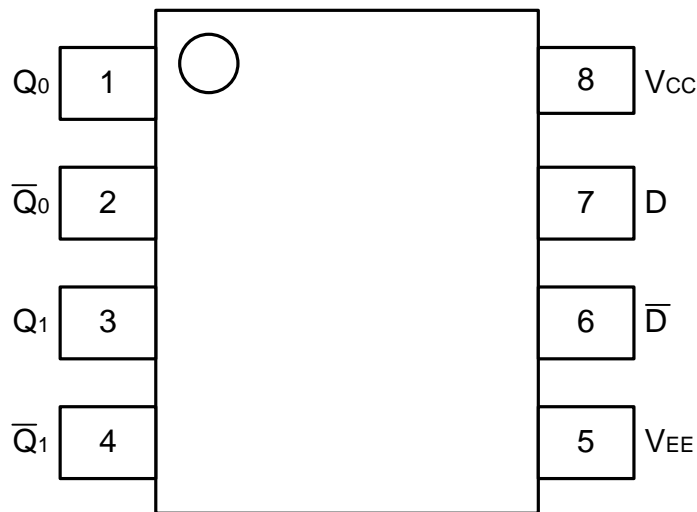


Figure 1 - Pin Configuration for SOIC8

ENGINEERING NOTES

When driving a coaxial cable, proper termination is required at both ends of the line to minimize signal loss. The 1.6 V output swing allows for termination at both ends of the cable, while maintaining the required 800mV swing at the receiving end of the cable. Because of the larger output swings, the device cannot be terminated into the standard $V_{CC} - 2.0V$. All of the DC parameters are tested with a 50Ω to $V_{CC} - 3.0V$ load. The driver accepts a standard differential ECL input and can run off of the Digital Video Broadcast standard $-5.0V$ supply. Under open input conditions (pulled to V_{EE}) internal input clamps will force the Q outputs LOW.

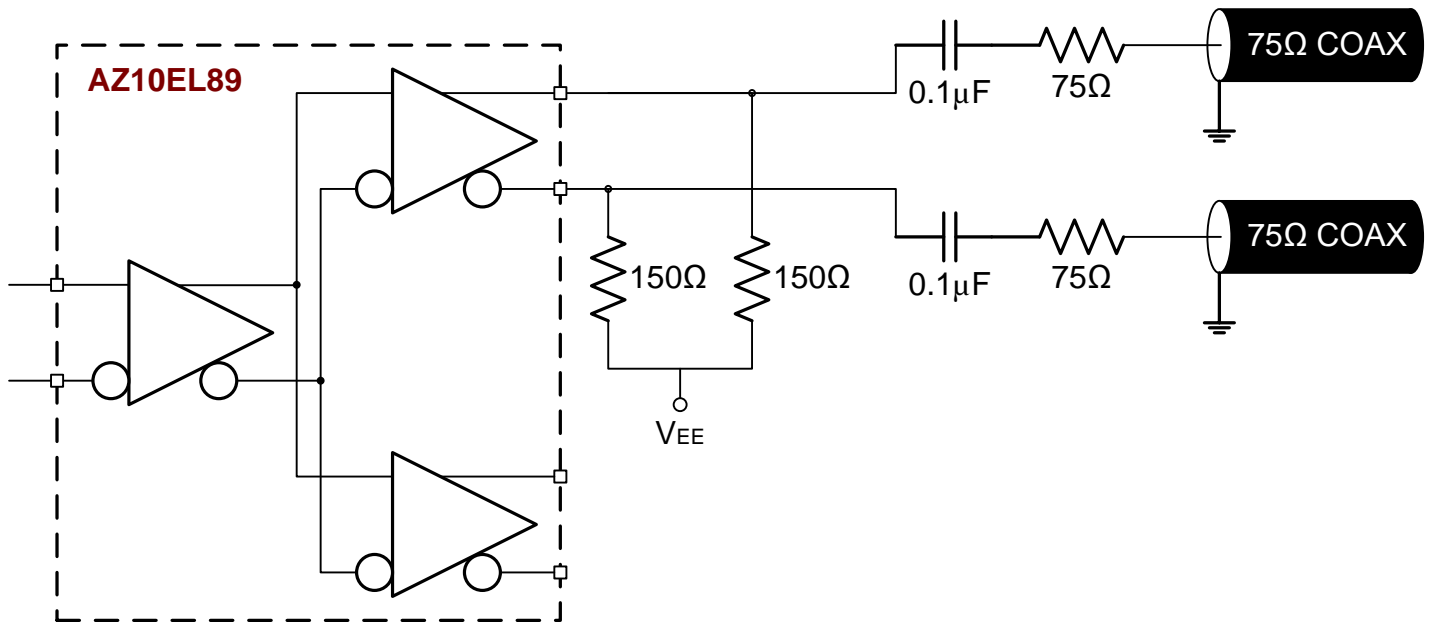


Figure 2 – Termination Configuration

PERFORMANCE DATA

Table 2 – Absolute Maximum Ratings

Absolute Maximum Ratings are those values beyond which device life may be impaired.

Symbol	Characteristic	Condition	Rating	Unit
V_{CC}	PECL Power Supply	($V_{EE} = 0V$)	0 to +8.0	V
V_I	PECL Input Voltage	($V_{EE} = 0V$)	0 to +6.0	V
V_{EE}	ECL Power Supply	($V_{CC} = 0V$)	-8.0 to 0	V
V_I	ECL Input Voltage	($V_{CC} = 0V$)	-6.0 to 0	V
I_{OUT}	Output Current	Continuous	50	mA
		Surge	100	
T_A	Operating Temperature Range		-40 to +85	°C
T_{STG}	Storage Temperature Range		-65 to +150	°C
ESD_{HBM}	Human Body Model		2500	V
ESD_{MM}	Machine Model		200	V
ESD_{CDM}	Charged Device Model		2500	V

Table 3 – 10K ECL DC Characteristics

10K ECL DC Characteristics ($V_{EE} = -4.2V$ to $-5.7V$, $V_{CC} = GND$)

Symbol	Characteristic	-40 °C			0 °C			25 °C			85 °C			Unit
		Min	Typ	Max	Min	Typ	Max	Min	Typ	Max	Min	Typ	Max	
V_{OH}	Output HIGH Voltage ¹	-1230		-980	-1180		-940	-1130		-900	-1060		-810	mV
V_{OL}	Output LOW Voltage ¹	-2900		-2580	-2950		-2570	-3000		-2560	-3050		-2510	mV
V_{IH}	Input HIGH Voltage	-1230		-890	-1170		-840	-1130		-810	-1060		-720	mV
V_{IL}	Input LOW Voltage	-1950		-1500	-1950		-1480	-1950		-1480	-1950		-1445	mV
I_{IL}	Input LOW Current	0.5			0.5			0.5			0.5			µA
I_{IH}	Input HIGH Current			150			150			150			150	µA
I_{EE}	Power Supply Current		23	28		23	28		23	28		23	28	mA

¹ Each output is terminated through a 50Ω resistor to $V_{CC} - 3V$.

Table 4 – 10K PECL DC Characteristics

10K PECL DC Characteristics ($V_{EE} = \text{GND}$, $V_{CC} = +5.0\text{V}$)

Symbol	Characteristic	-40 °C			0 °C			25 °C			85 °C			Unit
		Min	Typ	Max	Min	Typ	Max	Min	Typ	Max	Min	Typ	Max	
V_{OH}	Output HIGH Voltage ^{1,2}	3770		4020	3820		4060	3870		4100	3940		4190	mV
V_{OL}	Output LOW Voltage ^{1,2}	2100		2420	2050		2430	2000		2440	1950		2490	mV
V_{IH}	Input HIGH Voltage ¹	3770		4110	3830		4160	3870		4190	3940		4280	mV
V_{IL}	Input LOW Voltage ¹	3050		3500	3050		3520	3050		3520	3050		3555	mV
I_{IL}	Input LOW Current	0.5			0.5			0.5			0.5			μA
I_{IH}	Input HIGH Current			150			150			150			150	μA
I_{EE}	Power Supply Current		23	28		23	28		23	28		23	28	mA

¹ For supply voltages other than 5.0V, use the ECL table values and ADD supply voltage value.

² Each output is terminated through a 50Ω resistor to $V_{CC} - 3\text{V}$.

Table 5 – AC Characteristics

AC Characteristics ($V_{EE} = -4.2\text{V}$ to -5.7V , $V_{CC} = \text{GND}$ or $V_{EE} = \text{GND}$, $V_{CC} = +4.2\text{V}$ to $+5.7\text{V}$)

Symbol	Characteristic	-40 °C			0 °C			25 °C			85 °C			Unit
		Min	Typ	Max	Min	Typ	Max	Min	Typ	Max	Min	Typ	Max	
t_{max}	Maximum Toggle Rate								1.5					Gb/s
t_{PLH}/t_{PHL}	Propagation Delay to Output	200	340	480	250	340	430	260	350	440	310	400	490	ps
t_{skew}	Within-Device Skew ¹ Duty Cycle Skew ²		5	20		5	20		5	20		5	20	ps
V_{PP}	Minimum Input Swing ³	150			150			150			150			mV
V_{CMR}	Common Mode Range ⁴	$V_{EE} + 2.5$		$V_{CC} - 0.4$	$V_{EE} + 2.5$		$V_{CC} - 0.4$	$V_{EE} + 2.5$		$V_{CC} - 0.4$	$V_{EE} + 2.5$		$V_{CC} - 0.4$	V
t_r/t_f	Output Rise/Fall Times Q (20%-80%)	205		455	205		455	205		455	205		455	ps

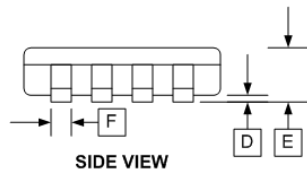
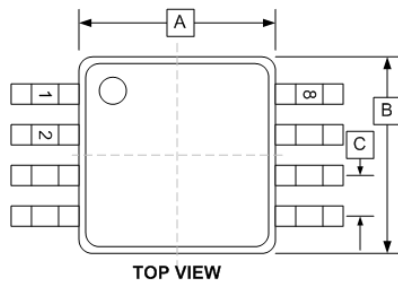
¹ Within-device skew defined as identical transitions on similar paths through a device.

² Duty cycle skew is the difference between a t_{PLH} and t_{PHL} propagation delay through a device.

³ V_{PP} is the minimum peak-to-peak differential input swing for which AC parameters guaranteed. The device has a DC gain of ~ 40.

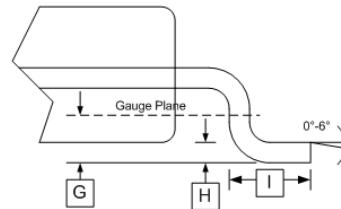
⁴ The V_{CMR} range is referenced to the most positive side of the differential input signal. Normal operation is obtained if the HIGH level falls within the specified range and the peak-to-peak voltage lies between V_{PP} (min) and 1V.

PACKAGE DIAGRAM
 SOIC8
 Green/RoHS compliant/Pb-Free
 MSL=1

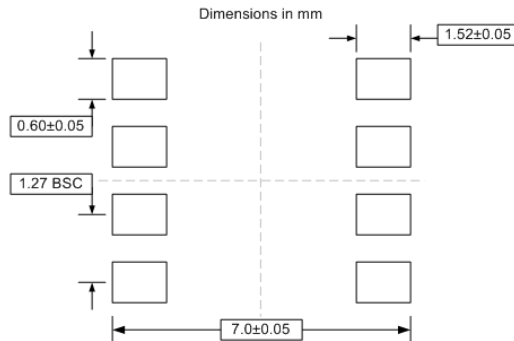


DIM	INCHES	
	MIN	MAX
A	0.189	0.196
B	0.150	0.157
C	0.050 BSC	
D	0.004	0.01
E	0.054	0.068
F	0.014	0.019
G	0.010	
H	0.0075	0.0098
I	0.016	0.034

SOIC8 (D)



PCB LAND PATTERN/FOOTPRINT



Arizona Microtek, Inc. reserves the right to change circuitry and specifications at any time without prior notice. Arizona Microtek, Inc. makes no warranty, representation or guarantee regarding the suitability of its products for any particular purpose, nor does Arizona Microtek, Inc. assume any liability arising out of the application or use of any product or circuit and specifically disclaims any and all liability, including without limitation special, consequential or incidental damages. Arizona Microtek, Inc. does not convey any license rights nor the rights of others. Arizona Microtek, Inc. products are not designed, intended or authorized for use as components in systems intended to support or sustain life, or for any other application in which the failure of the Arizona Microtek, Inc. product could create a situation where personal injury or death may occur. Should Buyer purchase or use Arizona Microtek, Inc. products for any such unintended or unauthorized application, Buyer shall indemnify and hold Arizona Microtek, Inc. and its officers, employees, subsidiaries, affiliates, and distributors harmless against all claims, costs, damages, and expenses, and reasonable attorney fees arising out of, directly or indirectly, any claim of personal injury or death associated with such unintended or unauthorized use, even if such claim alleges that Arizona Microtek, Inc. was negligent regarding the design or manufacture of the part.