



**Features**

- Small Size Design EIA 1812 4.5×3.2×2.7mm
- Current Handling Capability 1,000A @ 8/20 μ s
- Low Capacitance and Insertion Loss
- Fast Response and Long Service Life
- Reliable to Protect Electrostatic Surge
- Moisture sensitivity level: Level 1

**Application information**

- Ethernet

**Agency Approvals**

Icon	Description
<b>RoHS</b>	Compliance with 2011/65/EU
<b>HF</b>	Compliance with IEC61249-2-21:2003
	Mean lead free
	Compliance with UL497B, Certificated E232249

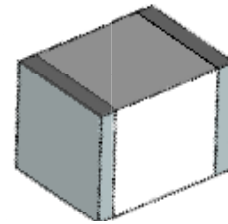
**Electrical Parameter**

DC Breakdown Voltage 1)2)	100V/s	420-780	V
Impulse Spark-over Voltage	At 1kV/μs	for 99 % of measured values	≤ 1200
	At 1kV/μs	Typical values of distribution	≤ 1100
Impulse Discharge Current 3)	8/20μs	1,000	A
Arc Voltage	At 1A	~15	V
Insulation Resistance	DC=100V	≥1	GΩ
Capacitance at 1 MHz	VDC=0.5V	≤1.0	pF
Weight		~0.20	g
Operating And Storage Temperature		-40-90	°C
Marking		Without	

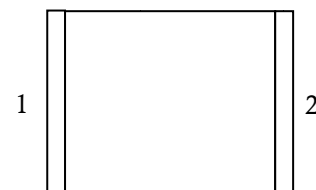
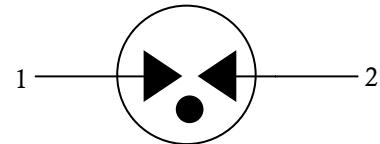
1) At delivery AQL 0.65 level II GB/T 2828.1-2003

2) In ionized mode

3) Terms and waveforms in accordance with ITU-T Rec. K. 12; IEC 61643-21

**Exterior**


SMD

**Package (Top View)**

**Schematic Symbol**


**Part Numbering System**

BA 601 N

(1) (2) (3)

(1) Bencent Gas Discharge Tube

 (2) Series: DC Breakdown Voltage, e.g.:  $151=15 \times 10^1=150V$ 

 (3) Tolerance of DC Breakdown Voltage,  $M=\pm 20\%$ ,

 $N=\pm 30\%$ , the Specific tolerance is decided by the table of

"Electrical Parameter"

**Product Characteristics**

Lead Material	Copper or iron nickel alloy
Body Material	Ceramics
Terminal Finish	100% Matte-Tin Plated

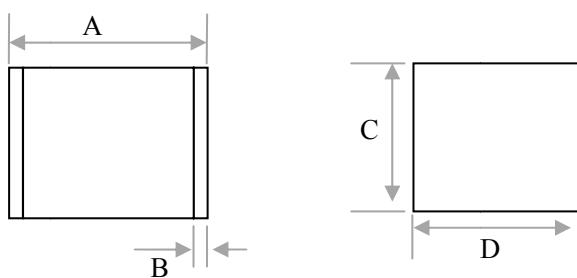
**Environmental Reliability Characteristics**

Testing items	Technical standards
High Temperature Storage Test	Temperature: 85°C Time: 2H
Low Temperature Storage Test	Temperature: -40°C Time: 2H
Vibration	Frequency: 10-500Hz Amplitude: 0.15mm Time: 45mins
Resistance of soldering heat	Temperature: 260±5°C Time of dip soldering: 10s, 1time

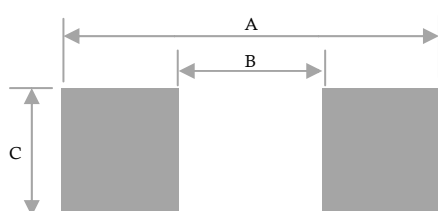
Note: Up-screen program can be specified by customer's request via contacting Bencent service

**Solderability Test**

Solderability	Solder Pot Temperature:	245°C ± 5°C
	Solder Dwell Time:	4-6 secs

**Product Dimensions**


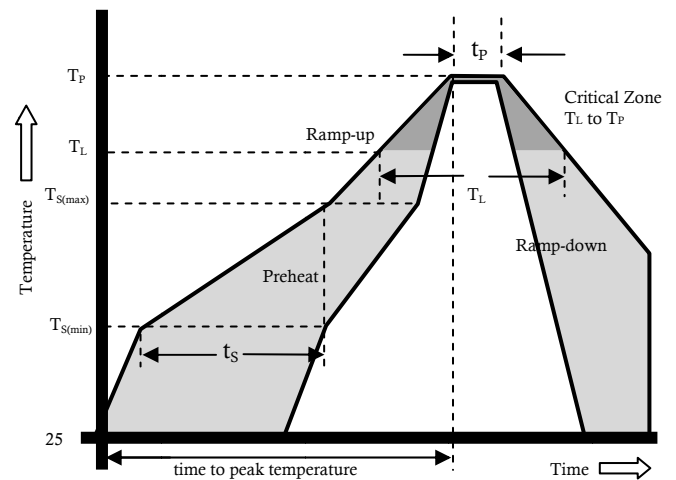
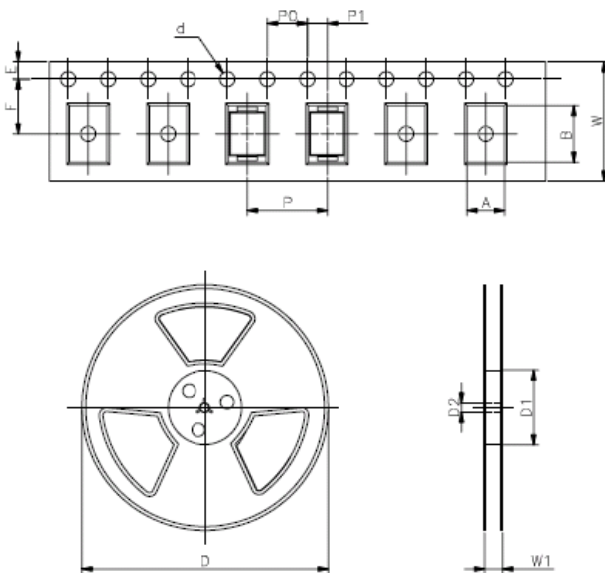
REF	mm	inch
A	4.5±0.3	0.177±0.012
B	0.5±0.2	0.020±0.008
C	2.7±0.2	0.106±0.008
D	3.2±0.2	0.126±0.008

**Recommended Soldering Pad**


REF	mm	inch
A	5.5	0.217
B	3.5	0.138
C	3.5	0.138

**Reflow Profile**

Reflow Condition		Pb-Free assembly
Pre Heat	Temperature Min	150°C
	Temperature Max	200°C
	Time (min to max)	60 – 180 secs
Average ramp up rate (Liquidus Temp (T <sub>L</sub> ) to peak)		3°C/sec max
T <sub>S(max)</sub> to T <sub>L</sub> - Ramp-up Rate		3°C/sec max
Reflow	- Temperature (T <sub>L</sub> ) (Liquidus)	217°C
	- Temperature (T <sub>L</sub> )	60 – 150 secs
Peak Temperature (T <sub>p</sub> )		260±0/-5 °C
Time within 5°C of actual Peak Temperature (t <sub>p</sub> )		8 – 20 secs.
Ramp-down Rate		6°C/sec max
Time 25°C to peak Temperature (T <sub>p</sub> )		8 mins Max
Do not exceed		260°C


**Package Reel Information**


REF	mm	inch
A	3.7±0.2	0.146±0.008
B	4.7±0.2	0.185±0.008
d	Φ1.5±0.1	Φ0.059±0.004
E	1.75±0.1	0.069±0.004
F	5.5±0.1	0.217±0.002
P	8.0±0.1	0.315±0.004
P0	4.0±0.1	0.157±0.004
P1	2.0±0.1	0.079±0.004
W	12.0±0.2	0.472±0.008
D	Φ330.0	Φ13.0
D1	Φ50Min	Φ1.97Min
D2	Φ13±0.5	0.512±0.02
W1	16.8±2.0	0.661±0.079

Outline	Reel (pcs)	Per Carton (pcs)	Reel Diameters (mm)	Carton Size(mm)		
				L	W	H
TAPING	2,000	32,000	330	360	360	380