

# BNC Style Connector

## BNC Series

DDK Ltd.

### FEATURE

- BNC style connector is one of the most popular 50 Ω coaxial connector.
- Bayonet coupling mechanism for reliable connection. It is suitable for the frequent connection
- When you use 75 Ω cable, the frequency shall be less than 200MHz. When the frequency is more than 200MHz, please chose BNC75 series.
- BNC75 series (75 Ω type BNC style connector) can be mated.



### CONFORMING STANDARD

JIS-C-5412, MIL-PRF-39012, DSP-C-6202

### SPECIFICATIONS

Characteristic Impedance	50 Ω
Rated Voltage	500VAC(r.m.s.)
Dielectric Withstanding Voltage	1500V AC(r.m.s.) for 1 minute
Insulation Resistance	1000M Ω Mim. at 500V DC
Contact Resistance	3m Ω Max.
V.S.W.R.	1.3 max. at DC to 2GHz
Operating Temperature	-55 ~ +85°C

\* The specifications are typical but may not apply to all connectors.  
And if the cable is not 50 Ω , the specification will be changed.  
Please check the specifications on each item with its drawing from us when you use.

### MATERIAL/FINISH

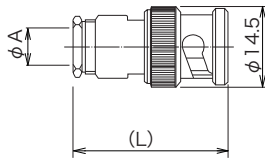


Item	Material / Finish
Shell (Body)	Copper Alloy / Ni or Ag Plating
Contact (Male)	Copper Alloy / Ag or Au Plating
Contact (Female)	Copper Alloy / Ag or Au Plating
Insulator	PTFE
Gasket	Silicon Rubber

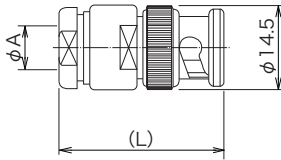
© Please acknowledge that the specification etc. of this catalog might change by the improvement etc. without notice.  
Moreover, the characteristic and the specification of the published product are the reference values.  
Please confirm the content with the latest delivery specifications when you use the product.

▶ Straight Cable Plug

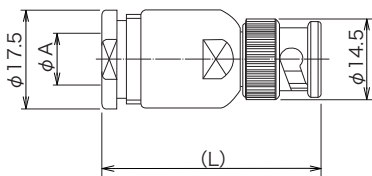
Clamp Type



Part Number	Applicable Cable	ϕ A	(L)	Finish		Assembly Instruction
				Outer Conductor	Center Conductor	
BNC-P-3-CF	3D-2V	6.4	25.0	Ag	Ag	1
	3C-2V					
BNC-P-3-Ni-CF	3D-2V	6.4	25.0	Ni	Ag	1
	3C-2V					
BNC-P-3-NiCAu-CF	3D-2V	6.4	25.0	Ni	Au	1
	3C-2V					
BNC-P-58U-CF	RG-55/U	5.4	27.0	Ag	Ag	1
	RG-58/U					
BNC-P-58U-Ni-CF	RG-55/U	5.4	27.0	Ni	Ag	1
	RG-58/U					
BNC-P-62U - CF	RG-62/U	6.6	26.2	Ag	Ag	1
BNC-P-62U-Ni-CF	RG-62/U	6.6	26.2	Ni	Ag	1
UG-260/U-CF	RG-59/U	6.55	24.6	Ag	Ag	1
	RG-62/U					
UG-260/U-Ni-CF	RG-59/U	6.55	24.6	Ni	Ag	1
	RG-62/U					



Part Number	Applicable Cable	ϕ A	(L)	Finish		Assembly Instruction
				Outer Conductor	Center Conductor	
BNC-P-3W-CF	3D-2W	7.1	29.1	Ag	Ag	1
	3C-2W					
BNC-P-3W-Ni-1-CF	3D-2W	7.1	29.1	Ni	Ag	1
	3C-2W					

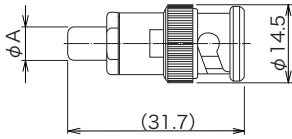


Part Number	Applicable Cable	ϕ A	(L)	Finish		Assembly Instruction
				Outer Conductor	Center Conductor	
BNC-P-5-CF	5D-2V	8.6	37.0	Ag	Ag	1
	5C-2V					
BNC-P-5-Ni-CF	5D-2V	8.6	37.0	Ni	Ag	1
	5C-2V					
BNC-P-5W-CF	5D-2W	9.2	37.0	Ag	Ag	1
	5C-2W					
BNC-P-5W-Ni-CF	5D-2W	9.2	37.0	Ni	Ag	1
	5C-2W					

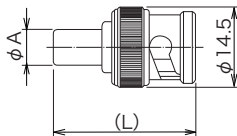
© Please acknowledge that the specification etc. of this catalog might change by the improvement etc. without notice.  
 Moreover, the characteristic and the specification of the published product are the reference values.  
 Please confirm the content with the latest delivery specifications when you use the product.

▶ Straight Cable Plug

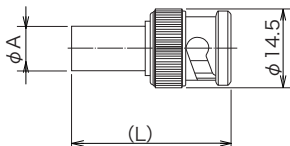
**Crimp Type**



Part Number	Applicable Cable	φ A	Finish		Assembly Instruction	Crimp Tool
			Outer Conductor	Center Conductor		
BNC-P-1.5V-CR-CF	1.5D-2V	5.5	Ag	Ag	3	CRH-1100
	1.5C-2V					
BNC-P-1.5V-CR-Ni-CF	1.5D-2V	5.5	Ni	Ag	3	CRH-1100
	1.5C-2V					
BNC-P-1.5V-CR-NiAu-CF	1.5D-2V	5.5	Ni	Au	3	CRH-1100
	1.5C-2V					
BNC-P-2.5V-CR-CF	2.5D-2V	5.5	Ag	Ag	3	CRH-1100
	2.5C-2V					
BNC-P-2.5V-CR-Ni-CF	2.5D-2V	5.5	Ni	Ag	3	CRH-1100
	2.5C-2V					
BNC-P-2.5V-CR-NiAu-CF	2.5D-2V	5.5	Ni	Au	3	CRH-1100
	2.5C-2V					
BNC-P-179U-CR-CF	RG-179/U	5.5	Ag	Ag	3	CRH-1100
BNC-P-179U-CR-Ni-CF	RG-179/U	5.5	Ni	Ag	3	CRH-1100



Part Number	Applicable Cable	φ A	(L)	Finish		Assembly Instruction	Crimp Tool	Note
				Outer Conductor	Center Conductor			
BNC-P-1.5CQEW-CR10-CF	1.5C-QEW	5.5	24.3	Ni	Au	—	CRH-1100	Delta-mate
BNC-P-1.5D-CR10-CF	1.5D-XV	4.0	23.3	Ni	Au	4	CRH-1120A	Delta-mate
	1.5D-QEW							
BNC-P-3C-CR10-BOOT-CF	3C-2V	7.1	24.3	Ni	Au	4	CRH-1116	Delta-mate
BNC-P-3D-CR10-BOOT-CF	3D-2V	7.1	24.3	Ni	Au	4	CRH-1116	Delta-mate
BNC-P-58U-CR10-CF	RG-58/U	6.3	24.3	Ni	Au	4	CRH-1115	Delta-mate
	RG-58A/U							
BNC-P-3D-CR10-CF	3D-2V	7.1	24.3	Ni	Au	4	CRH-1116	Delta-mate

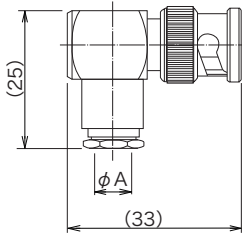


Part Number	Applicable Cable	φ A	(L)	Finish		Assembly Instruction	Crimp Tool
				Outer Conductor	Center Conductor		
BNC-P-3C-CR1-CF	3C-2V	7.0	28.0	Ag	Ag	2	CRH-1102
BNC-P-3C-CR1-Ni-CF	3C-2V	7.0	28.0	Ni	Ag	2	CRH-1102

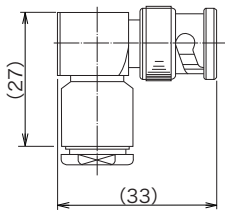
© Please acknowledge that the specification etc. of this catalog might change by the improvement etc. without notice.  
 Moreover, the characteristic and the specification of the published product are the reference values.  
 Please confirm the content with the latest delivery specifications when you use the product.

▶ Right Angle Cable Plug

Clamp Type



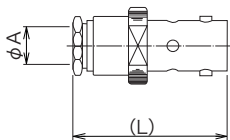
Part Number	Applicable Cable	φ A	Finish		Assembly Instruction
			Outer Conductor	Center Conductor	
BNC-LP-3-CF	3D-2V	6.4	Ag	Ag	5
	3C-2V				
BNC-LP-3-CAu-CF	3D-2V	6.4	Ag	Au	5
	3C-2V				
BNC-LP-3-NiAu-CF	3D-2V	6.4	Ni	Au	5
	3C-2V				
BNC-LP-3-Ni-CF	3D-2V	6.4	Ni	Ag	5
	3C-2V				
BNC-LP-58U-CF	RG-55/U	5.38	Ag	Ag	6
	RG-58/U				
BNC-LP-58U-Ni-CF	RG-55/U	5.38	Ni	Ag	6
	RG-58/U				
BNC-LP-55U-CF	RG-55/U	5.4	Ag	Ag	6
	RG-58/U				



Part Number	Applicable Cable	Finish		Assembly Instruction
		Outer Conductor	Center Conductor	
BNC-LP-5-CF	5D-2V	Ag	Ag	7
	5C-2V			
BNC-LP-5-Ni-CF	5D-2V	Ni	Au	7
	5C-2V			

▶ Straight Cable Jack

Clamp Type

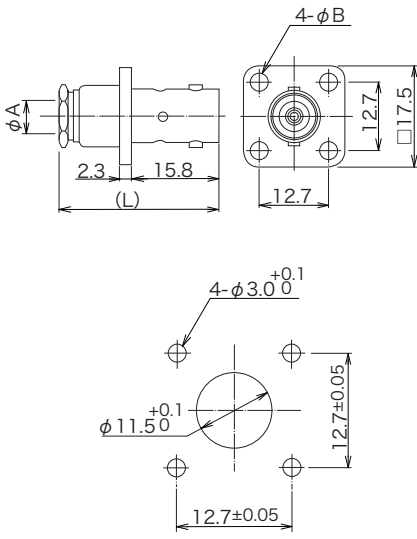


Part Number	Applicable Cable	φ A	(L)	Finish		Assembly Instruction
				Outer Conductor	Center Conductor	
BNC-J-3-CF	3D-2V	6.4	28.5	Ag	Ag	1
	3C-2V					
BNC-J-3-Ni-CF	3D-2V	6.4	28.5	Ni	Ag	1
	3C-2V					
BNC-J-58U-CF	RG-55/U	5.4	28.6	Ag	Ag	1
	RG-58/U					

© Please acknowledge that the specification etc. of this catalog might change by the improvement etc. without notice.  
 Moreover, the characteristic and the specification of the published product are the reference values.  
 Please confirm the content with the latest delivery specifications when you use the product.

▶ Straight Panel Cable Jack

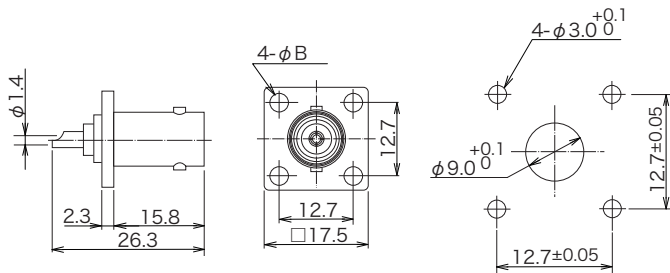
Clamp Type



Panel Mounting Dimensions

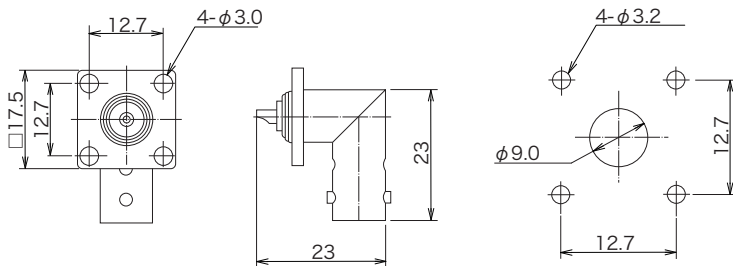
Part Number	Applicable Cable	φ A	φ B	(L)	Finish		Assembly Instruction
					Outer Conductor	Center Conductor	
BNC-PJ-3-CF	3D-2V	6.4	3.0	28.5	Ag	Ag	1
	3C-2V						
BNC-PJ-3-Ni-CF	3D-2V	6.4	3.0	28.5	Ni	Ag	1
	3C-2V						
BNC-PJ-58U-CF	RG-55/U	5.4	3.0	28.5	Ag	Ag	1
	RG-58/U						
BNC-PJ-58U-Ni-CF	RG-55/U	5.4	3.0	28.5	Ni	Ag	1
	RG-58/U						
BNC-PJ-58U-NiCAu-CF	RG-55/U	5.4	3.0	28.5	Ni	Au	1
	RG-58/U						

▶ Receptacle Jack



Panel Mounting Dimensions

Part Number	φ B	Finish	
		Outer Conductor	Center Conductor
BNC-R-CF	3.1	Ag	Ag
BNC-R-Ni-CF	3.1	Ni	Ag
UG-290/U-CF	M2.6	Ag	Ag
UG-290/U-Ni-1-CF	M2.6	Ni	Ag

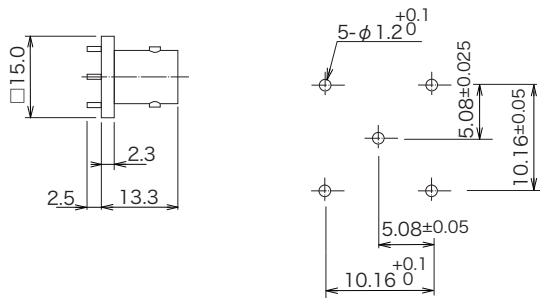


Panel Mounting Dimensions

Part Number	Finish	
	Outer Conductor	Center Conductor
BNC-LR-CF	Ag	Ag
BNC-LR-Ni-CF	Ni	Ag

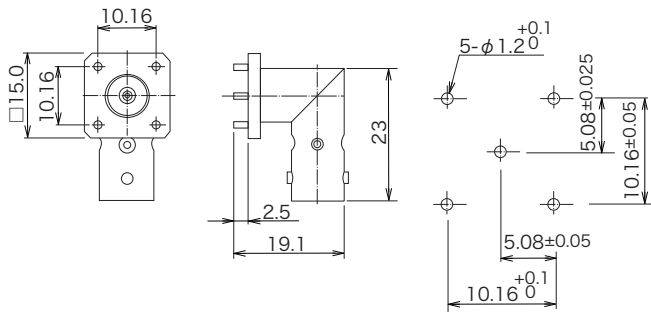
© Please acknowledge that the specification etc. of this catalog might change by the improvement etc. without notice.  
 Moreover, the characteristic and the specification of the published product are the reference values.  
 Please confirm the content with the latest delivery specifications when you use the product.

▶ Receptacle Jack



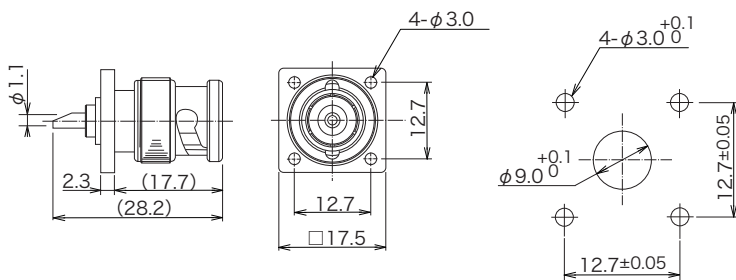
PCB Mounting Dimensions

Part Number	Finish		Note
	Outer Conductor	Center Conductor	
BNC-R-PC-4-Ag-CF	Ni	Ag	Board lock is Ag plating
BNC-R-PC-4-D1-CF	Ni	Au	Board lock is Ag plating.



PCB Mounting Dimensions

Part Number	Finish		Note
	Outer Conductor	Center Conductor	
BNC-LR-PC-4-Ag-CF	Ni	Ag	Board lock is Ag plating
BNC-LR-PC-4-NiCAu-CF	Ni	Au	Board lock is Ag plating

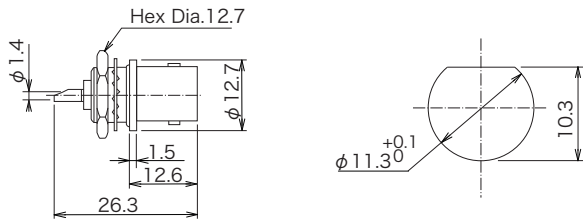


Panel Mounting Dimensions

Part Number	Finish	
	Outer Conductor	Center Conductor
BNC-PR-CF	Ag	Ag
BNC-PR-Ni-CF	Ni	Ag

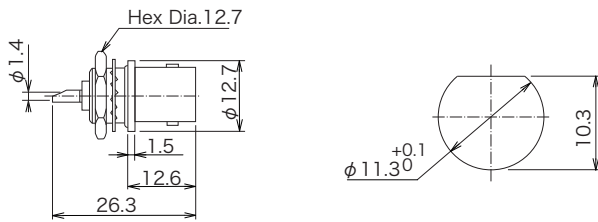
© Please acknowledge that the specification etc. of this catalog might change by the improvement etc. without notice.  
 Moreover, the characteristic and the specification of the published product are the reference values.  
 Please confirm the content with the latest delivery specifications when you use the product.

▶ Straight Bulkhead Cable Jack



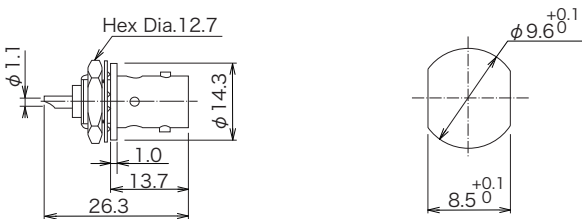
Panel Thickness : 1.2 ~ 3.5 Panel Mounting Dimensions

Part Number	Finish	
	Outer Conductor	Center Conductor
BNC-RB2-CF	Ag	Ag
BNC-RB2-Ni-CF	Ni	Ag
BNC-RB2-NiCAu-CF	Ni	Au



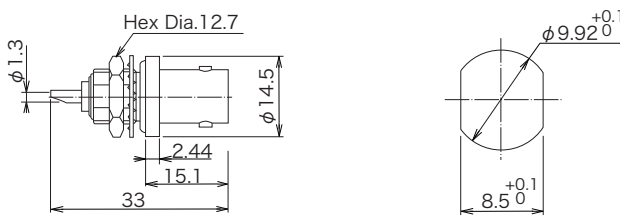
Panel Thickness : 1.2 ~ 3.5 Panel Mounting Dimensions

Part Number	Finish	
	Outer Conductor	Center Conductor
UG-625/U-CF	Ag	Ag
UG-625/U-Ni-CF	Ni	Ag



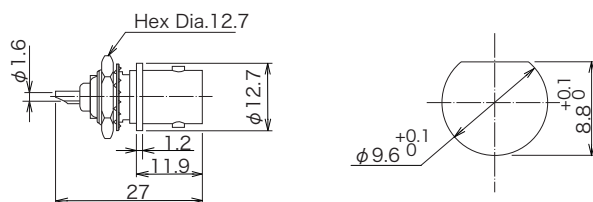
Panel Thickness : 0.7 ~ 2.4 Panel Mounting Dimensions

Part Number	Finish	
	Outer Conductor	Center Conductor
UG-604/U-CF	Ag	Ag
UG-604/U-Ni-1-CF	Ni	Ag



Panel Thickness : 2.2 ~ 6.0 Panel Mounting Dimensions

Part Number	Finish		Note
	Outer Conductor	Center Conductor	
UG-657/U-CF	Ag	Ag	Independent Waterproof with Frange O-ring
UG-657/U-Ni-CF	Ni	Ag	Independent Waterproof with Frange O-ring

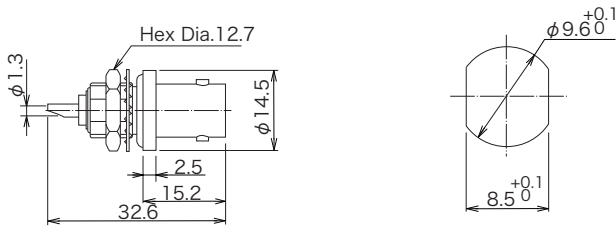


Panel Thickness : 2.2 ~ 3.1 Panel Mounting Dimensions

Part Number	Finish	
	Outer Conductor	Center Conductor
UG-1094/U-CF	Ag	Ag
UG-1094/U-D1-CF	Ni	Au

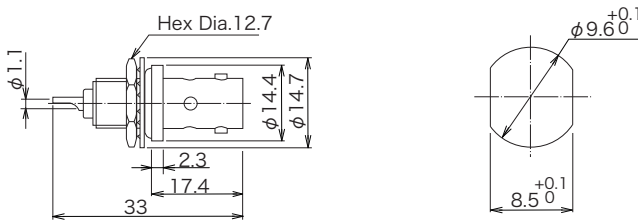
© Please acknowledge that the specification etc. of this catalog might change by the improvement etc. without notice.  
 Moreover, the characteristic and the specification of the published product are the reference values.  
 Please confirm the content with the latest delivery specifications when you use the product.

▶ Straight Bulkhead Cable Jack



Panel Thickness: 2.6 ~ 6.4 Panel Mounting Dimensions

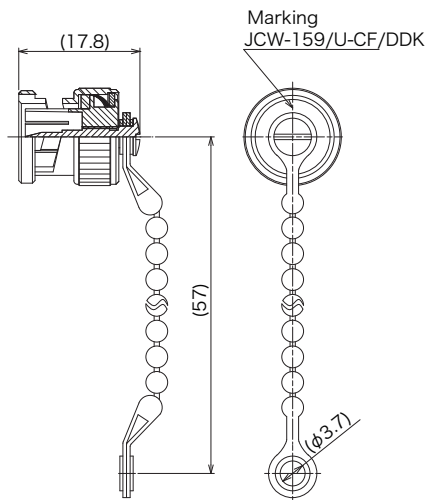
Part Number	Finish		Note
	Outer Conductor	Center Conductor	
BNC-RBP1-CF	Ag	Ag	Independent Waterproof with Frange O-ring
BNC-RBP1-Ni-CF	Ni	Ag	Independent Waterproof with Frange O-ring



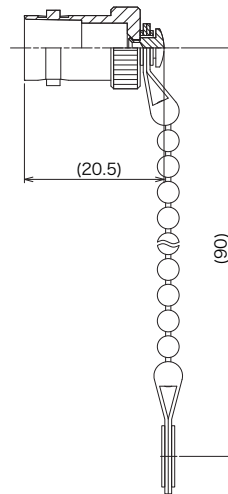
Panel Thickness: 2.2 ~ 7.0 Panel Mounting Dimensions

Part Number	Finish		Note
	Outer Conductor	Center Conductor	
BNC-RB-CF	Ag	Ag	with Frange O-ring
BNC-RB-Ni-CF	Ni	Ag	with Frange O-ring

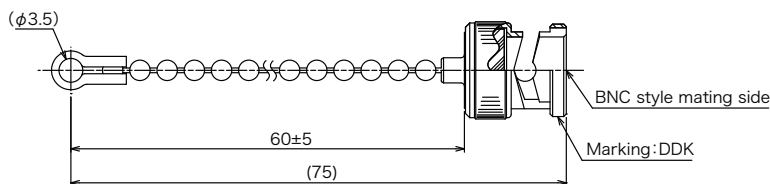
▶ Dust Cap



Part Number	Finish	
BNC-CS-CF	Ag	Short Cap
BNC-CS-Ni-CF	Ni	Short Cap



Part Number	Finish
BNC-JC-CF	Ag
BNC-JC-Ni-CF	Ni



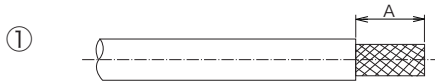
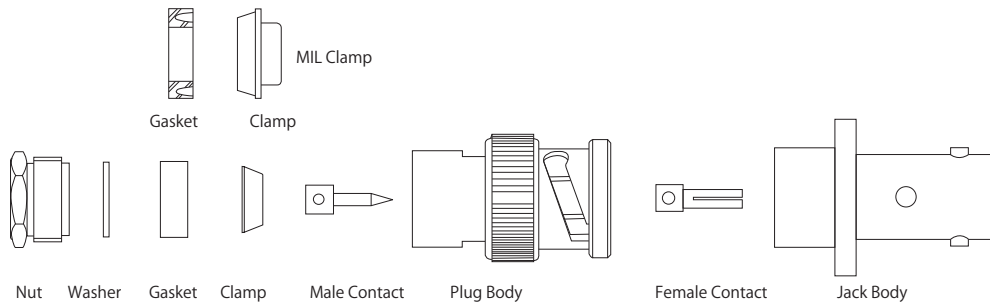
Part Number	Finish
BNC-RC-3	Ni
BNC-RC-3-D1	Ag

© Please acknowledge that the specification etc. of this catalog might change by the improvement etc. without notice.  
 Moreover, the characteristic and the specification of the published product are the reference values.  
 Please confirm the content with the latest delivery specifications when you use the product.



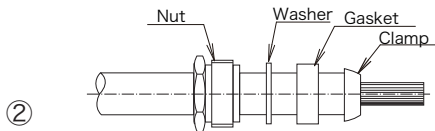
▶ Assembly Instruction (1)

Parts Configuration

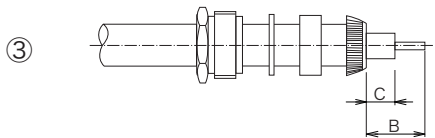


- ① Cut the cable as fig.1.  
Please be careful to not damage the outer conductor.

Applicable Cable	A
5D-2V, RG-59/U, RG-62/U	10mm
3D-2V, 5D-2W RG-55/U, RG-58/U	15mm
3D-2W	12mm

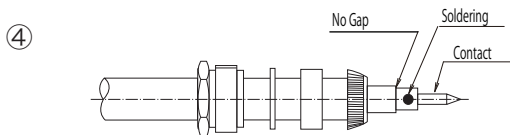


- ② Insert the nut, washer, gasket and clamp.  
● The clamp is located on the outer conductor of the cable. Pick the outer conductor.

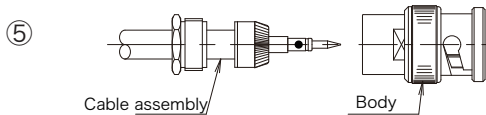


- ③ Cut the insulator and center conductor as fig.3.  
Fold up the outer conductor to the clamp equally and cut the outer conductor of the cable along the clamp as fig.3.  
● Please be careful to not damage the center conductor.

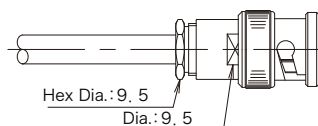
Applicable Cable	B	C
3D-2V, 3D-2W, RG-55/U, RG-58/U	6mm	3mm
5D-2V	7mm	5mm
RG-59/U, RG-62/U	5.5mm	3mm
5D-2W	7.2mm	5.4mm



- ④ Solder up the contact to the center conductor.  
● Please be careful to not be swelled up the solder.  
● Please be careful to not gap between contact and insulator.  
● Please be careful to not deform the insulator by soldering



- ⑤ Insert the body into the above cable assembly and screw up the nut.  
● Please screw up the nut by wrench tightly.

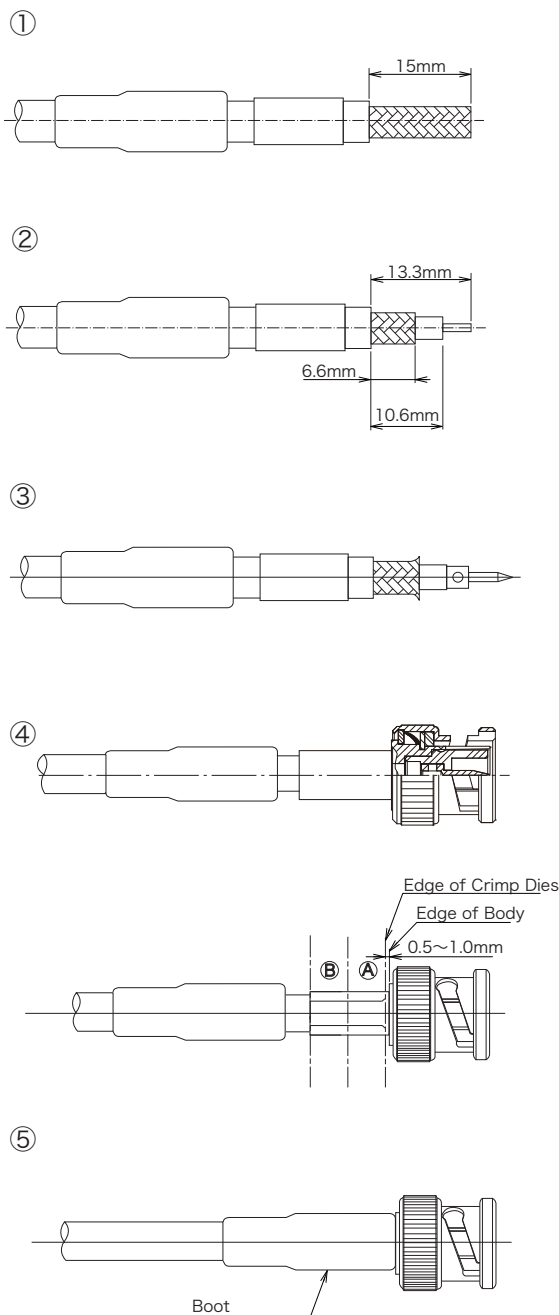
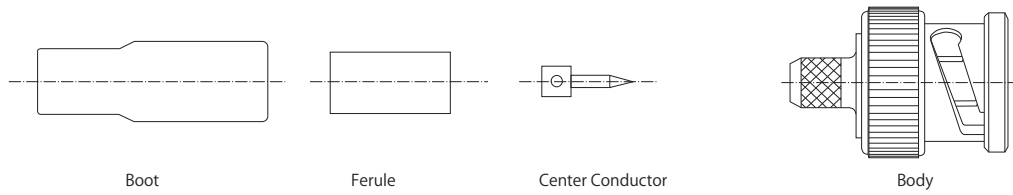


Applicable Cable	Recommended Tightening Torque
3D-2V, RG-55/U, RG-58/U	117.6 ~ 147N · cm(12 ~ 15kgf · cm)
RG-59/U, RG-62/U, 3D-2W	196N · cm(20kgf · cm)
5D-2V	441N · cm(45kgf · cm)
5D-2W	490 ~ 686N · cm(50 ~ 70kgf · cm)

© Please acknowledge that the specification etc. of this catalog might change by the improvement etc. without notice.  
Moreover, the characteristic and the specification of the published product are the reference values.  
Please confirm the content with the latest delivery specifications when you use the product.

▶ Assembly Instruction (2)

Parts Configuration



① Insert the boot, ferule into the cable and cut the cable as fig.1.

- Please be careful to not damage the outer conductor.

② Cut the insulator and outer conductor as fig.2. Pre-solder the center conductor and cut as fig.2.

- When cutting the insulator, please be careful to not damage the center conductor.

③ Solder up the contact to the center conductor.

Spread the end of the outer conductor to insert the body between insulator and outer conductor easily. Please do not pick the outer conductor.

- Please be careful to not be swelled up the solder. Shave the excess solder along the outside of the contact.
- Please be careful to not deform the insulator by soldering.

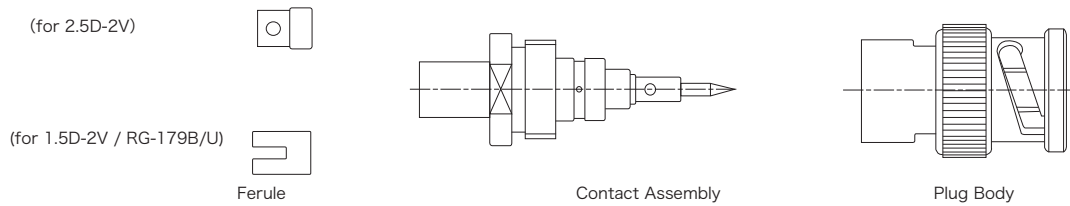
④ Insert the body into the cable between insulator and outer conductor until the top of the contact is on the same plane with the top of the body and move the ferule to the body. Crimp the ferule at position ① and position ②.

⑤ Cover the boot on the ferule.

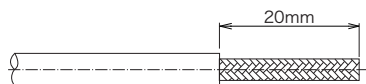
© Please acknowledge that the specification etc. of this catalog might change by the improvement etc. without notice.  
 Moreover, the characteristic and the specification of the published product are the reference values.  
 Please confirm the content with the latest delivery specifications when you use the product.

▶ Assembly Instruction (3)

Parts Configuration



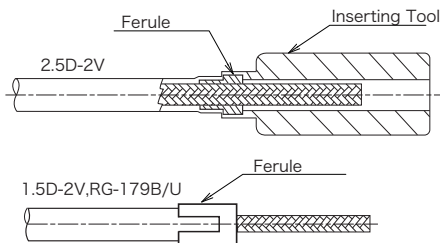
①



① Cut the cable as fig.1.

● Please be careful to not damage the outer conductor.

②

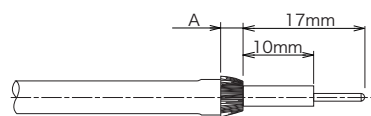


② Insert the ferule.

● In case of 2.5D-2V cable, insert the ferule into the cable and push the ferule between sheath and outer conductor until the head of ferule is reached to the sheath by inserting tool(E3001-160) and pick the outer conductor.

● In case of 1.5D-2V or RG-179B/U cable, insert the ferule until the ferule reached at the sheath and pick the outer conductor.

③

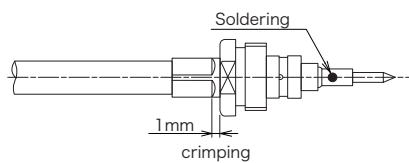


③ Folding down the outer conductor to the ferule and cut the outer conductor along the ferule as fig.3.

Cut the insulator and center conductor and pre-solder the center conductor.

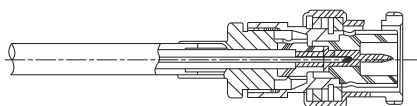
Applicable Cable	A
2.5D-2V	4mm
1.5-2V, RG-179B/U	5mm

④



④ Insert the contact assembly into the above cable assembly. Solder up the contact with center conductor and crimp the root of the contact assembly.

⑤



⑤ Insert the body into the above cable assembly and screw up the body by the wrench tightly.

Recommended Tightening Torque : 196 N·cm(20kgf·cm)

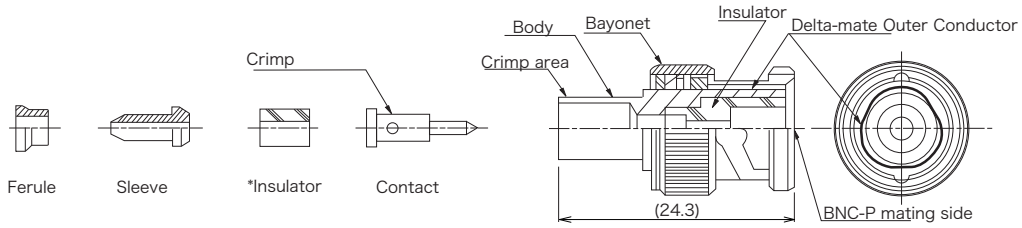
© Please acknowledge that the specification etc. of this catalog might change by the improvement etc. without notice.

Moreover, the characteristic and the specification of the published product are the reference values.

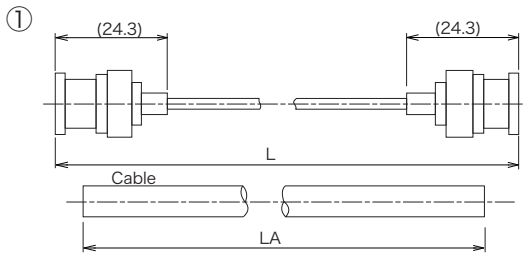
Please confirm the content with the latest delivery specifications when you use the product.

▶ Assembly Instruction (4)

Parts Configuration



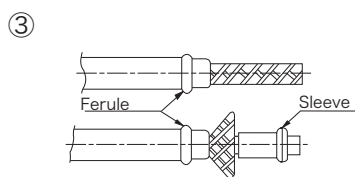
\*The insulator is attached with BNC-P-1.5D-CR10-CF.  
Please cover the sheath when crimping the contact.



① Cut the cable as fig.1.  
L Amm=Lmm-12mm

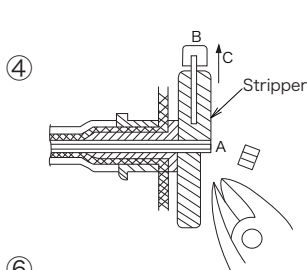


② Remove the sheath  
● Please be careful to not damage the outer conductor.

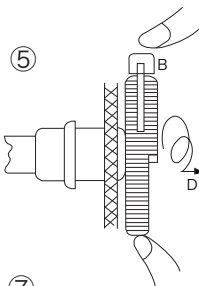


Assembly Tool	Attachment
CR-H-1115 CR-H-1116	89134
CR-H-1120A	89141

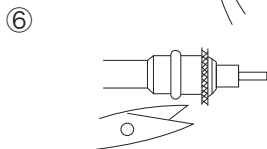
③ Insert the ferule and spread the tip of the outer conductor. Plunge the sleeve by stripper without digging the edge.



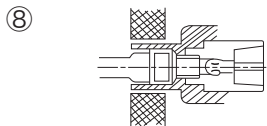
④ Cut the center conductor by stripper as fig.4.



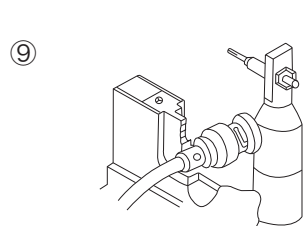
⑤ Cut the insulator by stripper as fig.5.  
Insert the stripper and dig the edge to the insulator. Rotate the stripper a few times and pull off the insulator.



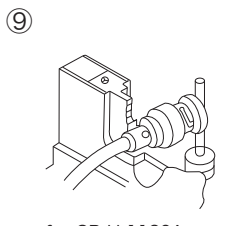
⑥ Trim the extra outer conductor along the sleeve.



⑦ Put the contact into the crimp tool attachment and insert it into the crimp dies as fig.7. Insert the center conductor into the contact hole and crimp the contact with touching the contact brim to the end of sheath.



⑧ Insert the above contact assembly into the body until the top of contact is same plane as rim of outer conductor.  
● After the contact brim is inserted into the body, do not rotate the cable and body.



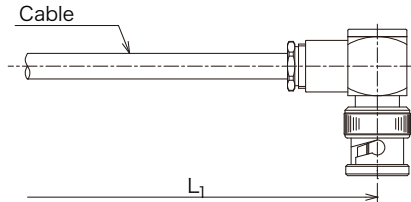
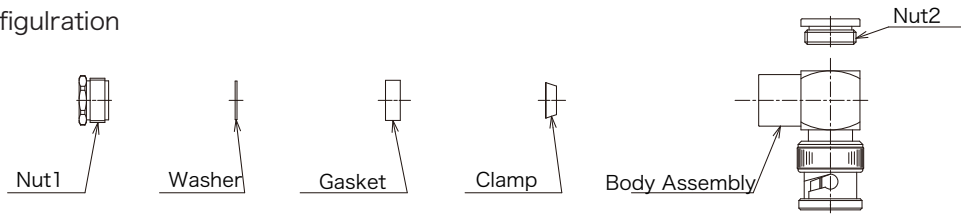
⑨ Put the above cable assembly in the crimp tool and crimp the root of the body.  
● Please match the hex of dies with the hole of the body.

for CR-H-1120A

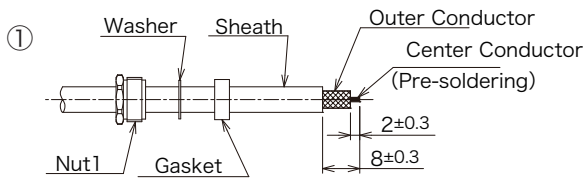
© Please acknowledge that the specification etc. of this catalog might change by the improvement etc. without notice.  
Moreover, the characteristic and the specification of the published product are the reference values.  
Please confirm the content with the latest delivery specifications when you use the product.

▶ Assembly Instruction (5)

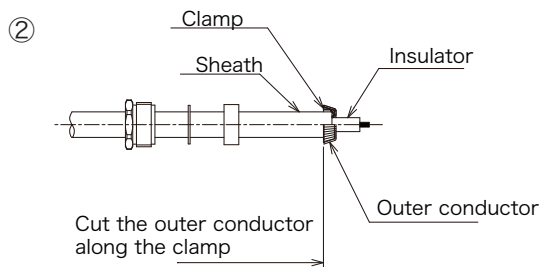
Parts Configuration



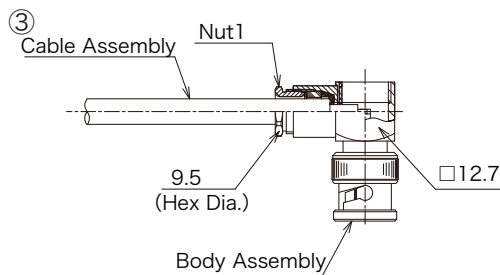
Cable length require for the single ended cable assembly  
 $L = L1 + 0.3$



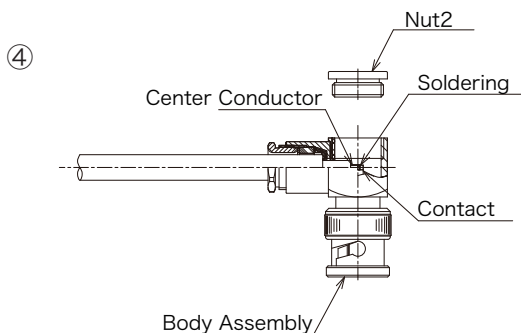
- 1-1. Cut the cable as fig.1.
- 1-2. Pre-solder the center conductor.
- Note) Please be careful to not damage the outer conductor.
- 1-3. Insert the nut 1, washer and gasket.



- 2-1. Insert the clamp into the outer conductor and put it on the sheath.
- 2-2. Pick the outer conductor and fold down to the clamp and cut the extra outer conductor along the clamp.



- 3-1. Insert the above cable assembly into the body.
- 3-2. Screw up the nut1 to the body.
- Recommended screw torque : 117.6 ~ 147N · cm  
 (12 ~ 15kgf · cm)

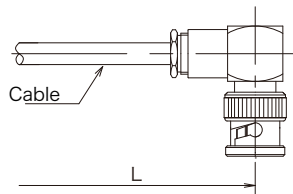
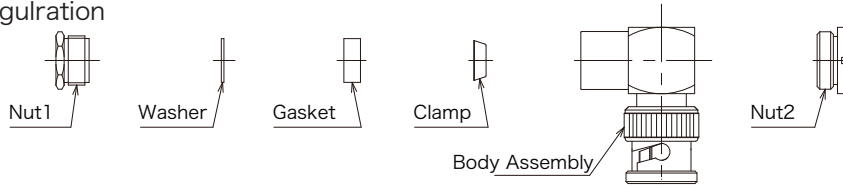


- 4-1. Solder up the contact with the center conductor
- 4-2. Screw up the nut2 to the body.
- Recommended screw torque : 49N · cm  
 (5kgf · cm)

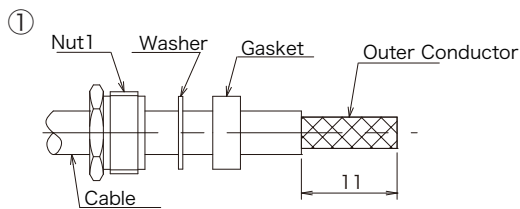
© Please acknowledge that the specification etc. of this catalog might change by the improvement etc. without notice.  
 Moreover, the characteristic and the specification of the published product are the reference values.  
 Please confirm the content with the latest delivery specifications when you use the product.

▶ Assembly Instruction(6)

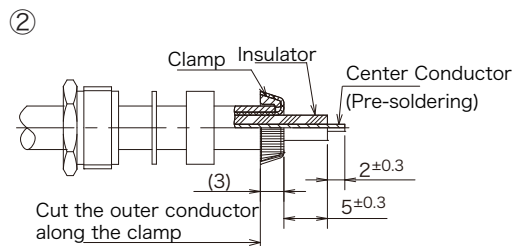
Parts Configuration



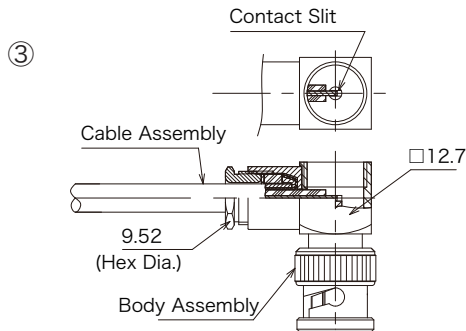
The cable length require for the single ended cable assembly.  $L_1 = L + 3.3$



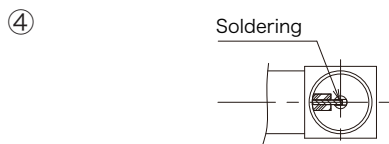
1-1. Insert the nut1, washer and gasket.  
 1-2. Cut the cable as fig.1.  
 Note) Please be careful to not damage the outer conductor.



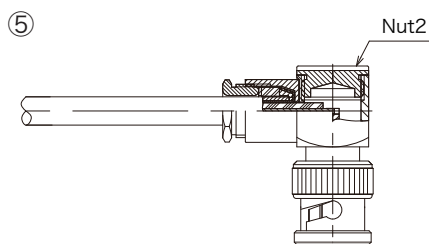
2-1. Insert the clamp into the outer conductor and move to the sheath.  
 2-2. Pick the outer conductor equally. Fold down to the clamp and cut the extra outer conductor along the clamp.  
 3-3. Cut the insulator as fig. 2.  
 2-4. Pre-solder the center conductor and cut the center conductor as fig.2.



3-1. Insert the above contact assembly into the body assembly.  
 Note) The center conductor is located in the center of contact slit.  
 3-2. Move the nut1, washer and gasket to the body.  
 3-2. Screw up the nut1 to the body.  
 Recommended screw torque : 117.6 ~ 147N · cm  
 (12 ~ 15kgf · cm)



4-1. Solder up the contact with center conductor.

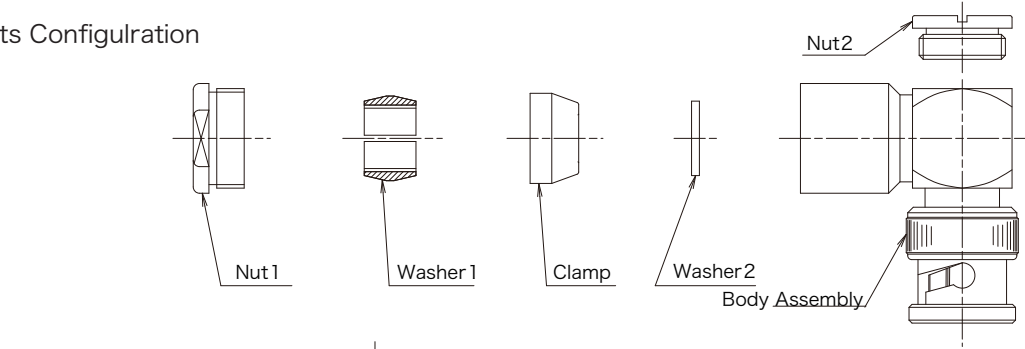


5-1. Screw up the nut2 to the body.  
 Recommended screw torque : 49N · cm min.  
 (5kgf · cm min.)

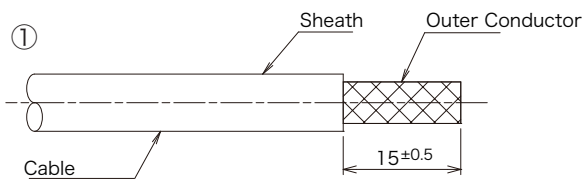
© Please acknowledge that the specification etc. of this catalog might change by the improvement etc. without notice.  
 Moreover, the characteristic and the specification of the published product are the reference values.  
 Please confirm the content with the latest delivery specifications when you use the product.

▶ Assembly Instruction (7)

Parts Configuration

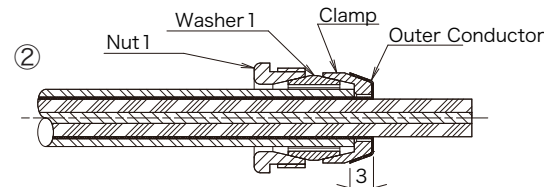


The cable length require for the single ended cable assembly :  $L_1$   
 $L_1 = L + 3$



1-1. Cut the cable as fig.1.

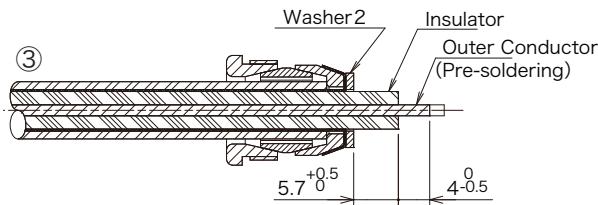
Note) Please be careful to not damage the outer conductor.



2-1. Insert the nut1, washer1 and insert the clamp on the outer conductor and move to the sheath.

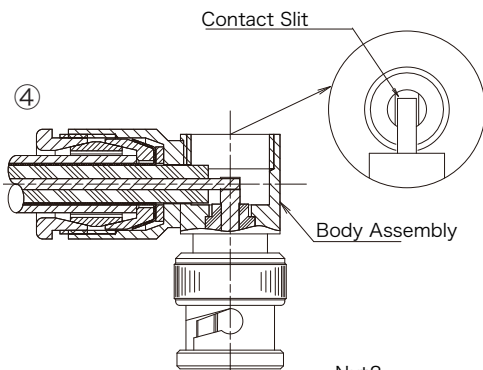
2-2. Fold down to the clamp and cut the extra outer conductor in 3 mm from the clamp.

2-3. Move the washer 1 and nut 1 to the clamp.



3-1. Insert washer 2 on the outer conductor and cut the insulator as fig.3.

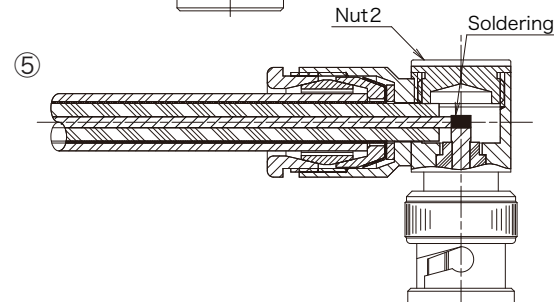
3-2. Pre-solder the center conductor and cut the center conductor as fig.3.



4-1. Insert the above cable assembly into the bodyassembly and screw up the nut 1.

Recommended screw torque :  $196\text{N} \cdot \text{cm}$  ( $20\text{kgf} \cdot \text{cm}$ )

Note) The center conductor is located in the center of contact slit.



5-1. Solder up the contact with center conductor.

5-2. Screw up the nut 2 to the body.

Recommended screw torque :  $49\text{N} \cdot \text{cm}$  ( $5\text{kgf} \cdot \text{cm}$ )

© Please acknowledge that the specification etc. of this catalog might change by the improvement etc. without notice.  
 Moreover, the characteristic and the specification of the published product are the reference values.  
 Please confirm the content with the latest delivery specifications when you use the product.