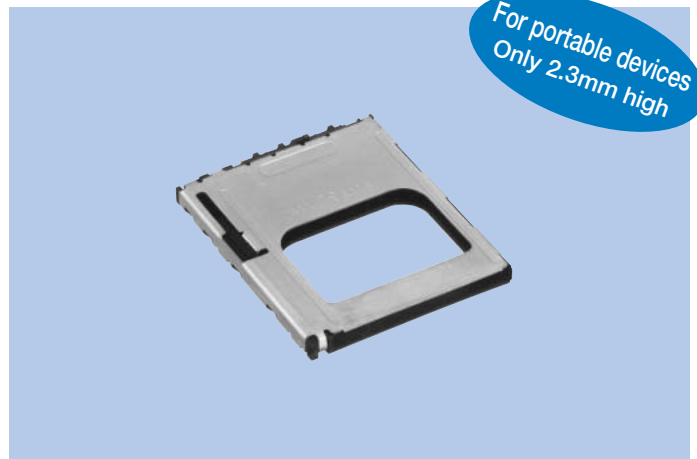


Memory Stick™ Duo Connectors CIM-G24 Series

OUTLINE

1. SMT-type connector for Memory Stick Duo.
2. Equipped with push-in, push-out eject mechanism.
3. Ideal for portable devices! Ultra-thin type, only 2.3mm high.
4. Space-saving, with width of 23.5mm and length of 27.8mm (not including leads).
5. Equipped with half lock to prevent card from falling out, and full lock mechanism when coupled.

*Memory Stick™ is a registered trademark of SONY Corporation.



HOW TO ORDER

G24-010-21 0-A G G E
 1 2 3 4 5 6 7 8

1. Series No. (G24)
2. No. of contacts (010 : 10pins)
3. Housing material (21 : LCP resin)
4. UL grade (0: UL94-V0)
5. Contact plating (A : Gold)
6. Contact plating thickness (G: 0.3μm)
7. Contact style (G: Angle)
8. Package (E: Taping)

SPECIFICATIONS

ELECTRICAL CHARACTERISTICS

Rated Voltage	AC 50V (rms)
Rated Current	0.5A
Withstanding Voltage	500V AC (rms) 1minute
Insulation Resistance	1000MΩ min. (Initial 500V DC)
Contact Resistance	40mΩ max.

MECHANICAL CHARACTERISTICS

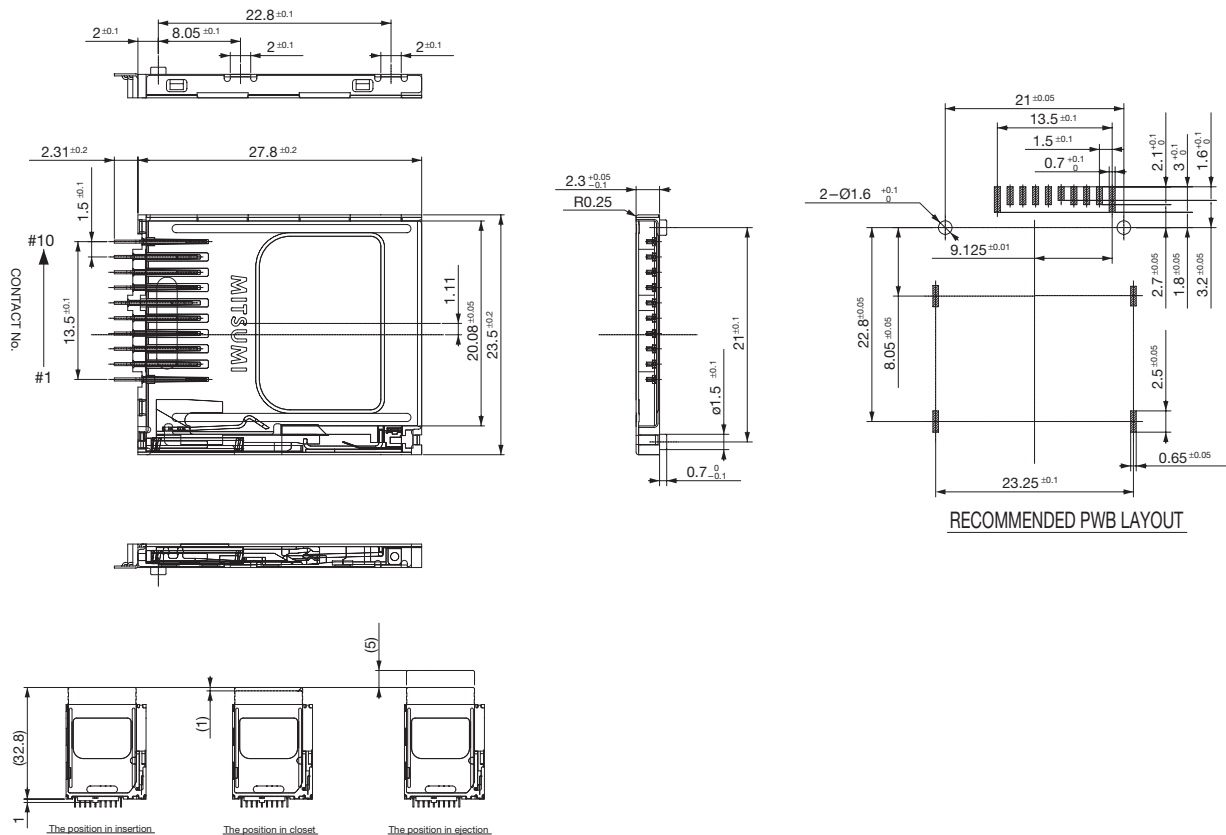
Life (Matching Cycle)	12,000 times
Card Insertion Force	4.90N (0.5kgf)~8.83N (0.9kgf)
Eject Force	4.90N (0.5kgf)~8.83N (0.9kgf)
Using Temperature Range	-25~+60°C max. 95%

MATERIAL & FINISH

Component Parts	Material	Finish
Housing	LCP resin	(Black)
Contact	Copper Alloy	Gold plating
Plate	Copper Alloy	-
Half Lock	SUS	-
Slider	PA9T resin	(Black)
Coil Spring	SUS	-
Lock Pin	SUS	-
Lock Spring	SUS	-
Shaft	SUS	-

DIMENSIONS

CIM-G24 Series



Unit : mm