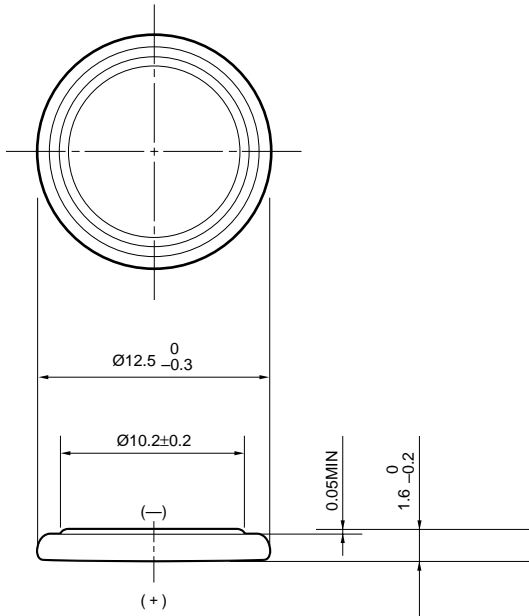


Lithium Manganese Dioxide Battery

CR1216

Dimensions (mm)

Diameter : 12.5mm
 Height : 1.60mm



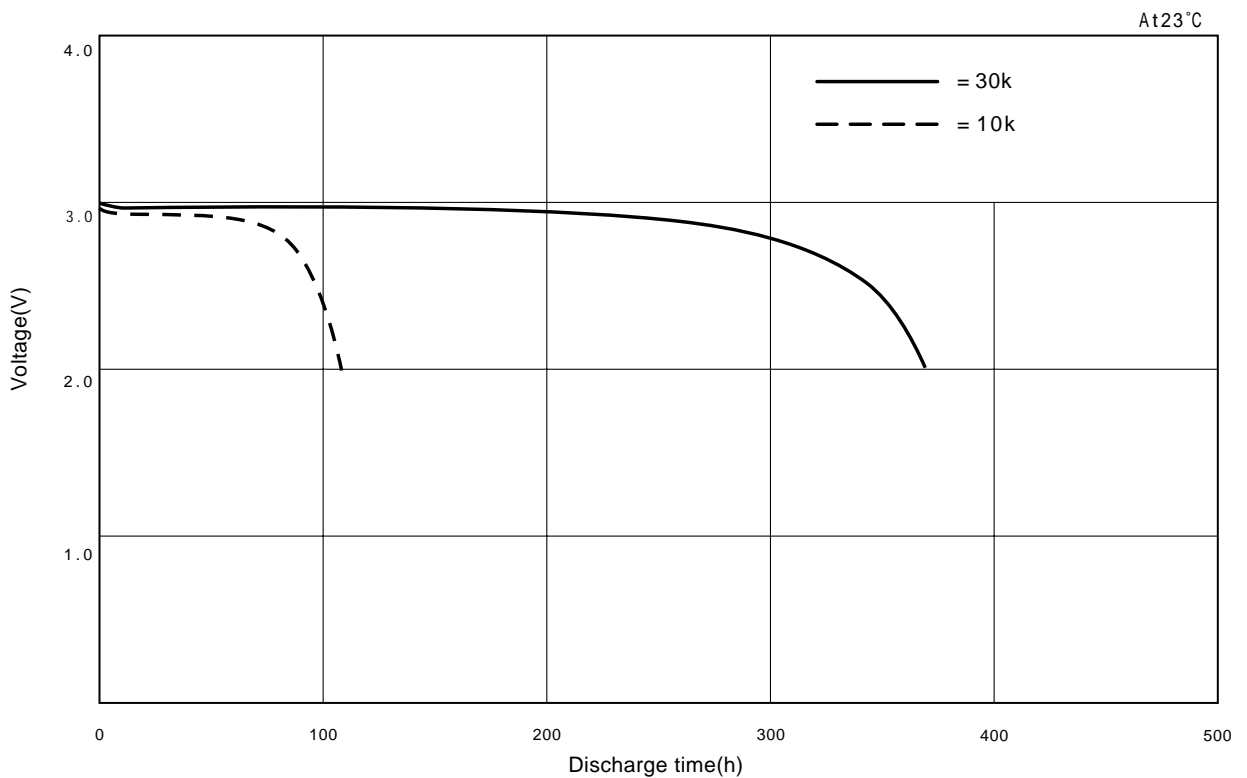
Specifications

Nominal Voltage	3V
Nominal Capacity (2.5V cutoff)	30mAh
Recommended Continuous Drain	0.1mA
Recommended Pulse Drain	5mA
Weight	0.7g

Applications

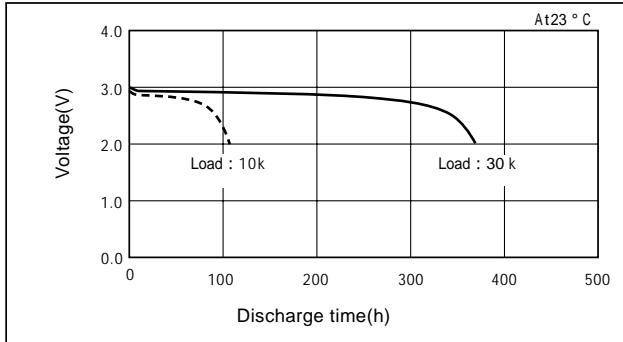
Electronic Watch or Clock
 Electronic Calculator
 Memory Back-up Power Source for SRAM or Real Time Clock (RTC)

Discharge Characteristic

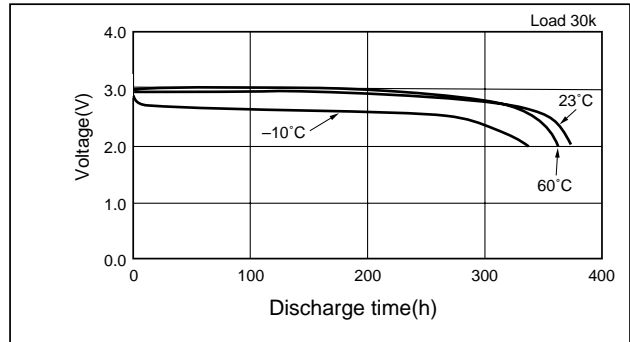


DATA SHEET

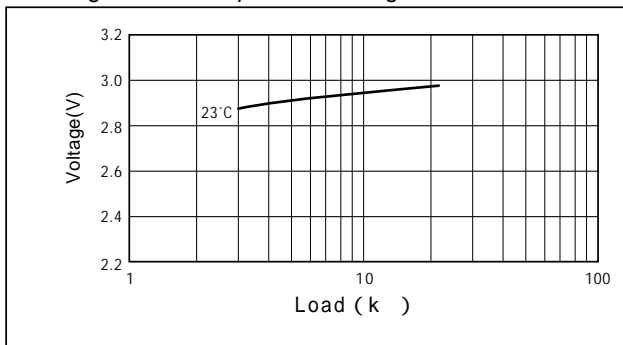
Discharge Characteristics on Load



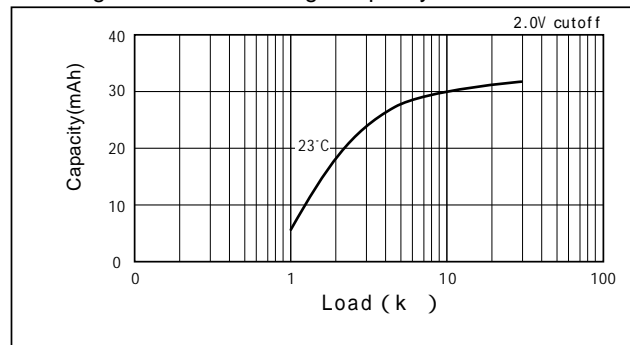
Discharge Characteristics on Temperature



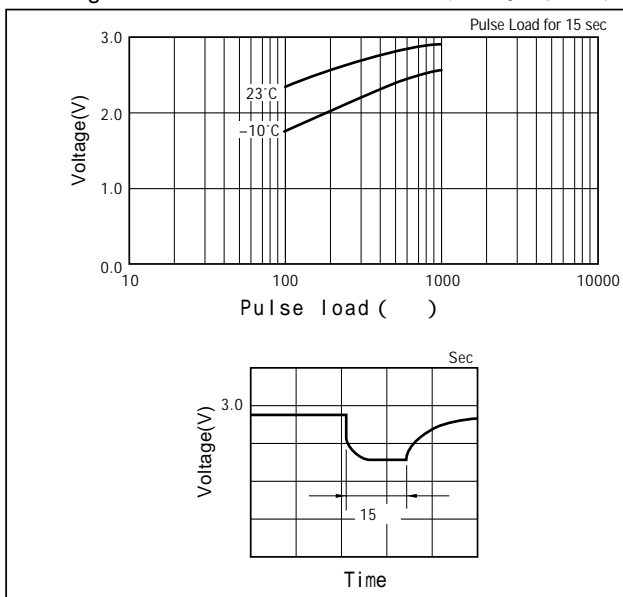
Discharge Load vs. Operation Voltage (Discharge depth 40%)



Discharge Load vs. Discharge Capacity



Discharge Characteristics on Pulse Load (Discharge depth 40%)



Storage Characteristics

