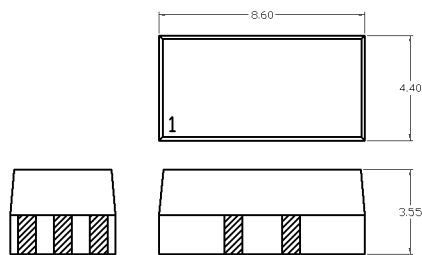
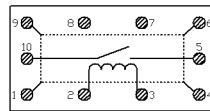


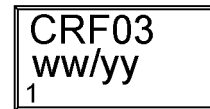
DIMENSIONS (mm)
 Unspecified Tolerances ± 0.25mm



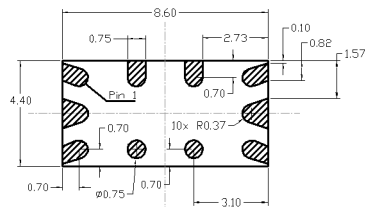
SCHEMATIC
 Top View



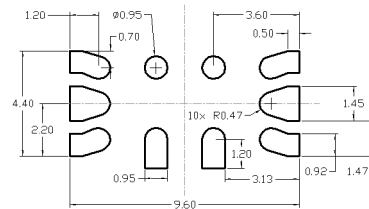
MARKING
 Top View



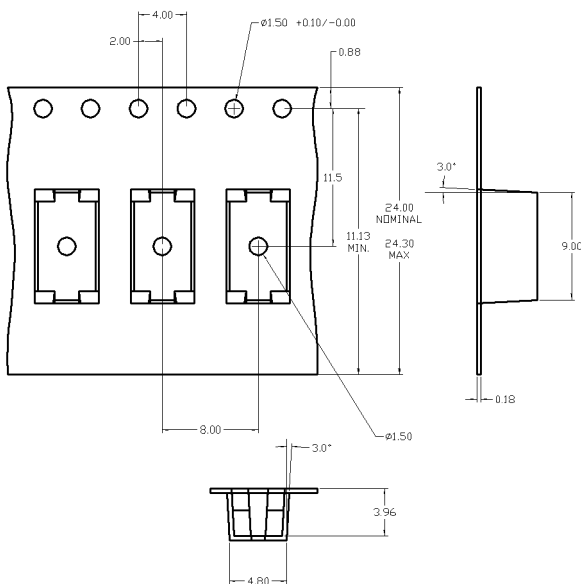
RELAY PAD LAYOUT (mm)
 Bottom View



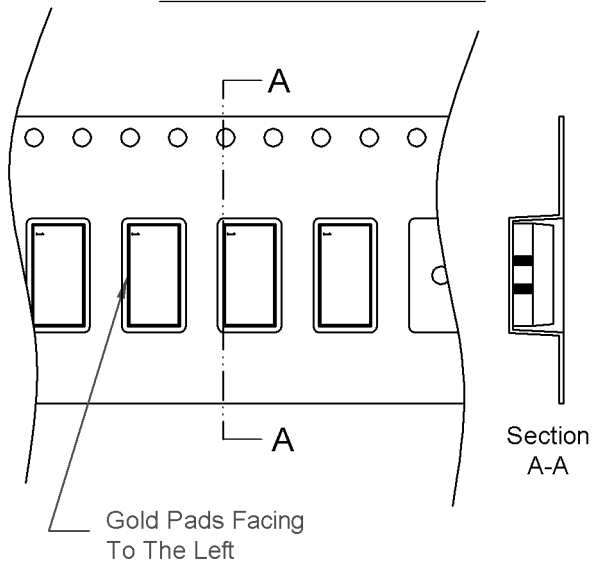
RECOMMENDED PCB LAYOUT (mm)
 Top View



PACKAGING (mm)



RELAY PACKAGING ORIENTATION



unspecified tolerances acc. to DIN ISO 2768-m



Europe: +49 / 7731 8399 0 | Email: info@meder.com
 USA: +1 / 508 295 0771 | Email: salesusa@meder.com
 Asia: +852 / 2955 1682 | Email: salesasia@meder.com

Item No.:
9603180022
 Item:
CRF03-1A

Products for tomorrow...

Coil Data at 20 °C	Conditions	Min	Typ	Max	Unit
Coil resistance		63	70	77	Ohm
Coil voltage			3		VDC
Rated power			129		mW
Pull-In voltage				2,25	VDC
Drop-Out voltage		0,45			VDC

Contact data 80/1	Conditions	Min	Typ	Max	Unit
Contact-No.			80/1		
Contact-form			A		
Contact-material			Iridium		
Contact rating	Any DC combination of V & A			10	W
Switching voltage	DC or Peak AC			170	V
Switching current	DC or Peak AC			0,5	A
Carry current	DC or Peak AC			1	A
Contact resistance static	Measured with 40% overdrive			200	mOhm
Contact resistance dynamic	Maximum value 1,5 ms after excitation			250	mOhm
Insulation resistance	RH <45 %, 100 V test voltage	1			TOhm
Breakdown voltage	according to IEC 255-5	250			VDC
Operate time incl. bounce	measured with 40% overdrive			0,6	ms
Release	measured with no coil excitation			0,05	ms
Capacity	@ 10 kHz across open switch		0,4		pF

Special Product Data	Conditions	Min	Typ	Max	Unit
Insulation resistance Coil/Contact	RH <45%, 200 VDC test voltage	10			TOhm
Dielectric Strength Coil/Contact	according to EN 60255-5	1,5			kV DC
Housing material			Ceramic		
Sealing compound			mineral filled epoxy		
Connection pins			Au plated		
Remark			RF Data available upon request, please consult factory		

Environmental data	Conditions	Min	Typ	Max	Unit
Shock	1/2 sine wave duration 11ms			50	g
Vibration	from 10 - 2000 Hz			20	g
Operating temperature		-40		125	°C
Storage temperature		-55		125	°C
Soldering temperature	max. 5 sec			260	°C
Washability			fully sealed		

Modifications in the sense of technical progress are reserved

Designed at: 18.12.02 Designed by: LMOLONEY
 Last Change at: 05.10.11 Last Change by: CRUF

Approval at: 23.11.09 Approval by: TLANE
 Approval at: 05.10.11 Approval by: CRUF

Version: 04