



# SERIES EG SWITCHES

## SLIDE SWITCHES

TACT. SWITCHES

NAVIGATION SWITCHES

PUSHBUTTON SWITCHES

TOGGLE SWITCHES

ROCKER SWITCHES

SLIDE SWITCHES

SNAP-ACTION SWITCHES

DIP SWITCHES

KEYLOCK SWITCHES

ROTARY SWITCHES

DETECTOR SWITCHES

CAP. OPTIONS



### SPECIFICATIONS

Contact Resistance:	Less than 20 milliohms
Insulation Resistance:	500VDC – 100 milliohms
Dielectric Strength:	500V AC for 1 minute between any terminal and frame
Operating Temperature:	-20°C to +70°C (-4°F to +158°F)

### FEATURES & BENEFITS

- ▶ Variety of package styles & sizes
- ▶ Up to 6 poles
- ▶ Variety of functions
- ▶ Positive detent
- ▶ SMT options

### APPLICATIONS/MARKETS

- ▶ Computer servers/peripherals
- ▶ Consumer electronics
- ▶ Instrumentation
- ▶ Test & measurement

### MATERIALS

Contact: Silver plated copper alloy

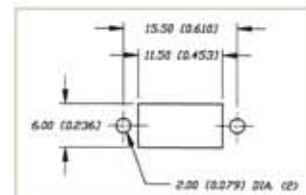
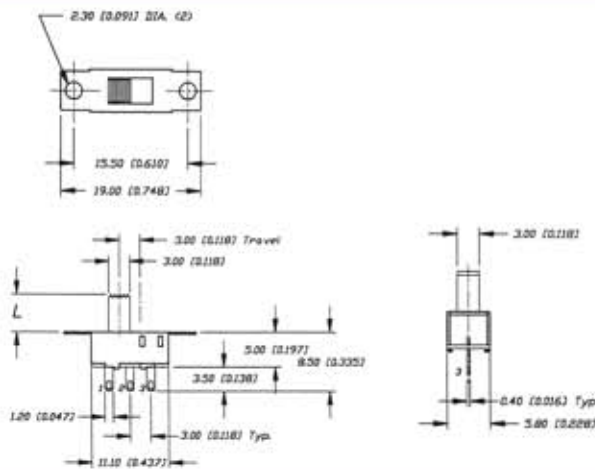
▶ ▶ ▶ Example Ordering Number  
EG-1201A

### HOW TO ORDER

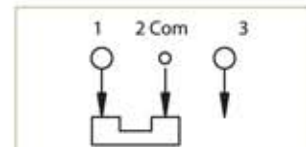


Specifications subject to change without notice.

## EG 1201



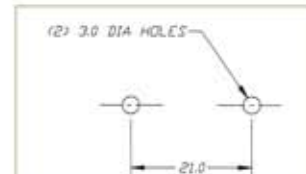
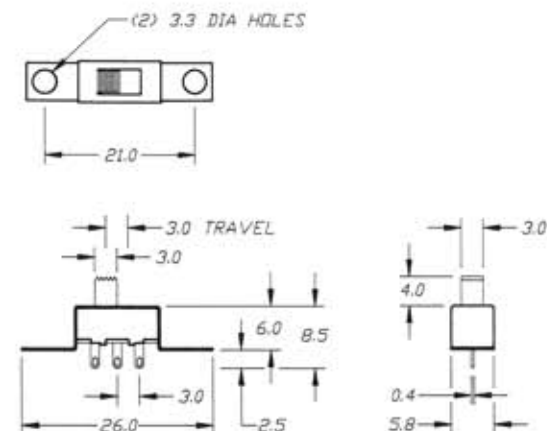
PANEL MOUNT



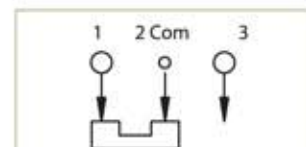
SCHEMATIC

Model No.	L
EG1201	4
EG1201A	5.5

## EG 1205



PANEL MOUNT



SCHEMATIC

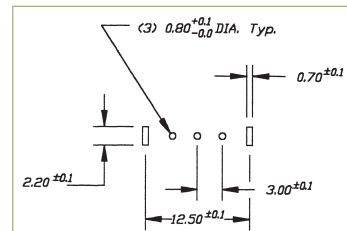
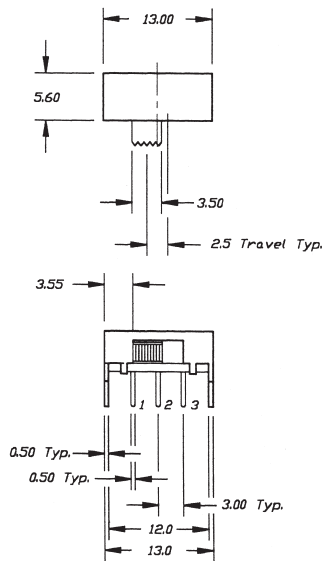
Model No.	L
EG1205	4
EG1205A	5.5



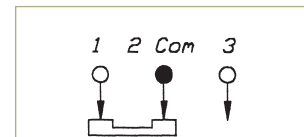
### EG 1206



Model No.	L
EG1206	3
EG1206A	6

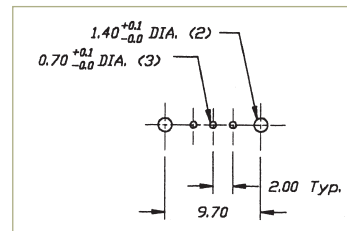
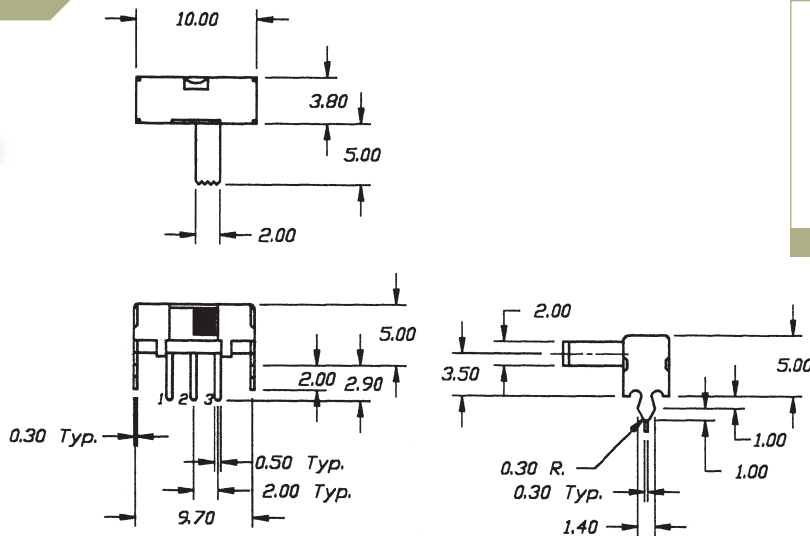
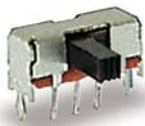


P.C. MOUNTING

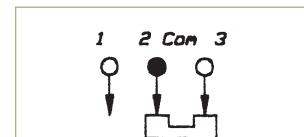


SCHEMATIC

### EG 1213

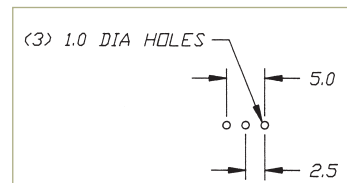
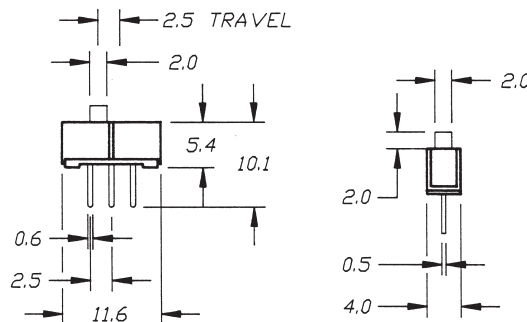


P.C. MOUNTING

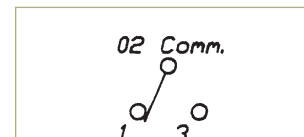


SCHEMATIC

### EG 1218



P.C. MOUNTING



SCHEMATIC

TACT SWITCHES

NAVIGATION SWITCHES

PUSHBUTTON SWITCHES

TOGGLE SWITCHES

ROCKER SWITCHES

SLIDE SWITCHES

SNAP-ACTION SWITCHES

DIP SWITCHES

KEYLOCK SWITCHES

ROTARY SWITCHES

DETECTOR SWITCHES

CAP OPTIONS



# SERIES EG SWITCHES

## SLIDE SWITCHES

TACT SWITCHES

NAVIGATION SWITCHES

PUSHBUTTON SWITCHES

TOGGLE SWITCHES

ROCKER SWITCHES

SLIDE SWITCHES

SNAP-ACTION SWITCHES

DIP SWITCHES

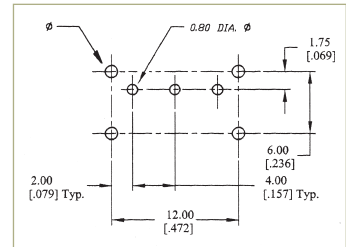
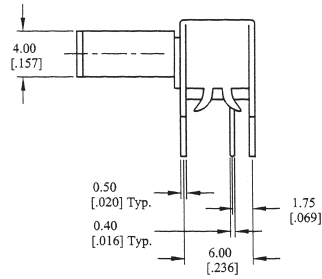
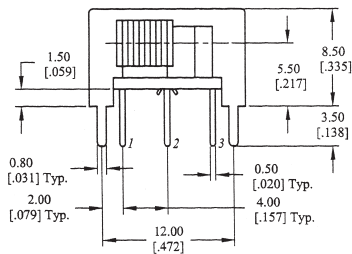
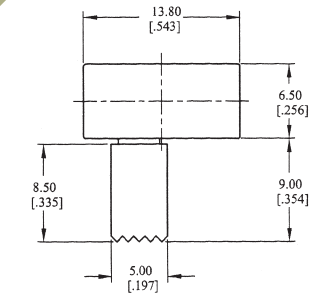
KEYLOCK SWITCHES

ROTARY SWITCHES

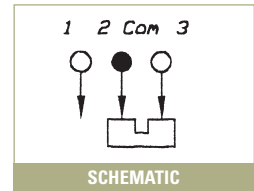
DETECTOR SWITCHES

CAP OPTIONS

### EG 1224

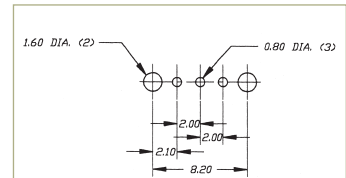
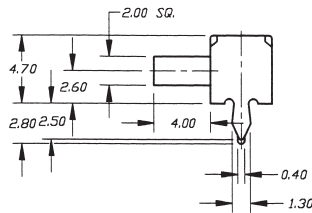
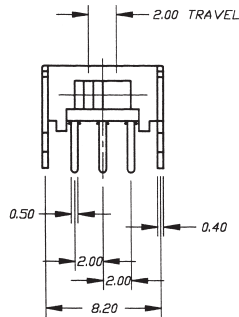
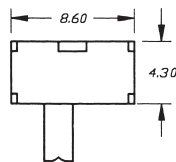


P.C. MOUNTING

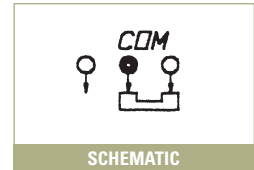


SCHEMATIC

### EG 1247

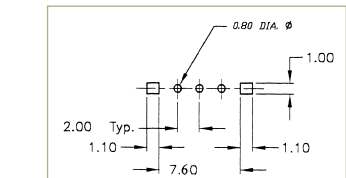
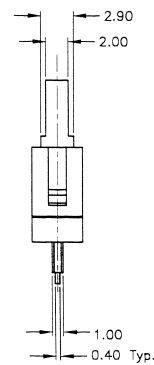
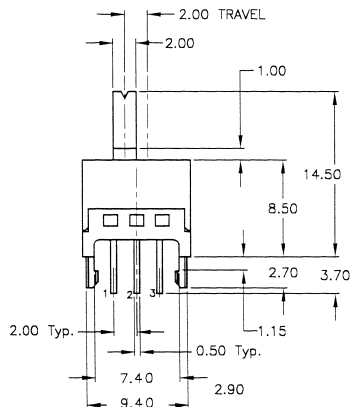
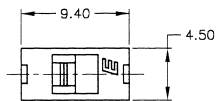


P.C. MOUNTING

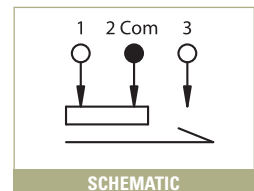


SCHEMATIC

### EG 1248



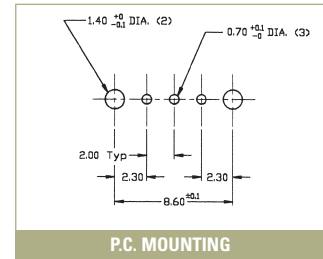
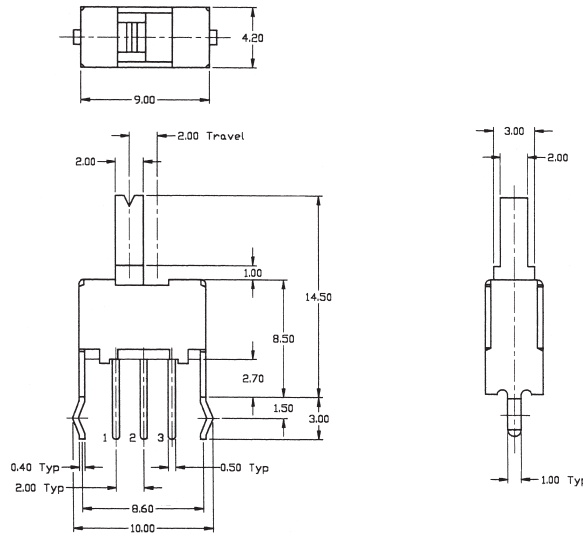
P.C. MOUNTING



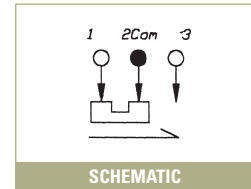
SCHEMATIC



### EG 1249



P.C. MOUNTING

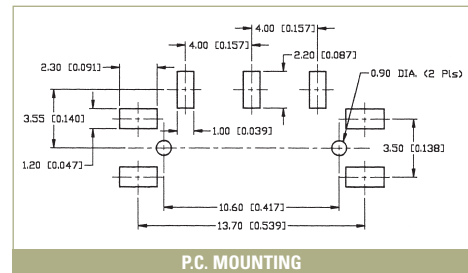
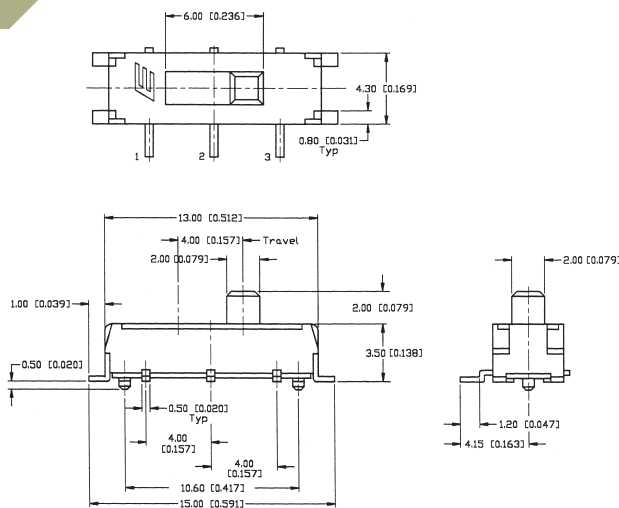


SCHEMATIC

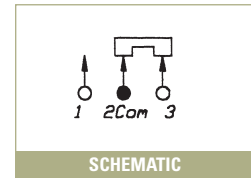
### EG 1253



Momentary Only

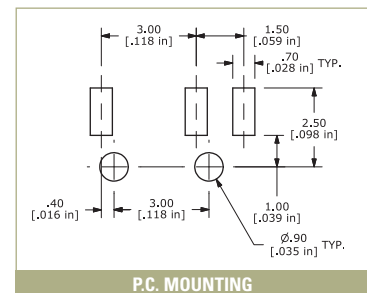
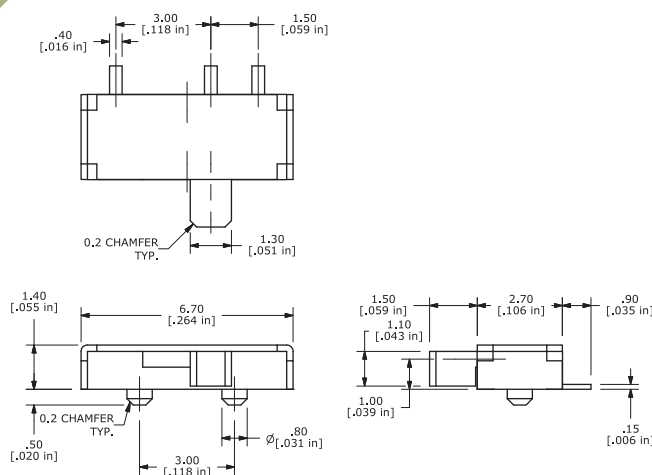


P.C. MOUNTING

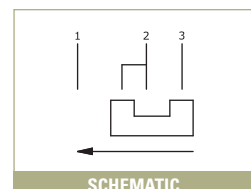


SCHEMATIC

### EG 1260



P.C. MOUNTING



SCHEMATIC

# SERIES EG SWITCHES

## SLIDE SWITCHES

TACT SWITCHES

NAVIGATION SWITCHES

PUSHBUTTON SWITCHES

TOGGLE SWITCHES

ROCKER SWITCHES

SLIDE SWITCHES

SNAP-ACTION SWITCHES

DIP SWITCHES

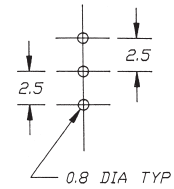
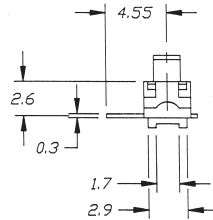
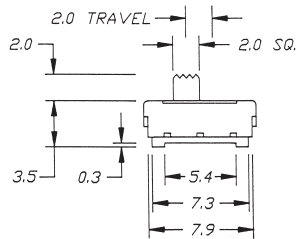
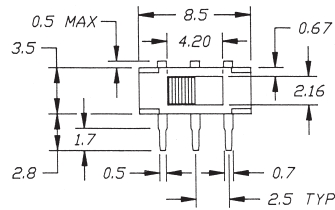
KEYLOCK SWITCHES

ROTARY SWITCHES

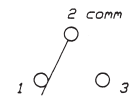
DETECTOR SWITCHES

CAP OPTIONS

### EG 1270

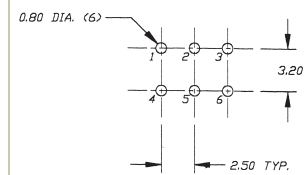
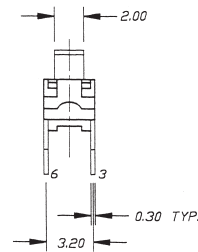
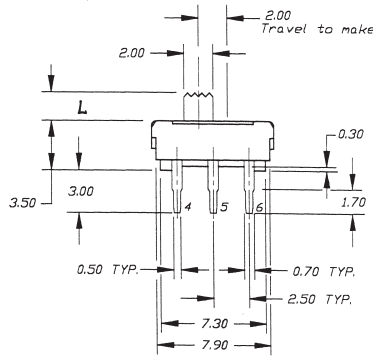
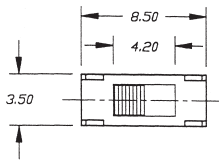


P.C. MOUNTING

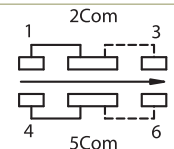


SCHEMATIC

### EG 1271



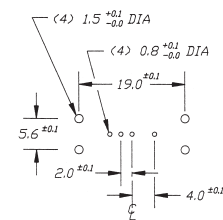
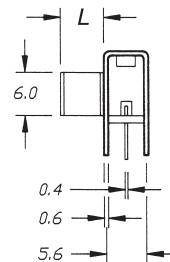
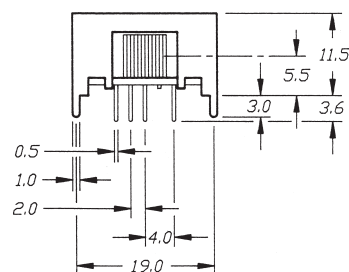
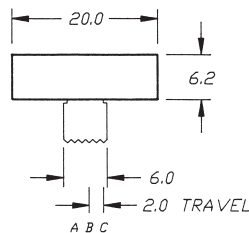
P.C. MOUNTING



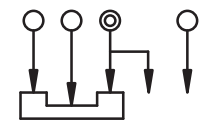
SCHEMATIC

Model No.	L
EG1271	2
EG1271A	4.4

### EG 1302



P.C. MOUNTING

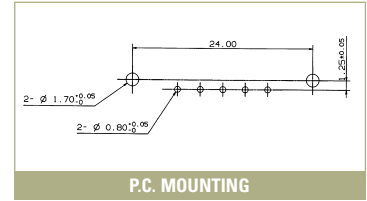
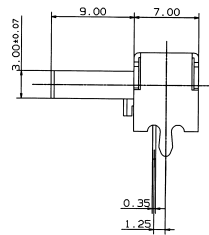
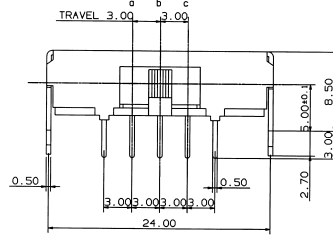
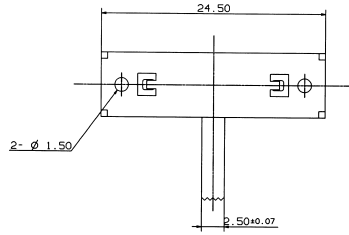


SCHEMATIC

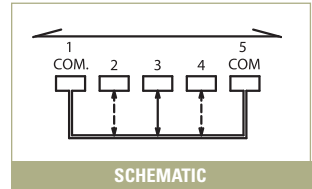
Model No.	L
EG1302	6
EG1302A	9



### EG 1307

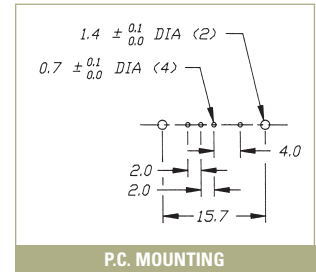
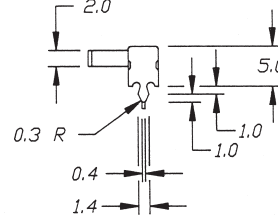
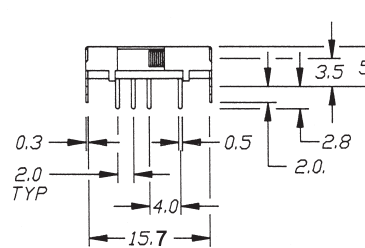
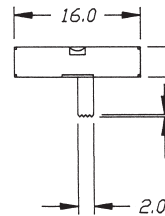


P.C. MOUNTING

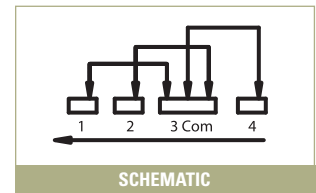


SCHEMATIC

### EG 1313

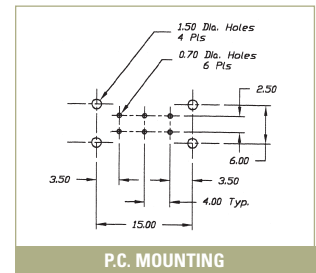
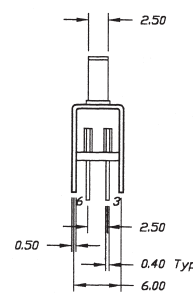
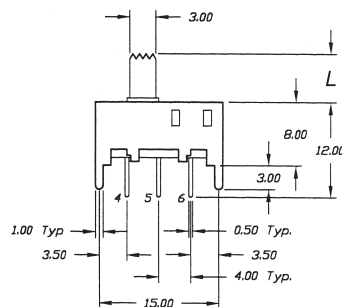
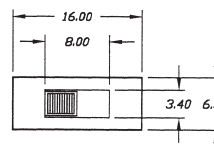


P.C. MOUNTING

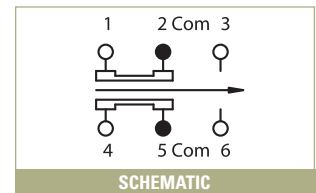


SCHEMATIC

### EG 2201



P.C. MOUNTING



SCHEMATIC

Model No.	L
EG2201	3
EG2201A	6
EG2201B	9
EG2201C	12
EG2201D	4.5

TACT SWITCHES

NAVIGATION SWITCHES

PUSHBUTTON SWITCHES

TOGGLE SWITCHES

ROCKER SWITCHES

SLIDE SWITCHES

SNAP-ACTION SWITCHES

DIP SWITCHES

KEYLOCK SWITCHES

ROTARY SWITCHES

DETECTOR SWITCHES

CAP OPTIONS



# SERIES EG SWITCHES

## SLIDE SWITCHES

TACT SWITCHES

NAVIGATION SWITCHES

PUSHBUTTON SWITCHES

TOGGLE SWITCHES

ROCKER SWITCHES

SLIDE SWITCHES

SNAP-ACTION SWITCHES

DIP SWITCHES

KEYLOCK SWITCHES

ROTARY SWITCHES

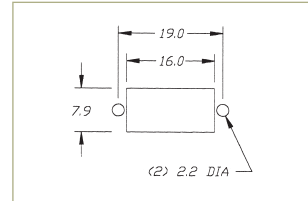
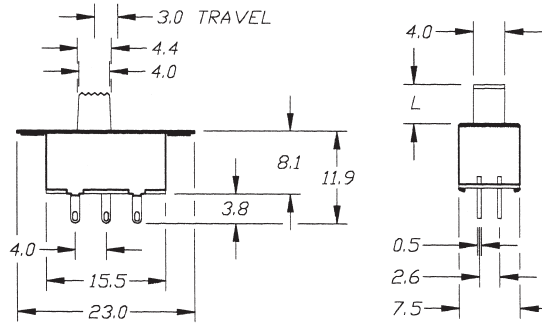
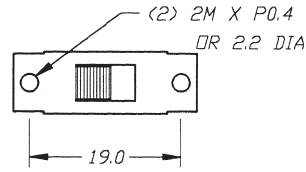
DETECTOR SWITCHES

CAP OPTIONS

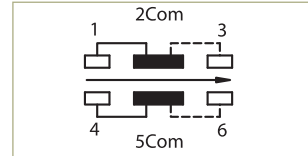
### EG 2202



Model No.	L
EG2202	5
EG2202A	7.5
EG2202B	9



P.C. MOUNTING

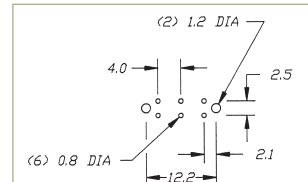
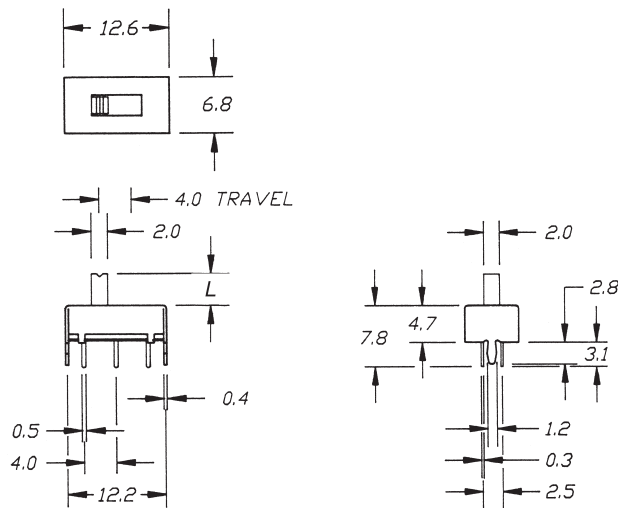


SCHEMATIC

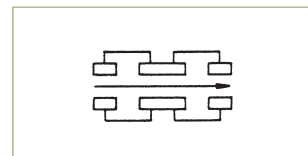
### EG 2205



Model No.	L
EG2205	4
EG2205A	2

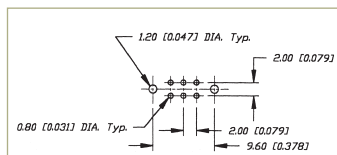
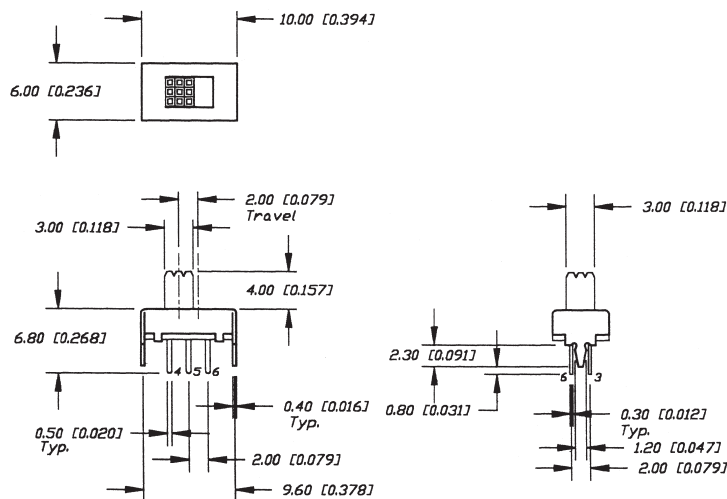


P.C. MOUNTING

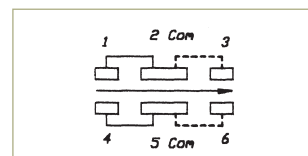


SCHEMATIC

### EG 2207



P.C. MOUNTING



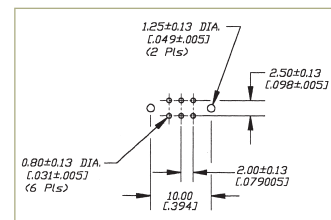
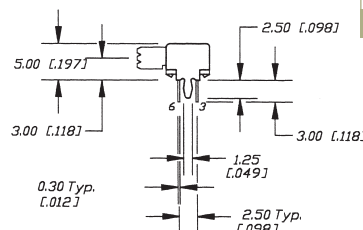
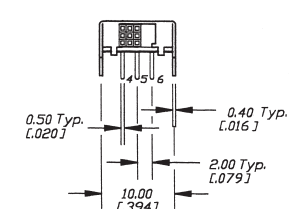
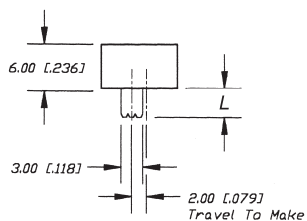
SCHEMATIC



### EG 2208

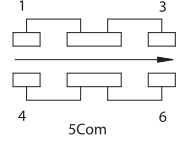


Model No.	L
EG2208	4
EG2208A	6



P.C. MOUNTING

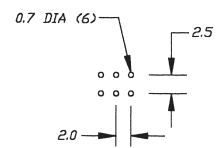
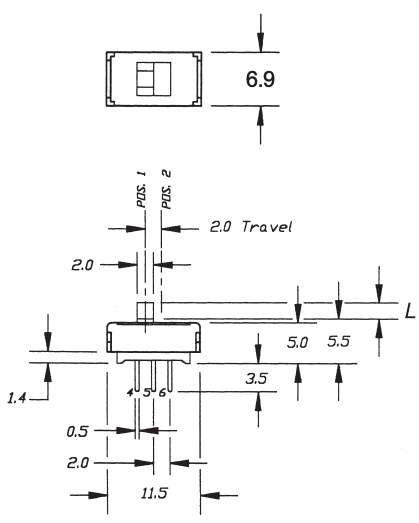
SCHEMATIC



### EG 2209

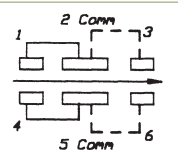


Model No.	L
EG2209	2
EG2209A	4

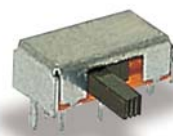


P.C. MOUNTING

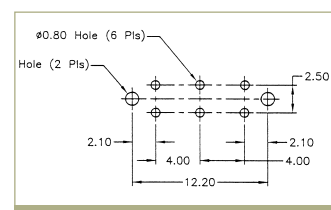
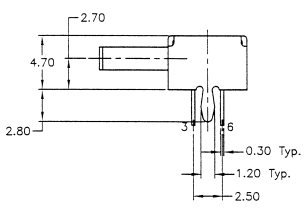
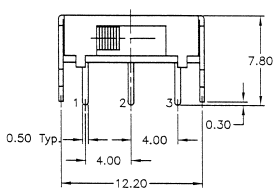
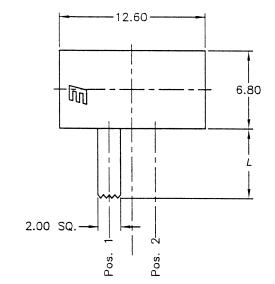
SCHEMATIC



### EG 2210

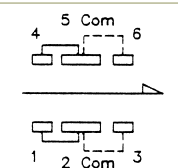


Model No.	L
EG2210	6
EG2210A	4
EG2210D	2



P.C. MOUNTING

SCHEMATIC



TACT SWITCHES

NAVIGATION SWITCHES

PUSHBUTTON SWITCHES

TOGGLE SWITCHES

ROCKER SWITCHES

SLIDE SWITCHES

SNAP-ACTION SWITCHES

DIP SWITCHES

KEYLOCK SWITCHES

ROTARY SWITCHES

DETECTOR SWITCHES

CAP OPTIONS





# SERIES EG SWITCHES

## SLIDE SWITCHES

TACT SWITCHES

NAVIGATION SWITCHES

PUSHBUTTON SWITCHES

TOGGLE SWITCHES

ROCKER SWITCHES

SLIDE SWITCHES

SNAP-ACTION SWITCHES

DIP SWITCHES

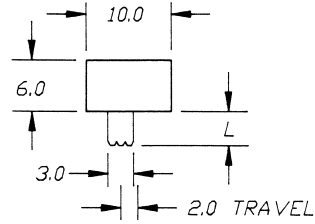
KEYLOCK SWITCHES

ROTARY SWITCHES

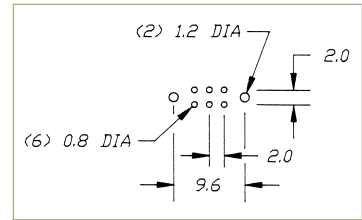
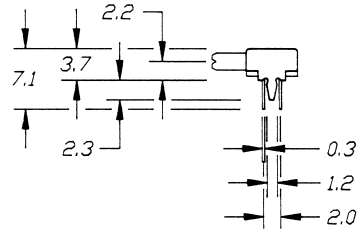
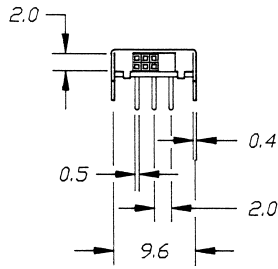
DETECTOR SWITCHES

CAP OPTIONS

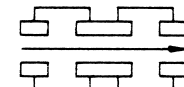
### EG 2211



Model No.	L
EG2211	4
EG2211A	2

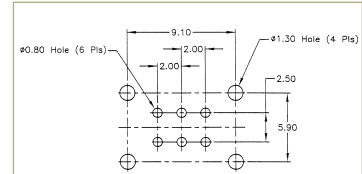
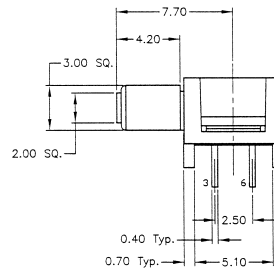
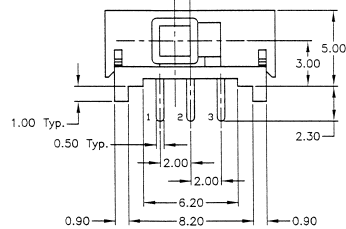
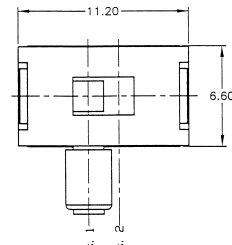
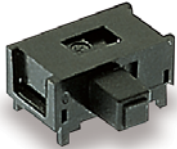


P.C. MOUNTING

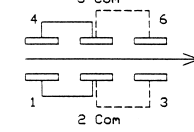


SCHEMATIC

### EG 2214

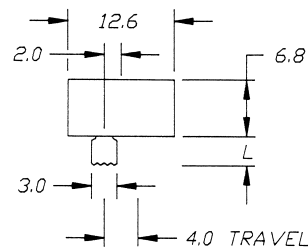


P.C. MOUNTING

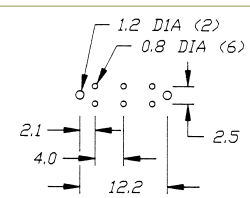
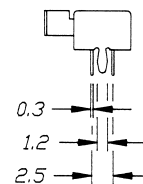
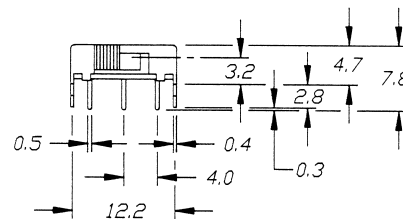


SCHEMATIC

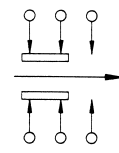
### EG 2215



Model No.	L
EG2215	3.5
EG2215A	6



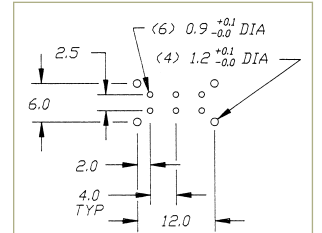
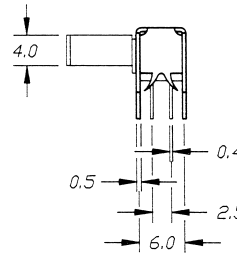
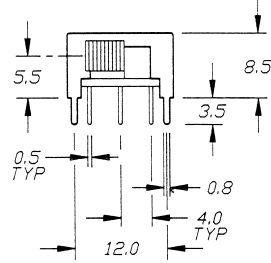
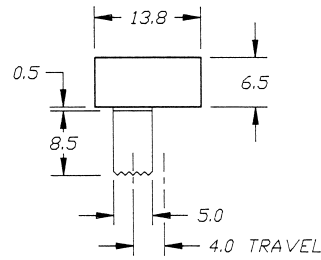
P.C. MOUNTING



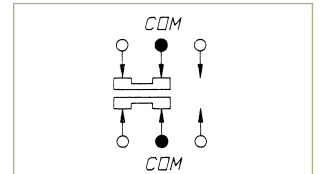
SCHEMATIC



### EG 2219



P.C. MOUNTING

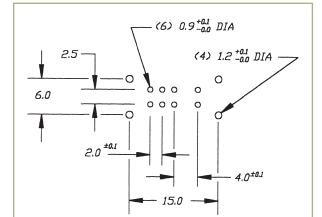
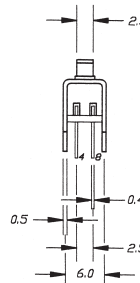
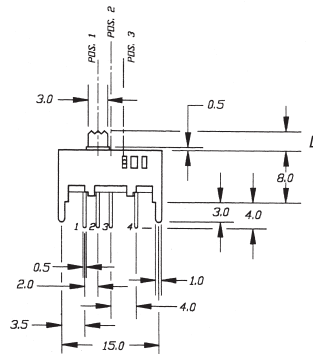
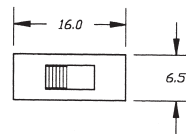


SCHEMATIC

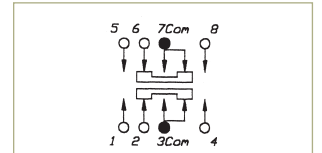
### EG 2301



Model No.	L
EG2301	3
EG2301A	6
EG2301B	9
EG2301C	12

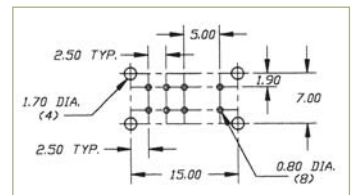
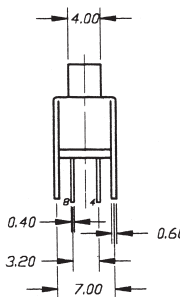
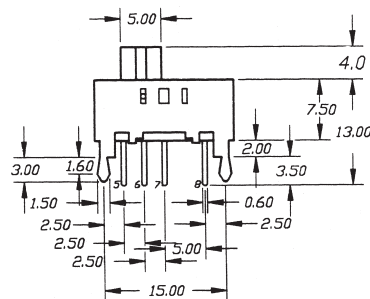
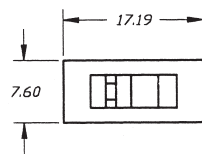


P.C. MOUNTING

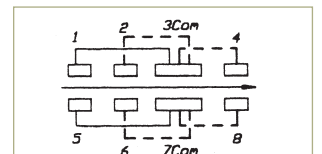


SCHEMATIC

### EG 2303



P.C. MOUNTING



SCHEMATIC

TACT SWITCHES

NAVIGATION SWITCHES

PUSHBUTTON SWITCHES

TOGGLE SWITCHES

ROCKER SWITCHES

SLIDE SWITCHES

SNAP-ACTION SWITCHES

DIP SWITCHES

KEYLOCK SWITCHES

ROTARY SWITCHES

DETECTOR SWITCHES

CAP OPTIONS



# SERIES EG SWITCHES

## SLIDE SWITCHES

TACT SWITCHES

NAVIGATION SWITCHES

PUSHBUTTON SWITCHES

TOGGLE SWITCHES

ROCKER SWITCHES

SLIDE SWITCHES

SNAP-ACTION SWITCHES

DIP SWITCHES

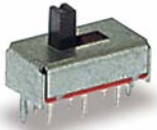
KEYLOCK SWITCHES

ROTARY SWITCHES

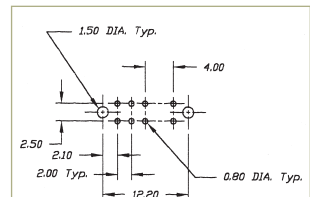
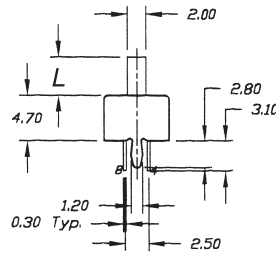
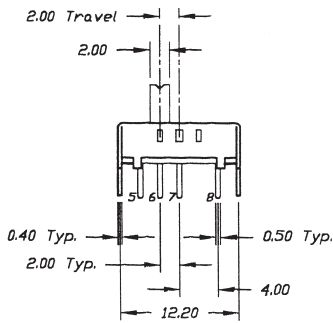
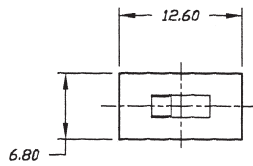
DETECTOR SWITCHES

CAP OPTIONS

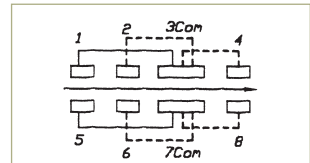
### EG 2305



Model No.	L
EG2305	4
EG2305A	2



P.C. MOUNTING

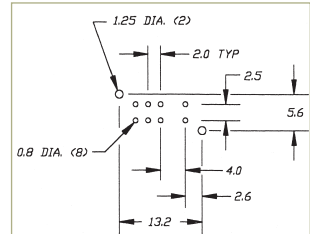
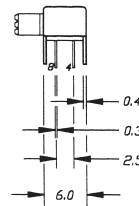
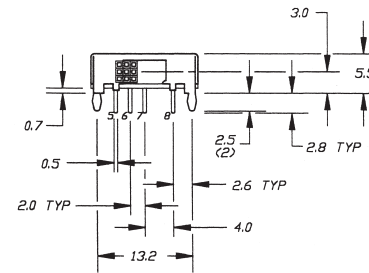
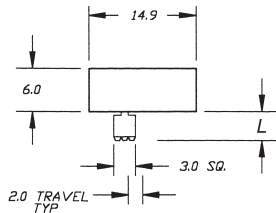


SCHEMATIC

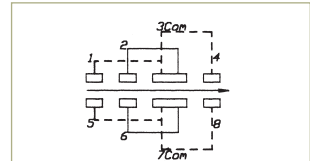
### EG 2308



Model No.	L
EG2308	4
EG2308A	6



P.C. MOUNTING

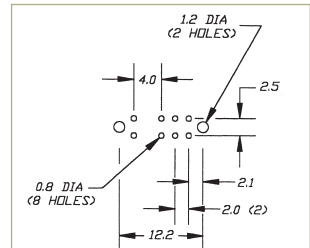
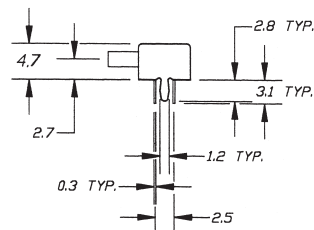
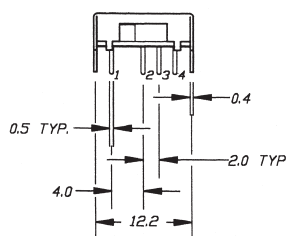
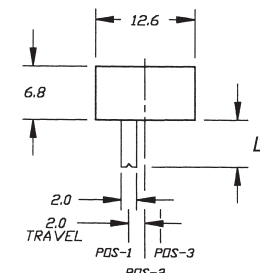


SCHEMATIC

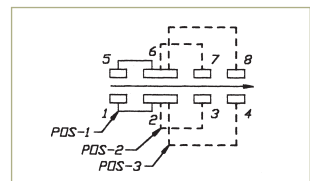
### EG 2310



Model No.	L
EG2310	6
EG2310A	4



P.C. MOUNTING



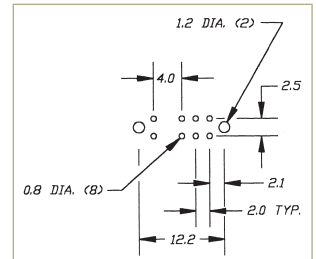
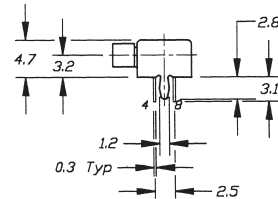
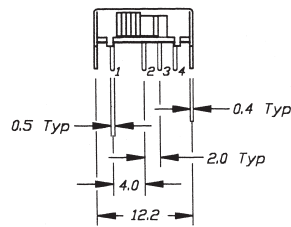
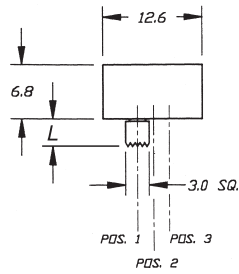
SCHEMATIC



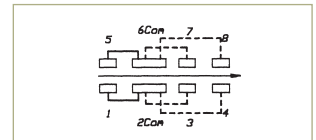
### EG 2315



Model No.	L
EG2315	3.5
EG2315A	6

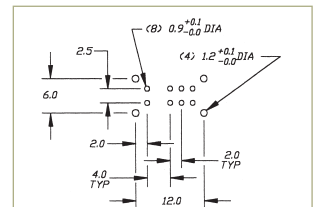
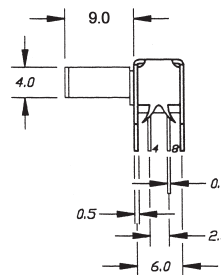
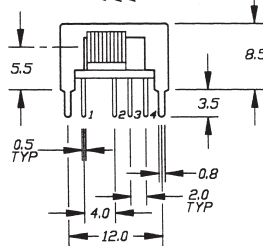
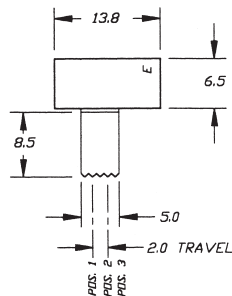


P.C. MOUNTING

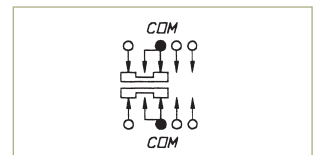


SCHEMATIC

### EG 2319

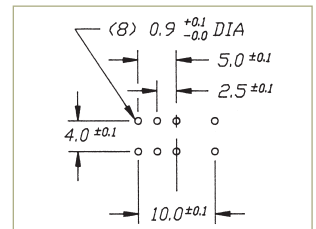
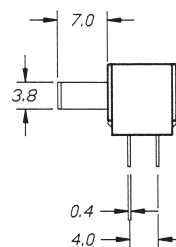
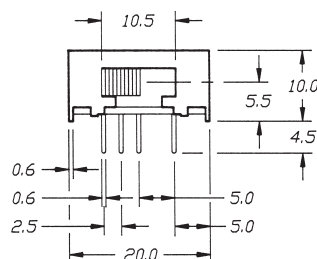
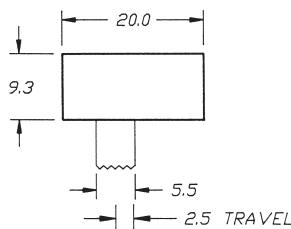


P.C. MOUNTING

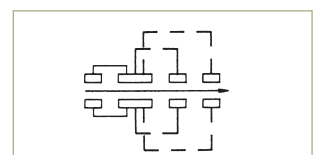


SCHEMATIC

### EG 2322



P.C. MOUNTING



SCHEMATIC

TACT SWITCHES  
 NAVIGATION SWITCHES  
 PUSHBUTTON SWITCHES  
 TOGGLE SWITCHES  
 ROCKER SWITCHES  
 SLIDE SWITCHES  
 SNAP-ACTION SWITCHES  
 DIP SWITCHES  
 KEYLOCK SWITCHES  
 ROTARY SWITCHES  
 DETECTOR SWITCHES  
 CAP OPTIONS



# SERIES EG SWITCHES

## SLIDE SWITCHES

TACT SWITCHES

NAVIGATION SWITCHES

PUSHBUTTON SWITCHES

TOGGLE SWITCHES

ROCKER SWITCHES

SLIDE SWITCHES

SNAP-ACTION SWITCHES

DIP SWITCHES

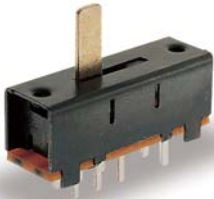
KEYLOCK SWITCHES

ROTARY SWITCHES

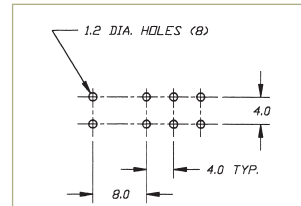
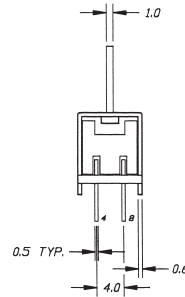
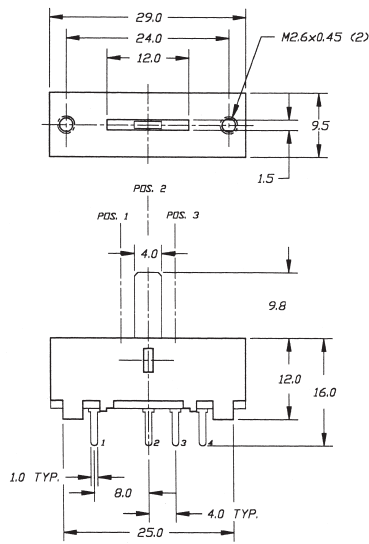
DETECTOR SWITCHES

CAP OPTIONS

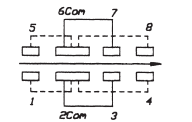
### EG 2323



Model No.	Mtg. Hole
EG2323	None
EG2323A	M2.6 x P0.45

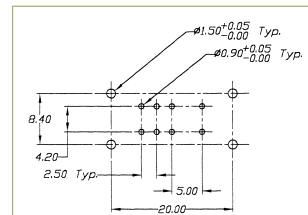
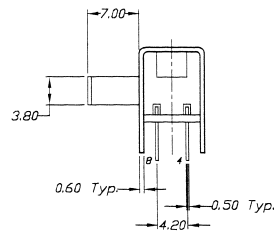
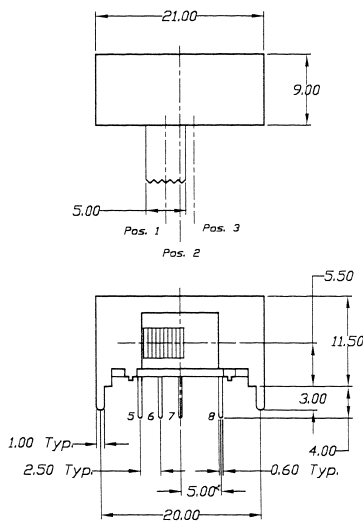
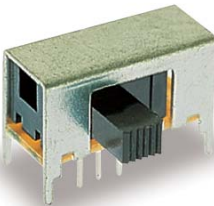


P.C. MOUNTING

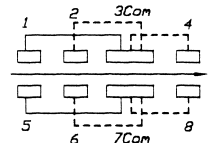


SCHEMATIC

### EG 2324



P.C. MOUNTING

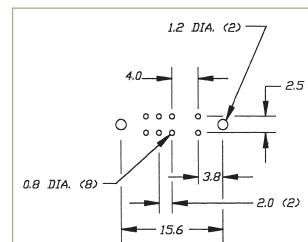
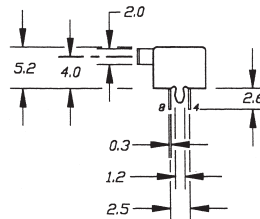
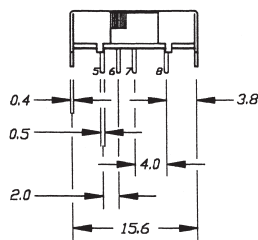
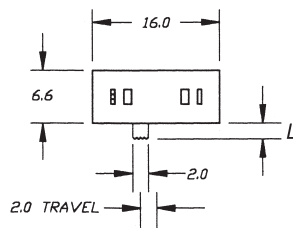


SCHEMATIC

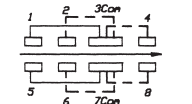
### EG 2325



Model No.	L
EG2325	2
EG2325A	6



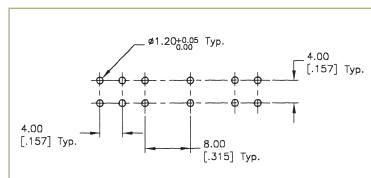
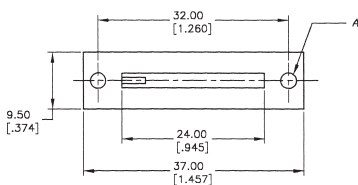
P.C. MOUNTING



SCHEMATIC

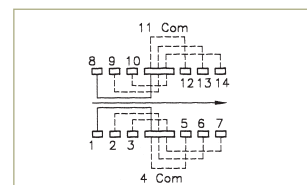
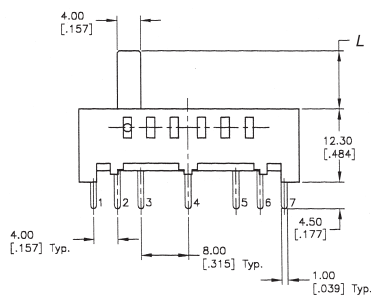


### EG 2601



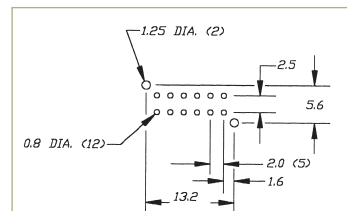
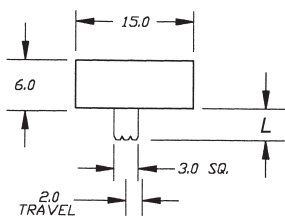
P.C. MOUNTING

Model No.	L	"A"
EG2601	9.8	None
EG2601A	9.8	M2.6 x P0.45
EG2601B	6.5	M2.6 x P0.45
EG2601C	6.5	None



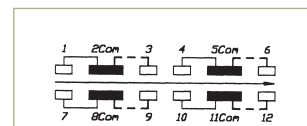
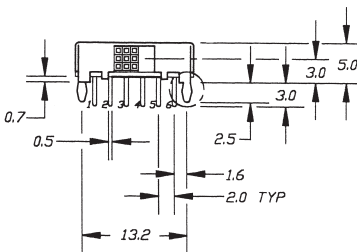
SCHEMATIC

### EG 4208

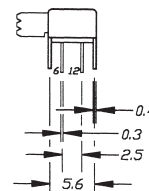


P.C. MOUNTING

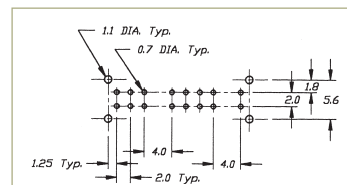
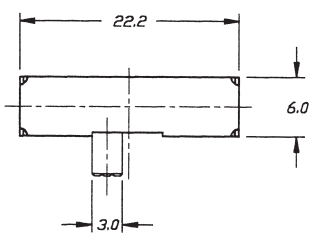
Model No.	L
EG4208	4
EG4208A	6



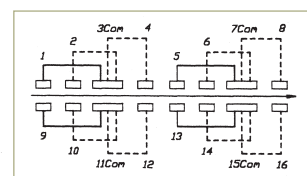
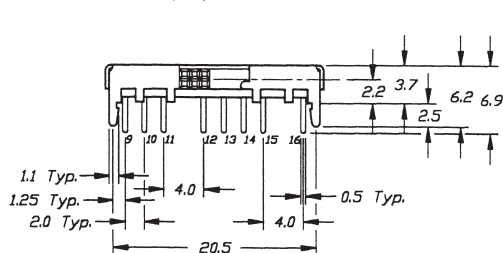
SCHEMATIC



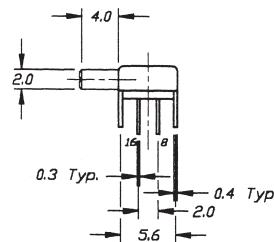
### EG 4311



P.C. MOUNTING



SCHEMATIC



TACT SWITCHES

NAVIGATION SWITCHES

PUSHBUTTON SWITCHES

TOGGLE SWITCHES

ROCKER SWITCHES

SLIDE SWITCHES

SNAP-ACTION SWITCHES

DIP SWITCHES

KEYLOCK SWITCHES

ROTARY SWITCHES

DETECTOR SWITCHES

CAP OPTIONS



# SERIES EG SWITCHES

## SLIDE SWITCHES

TACT SWITCHES

NAVIGATION SWITCHES

PUSHBUTTON SWITCHES

TOGGLE SWITCHES

ROCKER SWITCHES

SLIDE SWITCHES

SNAP-ACTION SWITCHES

DIP SWITCHES

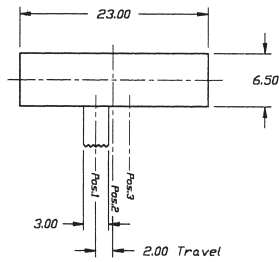
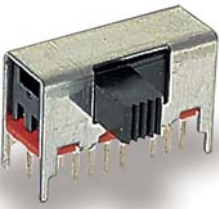
KEYLOCK SWITCHES

ROTARY SWITCHES

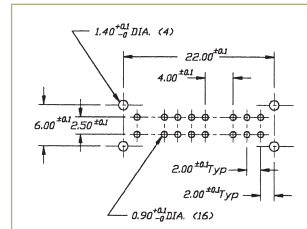
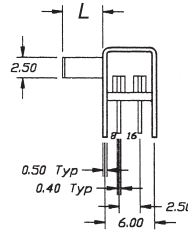
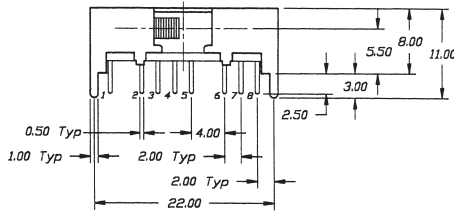
DETECTOR SWITCHES

CAP OPTIONS

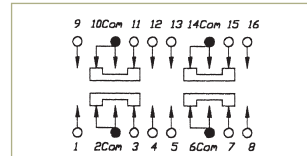
### EG 4319



Model No.	L
EG4319	5
EG4319A	6

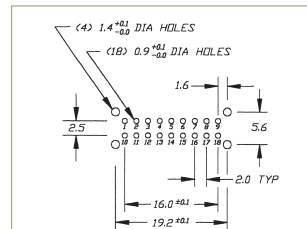
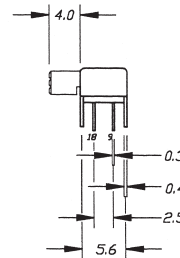
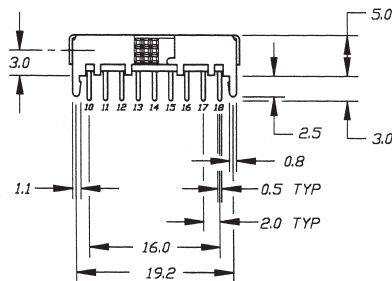
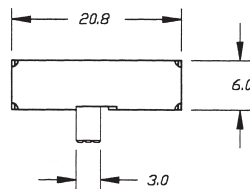


P.C. MOUNTING

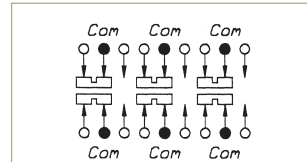


SCHEMATIC

### EG 6201



P.C. MOUNTING



SCHEMATIC