

### HIGH EFFICIENCY RECTIFIER

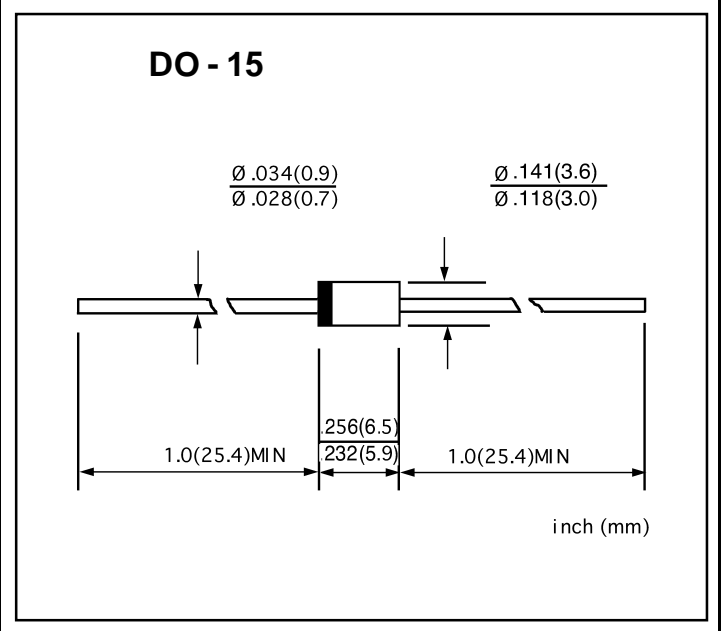
VOLTAGE RANGE: 200 V  
CURRENT: 1.0 A

#### FEATURES

- ◇ Low cost
- ◇ Diffused junction
- ◇ Low leakage
- ◇ Low forward voltage drop
- ◇ High current capability
- ◇ Easily cleaned with alcohol, Isopropanol and similar solvents
- ◇ The plastic material carries U/L recognition 94V-0

#### MECHANICAL DATA

- ◇ Case: JEDEC DO--15, molded plastic
- ◇ Terminals: Axial lead, solderable per MIL- STD-202, Method 208
- ◇ Polarity: Color band denotes cathode
- ◇ Weight: 0.014 ounces, 0.39 grams
- ◇ Mounting position: Any



#### MAXIMUM RATINGS AND ELECTRICAL CHARACTERISTICS

Ratings at 25°C ambient temperature unless otherwise specified.

Single phase, half wave, 60 Hz, resistive or inductive load. For capacitive load, derate by 20%.

		ERB35 - 02	UNITS
Maximum recurrent peak reverse voltage	$V_{RRM}$	200	V
Maximum RMS voltage	$V_{RMS}$	140	V
Maximum DC blocking voltage	$V_{DC}$	200	V
Maximum average forward rectified current 9.5mm lead length, @ $T_A=75^\circ C$	$I_{F(AV)}$	1.0	A
Peak forward surge current 8.3ms single half-sine-wave superimposed on rated load @ $T_J=125^\circ C$	$I_{FSM}$	30.0	A
Maximum instantaneous forward voltage @ 1.0A	$V_F$	1.1	V
Maximum reverse current @ $T_A=25^\circ C$ at rated DC blocking voltage @ $T_A=100^\circ C$	$I_R$	5.0 100.0	$\mu A$
Maximum reverse recovery time (Note1)	$t_{rr}$	100	ns
Typical junction capacitance (Note2)	$C_J$	20	pF
Typical thermal resistance (Note3)	$R_{\theta JA}$	60	$^\circ C/W$
Operating junction temperature range	$T_J$	- 55 ---- + 150	$^\circ C$
Storage temperature range	$T_{STG}$	- 55 ---- + 150	$^\circ C$

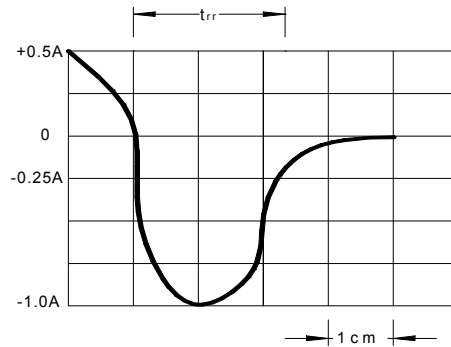
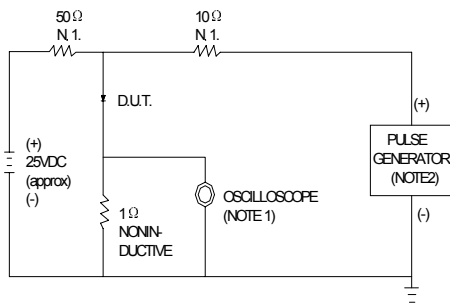
NOTE: 1. Measured with  $I_F=0.5A$ ,  $I_R=1A$ ,  $I_{rr}=0.25A$ .

2. Measured at 1.0MHz and applied reverse voltage of 4.0V DC.

3. Thermal resistance from junction to ambient.

www.galaxycn.com

**FIG.1--TEST CIRCUIT DIAGRAM AND REVERSE RECOVERY TIME CHARACTERISTIC**

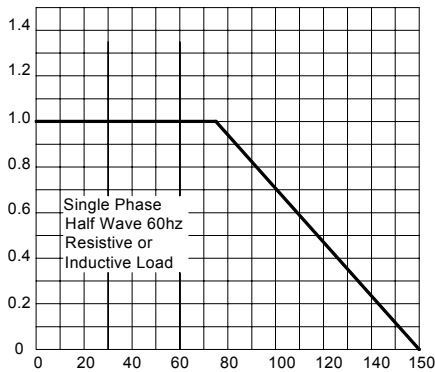


NOTES: 1. RISE TIME=7ns MAX.INPUT IMPEDANCE=1MΩ.22pF  
2. RISE TIME=10ns MAX.SOURCE IMPEDANCE=50Ω.

SET TIME BASE FOR 20/30 ns/cm

**FIG.2 --FORWARD DERATING CURVE**

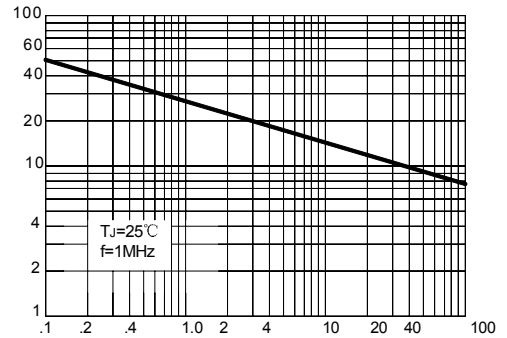
AVERAGE FORWARD RECTIFIED CURRENT. AMPERES



AMBIENT TEMPERATURE. °C

**FIG.3--TYPICAL JUNCTION CAPACITANCE**

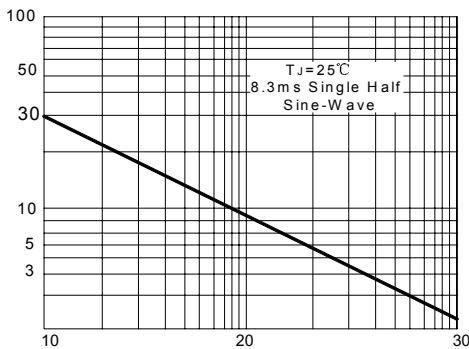
JUNCTION CAPACITANCE,pF



REVERSE VOLTAGE,VOLTS

**FIG.4--PEAK FORWARD SURGE CURRENT**

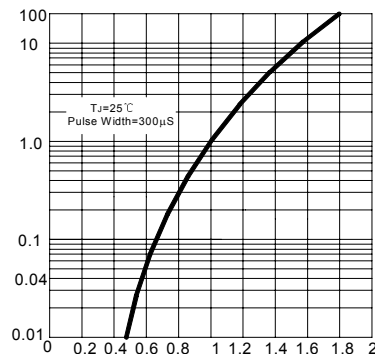
PEAK FORWARD SURGE CURRENT. AMPERES



NUMBER OF CYCLES AT 60Hz

**FIG.5 -- TYPICAL FORWARD CHARACTERISTIC**

INSTANTANEOUS FORWARD CURRENT AMPERES



INSTANTANEOUS FORWARD VOLTAGE, VOLTS