



Terminal Block

SCREWLESS TYPE TERMINAL BLOCK

TÜV R50257486
E133988(R)

ETBM50 SERIES

SCREWLESS TYPE

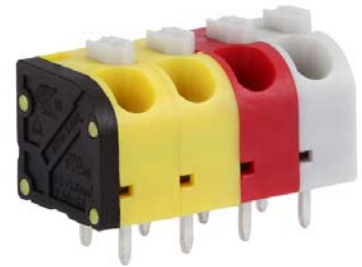
PITCH=5.0 / 10.0mm

FEATURES

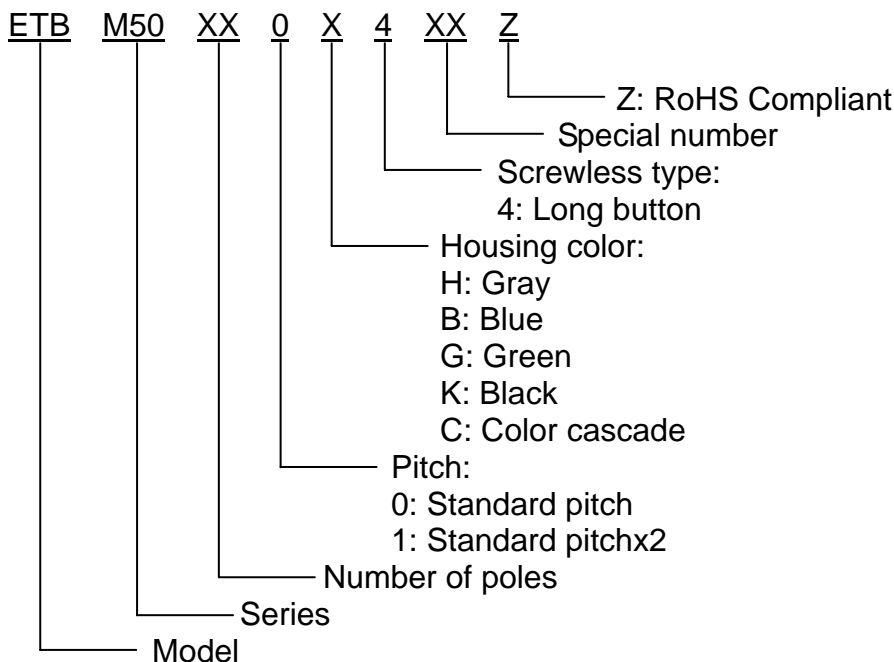
- Easy to assemble for any number of positions
- End stackable without any loss of P.C.B. space
- UL 94V-0 grade fire retardant engineering plastic used for the housing
- Be capable of clamping a wide range of wire diameters
- Screwless design can reduce time for connecting wire

SPECIFICATIONS

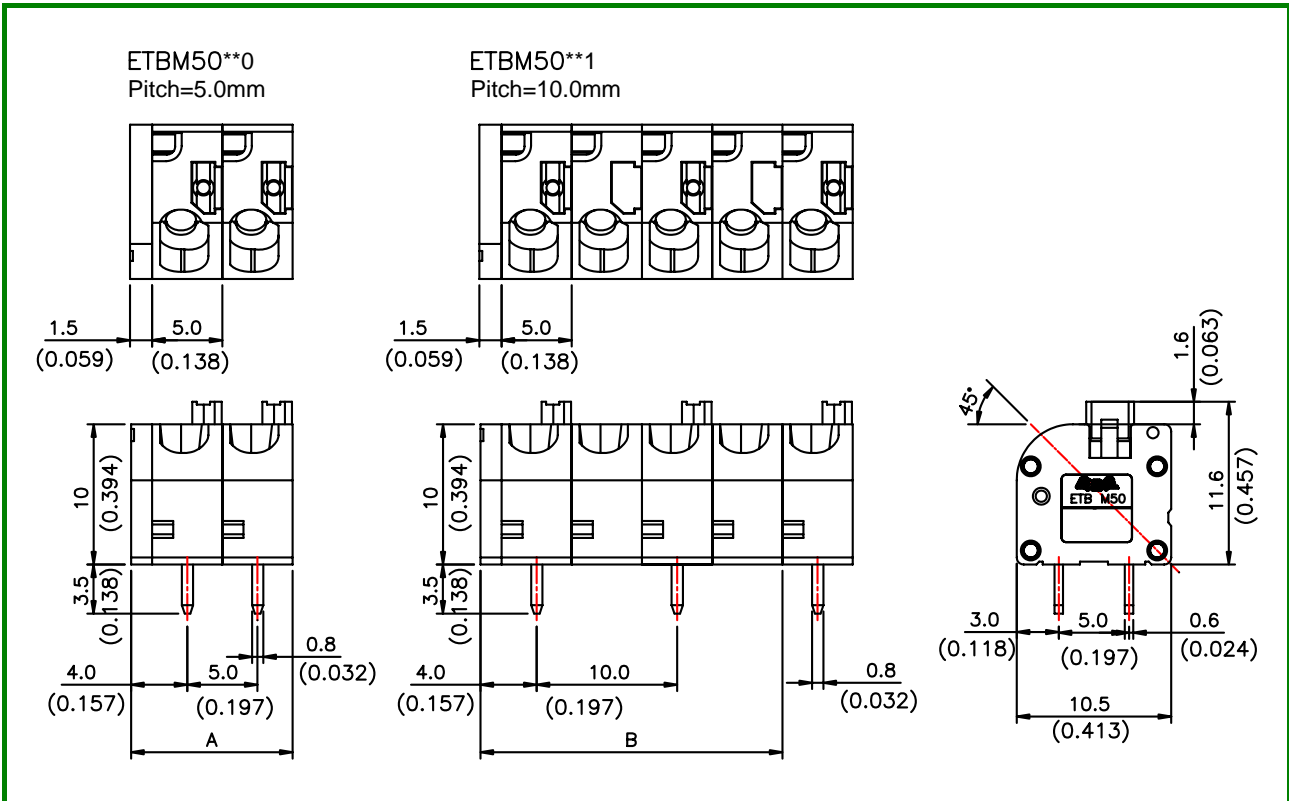
- Pitch 5.0mm, 10.0mm
- Wire range 26~14 AWG
- No. of pole per block 2P to 24P
- Rating 10 Amp, 300 VAC
- Housing PA66
- Terminals Tin plated over Copper Alloy
- Springs Stainless Steel
- Push button PA66
- Operating temperature -30°C ~ +110°C
(includes temperature rise limit)
- Stripping length 9mm
- UL Approval 300V, 10A, 26~14 AWG
- TUV Approval 250V, 0.34~0.75mm²



PART NUMBERING SYSTEM



DRAWING



| POLE DIM. | 2 | 3 | 4 | 5 | 6 | 7 | 8 | 9 | 10 | 11 | 12 | 13 |
|-----------|-----------------|-----------------|-----------------|-----------------|-----------------|-----------------|------------------|------------------|------------------|------------------|------------------|-----------------|
| A | 11.5 (0.453) | 16.5 (0.650) | 21.5 (0.846) | 26.5 (1.043) | 31.5 (1.240) | 36.5 (1.437) | 41.5 (1.634) | 46.5 (1.831) | 51.5 (2.028) | 56.5 (2.224) | 61.5 (2.421) | 66.5 (2.618) |
| B | 16.5 (0.650) | 26.5 (1.044) | 36.5 (1.437) | 46.5 (1.831) | 56.5 (2.224) | 66.5 (2.618) | 76.5 (3.012) | 86.5 (3.406) | 96.5 (3.799) | 106.5 (4.193) | 116.5 (4.587) | |
| POLE DIM. | 14 | 15 | 16 | 17 | 18 | 19 | 20 | 21 | 22 | 23 | 24 | |
| A | 71.5 (2.815) | 76.5 (3.012) | 81.5 (3.209) | 86.5 (3.406) | 91.5 (3.602) | 96.5 (3.799) | 101.5 (3.996) | 106.5 (4.193) | 111.5 (4.390) | 116.5 (4.587) | 121.5 (4.783) | |