

H-183-4

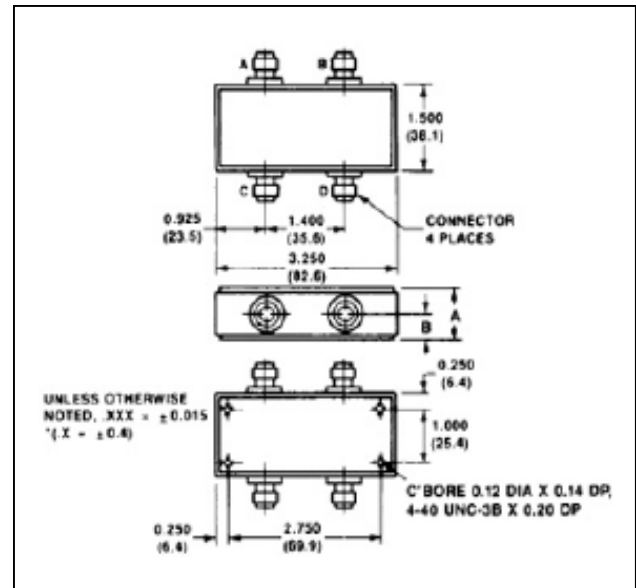
Microwave Hybrid Junction,
30 MHz - 3 GHz

Rev. V2

Features

- 0° - 180° Hybrid
- Seven Octave Frequency Range

C-11



Guaranteed Specifications*: From -55°C to +85°C

Frequency Range		30-3000 MHz
Insertion Loss (less coupling)	30-100 MHz 100-1500 MHz 1500-3000 MHz	1.2 dB Max 1.5 dB Max 2.5 dB Max
Isolation	30-100 MHz 100-1500 MHz 1500-3000 MHz	25 dB Min 20 dB Min 20 dB Min
Amplitude Balance	2-2000 MHz	0.4 dB Max
VSWR	30-100 MHz 100-1500 MHz 1500-3000 MHz	1.6:1 Max 1.6:1 Max 2.5:1 Max
Phase Balance	30-100 MHz 100-1500 MHz 1500-3000 MHz	2° Max 7.5° Max 15° Max

Operating Characteristics

	A	B
H-183-4	1.207 ± 0.020 (30.6 ± 0.5)	0.592 ± 0.020 (15.03 ± 0.5)

Parameter	Absolute Maximum
Impedance	50 Ohms Nominal
Input Power	5.0 Watt Max
Environmental	MIL-STD-883 screening available.

* All specifications apply with 50 ohm source and load impedance. This product contains elements protected by United States Patent Number 3,508,171.

- North America Tel: 800.366.2266
- Europe Tel: +353.21.244.6400
- India Tel: +91.80.4155721
- China Tel: +86.21.2407.1588

Visit www.macomtech.com for additional data sheets and product information.

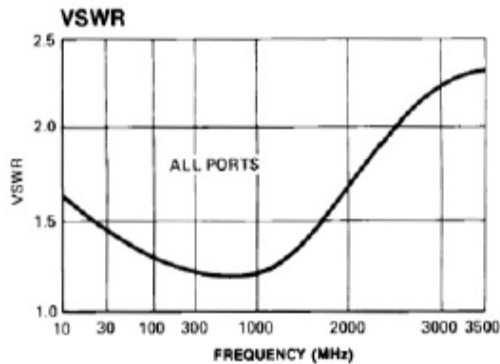
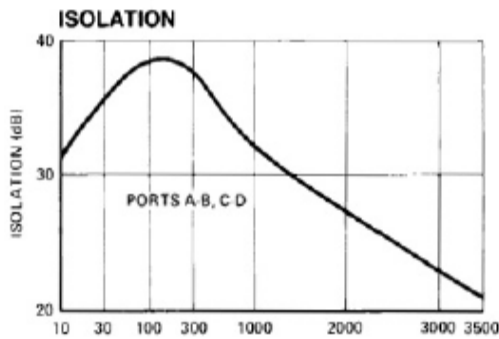
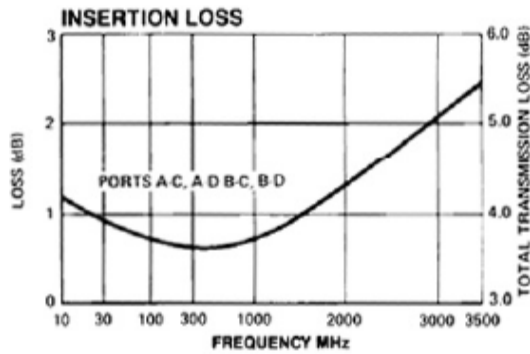
M/A-COM Technology Solutions Inc. and its affiliates reserve the right to make changes to the product(s) or information contained herein without notice.

H-183-4

Microwave Hybrid Junction,
30 MHz - 3 GHz

Rev. V2

Typical Performance Curves



Ordering Information

Part Number	Package
H-183-4 SMA	Connectorized

Functional Diagram

