

180° Two-Way Power Divider 5 - 1000 MHz

H-81-4

V2.00

Features

- Broadband Frequency Range
- Low Loss – Less Than 1.3 dB Max
- VSWR – 1.4:1 Max

Guaranteed Specifications*

(From -55°C to +85°C)

| Frequency Range | 5-1000 MHz | |
|-----------------------------------|--------------|------------|
| Insertion Loss (Less coupling) | 5-100 MHz | 0.7 dB Max |
| | 100-1000 MHz | 1.4 dB Max |
| Isolation | 5-100 MHz | 20 dB Min |
| | 100-1000 MHz | 25 dB Min |
| Amplitude Balance | 5-100 MHz | 0.2 dB Max |
| | 100-1000 MHz | 0.5 dB Max |
| Phase Balance | 5-100 MHz | 5° Max |
| | 100-1000 MHz | 2.5° Max |
| VSWR (All Ports) | 1.4:1 Max | |

Operating Characteristics

| | |
|--|-----------------|
| Impedance | 50 Ohms Nominal |
| Maximum Power Rating or Input Power | 2.0 Watts Max |
| Internal Load Dissipation | 0.5 Watt Max |
| Environmental | |

* All specifications apply with 50 ohm source and load impedance.

Ordering Information

| Part No. | Package |
|------------|---------------|
| H-81-4 N | Connectorized |
| H-81-4 SMA | Connectorized |
| H-81-4 TNC | Connectorized |
| H-81-4 BNC | Connectorized |

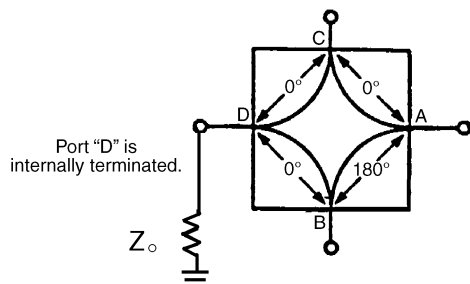
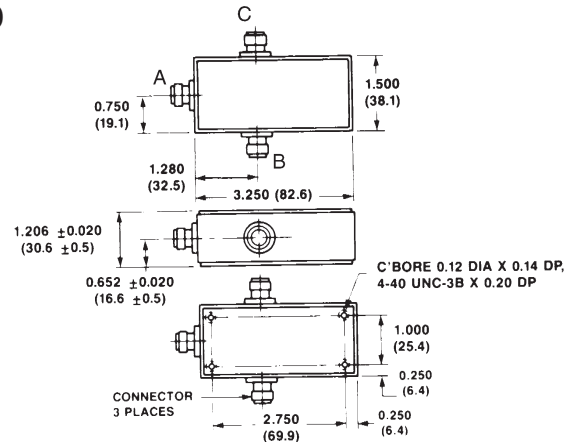


Figure 1. 2-way, In-Phase (180°) Power Divider/Summer, or ISO-T

C-19



Dimensions in () are in mm.

Unless Otherwise Noted: .xxx = ±0.015 (.xx = ±0.4)
WEIGHT (APPROX.): 5.47 OUNCES 155 GRAMS

Typical Performance

