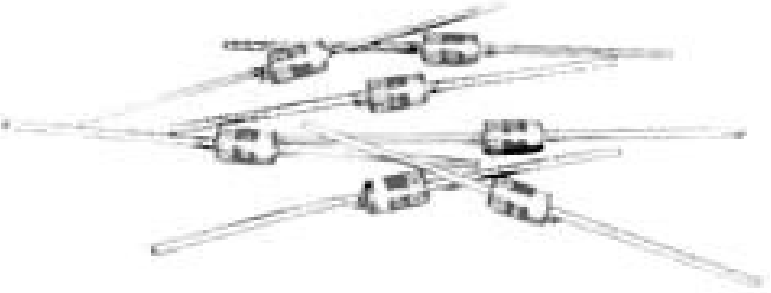




RAB HAB

3 AMPERE AXIAL LEAD RECTIFIERS

- PRV TO 1,000 VOLTS
- FAST RECOVERY (RAB SERIES)
- HIGH TEMPERATURE STABILITY
- HIGH SURGE CAPABILITY



| PRV | 50V | 100V | 200V | 400V | 600V | 800V | 1000V |
|-----------------------|--------|--------|--------|--------|--------|--------|--------|
| HAB STANDARD RECOVERY | HAB005 | HAB010 | HAB020 | HAB040 | HAB060 | HAB080 | HAB100 |
| RAB FAST RECOVERY | RAB005 | RAB010 | RAB020 | RAB040 | RAB060 | RAB080 | RAB100 |

| ELECTRICAL CHARACTERISTICS at $T_A=25^\circ\text{C}$ Unless Otherwise Specified | HAB SERIES STANDARD RECOVERY |
|---|--|
| Max. DC Reverse Current @ PRV and 25°C , I_R | 5 μA |
| Max. DC Reverse Current @ PRV and 100°C , I_R | 150 μA |
| Max. Forward Voltage Drop @3.0Amp, V_F | 1.1 Volts |
| Ambient Operating Temperature Range, T_A | -55°C to $+150^\circ\text{C}$ |
| Storage Temperature Range, T_{STG} | -55°C to $+150^\circ\text{C}$ |
| Max. One -Half Cycle Surge Current, $I_{FM}(\text{Surge}) @ 60\text{Hz}$ | 300 Amps |

| ELECTRICAL CHARACTERISTICS at $T_A=25^\circ\text{C}$ Unless Otherwise Specified | RAB SERIES FAST RECOVERY |
|---|--|
| Max. DC Reverse Current @ PRV and 25°C , I_R | 5 μA |
| Max. DC Reverse Current @ PRV and 100°C , I_R | 250 μA |
| Max. Forward Voltage Drop @3.0Amp V_F | 1.4 Volts |
| Max. Reverse Recovery Time, T_{rr} (Fig.4) | 250 nanosec |
| Ambient Operating Temperature Range, T_A | -55°C to $+150^\circ\text{C}$ |
| Storage Temperature Range, T_{STG} | -55°C to $+150^\circ\text{C}$ |
| Max. One - Half Cycle Surge Current, $I_{FM}(\text{Surge}) @ 60\text{Hz}$ | 240 Amps |

EDI reserves the right to change these specifications at any time without notice.

FIG.1

OUTPUT CURRENT vs AMBIENT TEMPERATURE

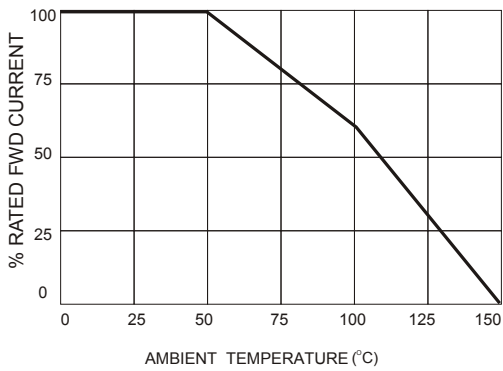


FIG.2

NON-REPETITIVE SURGE CURRENT

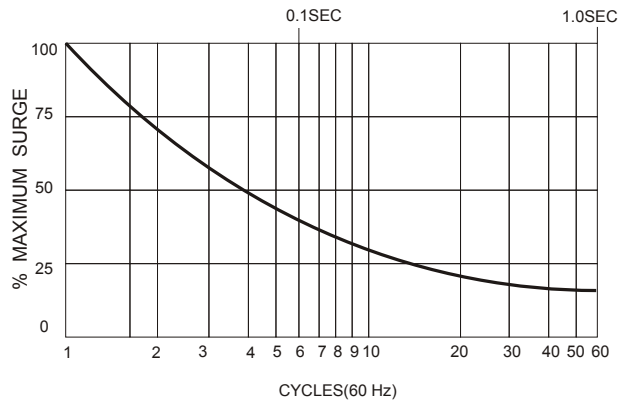
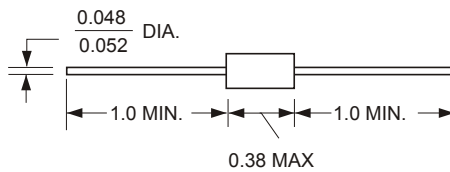


FIG.3



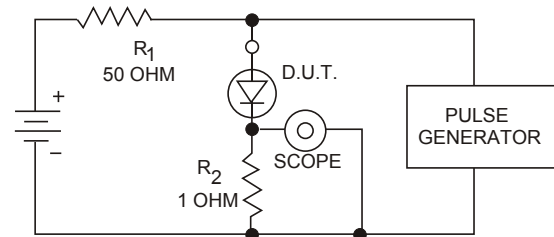
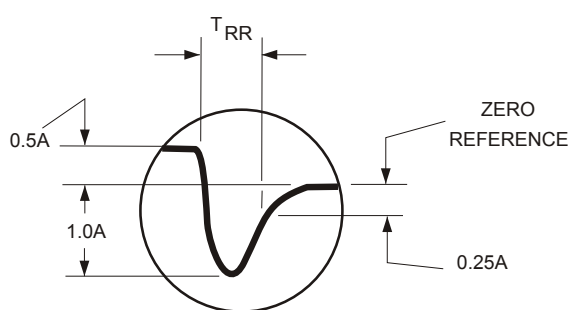
ALL DIMENSIONS IN INCHES

Maximum lead and terminal temperature for soldering, 3/8 inch form case, 5 seconds at 250 °C

TEST CIRCUIT

FIG.4

TYPICAL REVERSE RECOVERY WAVEFORM



R₁, R₂ NON-INDUCTIVE RESISTORS
 PULSE GENERATOR-HEWLETT PACKARD 214A OR EQUIV.
 I_K REP.RATE, 10 μ SEC. PULSE WIDTH
 ADJUST PULSE AMPLITUDE FOR PEAK I_R