



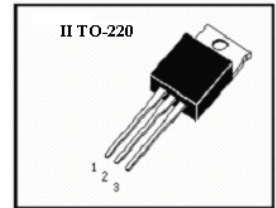
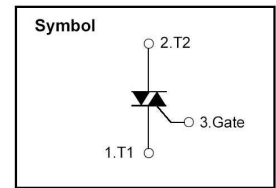
INNER INSULATED TYPE TRIAC (II TO-220 PACKAGE)

Features

- * Repetitive Peak Off-State Voltage: 600V
- * R.M.S On-state Current($I_{T(RMS)}=20A$)
- * High Commutation dv/dt

General Description

The Triac HBTA8A60 is suitable for AC switching application, phase control application such as heater control, motor control, lighting control, and static switching relay.



Absolute Maximum Ratings ($T_a=25$)

T_{stg} —Storage Temperature.....	-40~125
T_j —Operating Junction Temperature	-40~125
P_{GM} —Peak Gate Power Dissipation.....	5W
V_{DRM} —Repetitive Peak Off-State Voltage.....	600V
I_T (RMS) —R.M.S On-State Current ($T_c=66$)	20A
V_{GM} —Peak Gate Voltage.....	10V
I_{GM} —Peak Gate Current.....	2.0A
I_{TSM} —Surge On-State Current (One Cycle, 50/60Hz,Peak,Non-Repetitive).....	170/190A
V_{ISO} —RMS Isolation Breakdown Voltage.....	2500V

Electrical Characteristics ($T_a=25$)

Symbol	Items	Min.	Max.	Unit	Conditions
I_{DRM}	Repetitive Peak Off-State Current		2.0	mA	$V_D=V_{DRM}$, Single Phase,Half Wave, $T_J=125$
V_{TM}	Peak On-State Voltage		1.6	V	$I_T=12A$, Inst. Measurement
I_{+GT1}	Gate Trigger Current ()		30	mA	$V_D=6V$, $R_L=10$ ohm
I_{-GT1}	Gate Trigger Current ()		30	mA	$V_D=6V$, $R_L=10$ ohm
I_{-GT3}	Gate Trigger Current ()		30	mA	$V_D=6V$, $R_L=10$ ohm
V_{+GT1}	Gate Trigger Voltage ()		1.5	V	$V_D=6V$, $R_L=10$ ohm
V_{-GT1}	Gate Trigger Voltage ()		1.5	V	$V_D=6V$, $R_L=10$ ohm
V_{-GT3}	Gate Trigger Voltage ()		1.5	V	$V_D=6V$, $R_L=10$ ohm
V_{GD}	Non-Trigger Gate Voltage	0.2		V	$T_J=125$, $V_D=1/2V_{DRM}$
$(dv/dt)_c$	Critical Rate of Rise of Off-State Voltage at Commutation	10		$V/\mu S$	$T_J=125$, $V_D=2/3V_{DRM}$ $(di/dt)_c=-4.0A/ms$
$R_{th(j-c)}$	Thermal Resistance		2.5	$/W$	Junction to case
I_H	Holding Current		25	mA	



Performance Curves

Fig 1. Gate Characteristics

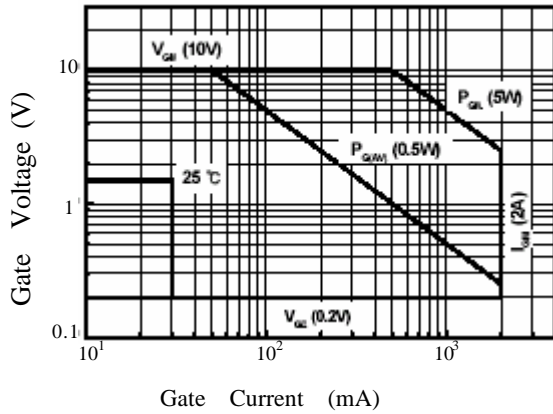


Fig 3. Gate Trigger Voltage vs. Junction Temperature

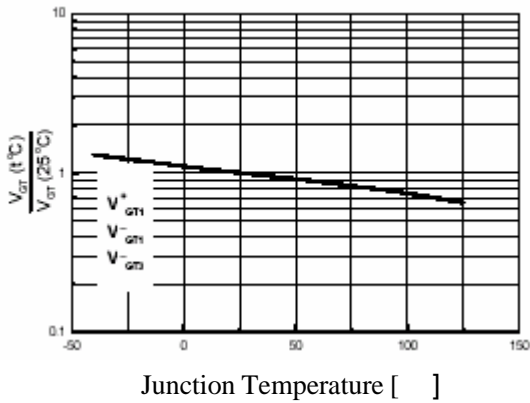


Fig 5. On State Current vs. Allowable Case Temperature

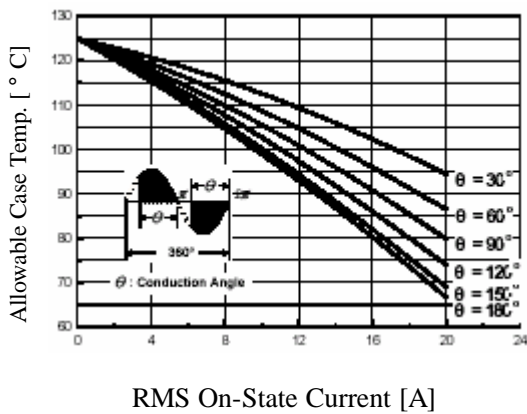


Fig 2. On-State Voltage

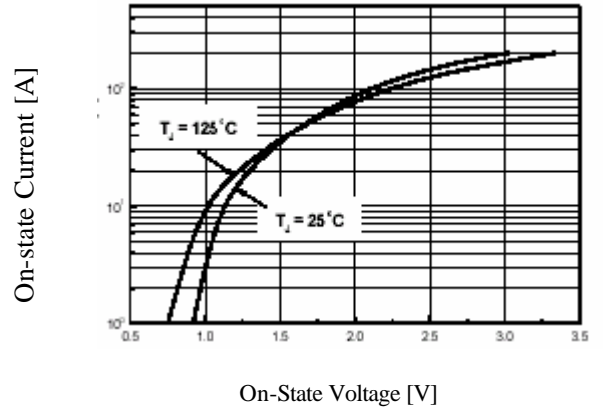


Fig 4. On State Current vs. Maximum Power Dissipation

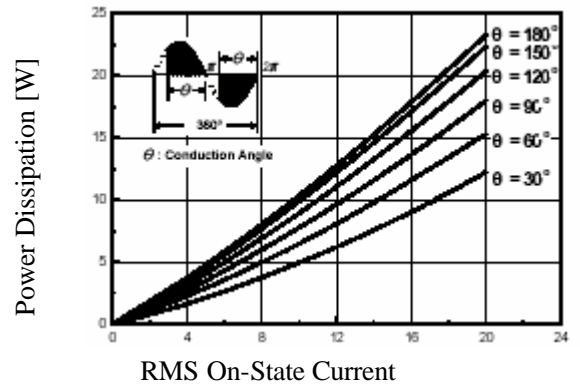


Fig 6. Surge On-State Current Rating (Non-Repetitive)

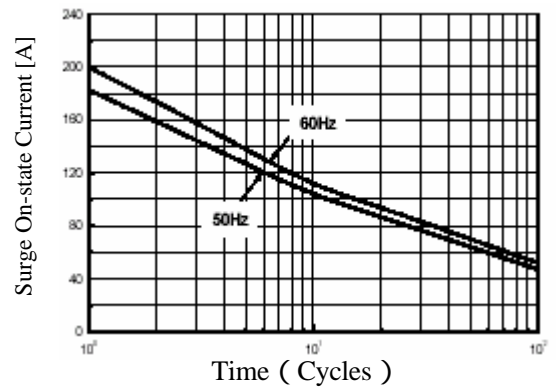




Fig 7. Gate Trigger Current vs. Junction Temperature

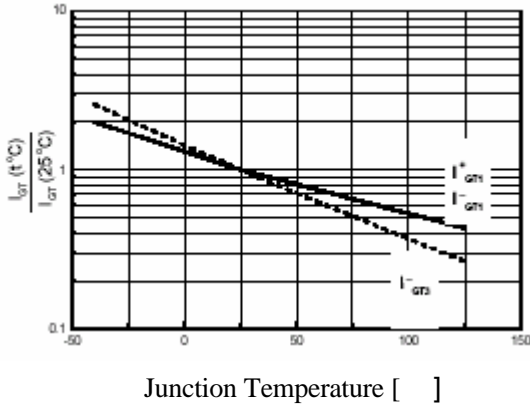


Fig 8. Transient Thermal Impedance

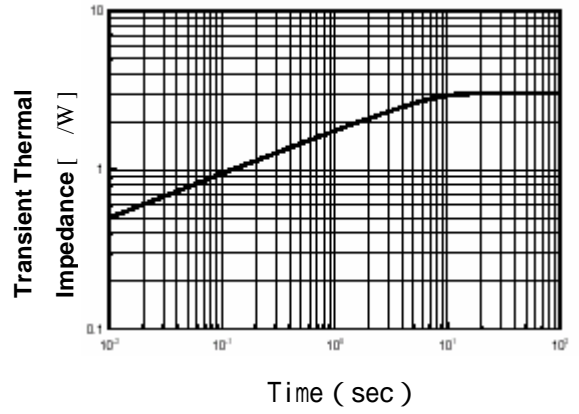
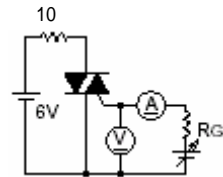
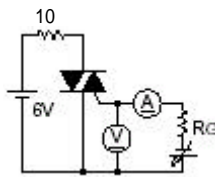


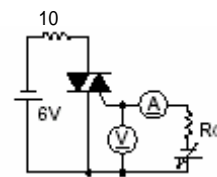
Fig 9. Gate Trigger Characteristics Test Circuit



Test Procedure



Test Procedure



Test Procedure