

HER301 – HER308

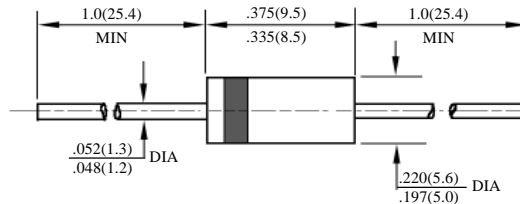
3A 高效二极管

3A HIGH EFFICIENCY DIODES

型号 TYPE	最大反向 峰值电压 Maximum Peak Reverse Voltage	最大平均正向电流 Maximum Average Rectified Current @ Half-Wave Resistive Load 60Hz		最大正向浪涌电流 Maximum Forward Peak Surge Current @ 8.3ms Superimposed	最大反向 漏电流 Maximum Reverse Current @ PRV @ T _A =25°C	最大正向电压 Maximum Forward Voltage @ T _A =25°C		最大反向 恢复时间 Maximum Reverse Recovery Time	外型尺寸 Package Dimensions
	PRV V _{PK}	I _O @ T _L A _{AV}	°C	I _{FM} (Surge) A _{PK}	I _R μA _{dc}	I _{FM} A _{PK}	V _{FM} V _{PK}	T _{rr} ns	
HER301	50	3.0		200	10	3.0	1.00	50	DO-201AD
HER302	100						1.00		
HER303	200						1.00		
HER304	300						1.30		
HER305	400						1.30		
HER306	600						1.85		
HER307	800			1.85	70				
HER308	1000			1.85					

T_{rr} 测试条件: I_F=0.5A, I_R=1.0A, I_{RR}=0.25A

T_{rr} Test Conditions: I_F=0.5A, I_R=1.0A, I_{RR}=0.25A



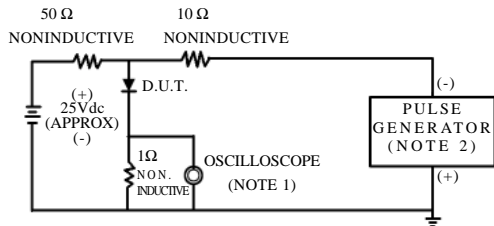
DO – 201AD

HER301 – HER308

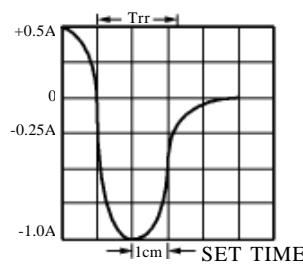
3A 高效率二极管额定值与特性曲线

3A RATING & CHARACTERISTIC CURVES OF HIGH EFFICIENCY DIODES

FIG.1-TEST CIRCUIT DIAGRAM AND REVERSE RECOVERY TIME CHARACTERISTIC



NOTES:1.Rise Time=7ns max.
Input Impedance=1megohm.22pF.
2.Rise Time=10ns max.
Source Impedance=50 ohms.



BASE FOR 10 ns/cm

FIG. 2 - TYPICAL FORWARD CURRENT DERATING CURVE

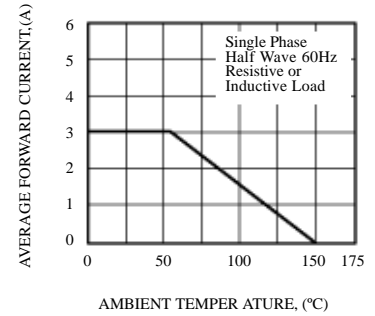


FIG. 3 - TYPICAL REVERSE CHARACTERISTICS

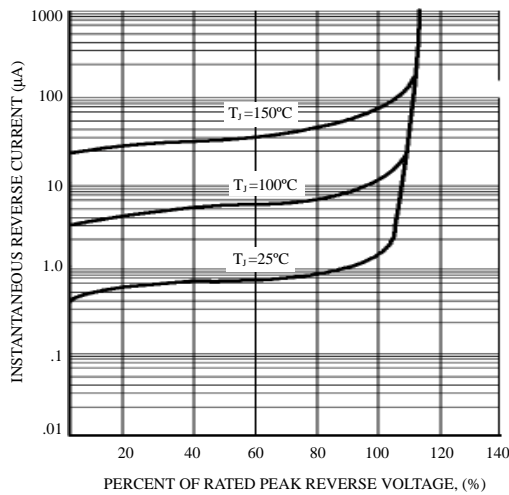


FIG. 4 - TYPICAL INSTANTANEOUS FORWARD CHARACTERISTICS

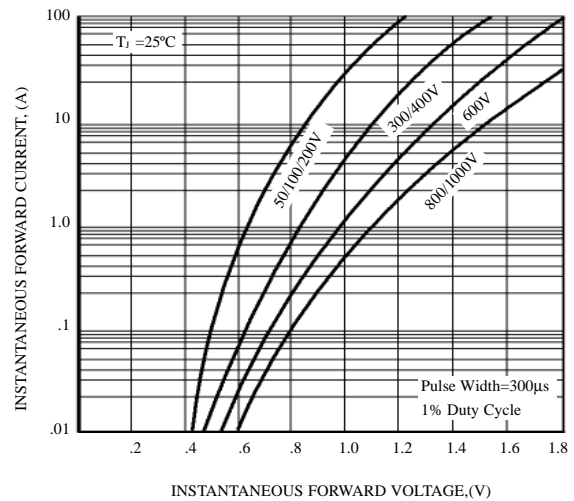


FIG. 5 - MAXIMUM NON-REPETITIVE FORWARD SURGE CURRENT

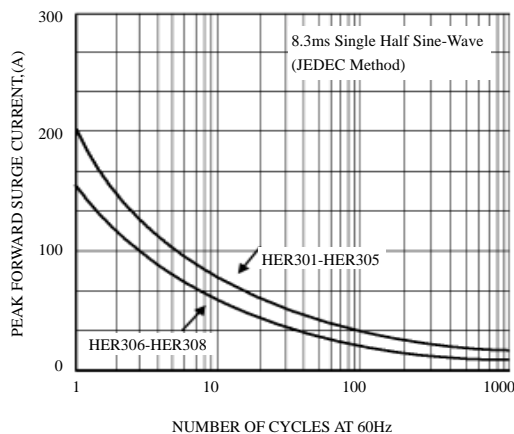


FIG. 6 - TYPICAL JUNCTION CAPACITANCE

