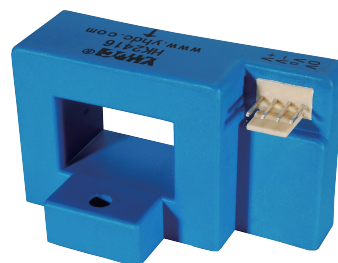


Model: HK2416

Open loop hall circuit, Sub-plate installation,
Detect DC, AC and pulse current.

Technical indicators:

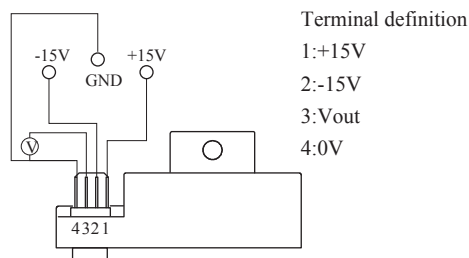
- Flame resistance: UL94-V0
- Working temperature: $-10^{\circ}\text{C} \sim +70^{\circ}\text{C}$
- Storage temperature: $-40^{\circ}\text{C} \sim +85^{\circ}\text{C}$
- Bandwidth: DC \sim 50KHz
- Dielectric strength: 2.5KV 50Hz 1min



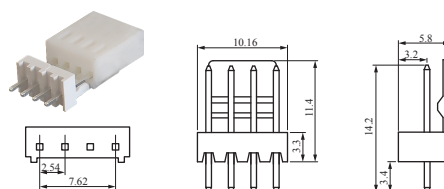
Technical indicators:

I_p	Rated input	± 100	A
I_{PM}	Input measured range	± 300	A
V_{OUT}	Rated output	± 4	V
X	Accuracy	1	%
ϵ_L	Linearity	< 1	%
V_C	Supply voltage($\pm 5\%$)	± 15	V
I_C	Current consumption	± 25	mA
R_L	Load impedance	> 10	K Ω
V_{OE}	Zero offset, $T_A=25^{\circ}\text{C}$	$\leq \pm 30$	mV
T_R	Response time	< 7	μs
N.W	Weight	76	g

Connection Diagram:

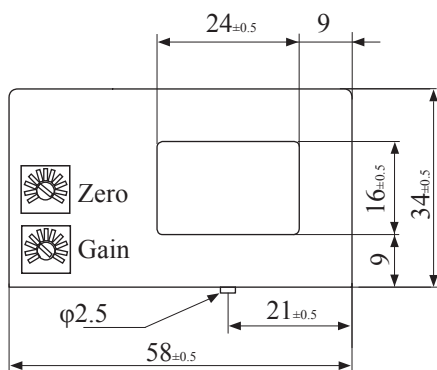


connector schematic diagram:

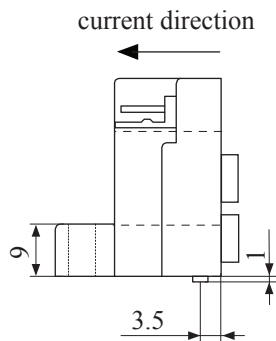


Cold-press terminal plug /socket, Distance 2.54, Stitch size 0.5 \times 0.5

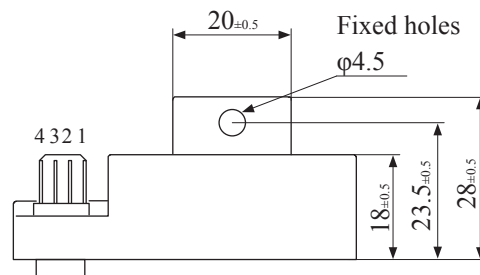
Dimensions (in mm) :



Front view



Side view



Top view