

**Feature**

- The chips are electrically insulated from bottom plate,2500V AC voltage
- Complete pressure connection structure,with excellent temperature Characteristics and power cycling capacity
- Forced air cooling for modules below 400A and air cooling or water Cooling for modules above 500A

$I_{F(AV)}$	350A
$V_{RRM}$	500-2500V
$I_{FSM}$	15 KA
$I^2t$	1150 $10^3a^2s$

**Typical application**

- DC power supplies of appliances and devices
- AC and DC motor control,Soft starting for motors
- Various rectifying power supply
- Electric welders,Frequency transformers,Battery charging and discharging

SYMBOL	CHARACTERISTIC	TEST CONDITIONS	$T_J$ (°C)	VALUE		UNIT
				Min	Max	
$I_{F(AV)}$	Mean forward current	180° half sine wave, 50HZ Single heat sink, $T_C=98^\circ C$	150		350	A
$I_{F(RMS)}$	RMS current		150		550	A
$V_{RRM}$	Repetitive peak reverse voltage	$V_{DRM} \& V_{RRM} t_p=10ms$ $V_{DSM} \& V_{RSM}=V_{DRM} \& V_{RRM}+200V$	150	500	2500	V
$I_{RRM}$	Repetitive peak current	$V_{RM}=0V_{RRM}$	150		30	mA
$I_{FSM}$	Surge on-state current	10ms half sine wave $V_R=0.6V_{RRM}$	150		15.0	KA
$I^2t$	$I^2t$ for fusing coordination				1150	$A^{2S} \cdot 10$
$V_{TO}$	Threshold voltage		150		0.75	V
$r_T$	On-state slop resistance				0.61	$m\Omega$
$V_{FM}$	Peak on-state voltage	$I_{TM}=1050A$	25		1.30	V
$R_{th(j-c)}$	Thermal impedance node to the shell	180 ° sine wave, single heat sink			0.11	°C/W
$R_{th(c-h)}$	Thermal impedance ( shell to powder)	180 ° sine wave, single heat sink			0.04	°C/W
$V_{iso}$	Insulation voltage			2500		V
$F_M$	Mounting force (M5)				12	N-m
	Mounting force (M6)				6	N-m
$T_{stq}$	Stored temperature			-40	125	°C
$W_t$	Weight					g
Outline						

Peak forward Voltage Vs. Peak forward Current

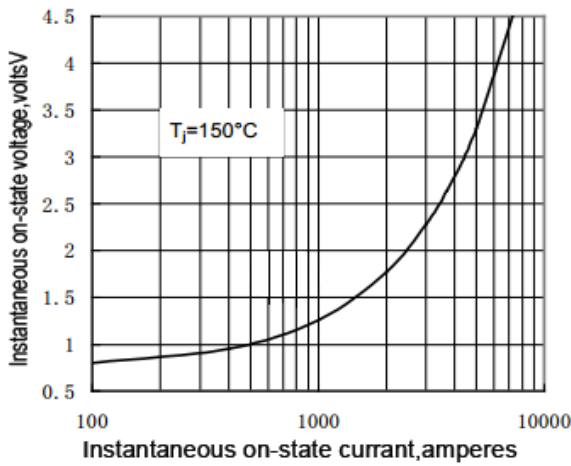


Fig.1

Max. junction To case Thermal Impedance Vs. Time

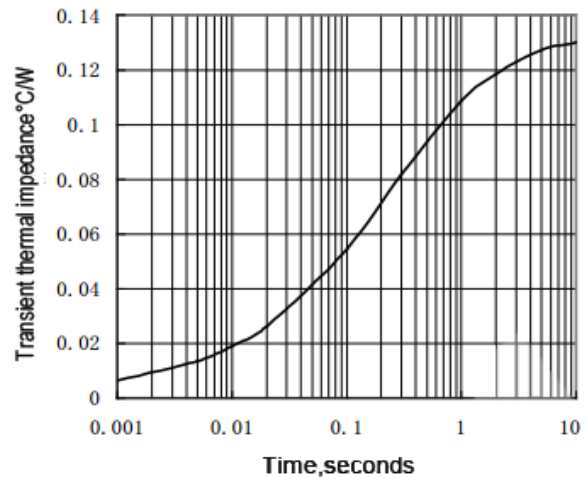


Fig.2

Peak forward Voltage Vs. Peak forward Current

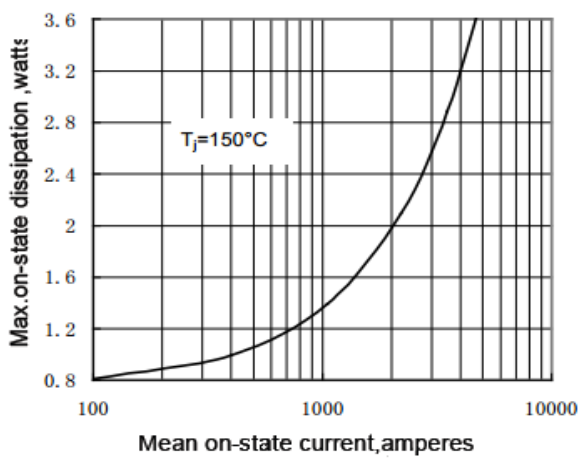


Fig.3

Max. junction To case Thermal Impedance Vs. Time

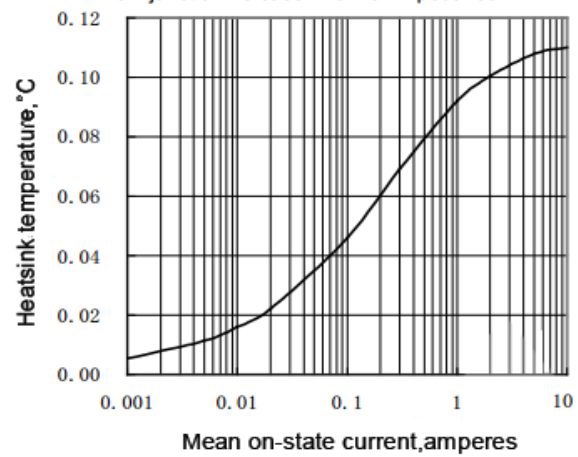


Fig.4

Max. Power Dissipation Vs. Mean On-state Current

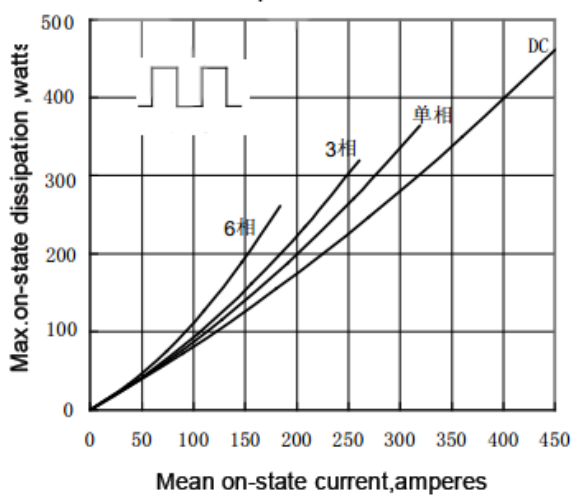


Fig.5

Max. case Temperature Vs. Mean forward Current

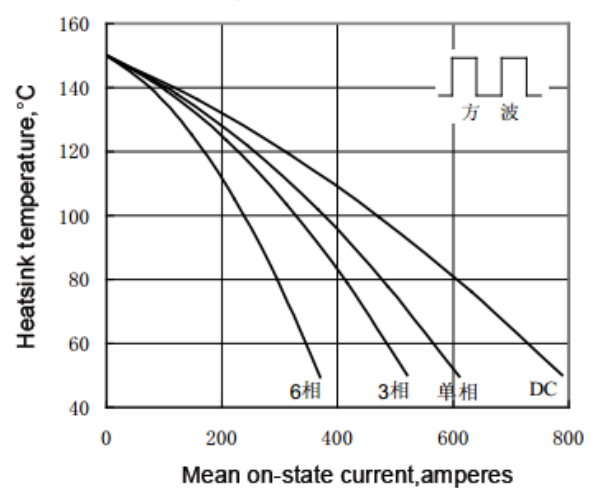


Fig.6

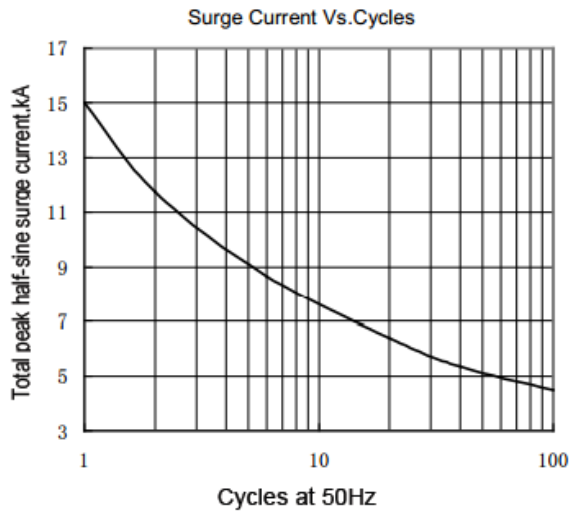


Fig.7

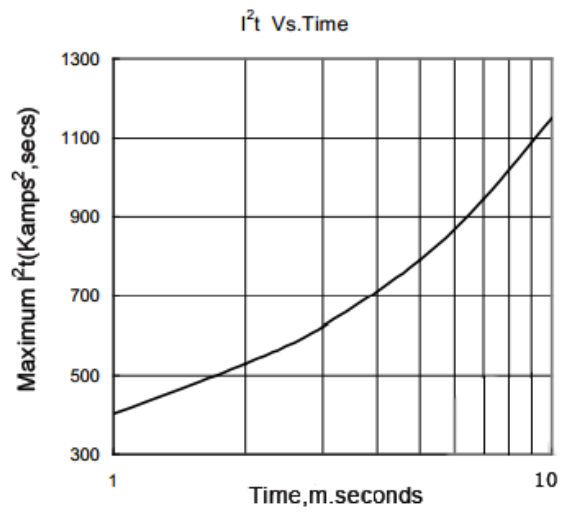
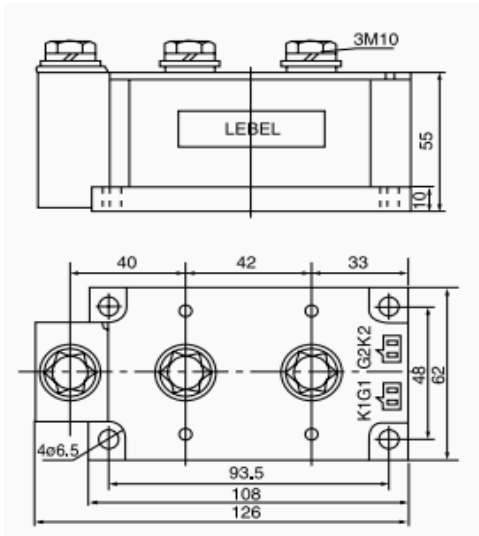
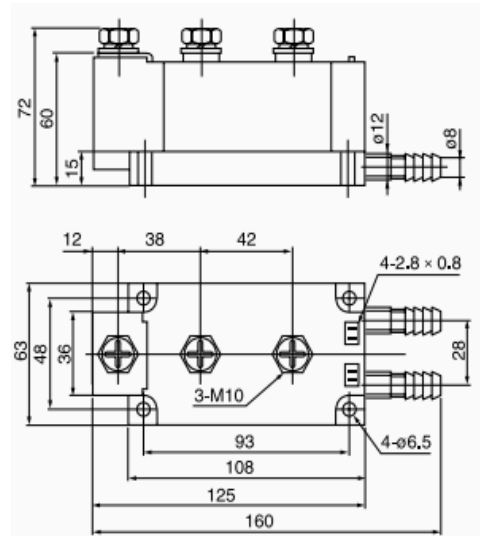


Fig.8

Outline:



1



2

Circuit Drawing:

