



HS3A THRU HS3M

3.0 AMPS. High Efficient Surface Mount Rectifiers



Voltage Range
50 to 1000 Volts
Current
3.0 Amperes

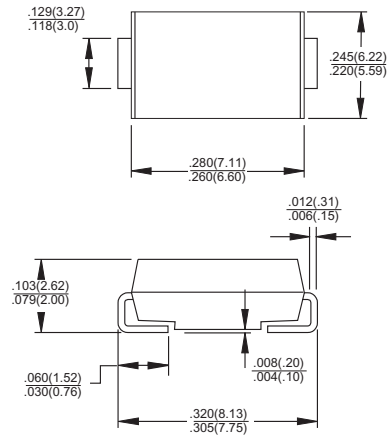
Features

- ✧ Glass passivated junction chip.
- ✧ For surface mounted application
- ✧ Low forward voltage drop
- ✧ Low profile package
- ✧ Built-in stain relief, ideal for automatic placement
- ✧ Fast switching for high efficiency
- ✧ High temperature soldering:
260°C/10 seconds at terminals
- ✧ Plastic material used carries Underwriters
Laboratory Classification 94V-O

Mechanical Data

- ✧ Cases: Molded plastic
- ✧ Terminals: Solder plated
- ✧ Polarity: Indicated by cathode band
- ✧ Packing: 16mm tape per E1A STD RS-481
- ✧ Weight: 0.21 gram

SMC/DO-214AB



Dimensions in inches and (millimeters)

Maximum Ratings and Electrical Characteristics

Rating at 25°C ambient temperature unless otherwise specified.

Single phase, half wave, 60 Hz, resistive or inductive load.

For capacitive load, derate current by 20%

Type Number	Symbol	HS 3A	HS 3B	HS 3D	HS 3F	HS 3G	HS 3J	HS 3K	HS 3M	Units	
Maximum Recurrent Peak Reverse Voltage	V_{RRM}	50	100	200	300	400	600	800	1000	V	
Maximum RMS Voltage	V_{RMS}	35	70	140	210	280	420	560	700	V	
Maximum DC Blocking Voltage	V_{DC}	50	100	200	300	400	600	800	1000	V	
Maximum Average Forward Rectified Current See Fig. 2	$I_{(AV)}$	3.0								A	
Peak Forward Surge Current, 8.3 ms Single Half Sine-wave Superimposed on Rated Load (JEDEC method)	I_{FSM}	150								A	
Maximum Instantaneous Forward Voltage @ 3.0A	V_F	1.0			1.3		1.7			V	
Maximum DC Reverse Current @ $T_A = 25^\circ\text{C}$ at Rated DC Blocking Voltage @ $T_A = 100^\circ\text{C}$	I_R	10.0 200								uA uA	
Maximum Reverse Recovery Time (Note 1)	T_{rr}	50				75					nS
Typical Junction Capacitance (Note 2)	C_j	80				50					pF
Operating Temperature Range	T_J	-55 to +150								°C	
Storage Temperature Range	T_{STG}	-55 to +150								°C	

Notes: 1. Reverse Recovery Test Conditions: $I_F = 0.5A$, $I_R = 1.0A$, $I_{RR} = 0.25A$

2. Measured at 1 MHz and Applied $V_R = 4.0$ Volts

3. Mounted on P.C.B. with 0.6" x 0.6" (16 x 16 mm) Copper Pad Areas.

RATINGS AND CHARACTERISTIC CURVES (HS3A THRU HS3M)

FIG.1- REVERSE RECOVERY TIME CHARACTERISTIC AND TEST CIRCUIT DIAGRAM

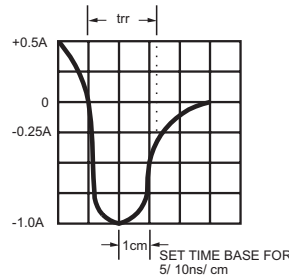
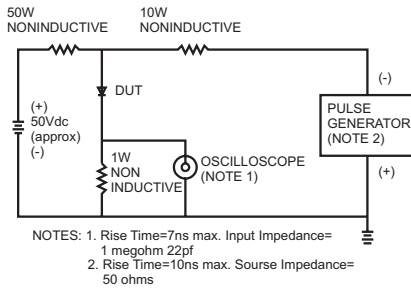


FIG.2- MAXIMUM FORWARD CURRENT DERATING CURVE

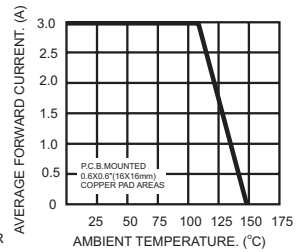


FIG.3- TYPICAL REVERSE CHARACTERISTICS

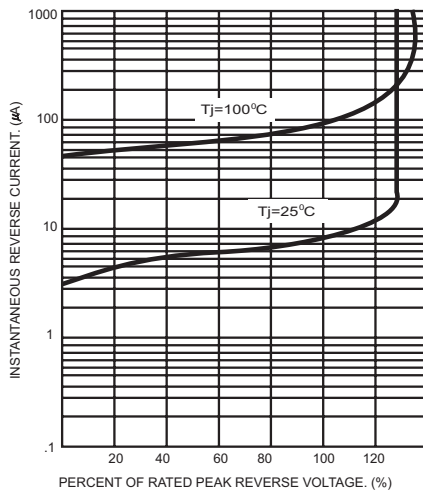


FIG.4- TYPICAL INSTANTANEOUS FORWARD CHARACTERISTICS

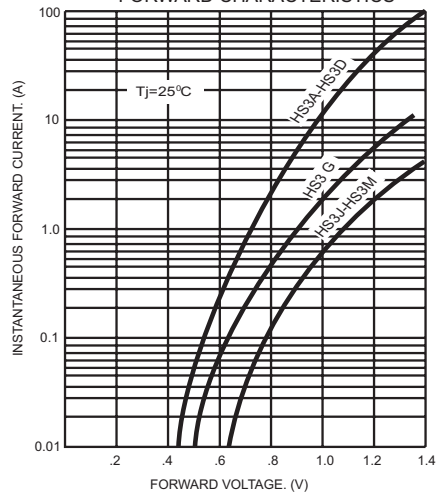


FIG.5- MAXIMUM NON-REPETITIVE FORWARD SURGE CURRENT

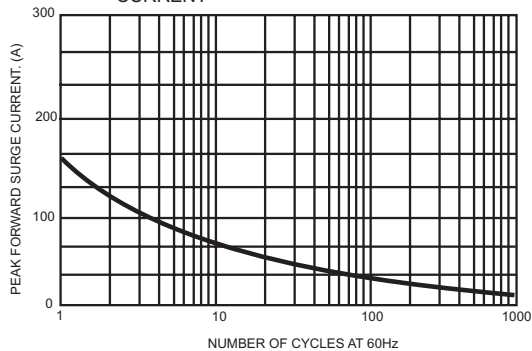


FIG.6- TYPICAL JUNCTION CAPACITANCE

