

# HS3AB - HS3MB

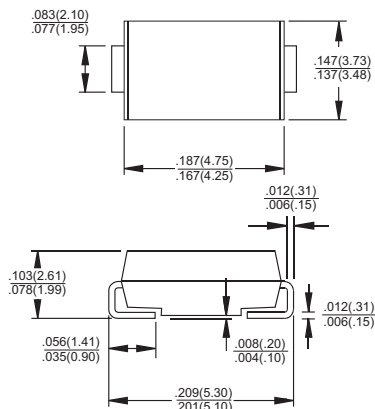
## 3.0 AMPS. High Efficient Surface Mount Rectifiers

### SMB/DO-214AA



## Features

- ✧ Glass passivated junction chip.
- ✧ For surface mounted application
- ✧ Low forward voltage drop
- ✧ Low profile package
- ✧ Built-in stain relief, ideal for automatic placement
- ✧ Fast switching for high efficiency
- ✧ High temperature soldering: 260°C/10 seconds at terminals
- ✧ Plastic material used carries Underwriters Laboratory Classification 94V0



## Mechanical Data

- ✧ Cases: Molded plastic
- ✧ Terminals: Pure tin plated, lead free
- ✧ Polarity: Indicated by cathode band
- ✧ Packing: 16mm tape per EIA STD RS-481
- ✧ Weight: 0.21 gram

Dimensions in inches and (millimeters)

## Maximum Ratings and Electrical Characteristics

Rating at 25 °C ambient temperature unless otherwise specified.

Single phase, half wave, 60 Hz, resistive or inductive load.

For capacitive load, derate current by 20%

Type Number	Symbol	HS 3AB	HS 3BB	HS 3DB	HS 3FB	HS 3GB	HS 3JB	HS 3KB	HS 3MB	Units	
Maximum Recurrent Peak Reverse Voltage	$V_{RRM}$	50	100	200	300	400	600	800	1000	V	
Maximum RMS Voltage	$V_{RMS}$	35	70	140	210	280	420	560	700	V	
Maximum DC Blocking Voltage	$V_{DC}$	50	100	200	300	400	600	800	1000	V	
Maximum Average Forward Rectified Current See Fig. 1	$I_{(AV)}$	3.0								A	
Peak Forward Surge Current, 8.3 ms Single Half Sine-wave Superimposed on Rated Load (JEDEC method )	$I_{FSM}$	150								A	
Maximum Instantaneous Forward Voltage @ 3.0A	$V_F$	1.0			1.3		1.7			V	
Maximum DC Reverse Current @ $T_A=25^\circ\text{C}$ at Rated DC Blocking Voltage @ $T_A=125^\circ\text{C}$	$I_R$	10				250				$\mu\text{A}$ $\mu\text{A}$	
Maximum Reverse Recovery Time ( Note 1 )	$T_{rr}$	50					75				nS
Typical Junction Capacitance ( Note 2 )	$C_j$	80					50				pF
Operating Temperature Range	$T_J$	-55 to +150								°C	
Storage Temperature Range	$T_{STG}$	-55 to +150								°C	

- Notes:
1. Reverse Recovery Test Conditions:  $I_F=0.5\text{A}$ ,  $I_R=1.0\text{A}$ ,  $I_{RR}=0.25\text{A}$
  2. Measured at 1 MHz and Applied  $V_R=4.0$  Volts.
  3. Measured on P.C.Board with 0.6" x 0.6" (16mm x 16mm) Copper Pad Area.

## RATINGS AND CHARACTERISTIC CURVES (HS3AB THRU HS3MB)

FIG.1- MAXIMUM FORWARD CURRENT DERATING CURVE

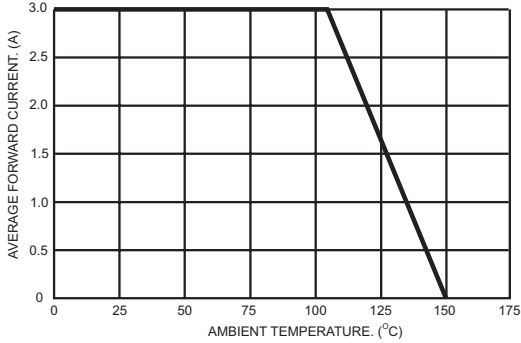


FIG.3- MAXIMUM NON-REPETITIVE FORWARD SURGE CURRENT

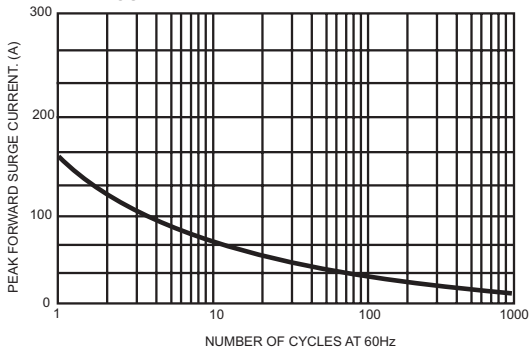


FIG.4- TYPICAL JUNCTION CAPACITANCE

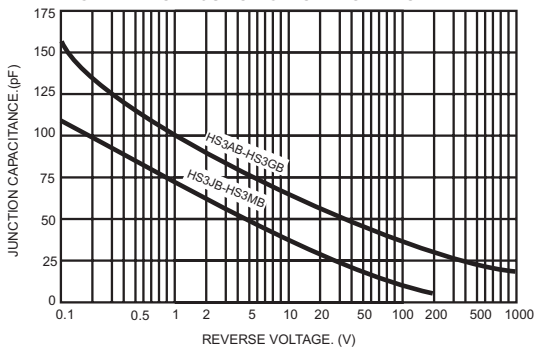


FIG.6- REVERSE RECOVERY TIME CHARACTERISTIC AND TEST CIRCUIT DIAGRAM

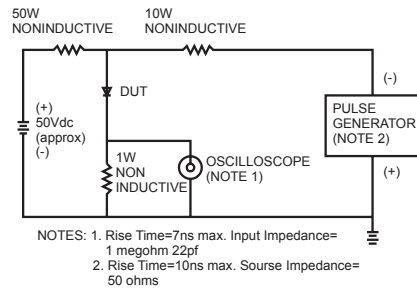


FIG.2- TYPICAL REVERSE CHARACTERISTICS

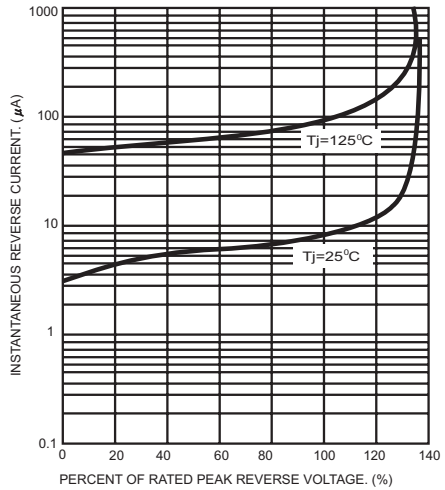


FIG.5- TYPICAL INSTANTANEOUS FORWARD CHARACTERISTICS

