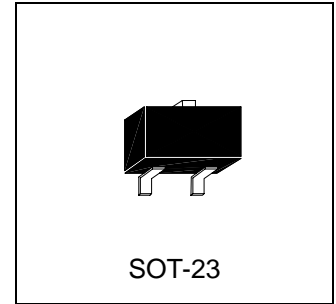




HUN2211 / HUN2212 / HUN2213 / HUN2214 / HUN2215
HUN2216 / HUN2230 / HUN2231 / HUN2232 / HUN2233
HUN2234 / HUN2235 / HUN2236 / HUN2237 / HUN2238
HUN2240 / HUN2241

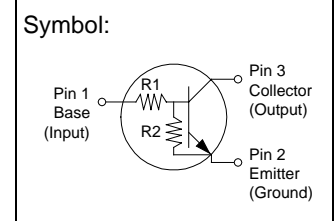
NPN Silicon Surface Mount Transistor with Monolithic Bias Resistor Network



SOT-23

Description

This new series of digital transistors is designed to replace a single device and its external resistor bias network. The BRT (Bias Resistor Transistor) contains a single transistor with a monolithic bias network consisting of two resistors; a series base resistor and a base-emitter resistor. The BRT eliminates these individual components by integrating them into a single device. The use of a BRT can reduce both system cost and board space. The device is housed in the SOT-23 package which is designed for low power surface Mount applications.



- Simplifies Circuit Design
- Reduces Board Space
- Reduces Component Count
- Moisture Sensitivity Level: 1
- ESD Rating: Human Body Model: Class1, Machine Model: Class B
- The SOT-23 package can be soldered using wave or reflow. (The modified gull-winged leads absorb thermal stress during soldering eliminating the possibility of damage to the die.)
- Available in 8mm embossed tape and reel. Use the device number to order the 7 inch / 3,000 unit reel.

Maximum Ratings (T_A=25°C unless otherwise noted)

Rating	Symbol	Value	Unit
Collector-Base Voltage	V _{CBO}	50	Vdc
Collector-Emitter Voltage	V _{CEO}	50	Vdc
Collector Current	I _C	100	mAdc
Total Power Dissipation @ T _A =25°C	P _D	200	mW
Derate above 25°C (Note1)		1.6	mW/°C

Note1: Device mounted on a FR-4 glass epoxy printed circuit board using the minimum recommended footprint.

Thermal Characteristics

Rating	Symbol	Value	Unit
Thermal Resistance-Junction-to-Ambient	R _{θJA}	625	°C/W
Operating and Storage Temperature Range	T _J , T _{stg}	-65 to +150	°C
Maximum Temperature for Soldering Purposes	T _L	260	°C
Time in Solder Bath		10	Sec



Device Marking and Resistor Values

Device	Package	Marking	R1(K)	R2(K)	Shipping
HUN2211	SOT-23	A8A	10	10	3000/Tape & Reel
HUN2212	SOT-23	A8B	22	22	3000/Tape & Reel
HUN2213	SOT-23	A8C	47	47	3000/Tape & Reel
HUN2214	SOT-23	A8D	10	47	3000/Tape & Reel
HUN2215	SOT-23	A8E	10	∞	3000/Tape & Reel
HUN2216	SOT-23	A8F	4.7	∞	3000/Tape & Reel
HUN2230	SOT-23	A8G	1	1	3000/Tape & Reel
HUN2231	SOT-23	A8H	2.2	2.2	3000/Tape & Reel
HUN2232	SOT-23	A8J	4.7	4.7	3000/Tape & Reel
HUN2233	SOT-23	A8K	4.7	47	3000/Tape & Reel
HUN2234	SOT-23	A8L	22	47	3000/Tape & Reel
HUN2235	SOT-23	A8M	2.2	47	3000/Tape & Reel
HUN2236	SOT-23	A8N	100	100	3000/Tape & Reel
HUN2237	SOT-23	A8P	47	22	3000/Tape & Reel
HUN2238	SOT-23	A8R	2.2	∞	3000/Tape & Reel
HUN2240	SOT-23	A8T	47	∞	3000/Tape & Reel
HUN2241	SOT-23	A8U	100	∞	3000/Tape & Reel

Electrical Characteristics (T_A=25°C unless otherwise noted)

Characteristic	Symbol	Min.	Typ.	Max.	Unit	
<i>Off Characteristics</i>						
Collector-Base Cutoff Current (V _{CB} =50V, I _E =0)	I _{CBO}	-	-	100	nAdc	
Collector-Emitter Cutoff Current (V _{CE} =50V, I _B =0)	I _{CEO}	-	-	500	nAdc	
Emitter-Base Cutoff Current (V _{EB} =6V, I _C =0)	I _{EBO}	HUN2211	-	-	0.5	mAdc
		HUN2212	-	-	0.2	
		HUN2213	-	-	0.1	
		HUN2214	-	-	0.2	
		HUN2215	-	-	0.9	
		HUN2216	-	-	1.9	
		HUN2230	-	-	4.3	
		HUN2231	-	-	2.3	
		HUN2232	-	-	1.5	
		HUN2233	-	-	0.18	
		HUN2234	-	-	0.13	
		HUN2235	-	-	0.2	
		HUN2236	-	-	0.05	
		HUN2237	-	-	0.13	
HUN2238	-	-	4			
HUN2240	-	-	0.2			
HUN2241	-	-	0.1			
Collector-Base Breakdown Voltage (I _C =10uA, I _E =0)	V _{(BR)CBO}	50	-	-	Vdc	
Collector-Emitter Breakdown Voltage (I _C =2mA, I _B =0)	*V _{(BR)CEO}	50	-	-	Vdc	

*Pulse Test: Pulse Width ≤300us, Duty Cycle ≤2%



Electrical Characteristics (T_A=25°C unless otherwise noted)

Characteristic	Symbol	Min.	Typ.	Max.	Unit
<i>*On Characteristics</i>					
DC Current Gain (V _{CE} =10V, I _C =5mA)	HUN2211	35	60	-	
	HUN2212	60	100	-	
	HUN2213	80	140	-	
	HUN2214	80	140	-	
	HUN2215	160	350	-	
	HUN2216	160	350	-	
	HUN2230	3	5	-	
	HUN2231	8	15	-	
	HUN2232	15	30	-	
	HUN2233	80	200	-	
	HUN2234	80	150	-	
	HUN2235	80	140	-	
	HUN2236	80	150	-	
	HUN2237	80	140	-	
	HUN2238	160	350	-	
HUN2240	160	350	-		
HUN2241	160	350	-		
Collector-Emitter Saturation Voltage (I _C =10mA, I _B =0.3mA) (I _C =10mA, I _B =5mA) HUN2230/HUN2231 (I _C =10mA, I _B =1mA) HUN2215/HUN2216/HUN2232/HUN2233 HUN2234/HUN2235/HUN2238	V _{CE(sat)}	-	-	0.25	Vdc

<i>*On Characteristics</i>						
Output Voltage (on) (V _{CC} =5V, V _B =2.5V, R _L =1kΩ)	HUN2211	-	-	0.2	Vdc	
	HUN2212	-	-	0.2		
	HUN2214	-	-	0.2		
	HUN2215	-	-	0.2		
	HUN2216	-	-	0.2		
	HUN2230	-	-	0.2		
	HUN2231	-	-	0.2		
	HUN2232	-	-	0.2		
	HUN2233	-	-	0.2		
	HUN2234	-	-	0.2		
	HUN2235	-	-	0.2		
	HUN2238	-	-	0.2		
	(V _{CC} =5V, V _B =3.5V, R _L =1kΩ)	HUN2213	-	-		0.2
		HUN2240	-	-		0.2
	(V _{CC} =5V, V _B =5.5V, R _L =1kΩ)	HUN2236	-	-		0.2
(V _{CC} =5V, V _B =4.0V, R _L =1kΩ)	HUN2237	-	-	0.2		
(V _{CC} =5V, V _B =5V, R _L =1kΩ)	HUN2241	-	-	0.2		

*Pulse Test: Pulse Width ≤300us, Duty Cycle≤2%



Electrical Characteristics (T_A=25°C unless otherwise noted)

Characteristic	Symbol	Min.	Typ.	Max.	Unit
<i>*On Characteristics</i>					
Output Voltage (off) (V _{CC} =5V, V _B =0.5V, R _L =1kΩ)	V _{OH}	4.9	-	-	Vdc
(V _{CC} =5V, V _B =0.25V, R _L =1kΩ)					
HUN2215					
HUN2216					
HUN2233					
(V _{CC} =5V, V _B =0.05V, R _L =1kΩ)	R ₁	kΩ	HUN2238		
HUN2240					
HUN2230					
HUN2211					
HUN2212					
HUN2213					
HUN2214					
HUN2215					
HUN2216					
HUN2230					
HUN2231					
HUN2232					
HUN2233					
HUN2234					
HUN2235					
HUN2236					
HUN2237					
HUN2238					
HUN2240					
HUN2241					
Resistor Ratio HUN2211/HUN2212/HUN2213 /HUN2236	R ₁ /R ₂		0.8	1	1.2
HUN2214			0.17	0.21	0.25
HUN2215/HUN2216/HUN2238/HUN2240			-	-	-
HUN2241			-	-	-
HUN2230/HUN2231/HUN2232			0.8	1	1.2
HUN2233			0.055	0.1	0.185
HUN2234			0.38	0.47	0.56
HUN2235			0.038	0.047	0.056
HUN2237			1.7	2.1	2.6

*Pulse Test: Pulse Width ≤300us, Duty Cycle ≤2%



SOT-23 Dimension

3-Lead SOT-23 Plastic
Surface Mounted Package
HSMC Package Code: N

Marking:

Series Code
(See Page 2)

Pb Free Mark
Pb-Free: "●" (Note)
Normal: None

Note: Pb-free product can distinguish by the green label or the extra description on the right side of the label.

Pin Style: 1.Base 2.Emitter 3.Collector

Material:

- Lead solder plating: Sn60/Pb40 (Normal), Sn/3.0Ag/0.5Cu or Pure-Tin (Pb-free)
- Mold Compound: Epoxy resin family, flammability solid burning class: UL94V-0

DIM	Min.	Max.
A	2.80	3.04
B	1.20	1.60
C	0.89	1.30
D	0.30	0.50
G	1.70	2.30
H	0.013	0.10
J	0.085	0.177
K	0.32	0.67
L	0.85	1.15
S	2.10	2.75
V	0.25	0.65

*: Typical, Unit: mm

Important Notice:

- All rights are reserved. Reproduction in whole or in part is prohibited without the prior written approval of HSMC.
- HSMC reserves the right to make changes to its products without notice.
- **HSMC semiconductor products are not warranted to be suitable for use in Life-Support Applications, or systems.**
- HSMC assumes no liability for any consequence of customer product design, infringement of patents, or application assistance.

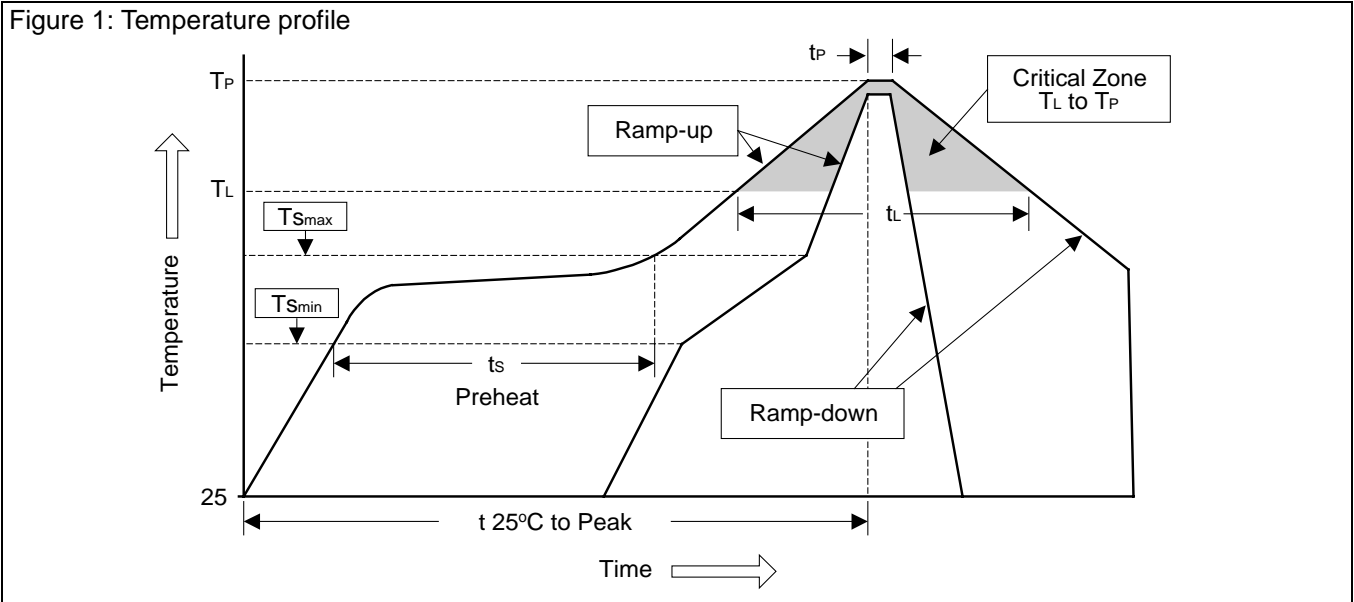
Head Office And Factory:

- **Head Office** (Hi-Sincerity Microelectronics Corp.): 10F., No. 61, Sec. 2, Chung-Shan N. Rd. Taipei Taiwan R.O.C.
Tel: 886-2-25212056 Fax: 886-2-25632712, 25368454
- **Factory 1:** No. 38, Kuang Fu S. Rd., Fu-Kou Hsin-Chu Industrial Park Hsin-Chu Taiwan. R.O.C
Tel: 886-3-5983621~5 Fax: 886-3-5982931



Soldering Methods for HSMC's Products

1. Storage environment: Temperature=10°C~35°C Humidity=65%±15%
2. Reflow soldering of surface-mount devices



Profile Feature	Sn-Pb Eutectic Assembly	Pb-Free Assembly
Average ramp-up rate (T_L to T_P)	<3°C/sec	<3°C/sec
Preheat		
- Temperature Min (T_{Smin})	100°C	150°C
- Temperature Max (T_{Smax})	150°C	200°C
- Time (min to max) (t_s)	60~120 sec	60~180 sec
T_{Smax} to T_L		
- Ramp-up Rate	<3°C/sec	<3°C/sec
Time maintained above:		
- Temperature (T_L)	183°C	217°C
- Time (t_L)	60~150 sec	60~150 sec
Peak Temperature (T_P)	240°C +0/-5°C	260°C +0/-5°C
Time within 5°C of actual Peak Temperature (t_P)	10~30 sec	20~40 sec
Ramp-down Rate	<6°C/sec	<6°C/sec
Time 25°C to Peak Temperature	<6 minutes	<8 minutes

3. Flow (wave) soldering (solder dipping)

Products	Peak temperature	Dipping time
Pb devices.	245°C ±5°C	5sec ±1sec
Pb-Free devices.	260°C +0/-5°C	5sec ±1sec