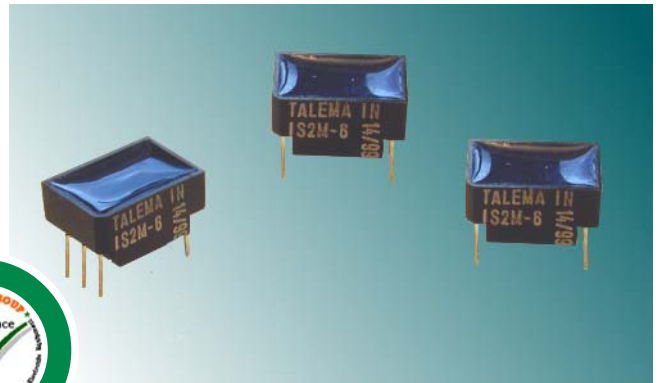




E1/T1/ PRI/CEPT Single Transformers

Features

- industry standard through-hole footprints
- wide range compatible with all common transceiver IC's
- controlled parameters ensure full compliance with ITU-T G.703 when matched with recommended IC
- ideal for all 1.544 and 2.048 Mbs interface applications
- manufactured in an ISO-9001:2000, TS-16949:2002 and ISO-14001:2004 certified Talema facility
- 1500Vrms minimum isolation voltage
- extended operating temperature: -40° to +85°C
- fully RoHS compliant



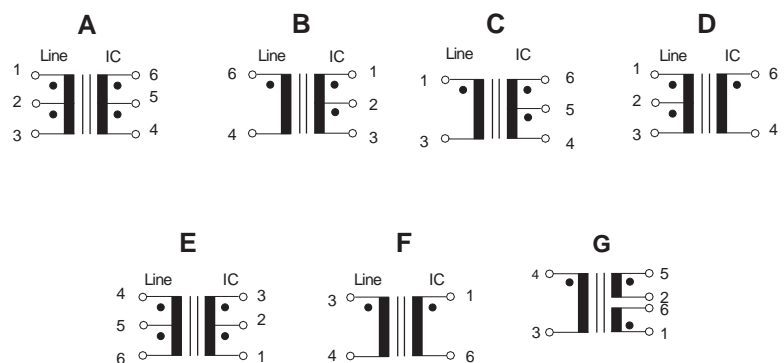
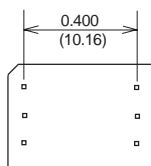
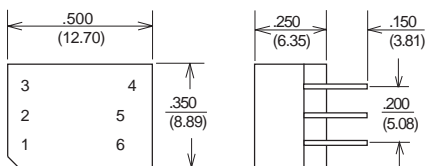
Electrical Specifications @ 25°C

Turns Ratio: **Bold** = IC side windings

| IS2M Series Transformers | | | | | | | | |
|--------------------------|-------------------|---------------|--------------------------|----------------|----------------|-----------------------|--------------|-----------|
| Part Number | Turns Ratio ±5% | OCL (mH Min.) | L _L (µH Max.) | DCR Pri (Ohms) | DCR Sec (Ohms) | V _p (Vrms) | Primary Pins | Schematic |
| IS2M-6 | 1ct: 2ct | 1.2 | 0.5 | 0.7 | 1.2 | 1500 | 1-3 | A |
| IS2M-7 | 1:2ct | 1.2 | 0.5 | 0.7 | 1.2 | 1500 | 6-4 | B |
| IS2M-8 | 1: 1.15ct | 1.5 | 0.6 | 0.7 | 0.9 | 1500 | 6-4 | B |
| IS2M-10 | 1: 1.36ct | 1.2 | 0.8 | 0.5 | 0.8 | 1500 | 1-3 | C |
| IS2M-11 | 1: 2.3ct | 1.2 | 0.8 | 0.7 | 1.4 | 1500 | 1-3 | C |
| IS2M-12 | 1: 1/1.26 | 1.5 | 0.5 | 0.7 | 0.9 | 1500 | 6-4 | B |
| IS2M-15 | 1ct: 1 | 1.2 | 0.5 | 0.7 | 0.7 | 1500 | 1-3 | D |
| IS2M-16 | 1: 1.5ct | 1.2 | 0.6 | 0.7 | 1.0 | 1500 | 6-4 | B |
| IS2M-17 | 1: 1.53 | 1.2 | 0.8 | 0.5 | 1.0 | 1500 | 3-4 | F |
| IS2M-18 | 1: 1.185 | 1.2 | 0.5 | 0.7 | 0.8 | 1500 | 3-4 | F |
| IS2M-19 | 1ct: 2ct | 1.2 | 1.0 | 1.0 | 2.0 | 1500 | 6-4 | E |
| IS2M-20 | 1ct: 1ct | 1.2 | 1.0 | 1.0 | 1.0 | 1500 | 1-3 | A |
| IS2M-21 | 1: 1.15ct | 1.5 | 1.0 | 1.0 | 1.0 | 1500 | 6-4 | B |
| IS2M-23 | 1: 1.14ct | 1.2 | 1.0 | 0.7 | 0.8 | 1500 | 1-3 | C |
| IS2M-24 | 1: 1 | 1.2 | 0.5 | 0.7 | 0.7 | 1500 | 1-6 | F |
| IS2M-25 | 1: 1.36 | 1.2 | 0.8 | 0.7 | 0.9 | 1500 | 3-4 | F |
| IS2M-26 | 1ct: 3ct | 1.2 | 0.8 | 0.7 | 2.1 | 1500 | 1-3 | A |
| IS2M-27 | 1: 1.583ct | 1.2 | 0.6 | 0.7 | 1.0 | 1500 | 6-4 | B |

IS2M Series

Schematic



Note: Unused pins not provided

Dimensions: Inches (Millimeters)

Tolerance: ±0.010 (0.25) unless specified otherwise