



IS31AP2110

20W STEREO CLASS-D AUDIO AMPLIFIER WITH POWER LIMIT AND DYNAMIC TEMPERATURE CONTROL

September 2014

GENERAL DESCRIPTION

The IS31AP2110 is a high efficiency stereo Class-D audio amplifier with adjustable power limit function and dynamic temperature control. The loudspeaker driver operates from 8~26V supply voltage and analog circuit operates at 3.3V supply voltage. It can deliver 20W/CH output power into 8Ω loudspeaker within 0.2% THD+N and without external heat sink when playing music.

IS31AP2110 provides parallel BTL (Mono) application, and it can deliver 40W into 4Ω loudspeaker within 0.11% THD+N. The adjustable power limit function allows user to set a voltage rail lower than half of 3.3V to limit the amount of current through the speaker.

Output DC detection prevents speaker damage from long-time current stress. The dynamic temperature control is a gain control system. As chip junction temperature higher than a warning level, the gain level will decrease until junction temperature lower than the warning level.

The output short circuit and over temperature protection include auto-recovery feature.

The IS31AP2110 is available in a thermally enhanced eTSSOP-28 package.

FEATURES

- Single supply voltage
 - 8V ~ 26V for loudspeaker driver
 - Built-in LDO output 3.3V for others
- Loudspeaker power from 24V supply
 - BTL Mode: 20W/CH into 8Ω @0.2% THD+N
 - PBTL Mode: 40W/CH into 4Ω @0.11% THD+N
- Loudspeaker power from 13V supply
 - BTL Mode: 10W/CH into 8Ω @10% THD+N
- 87% efficient Class-D operation eliminates need for heat sink
- Differential inputs
- Four selectable, fixed gain settings
- Internal oscillator
- Short-Circuit protection with auto recovery option
- Under-voltage detection
- Over-voltage protection
- Pop noise and click noise reduction
- Adjustable power limit function for speaker protection
- Output DC detection for speaker protection
- Filter-Free operation
- Over temperature protection with auto recovery
- Dynamic temperature control prevents chip from over heating

APPLICATIONS

- TV audio
- Bluetooth speaker system
- Docking speaker system
- Consumer audio equipment

IS31AP2110

TYPICAL APPLICATION CIRCUIT

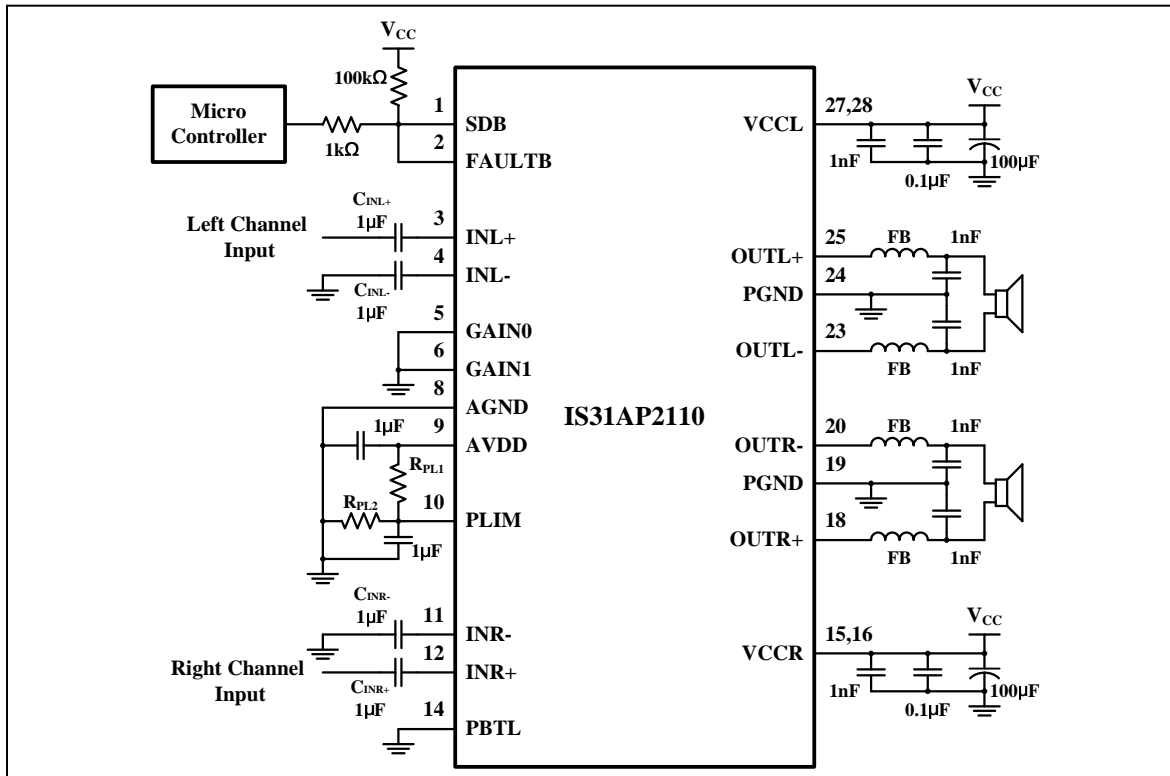


Figure 1 Typical Application Circuit (for BTL Stereo, Single-ended Input)

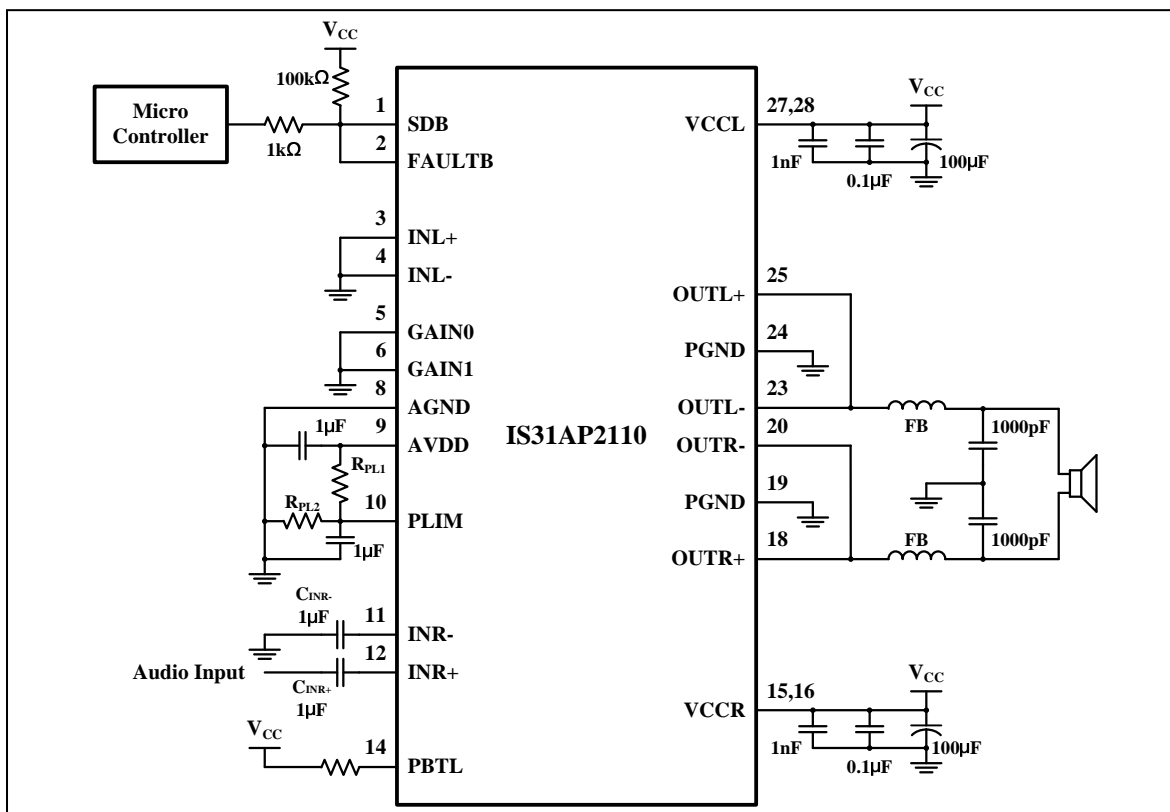
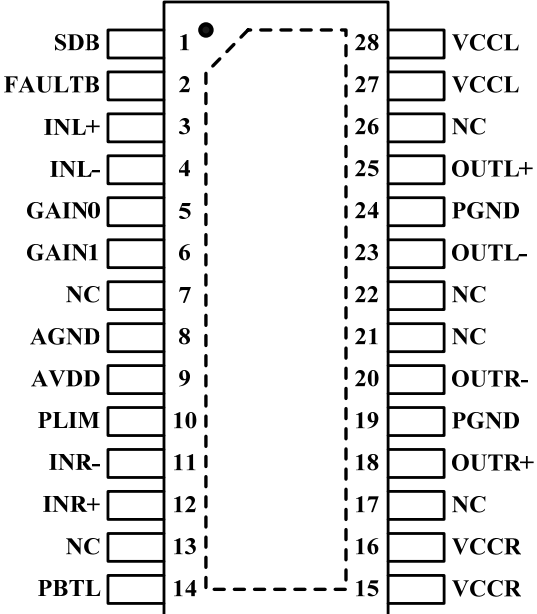


Figure 2 Typical Application Circuit (for Parallel BTL Mono, Single-ended Input)

IS31AP2110

PIN CONFIGURATION

| Package | Pin Configuration (Top View) |
|-----------|---|
| eTSSOP-28 |  <p>The diagram shows a top view of the eTSSOP-28 package with 28 pins. Pin 1 is the top-left corner and contains a dot. The pins are numbered 1 through 28. The functions for each pin are listed as follows:</p> <ul style="list-style-type: none"> Pin 1: SDB Pin 2: FAULTB Pin 3: INL+ Pin 4: INL- Pin 5: GAIN0 Pin 6: GAIN1 Pin 7: NC Pin 8: AGND Pin 9: AVDD Pin 10: PLIM Pin 11: INR- Pin 12: INR+ Pin 13: NC Pin 14: PBTL Pin 15: VCCR Pin 16: VCCR Pin 17: NC Pin 18: OUTR+ Pin 19: PGND Pin 20: OUTR- Pin 21: NC Pin 22: NC Pin 23: OUTL- Pin 24: PGND Pin 25: OUTL+ Pin 26: NC Pin 27: VCCL Pin 28: VCCL |

IS31AP2110

PIN DESCRIPTION

| No. | Pin | Description |
|----------------------|-------------|--|
| 1 | SDB | Shutdown signal for IC (Low = disabled, output Hi-Z; High = operational). Voltage compliance to 26V. |
| 2 | FAULTB | Open drain output used to display short circuit or dc detect fault. Voltage compliant to 26V. Short circuit faults can be set to auto-recovery by connecting FAULTB pin to SDB pin. Otherwise, both short circuit faults and dc detect faults must be reset by cycling V _{CC} . |
| 3 | INL+ | Positive audio input for left channel. Biased at 1.65V. |
| 4 | INL- | Negative audio input for left channel. Biased at 1.65V. |
| 5 | GAIN0 | Gain select least significant bit. Voltage compliance to 26V. |
| 6 | GAIN1 | Gain select most significant bit. Voltage compliance to 26V. |
| 7,13,17, 21,22,26 | NC | Not connected. |
| 8 | AGND | Analog signal ground. Connect to the thermal pad. |
| 9 | AVDD | 3.3V regulated output. |
| 10 | PLIM | Power limit level adjustment. Connect a resistor divider from AVDD to GND to set power limit. Give V _{PLIMIT} <1.55V to set power limit level. Connect to both of AVDD (>1.55V) and GND are all without power limit feature. |
| 11 | INR- | Negative audio input for right channel. Biased at 1.65V. |
| 12 | INR+ | Positive audio input for right channel. Biased at 1.65V. |
| 14 | PBTL | Parallel BTL mode switch, high for parallel BTL output. Voltage compliance to 26V. |
| 15, 16 | VCCR | High-voltage power supply for right-channel. Right channel and left channel power supply inputs are connect internal. |
| 18 | OUTR+ | Class-D H-bridge positive output for right channel. |
| 19 | PGND | Power ground for the H-bridges. |
| 20 | OUTR- | Class-D H-bridge negative output for right channel. |
| 23 | OUTL- | Class-D H-bridge negative output for left channel. |
| 24 | PGND | Power ground for the H-bridges. |
| 25 | OUTL+ | Class-D H-bridge positive output for left channel. |
| 27, 28 | VCCL | High-voltage power supply for left-channel. Right channel and left channel power supply inputs are connect internal. |
| | Thermal Pad | Connect to GND. |



IS31AP2110

ORDERING INFORMATION INDUSTRIAL RANGE: -40°C TO +85°C

| Order Part No. | Package | QTY |
|--------------------|----------------------|-----------|
| IS31AP2110-ZLS2-TR | eTSSOP-28, Lead-free | 2500/Reel |
| IS31AP2110-ZLS2 | | 50/Tube |

Copyright © 2014 Integrated Silicon Solution, Inc. All rights reserved. ISSI reserves the right to make changes to this specification and its products at any time without notice. ISSI assumes no liability arising out of the application or use of any information, products or services described herein. Customers are advised to obtain the latest version of this device specification before relying on any published information and before placing orders for products.

Integrated Silicon Solution, Inc. does not recommend the use of any of its products in life support applications where the failure or malfunction of the product can reasonably be expected to cause failure of the life support system or to significantly affect its safety or effectiveness. Products are not authorized for use in such applications unless Integrated Silicon Solution, Inc. receives written assurance to its satisfaction, that:

- a.) the risk of injury or damage has been minimized;
- b.) the user assume all such risks; and
- c.) potential liability of Integrated Silicon Solution, Inc is adequately protected under the circumstances

IS31AP2110

ABSOLUTE MAXIMUM RATINGS

| | |
|--|--|
| Supply voltage (VCCR, VCCL), V_{CC} | -0.3V ~ +30V |
| Interface pin voltage, (SDB, GAIN0, GAIN1, PBTL, FAULTB) (PLIM, INL+, INL-, INR+, INR-) | -0.3V ~ +26V -0.3V ~ +3.6V |
| Minimum load resistance, R_L , (BTL: $V_{CC} > 15V$) (BTL: $V_{CC} \leq 15V$) PBTL | 4.8 Ω 3.2 Ω 3.2 Ω |
| Thermal resistance, θ_{JA} | 28°C/W |
| Maximum junction temperature, T_{JMAX} | 150°C |
| Storage temperature range, T_{STG} | -65°C ~ +150°C |
| Operating temperature range, T_A | -40°C ~ +85°C |
| ESD (HBM) | 2kV |
| ESD (CDM) | 500V |

Note:

Stresses beyond those listed under "Absolute Maximum Ratings" may cause permanent damage to the device. These are stress ratings only and functional operation of the device at these or any other condition beyond those indicated in the operational sections of the specifications is not implied. Exposure to absolute maximum rating conditions for extended periods may affect device reliability.

DC ELECTRICAL CHARACTERISTICS

$V_{CC}=24V$, $T_A=25^\circ C$, $R_L=8\Omega$ (unless otherwise noted).

| Symbol | Parameter | Condition | Min. | Typ. | Max. | Unit |
|--------------|---|---|------|------|------|------------|
| V_{CC} | Supply voltage to VCCL, VCCR | | 8 | | 26 | V |
| I_{CC} | Quiescent current | $V_{SDB} = 2V$, no load | | 32 | 50 | mA |
| | | $V_{SDB} = 2V$, no load, $V_{CC} = 12V$ | | 20 | 35 | |
| I_{SD} | Shutdown current | $V_{SDB} = 0.8V$, no load | | <10 | 25 | μA |
| | | $V_{SDB} = 0.8V$, no load, $V_{CC} = 12V$ | | <10 | 25 | |
| $R_{DS(ON)}$ | Drain-source on-state resistance-High side PMOS | $V_{CC}=12V$, $I_d=500mA$, $T_J=25^\circ C$ | | 300 | | m Ω |
| | Drain-source on-state resistance-Low side NMOS | | | 200 | | |
| V_{OS} | Class-D output offset voltage (measured differentially) | $V_I = 0$, Gain= 36dB | | 10 | | mV |
| G | Gain | Gain1= 0.8V, Gain0=0.8V | 18 | 20 | 22 | dB |
| | | Gain1= 0.8V, Gain0= 2V | 24 | 26 | 28 | |
| | | Gain1= 2V, Gain0= 0.8V | 30 | 32 | 34 | |
| | | Gain1= 2V, Gain0= 2V | 34 | 36 | 38 | |
| t_{ON} | Turn-on time | $V_{SDB} = 2V$ | | 51 | | ms |
| t_{OFF} | Turn-off time | $V_{SDB} = 0.8V$ | | 4 | | μs |
| AV_{DD} | Internal regulated output | $I_{AVDD} = 0.1mA$ | 3.0 | 3.3 | 3.6 | V |

Logic Electrical Characteristics

| | | | | | | |
|----------|--------------------------|---|---|--|-----|---------|
| V_{IH} | High level input voltage | SDB, GAIN0, GAIN1, PBTL | 2 | | | V |
| V_{IL} | Low level input voltage | SDB, GAIN0, GAIN1, PBTL | | | 0.8 | V |
| V_{OL} | Low level output voltage | FAULTB, $R_{PU}=100k\Omega$, $V_{CC}=26V$ | | | 0.8 | V |
| I_{IH} | High level input current | SDB, GAIN0, GAIN1, PBTL, $V_I=2V$, $V_{CC}=18V$ | | | 50 | μA |
| I_{IL} | Low level input current | SDB, GAIN0, GAIN1, PBTL, $V_I=0.8V$, $V_{CC}=18V$ | | | 5 | μA |

IS31AP2110

AC ELECTRICAL CHARACTERISTICS

$V_{CC}=24V$, $T_A=25^{\circ}C$, $R_L=8\Omega$ (unless otherwise noted).

| Symbol | Parameter | Condition | Min. | Typ. | Max. | Unit |
|--------------|-----------------------------------|---|------|------|------|-------------|
| P_O | Output power | THD+N = 10%, f = 1kHz, $V_{CC} = 13V$ | | 10 | | W |
| | | THD+N = 10%, f = 1kHz, $V_{CC} = 16V$ | | 15 | | |
| THD+N | Total harmonic distortion + noise | $V_{CC}=24V$, $R_L=8\Omega$, f=1kHz, $P_O=15W$ (half-power) | | 0.1 | | % |
| | | $V_{CC}=12V$, $R_L=8\Omega$, f=1kHz, $P_O=5W$ (half-power) | | 0.11 | | |
| V_N | Output integrated noise | 20Hz to 22kHz, A-weighted filter, Gain = 20dB, $R_L=8\Omega$ | | 130 | | μV |
| SNR | Signal-to-noise ratio | Maximum output at THD+N < 1%, f = 1kHz, Gain = 20dB, A-weighted | | 102 | | dB |
| PSRR | Power supply ripple rejection | 200mV _{P-P} ripple at 1kHz, Gain = 20dB, Inputs ac-coupled to AGND | | -62 | | dB |
| X_{TALK} | Crosstalk | f=1kHz, $V_O=1V_{rms}$, Gain=20dB | | -83 | | dB |
| f_{OSC} | Oscillator frequency | | 250 | 310 | | kHz |
| T_{SD} | Thermal trip point | | | 170 | | $^{\circ}C$ |
| T_{SD_HY} | Thermal hysteresis | | | 20 | | $^{\circ}C$ |

TYPICAL PERFORMANCE CHARACTERISTICS

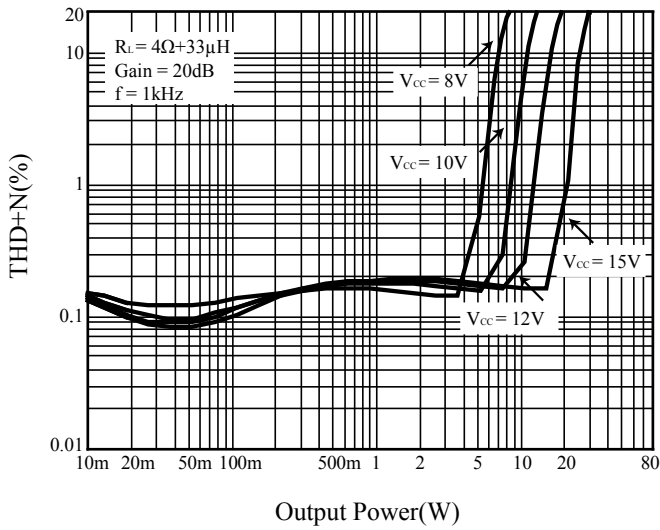


Figure 3 THD+N vs. Output Power

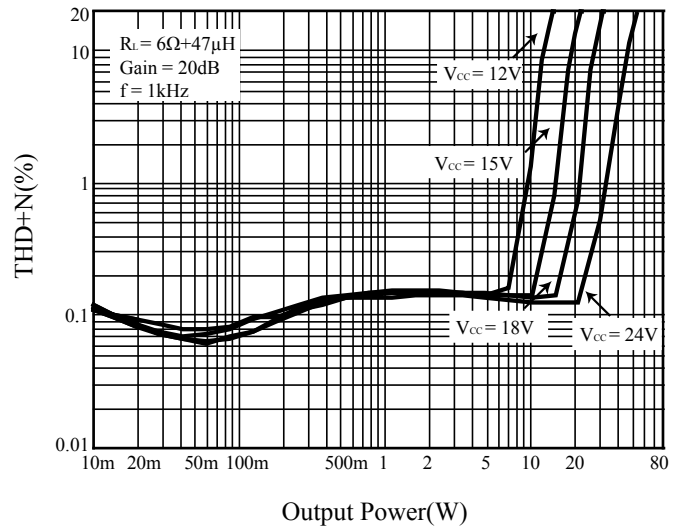


Figure 4 THD+N vs. Output Power

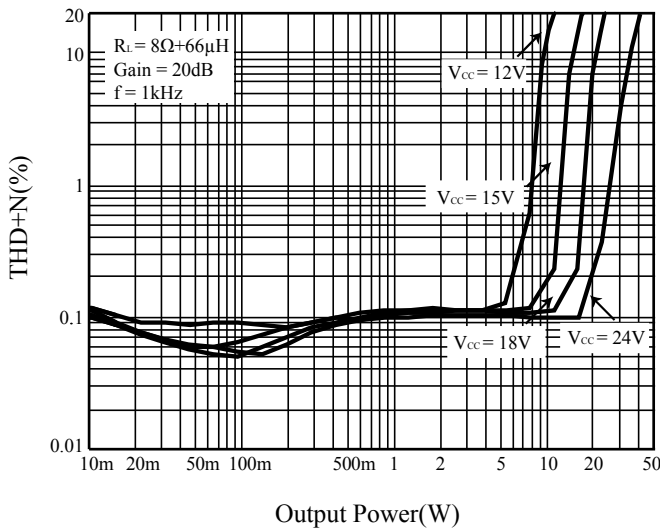


Figure 5 THD+N vs. Output Power

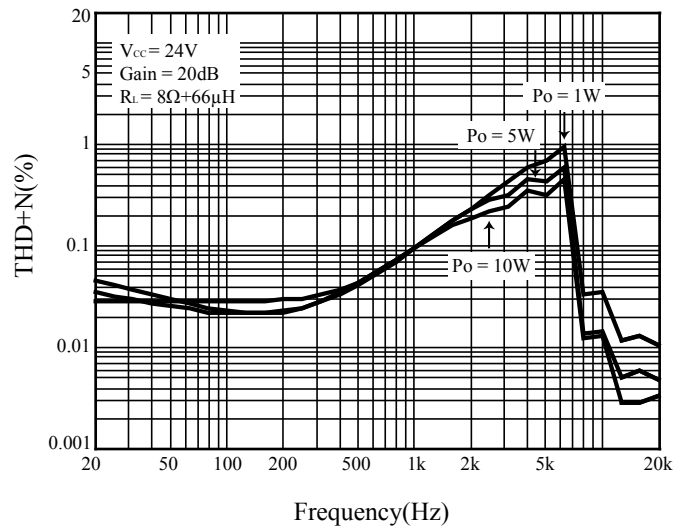


Figure 6 THD+N vs. Frequency

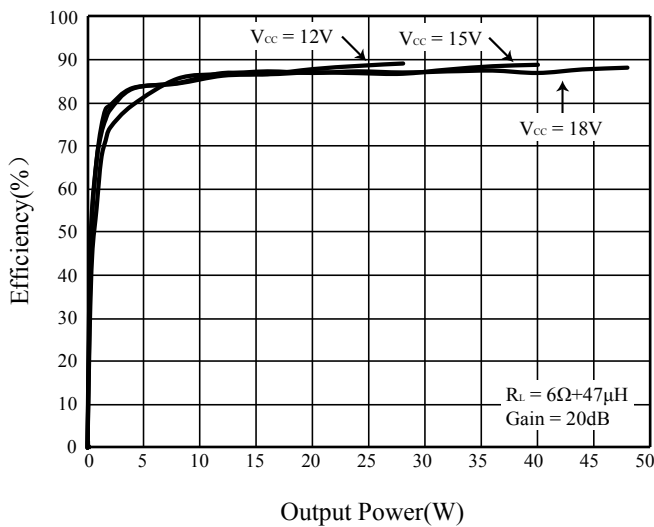


Figure 7 Efficiency vs. Output Power

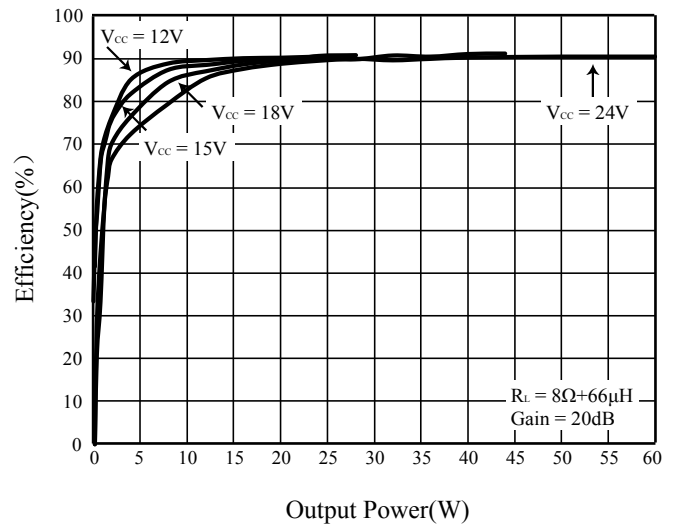


Figure 8 Efficiency vs. Output Power

IS31AP2110

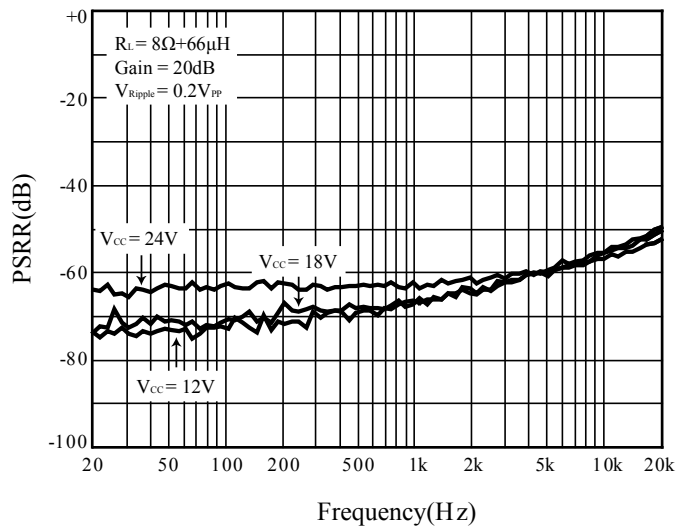
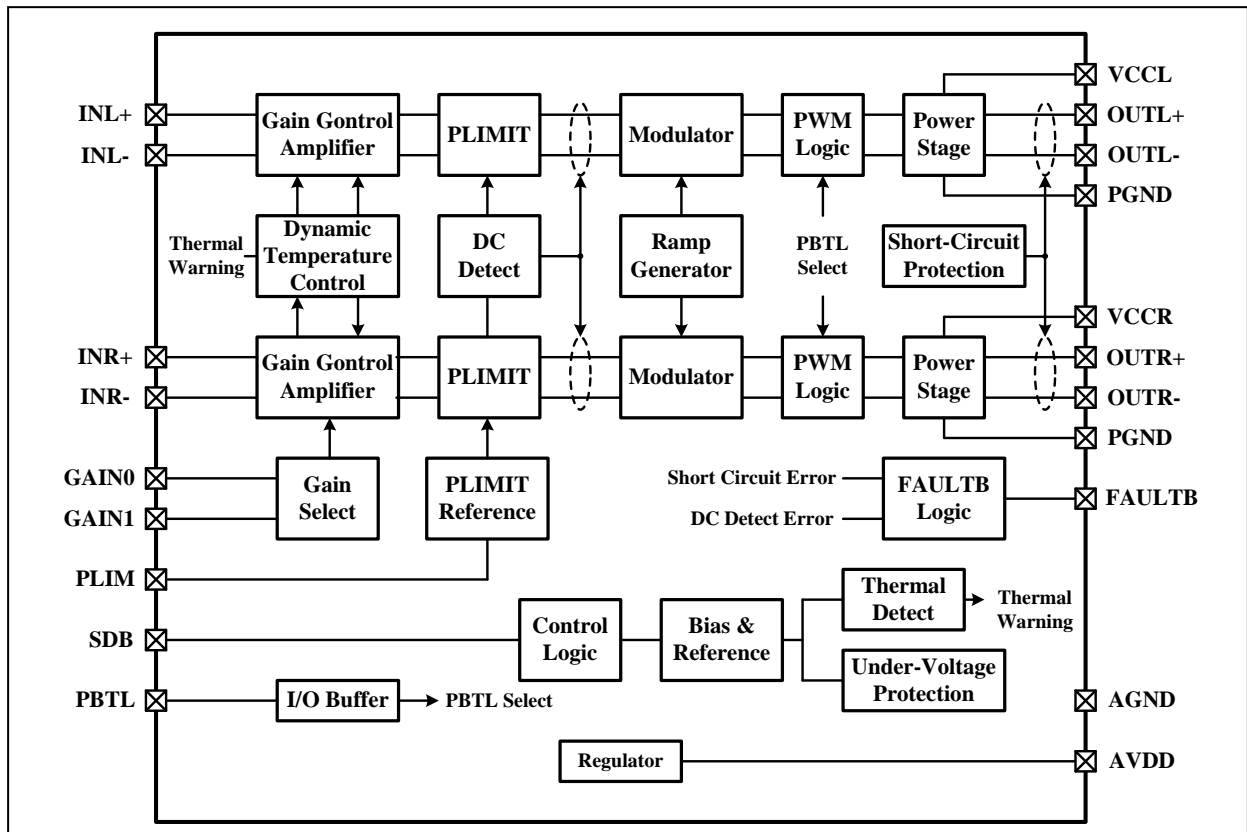


Figure 9 PSRR

IS31AP2110

FUNCTIONAL BLOCK DIAGRAM



IS31AP2110

APPLICATIONS INFORMATION

GAIN SETTINGS

The gain of the IS31AP2110 is set by two input pins, GAIN0 and GAIN1. By varying input resistance in IS31AP2110, the various volume gains are achieved. The respective volume gain and input resistance are listed in Table 1. However, there is 20% variation in input resistance from production variation.

Table 1 Volume gain and input impedance

| GAIN1 | GAIN0 | Volume Gain (dB) | Input Resistance, R_{IN} (k Ω) |
|-------|-------|------------------|--|
| 0 | 0 | 20 | 60 |
| 0 | 1 | 26 | 30 |
| 1 | 0 | 32 | 15 |
| 1 | 1 | 36 | 9 |

SHUTDOWN (SDB) CONTROL

Pulling SDB pin low will let IS31AP2110 operate in low-current state for power conservation. The IS31AP2110 outputs will enter mute once SDB pin is pulled low, and regulator will also disable to save power. If let SDB pin floating, the chip will enter shutdown mode because of the internal pull low resistor. For the best power-off performance, place the chip in the shutdown mode in advance of removing the power supply.

DC DETECTION

IS31AP2110 has dc detection circuit to protect the speakers from DC current which might be occurred as input capacitor defect or inputs short on printed circuit board. The detection circuit detects first volume amplifier stage output, when both differential outputs' voltage become higher than a determined voltage or lower than a determined voltage for more than 420ms, the dc detect error will occur and report to FAULTB pin. At the same time, loudspeaker drivers of right/left channel will disable and enter Hi-Z. This fault can't be cleared by cycling SDB, it is necessary to cycle the V_{CC} supply.

The minimum differential input voltages required to trigger the DC detect function are shown in table2. The input voltage must keep above the voltage listed in the table for more than 420msec to trigger the DC detect fault. The equivalent class-D output duty of the DC detect threshold is listed in table3. For 8V supply, DC detect fault will occur as output duty exceed 13% for more than 420msec.

Table 2 DC Detect Threshold

| AV (dB) | V_{IN} (mV, differential) |
|---------|-----------------------------|
| 20 | 104 |
| 26 | 52 |
| 32 | 26 |
| 36 | 16 |

Table 3 Output DC Detect Duty (for Either Channel)

| V_{CC} (V) | Output Duty Exceeds |
|--------------|---------------------|
| 8 | 13% |
| 12 | 8.7% |
| 16 | 6.5% |
| 24 | 4.3% |

THERMAL PROTECTION

If the internal junction temperature is higher than 170°C, the outputs of loudspeaker drivers will be disabled and at low state. The temperature for IS31AP2110 returning to normal operation is about 150°C. The variation of protected temperature is about 10%. Thermal protection faults are not reported on the FAULTB pin.

SHORT-CIRCUIT PROTECTION

To protect loudspeaker drivers from over-current damage, IS31AP2110 has built-in short-circuit protection circuit. When the wires connected to loudspeakers are shorted to each other or shorted to GND or to V_{CC} , overload detectors may activate. Once one of right and left channel overload detectors are active, the amplifier outputs will enter a Hi-Z state and the protection latch is engaged. The short protection fault is reported on FAULTB pin as a low state. The latch can be cleared by reset SDB or power supply cycling.

The short circuit protection latch can have auto-recovery function by connect the FAULTB pin directly to SDB pin. The latch state will be released after 420ms, and the short protection latch will re-cycle if output overload is detected again.

UNDER-VOLTAGE DETECTION

When the AVDD voltage is lower than 2.7V or the V_{CC} voltage is lower than 7.5V, loudspeaker drivers of right/left channel will be disabled and kept at low state. Otherwise, IS31AP2110 return to normal operation.

IS31AP2110

OVER-VOLTAGE PROTECTION

When the V_{CC} is higher than 30V, loudspeaker will be disabled kept at low state. The protection status will be released as V_{CC} lower than 28.7V.

POWER LIMIT FUNCTION

The voltage at PLIM pin (pin 10) can be used to limit the power of first gain control amplifier output. Add a resistor divider from AVDD to ground to set the voltage V_{PLIMIT} at the PLIMIT pin. The voltage V_{PLIM} sets a limit on the output peak-to-peak voltage. The maximum BTL output voltage of the gain control amplifier is limited to $2 \times (1.55V - V_{PLIM})$. The Class-D BTL output voltage on loudspeaker is amplified by 9.95 of $2 \times (1.55V - V_{PLIM})$.

For normal BTL operation (Stereo) and PBTL (Mono) operation:

$$P_{OUT} = \left[2 \times |V_P| \times 9.95 \right]^2 \div (2 \times R_L)$$

for unclipped power (1)

Where:

- V_P is the peak voltage of gain control amplifier output,
- if $(V_{IN} \times G_V / 2) < (1.55V - V_{PLIM})$, then $V_P = (V_{IN} \times G_V / 2)$.
- If $(V_{IN} \times G_V / 2) > (1.55V - V_{PLIM})$, then $V_P = (1.55V - V_{PLIM})$.
- V_{IN} is the input peak voltage.
- G_V is the gain of gain control amplifier, the four gain levels are 1V/V, 2V/V, 4V/V, 6.34V/V, corresponding to 20dB, 26dB, 32dB, 36dB overall gain.
- AVDD is the regulator output at pin 9, typical 3.3V.
- R_L is the load resistance.
- $P_{OUT} (10\% THD) = 1.25 \times P_{OUT} (unclipped)$.

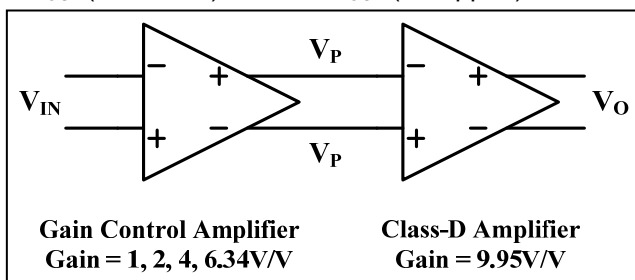


Figure 10 Gain Contribution of the Two Gain Stages

Table 4 PLIM Typical Operation

| Test Conditions | Output P_O (W) | $V_{PLIM}(V)$ @ THD+N=1% | $V_{PLIM}(V)$ @ THD+N=10% | Output Voltage (V_{P-P}) |
|-------------------------------|------------------|--------------------------|---------------------------|------------------------------|
| $V_{CC}=24V$ $R_L=8\Omega$ | 25 | 0.54 | 0.65 | 40 |
| | 20 | 0.65 | 0.75 | 35.6 |
| | 15 | 0.77 | 0.85 | 30.8 |
| | 10 | 0.91 | 0.98 | 25.2 |
| | 5 | 1.1 | 1.15 | 17.8 |

Note: Connect PLIM pin to AVDD (>1.55V) or GND (either one) to disable power limit function.

PBTL (MONO) FUNCTION

IS31AP2110 provides the application of parallel BTL operation with two outputs of each channel connected directly. If the PBTL pin is tied high, the positive and negative outputs of left and right channel are synchronized and in phase. Apply the input signal to the RIGHT channel input in PBTL mode and let the LEFT channel input grounded, and place the speaker between the LEFT and RIGHT outputs. The output current capability is doubled of that in normal mode. See the application circuit example for PBTL (Mono) mode operation. For normal BTL (Stereo) operation, connect the PBTL pin to ground.

DYNAMIC TEMPERATURE CONTROL (DTC)

The DTC function is designed to protect the loudspeaker from over heating. As the junction temperature is higher than OT_W , the gain of amplifier will decrease step by step every 0.25s. Finally, as the junction temperature is lower than OT_R , the attenuated gain steps will be released step by step every 0.5s. If DTC can't suppress the temperature and the temperature reach to the OT trip point ($170^\circ C$), the amplifier will be shutdown. The OT hysteresis temperature equals to OT_R . Typically, OT_W is $160^\circ C$ and OT_R is $145^\circ C$.

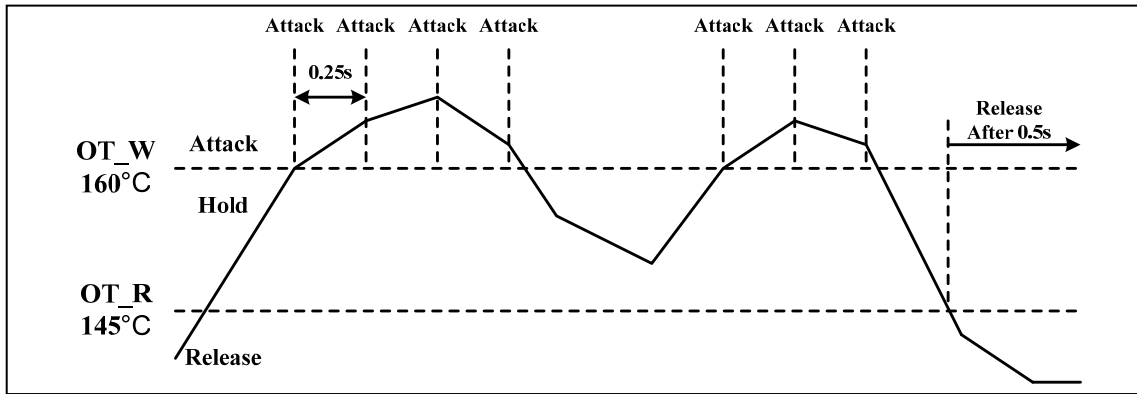


Figure 11 Dynamic Temperature Control Function

Input Capacitors (C_{IN})

The performance at low frequency (bass) is affected by the corner frequency (f_c) of the high-pass filter composed of input resistor (R_{IN}) and input capacitor (C_{IN}), determined in Equation (2). Typically, a 0.1 μ F or 1 μ F ceramic capacitor is suggested for C_{IN} . The resistance of input resistors is different at different gain setting. The respective gain and input resistance are listed in Table 1 (shown at GAIN SETTING). However, there is 20% variation in input resistance from production variation.

$$f_c = \frac{1}{2\pi R_{IN} C_{IN}} \text{ (Hz)} \quad (2)$$

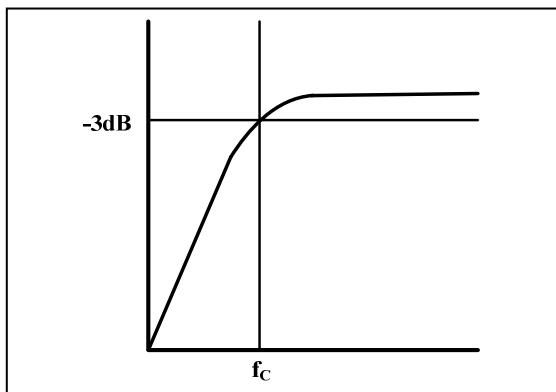


Figure 12 Corner Frequency

Ferrite Bead Selection

If the traces from the IS31AP2110 to speaker are short, the ferrite bead filters can reduce the high frequency emissions to meet FCC requirements. A ferrite bead that has very low impedance at low frequency and high impedance at high frequency (above 1MHz) is recommended. The impedance of the ferrite bead can be used along with a small capacitor with a value around 1000pF to reduce the frequency spectrum of the signal to an acceptable level.

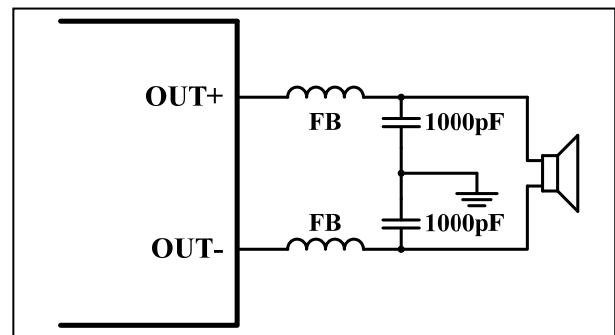


Figure 13 Typical Ferrite Bead Filter

Output LC Filter

If the traces from the IS31AP2110 to speaker are not short, it is recommended to add the output LC filter to eliminate the high frequency emissions. Figure 14 shows the typical output filter for 8 Ω speaker with a cut-off frequency of 27kHz and Figure 15 shows the typical output filter for 4 Ω speaker with a cut-off frequency of 27kHz.

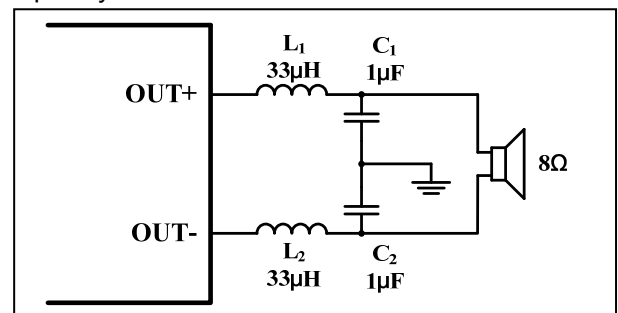


Figure 14 Typical LC Output Filter for 8 Ω Speaker

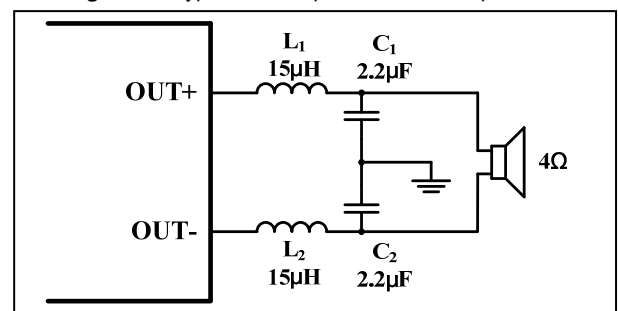


Figure 15 Typical LC Output Filter for 4 Ω Speaker

IS31AP2110

Power Supply Decoupling Capacitor (C_S)

Because of the power loss on the trace between the device and decoupling capacitor, the decoupling capacitor should be placed close to VCCR/L and PGND to reduce any parasitic resistor or inductor. A low ESR ceramic capacitor, typically 1000pF, is suggested for high frequency noise rejection. For mid-frequency noise filtering, place a capacitor typically 0.1μF or 1μF as close as possible to the device VCCR/L leads works best. For low frequency noise filtering, a 100μF or greater capacitor (tantalum or electrolytic type) is suggested.

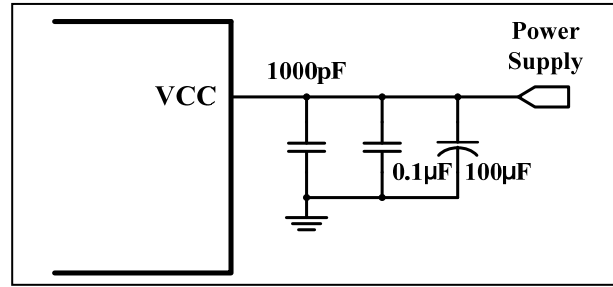


Figure 16 Recommended Power Supply Decoupling Capacitors.

IS31AP2110

CLASSIFICATION REFLOW PROFILES

| Profile Feature | Pb-Free Assembly |
|---|----------------------------------|
| Preheat & Soak Temperature min (T _{smn}) Temperature max (T _{smax}) Time (T _{smn} to T _{smax}) (t _s) | 150°C 200°C 60-120 seconds |
| Average ramp-up rate (T _{smax} to T _p) | 3°C/second max. |
| Liquidous temperature (T _L) Time at liquidous (t _L) | 217°C 60-150 seconds |
| Peak package body temperature (T _p)* | Max 260°C |
| Time (t _p)** within 5°C of the specified classification temperature (T _c) | Max 30 seconds |
| Average ramp-down rate (T _p to T _{smax}) | 6°C/second max. |
| Time 25°C to peak temperature | 8 minutes max. |

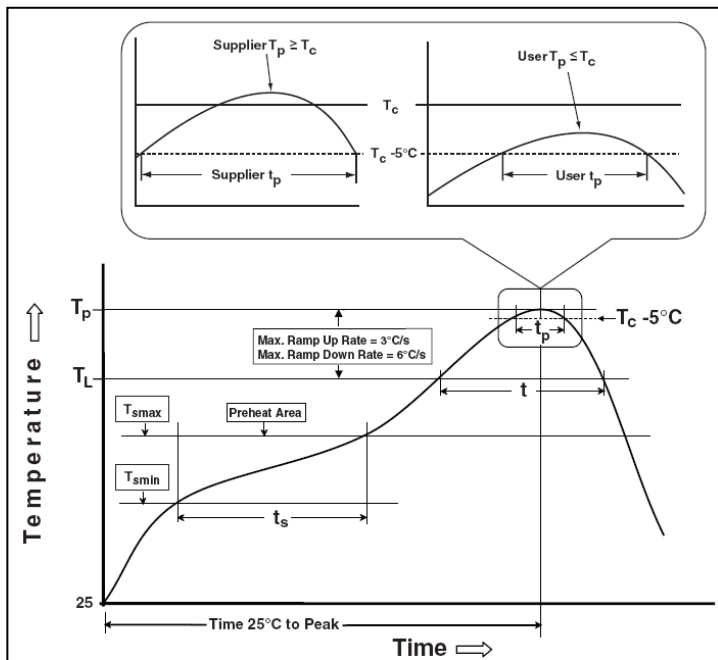
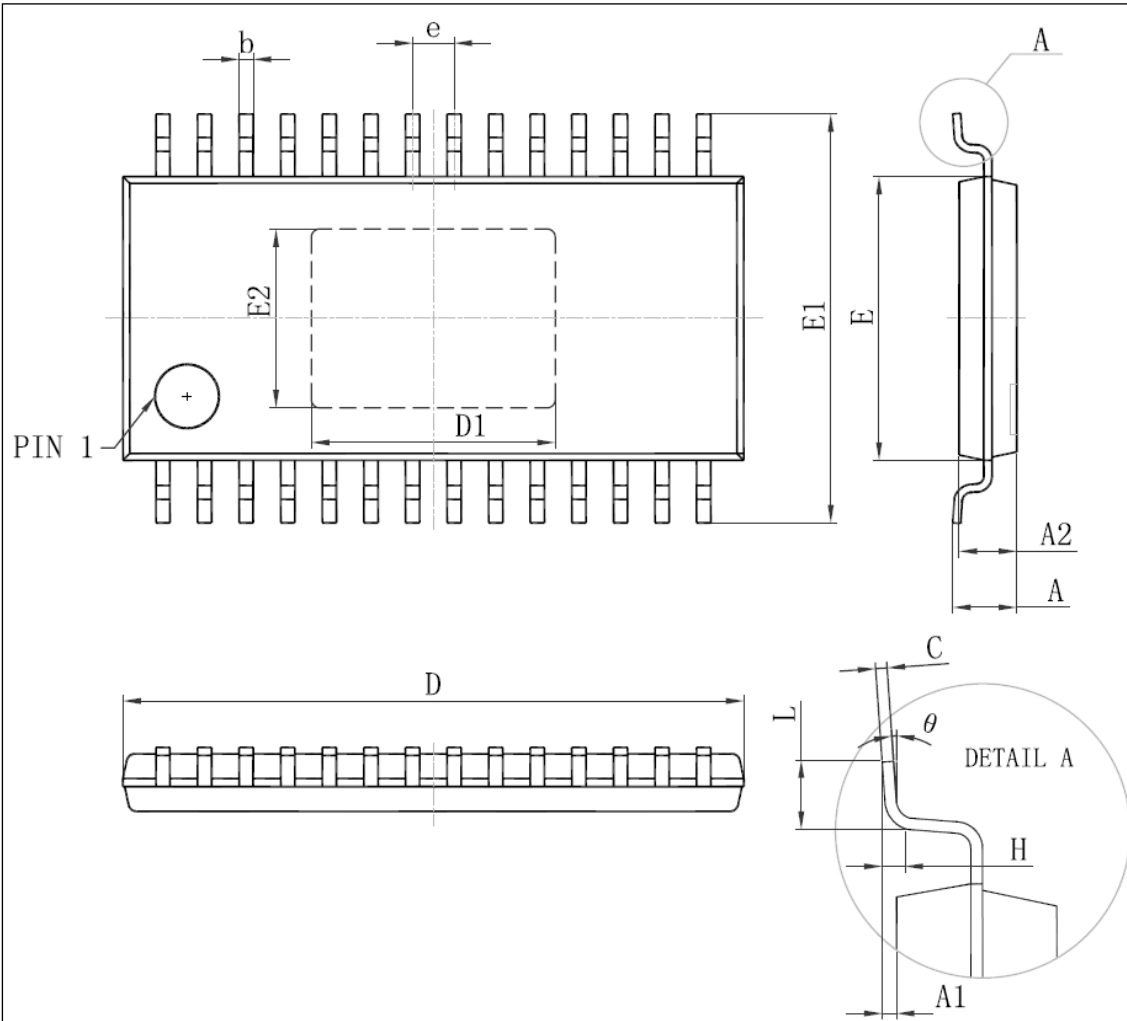


Figure 17 Classification Profile

IS31AP2110

PACKAGE INFORMATION

eTSSOP-28



| Symbol | Dimensions In Millimeters | | Dimensions In Inches | |
|--------|---------------------------|-------|----------------------|-------|
| | Min | Max | Min | Max |
| D | 9.600 | 9.800 | 0.378 | 0.386 |
| D1 | 3.710 | 3.910 | 0.146 | 0.154 |
| E | 4.300 | 4.500 | 0.169 | 0.177 |
| b | 0.190 | 0.300 | 0.007 | 0.012 |
| c | 0.090 | 0.200 | 0.004 | 0.008 |
| E1 | 6.250 | 6.550 | 0.246 | 0.258 |
| E2 | 2.700 | 2.900 | 0.106 | 0.122 |
| A | | 1.100 | | 0.043 |
| A2 | 0.800 | 1.000 | 0.031 | 0.039 |
| A1 | 0.020 | 0.150 | 0.001 | 0.006 |
| e | 0.65 (BSC) | | 0.026 (BSC) | |
| L | 0.500 | 0.700 | 0.02 | 0.028 |
| H | 0.25(TYP) | | 0.01(TYP) | |
| θ | 1° | 7° | 1° | 7° |