

Metallized Polypropylene Film A.C.Capacitor For Capacitive Divider – JFLA



FEATURES

- Metallized polypropylene film, non-inductive wound construction.
- Good self-healing properties, withstanding surge voltage stressing.
- Long stability of capacitance.
- Good properties in damp environment.
- Flame resistant epoxy resin powder coating (UL94/V-0).

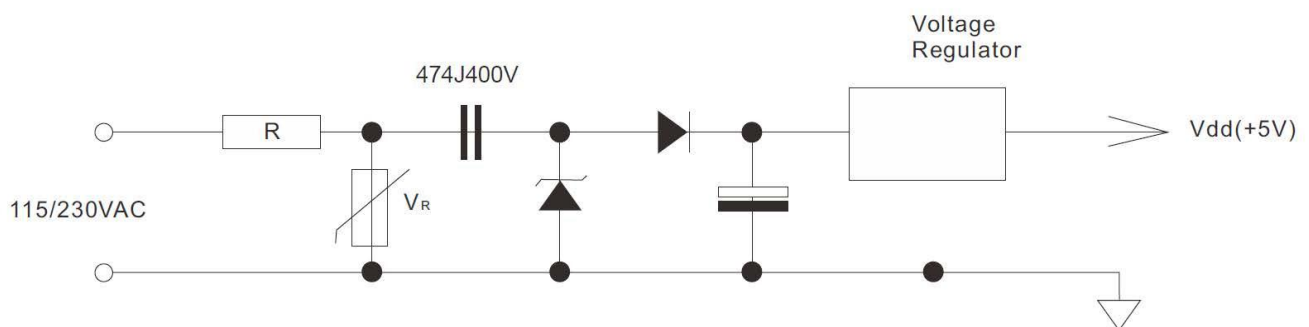
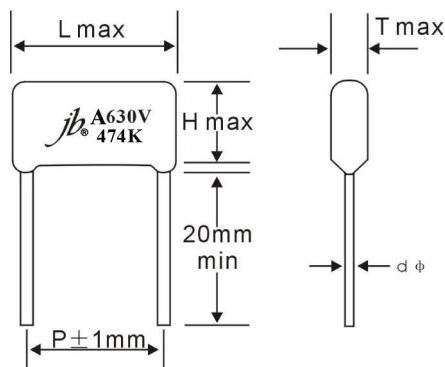
Type Application

Suitable for applications in serial with the 100~240Vac mains, as a small power LED driver module, small household electrical appliances control panel (electric kettle, electric cooker, coffee machine, hair straightener etc.), thermostat, replace the transformer. Widely used in LC resonant, high frequency high current situation

SPECIFICATIONS

Reference Standard	GB/T 14579 (IEC 60384-17)			
Climatic Category	40/105/21 B			
Rated Temperature	105°C			
Operating Temperature	-40°C ~ +105°C			
Rated Voltage(50/60Hz)	160Vac	230Vac	250Vac	275Vac/300Vac
Maximum Continuous DC Voltage	400Vdc		630Vdc	
Voltage Proof	1.6U _R (5S)			
Capacitance Range	0.01 ~ 4.7 μF			
Capacitance Tolerance	±5% (J), ±10% (K)			
Insulation Resistance	R ≥ 15000MΩ C _N ≤ 0.33μF			
	R ≥ 5000s C _N > 0.33μF			
	(20°C, 100V, 1min)			
Dissipation Factor	≤ 0.1% (20°C, 1KHz)			

Note: For long life time and continuous working, please choose 275Vac and upwards



Metallized Polypropylene Film A.C.Capacitor For Capacitive Divider – JFLA

STANDARD SIZE (mm)										
VDC Mfd	400 VDC (2G)					630 VDC (2J)				
	L	T	H	d	P	L	T	H	d	P
0.01	13	5.5	9	0.6	10	13	5.5	9	0.6	10
	10	5	8	0.6	7.5					
0.012~0.015	10.5	5	8	0.6	7.5	13	6	10	0.6	10
	13	6	10	0.6	10					
0.018~0.022	13	7	11	0.6	10	13	7	11	0.6	10
						18	5.5	9.5	0.6	15
0.033~0.036	13	6.5	10	0.6	10	13	6.5	10	0.6	10
	18	6.5	11.5	0.6	15	18	6.5	11.5	0.6	15
0.039	13	6	11	0.6	10	18	6.5	12	0.6	15
0.047	13	6.5	11.5	0.6	10	13	6.5	11.5	0.6	10
	18	7.5	12	0.6	15	17	7.5	12	0.6	15
0.068	13	6	10.5	0.6	10	13	8	13	0.6	10
	18	6	9.5	0.6	15	18	8.5	13.5	0.6	15
0.1	13	7	12	0.6	10	18	6.5	11	0.6	15
	18	6.5	11	0.6	15	18	10.5	16	0.8	15
0.15	19	7.5	13	0.8	15	19	7.5	13	0.8	15
0.22	18	9	14.5	0.8	15	18	9	14.5	0.8	15
0.33~0.39	18	9	16	0.5	15	25	8.5	15	0.8	22.5
	23	7.5	14.5	0.8	20					
0.47	23	8	15	0.8	20	23	8	15	0.8	20
	25	9.5	16	0.8	22.5	25	9.5	16	0.8	22.5
0.56	23	9	15.5	0.8	20	25	10.5	17	0.8	22.5
	18	11	17.5	0.6	15	31	9	17	0.8	27.5
0.68	25	10.5	18	0.8	22.5	23	11.5	18	0.8	20
	23	11.5	18	0.8	20	31	11	18	0.8	27.5
	23	8	14	0.8	20					
0.82	25	10.5	17	0.8	22.5					
1.0	25	11.5	18	0.8	22.5	25	13	21	0.8	22.5
	23	10	16	0.8	20	31	12	20	0.8	27.5
	31	10	18.5	0.8	27.5					
1.5	23	12	20	0.8	20	31	15	23	0.8	27.5
	23	9	17	0.8	20					
	31	10.5	19	0.8	27.5					
2	25	13	21	0.8	22.5					
	23	10	16	0.8	20					
	31	15	23	0.8	27.5					
2.2	25	14	22	0.8	22.5					
	23	11	19	0.8	20					
	31	15.5	24	0.8	27.5					
3.3	23	14	22	0.8	20					
	31	16.5	24.5	0.8	27.5					

Please visit our website to get more update data, those data & specification are subject to change without notice.