

KSR2101

PNP EPITAXIAL SILICON TRANSISTOR

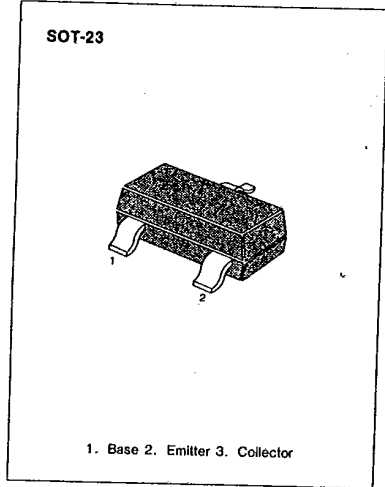
T-37-13

SWITCHING APPLICATION (Bias Resistor Built In)

- Switching Circuit, Inverter, Interface circuit
Driver circuit
- Built in bias Resistor ($R_1=4.7K\Omega$, $R_2=4.7K\Omega$)
- Complement to KSR1101

ABSOLUTE MAXIMUM RATINGS ($T_a=25^\circ C$)

Characteristic	Symbol	Rating	Unit
Collector-Base Voltage	V_{CB0}	-50	V
Collector-Emitter Voltage	V_{CE0}	-50	V
Emitter-Base Voltage	V_{EB0}	-10	V
Collector Current	I_c	-100	mA
Collector Dissipation	P_c	200	mW
Junction Temperature	T_j	150	$^\circ C$
Storage Temperature	T_{stg}	-55 - 150	$^\circ C$

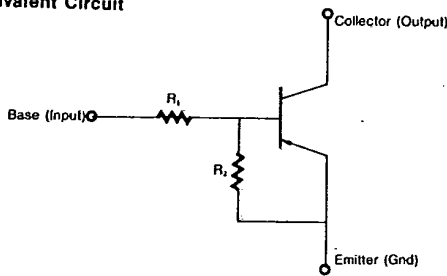


3

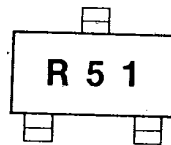
ELECTRICAL CHARACTERISTICS ($T_a=25^\circ C$)

Characteristic	Symbol	Test Condition	Min	Typ	Max	Unit
Collector-Base Breakdown Voltage	BV_{CB0}	$I_c = -10\mu A, I_E = 0$	-50			V
Collector-Emitter Breakdown Voltage	BV_{CE0}	$I_c = -100\mu A, I_B = 0$	-50			V
Collector Cutoff Current	I_{CB0}	$V_{CB} = -40V, I_E = 0$			-0.1	μA
DC Current Gain	h_{FE}	$V_{CE} = -5V, I_c = -10mA$	30			
Collector-Emitter Saturation Voltage	$V_{CE(sat)}$	$I_c = -10mA, I_B = -0.5mA$			-0.3	V
Current Gain-Bandwidth Product	f_T	$V_{CE} = -5mA, I_c = -10V$		200		MHz
Output Capacitance	C_{ob}	$V_{CB} = -10V, I_E = 0$ $f = 1.0MHz$		5.5		pF
Input Off Voltage	$V_i(off)$	$V_{CE} = -5V, I_c = -100\mu A$	-0.5			V
Input On Voltage	$V_i(on)$	$V_{CE} = -0.3V, I_c = -20mA$			-3	V
Input Resistor	R_1		3.2	4.7	6.2	$K\Omega$
Resistor Ratio	R_1/R_2		0.9	1	1.1	

Equivalent Circuit



Marking

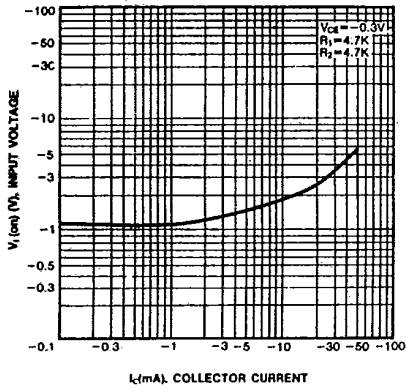


KSR2101

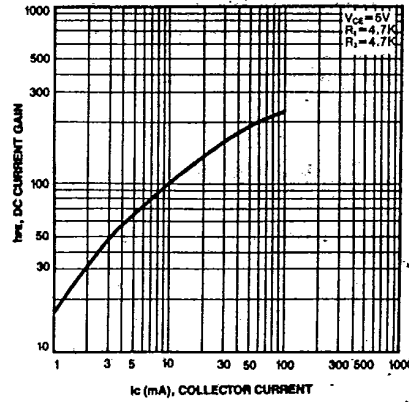
PNP EPITAXIAL SILICON TRANSISTOR

T-37-13

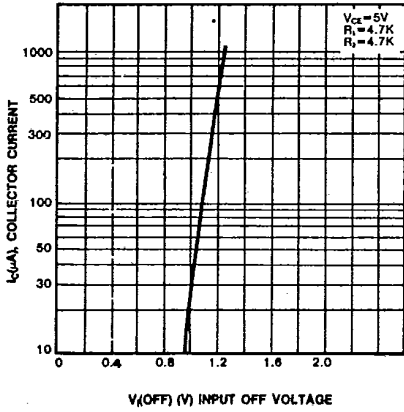
INPUT ON VOLTAGE



DC CURRENT GAIN



INPUT OFF VOLTAGE



POWER DERATING

