



# LC03CI THRU LC24CI

## STANDARD CAPACITANCE TVS ARRAY / ESD ARRAY

### APPLICATIONS

- Cell Phone Handsets and Accessories
- Microprocessor based equipment
- Personal Digital Assistants (PDA's)
- Notebooks, Desktops, and Servers
- Portable Instrumentation
- Peripherals
- USB Interface



### PACKAGE : SOD-323



### IEC COMPATIBILITY

- IEC61000-4-2 (ESD)  $\pm 15\text{kV}$  (air),  $\pm 8\text{kV}$  (contact)
- IEC61000-4-4 (EFT) 40A (5/50ns)
- IEC61000-4-5 (Lightning) 12A (8/20 $\mu\text{s}$ )

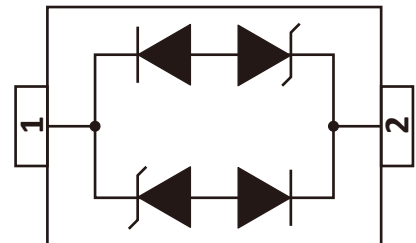
### FEATURES

- 350 Watts Peak Pulse Power per Line (tp=8/20 $\mu\text{s}$ )
- Protects one I/O or power line
- Low clamping voltage
- Working voltages: 3V, 5V, 12V, 15V, 24V
- Low leakage current

### MECHANICAL CHARACTERISTICS

- JEDEC SOD-323 Package
- Molding Compound Flammability Rating : UL 94V-0
- Weight 5 Milligrams (Approximate)
- Quantity Per Reel : 3,000pcs
- Reel Size : 7 inch
- Lead Finish : Lead Free

### PIN CONFIGURATION



BIDIRECTIONAL



# LC03CI THRU LC24CI

## STANDARD CAPACITANCE TVS ARRAY / ESD ARRAY

### DIVICE CHARACTERISTIC

#### MAXIMUM RATINGS @ 25°C Unless Otherwise Specified

PARAMETER	SYMBOL	VALUE	UNITS
Peak Pulse Power (tp=8/20µs waveform)	PPP	350	Watts
Lead Soldering Temperature	TL	260 (10 sec.)	°C
Operating Temperature Range	TJ	-55 ~ 150	°C
Storage Temperature Range	TSTG	-55 ~ 150	°C

#### ELECTRICAL CHARACTERISTICS PER LINE @ 25°C Unless Otherwise Specified

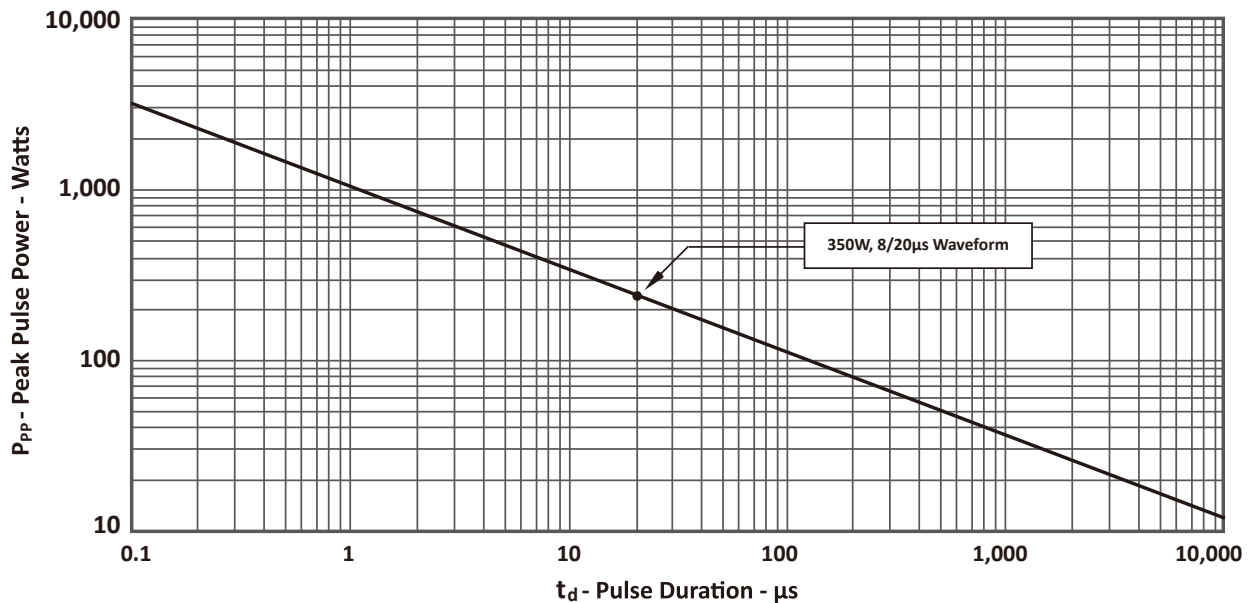
PART NUMBER	VRWM	VB	IT	Vc	Vc		IR	CT
	(V) (max.)	(V) (min.)	(mA)	@1A (max.)	(max.)	(@A)	(µA) (max.)	(pF) (max.)
LC03CI	3.0	4.0	1	5.15	13.9	8	20	0.4
LC05CI	5.0	6.0	1	9.80	18.3	8	5	0.4
LC08CI	8.0	8.5	1	13.40	18.5	8	2	0.4
LC12CI	12.0	13.3	1	19.00	28.6	6	1	0.4
LC15CI	15.0	16.7	1	24.00	31.8	5	1	0.4
LC24CI	24.0	26.7	1	43.00	56.0	3	1	0.4



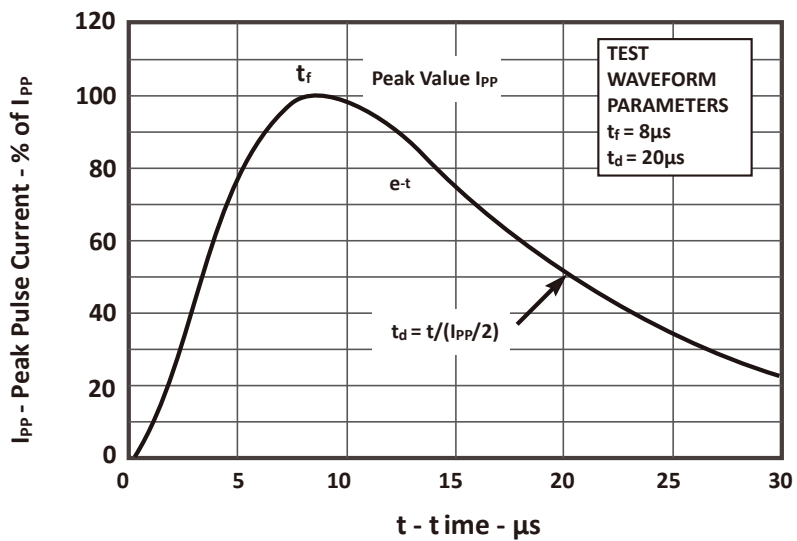
# LC03CI THRU LC24CI

## STANDARD CAPACITANCE TVS ARRAY / ESD ARRAY

### Peak Pulse Power VS Pulse Time



### Pulse Wave Form

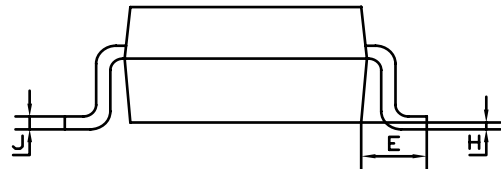
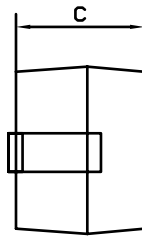
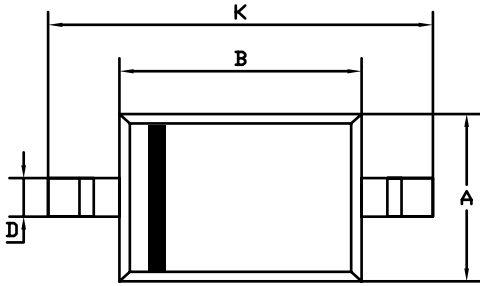




# LC03CI THRU LC24CI

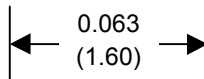
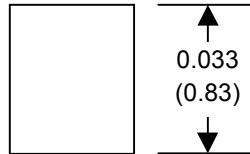
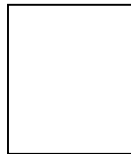
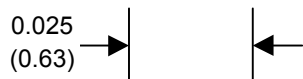
## STANDARD CAPACITANCE TVS ARRAY / ESD ARRAY

### SOD-323 PACKAGE OUTLINE & DIMENSIONS



SOD-323		
Dim	Min	Max
A	1.275	1.325
B	1.675	1.725
C	0.9 Typical	
D	0.25	0.35
E	0.27	0.37
H	0.02	0.1
J	0.1 Typical	
K	26	27
All Dimensions in mm		

### SUGGESTED SOLDER PAD LAYOUT



inches(mm)