

How To Order M32139 Single Row Metal Shell Connectors

Basic Spec	Slash Number -	Hardware	Shell Material	Space Class	
M32139/	<p>Plugs</p> <p>01-A – Pin Connector, 9 Contacts 01-B – Pin Connector, 15 Contacts 01-C – Pin Connector, 21 Contacts 01-D – Pin Connector, 25 Contacts 01-E – Pin Connector, 31 Contacts 01-F – Pin Connector, 37 Contacts 01-G – Pin Connector, 51 Contacts</p> <p>Receptacles</p> <p>02-A – Socket Connector, 9 Contacts 02-B – Socket Connector, 15 Contacts 02-C – Socket Connector, 21 Contacts 02-D – Socket Connector, 25 Contacts 02-E – Socket Connector, 31 Contacts 02-F – Socket Connector, 37 Contacts 02-G – Socket Connector, 51 Contacts</p>	<p>NEMA HP3-ETXBBB Wire (#30 AWG, 7 Strand Silver-Coated Copper, Extruded PTFE Insulation, 250 V rms, 200° C.)</p> <p>01 – 6 Inches White 02 – 18 Inches White 03 – 36 Inches White 04 – 6 Inches 10 Color Repeat 05 – 18 Inches 10 Color Repeat 06 – 36 Inches 10 Color Repeat</p> <p>M22759/33-30 Wire (#30 AWG, 7 Strand Silver-Coated High-Strength Copper, Extruded Cross-Linked Modified ETFE Insulation, 600 V rms, 200° C.)</p> <p>07 – 6 Inches White 08 – 18 Inches White 09 – 36 Inches White 10 – 6 Inches 10 Color Repeat 11 – 18 Inches 10 Color Repeat 12 – 36 Inches 10 Color Repeat</p> <p>Composite PTFE/Polyimide Wire (#30 AWG, 7 Strand Silver-Coated High-Strength Copper, Tape-Wrapped Dual-wall Modified ETFE/Polyimide Insulation, 600 V rms, 200° C.)</p> <p>13 – 6 Inches White 14 – 18 Inches White 15 – 36 Inches White 16 – 6 Inches 10 Color Repeat 17 – 18 Inches 10 Color Repeat 18 – 36 Inches 10 Color Repeat</p>	<p>S Jackscrew, #0-80, Hex Head (Slash 01 Pin Connectors Only)</p> <p>T Threaded Hole, #0-80 (Slash 02 Socket Connectors Only)</p>	<p>C Aluminum Shell, Cadmium Plated</p> <p>N Aluminum Shell, Electroless Nickel Plated</p> <p>S Stainless Steel Shell, Passivated</p> <p>T Titanium Shell, Unplated</p>	<p>S Space Class</p> <p>(Not For Use With Cadmium Plated Aluminum Shells)</p> <p>Omit for Non-Space Applications</p>

Part Number Example

M32139/

02-A

01

S

N

S

MIL-DTL-32139 Nanominiature Connectors

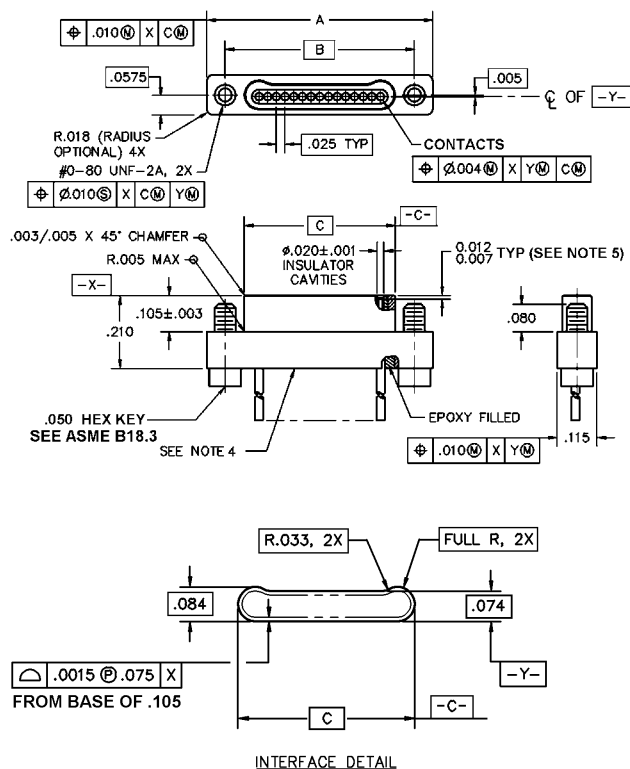
Single Row Metal Shell Pigtails (M32139/01 & /02)

Dimensions

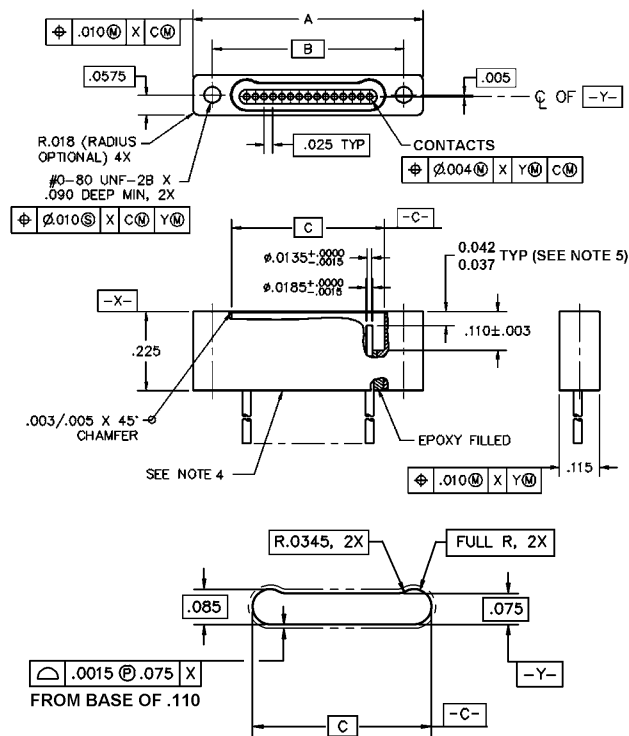


M32139/01 and /02 Single Row Dimensions

M32139/01 Pin Connectors



M32139/02 Socket Connectors



Insert Arrangement	Layout	A	B BSC	C BSC
A	9P	.500 (12.70)	.395 (10.03)	.284 (7.21)
B	15P	.650 (16.51)	.545 (13.84)	.434 (11.02)
C	21P	.800 (20.32)	.695 (17.65)	.584 (14.83)
D	25P	.900 (22.86)	.795 (20.19)	.684 (17.37)
E	31P	1.050 (26.67)	.945 (24.00)	.834 (21.18)
F	37P	1.200 (30.48)	1.095 (27.814)	.984 (24.99)
G	51P	1.550 (39.37)	1.445 (36.70)	1.334 (33.88)

Insert Arrangement	Layout	A	B BSC	C BSC
A	9P	.500 (12.70)	.395 (10.03)	.285 (7.24)
B	15P	.650 (16.51)	.545 (13.84)	.435 (11.05)
C	21P	.800 (20.32)	.695 (17.65)	.585 (14.86)
D	25P	.900 (22.86)	.795 (20.19)	.685 (17.40)
E	31P	1.050 (26.67)	.945 (24.00)	.835 (21.21)
F	37P	1.200 (30.48)	1.095 (27.814)	.985 (25.02)
G	51P	1.550 (39.37)	1.445 (36.70)	1.335 (33.91)