

E-Series 2-Way 0° Power Divider 5 – 900 MHz

MAPD-008072-ESSM26
V2P

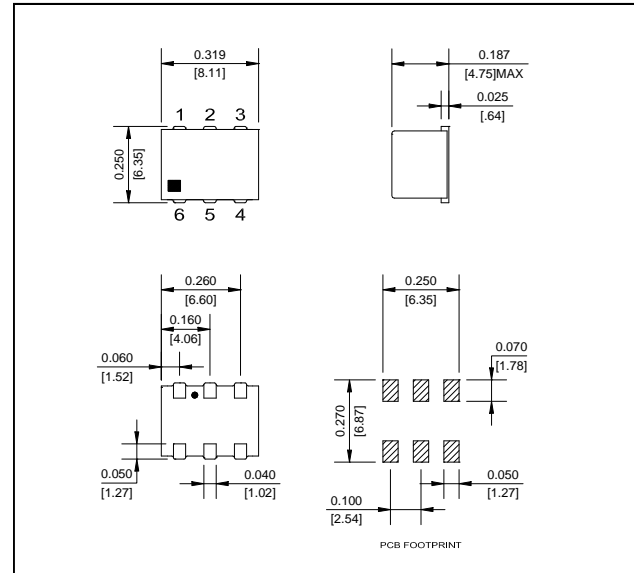
Features

- Surface mount
- Wide frequency range
- 2-Way—0°
- RoHS* Compliant and is 260°C reflow compatible.
- Available on Tape and Reel, reel quantity 900

Description

M/A-COM's MAPD-008072-ESSM26 is a RoHS compliant 2 Way 0° Power Divider in a low cost, surface mount package. Ideally suited for high volume cellular and wireless applications. Parts are packaged in tape & reel.

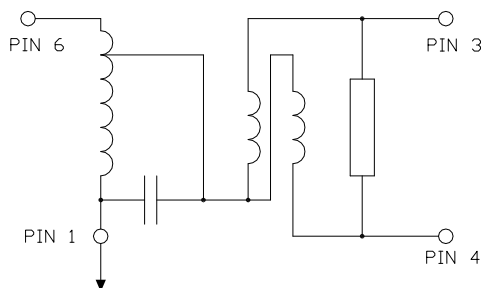
SM-1 Package



Pin Configuration

Pin No.	Function
1	Ground
2	Not Connected
3	Port 2
4	Port 1
5	Not Connected
6	Input

Schematic



This PRELIMINARY Data Sheet contains information regarding a product M/A-COM has under development. Performance is based on measured results and target specifications. Commitment to produce in volume is not guaranteed.

* Restrictions on Hazardous Substances, European Union Directive 2002/95/EC.

Ordering Information

Part Number	Package
MAPD-008072-ESSM26	900 piece reel

Note: Reference Application Note M513 for reel size information.

Absolute Maximum Ratings ^{1,2}

Parameter	Absolute Maximum
Maximum Power Rating	1 Watt
Internal Load Dissipation	0.125 Watt
Pin Temperature (10 Sec)	250°C
Operating Temperature	-40°C to +85°C
Storage Temperature	-55°C to +125°C

1. Exceeding any one or combination of these limits may cause permanent damage to this device.
2. M/A-COM does not recommend sustained operation near these survivability limits.

E-Series 2-Way 0° Power Divider
5 – 900 MHz

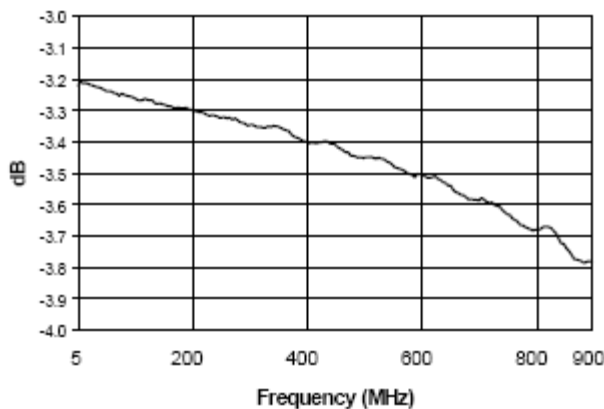
MAPD-008072-ESSM26
V2P

Electrical Specifications: $T_A = 25^\circ\text{C}$, $Z_0 = 50\Omega$ ¹

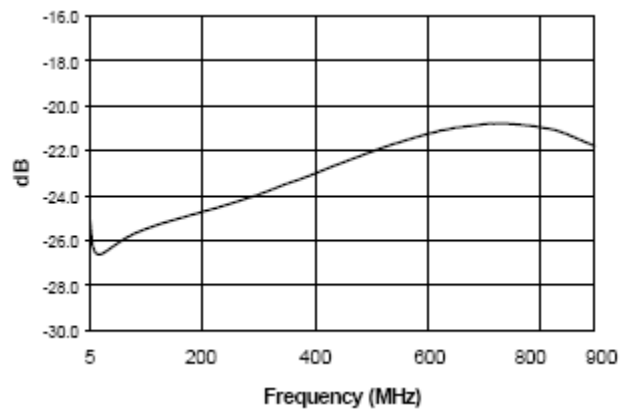
Parameter	Test Conditions	Frequency	Units	Min	Typ	Max
RF Frequency	—	5 - 900	MHz	—	—	—
Insertion Loss	F_L-f_U	5 - 50	dB	—	0.2	0.4
		50 - 450	dB	—	0.4	0.7
		450 - 900	dB	—	0.7	1.2
Isolation	F_L-f_U	5 - 50	dB	20	28	—
		50 - 450	dB	20	28	—
		450 - 900	dB	15	22	—
Amplitude Unbalance	F_L-f_U	5 - 50	dB	—	—	0.2
		50 - 450	dB	—	—	0.3
		450 - 900	dB	—	—	0.5
Phase Unbalance	F_L-f_U	5 - 50	Degrees	—	—	2
		50 - 450	Degrees	—	—	3
		450 - 900	Degrees	—	—	5
Input & Output Return Loss	F_L-f_U	5 - 900	dB	16.0	25.0	—

Typical Performance @ +25° C

Insertion Loss



Isolation



RoHS Compliant

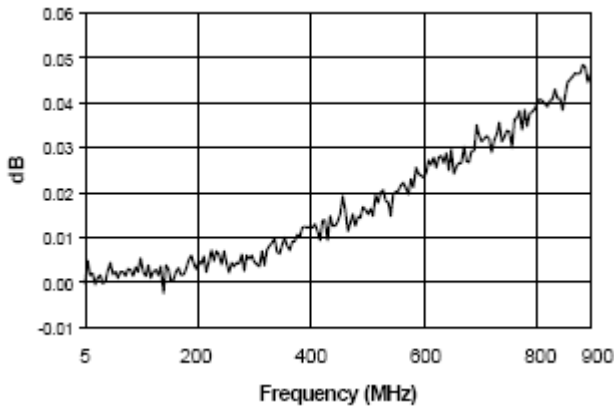


E-Series 2-Way 0° Power Divider
5 – 900 MHz

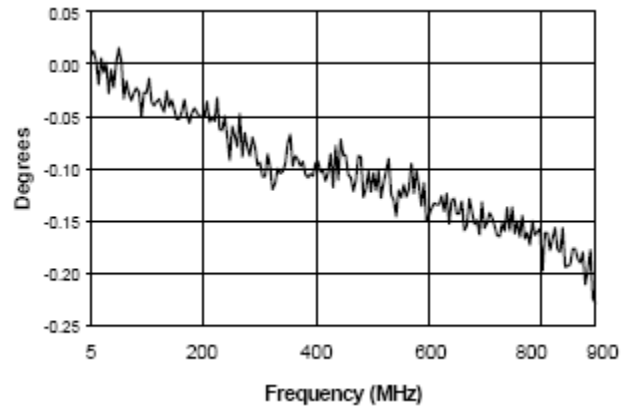
MAPD-008072-ESSM26
V2P

Typical Performance @ +25° C

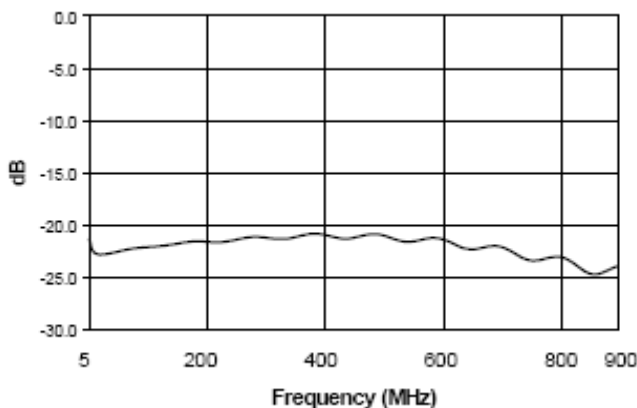
Amplitude Unbalance



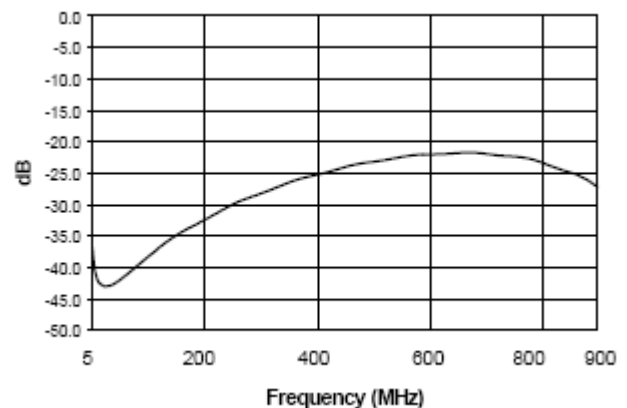
Phase Unbalance



Output Return Loss



Input Return Loss



ADVANCED: Data Sheets contain information regarding a product M/A-COM Technology Solutions is considering for development. Performance is based on target specifications, simulated results, and/or prototype measurements. Commitment to develop is not guaranteed.
PRELIMINARY: Data Sheets contain information regarding a product M/A-COM Technology Solutions has under development. Performance is based on engineering tests. Specifications are typical. Mechanical outline has been fixed. Engineering samples and/or test data may be available. Commitment to produce in volume is not guaranteed.

• **North America** Tel: 800.366.2266 • **Europe** Tel: +353.21.244.6400
• **India** Tel: +91.80.4155721 • **China** Tel: +86.21.2407.1588
Visit www.macomtech.com for additional data sheets and product information.

M/A-COM Technology Solutions Inc. and its affiliates reserve the right to make changes to the product(s) or information contained herein without notice.