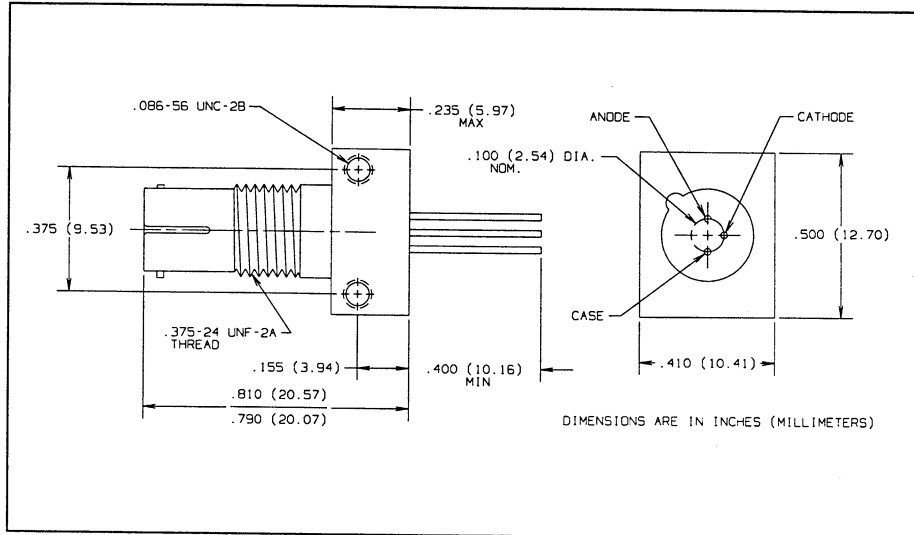
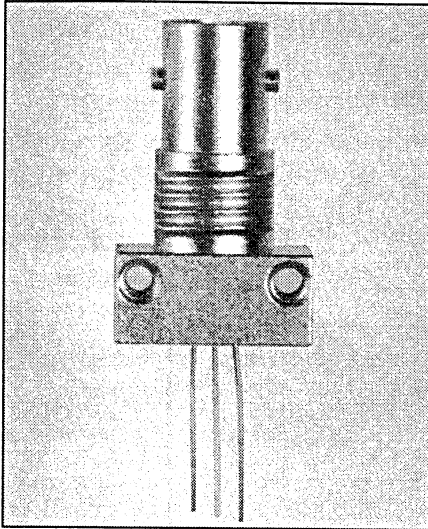


Fiber Optic PIN Photodiode in ST* Receptacle Type OPF422



Features

- Component pre-mounted and ready for use
- Pre-tested with fiber to assure performance
- Popular ST style receptacle

Description

The OPF422 consists of a hermetic PIN photodiode pre-mounted and aligned in an ST receptacle. This configuration is designed for PC board or panel mounting. Includes lock washer and jam nut, two 2-56 screws, and dust cap.

The PIN Photodiodes are designed to interface with multimode optical fibers from 50/125 to 200/300 microns.

*ST is a registered trademark of AT&T.

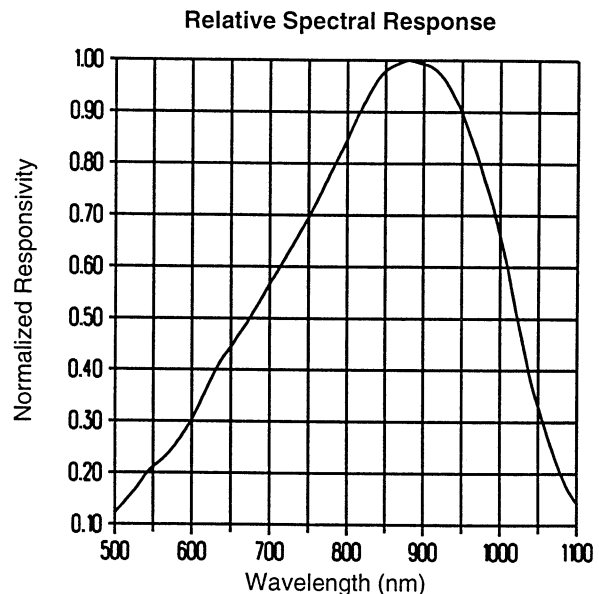
Absolute Maximum Ratings ($T_A = 25^\circ\text{C}$ unless otherwise noted)

| | |
|--|-----------------------|
| Reverse Voltage | 100 VDC |
| Continuous Power Dissipation | 200 mW ⁽¹⁾ |
| Storage Temperature Range | -55° C to +125° C |
| Operating Temperature Range | -40° C to +100° C |
| Lead Soldering Temperature [1/16 inch (1.6 mm) from case for 5 sec. with soldering iron] | 240° C ⁽²⁾ |

Notes:

- (1) Derate linearly @ 2.0mW/° C above 25° C.
- (2) RMA flux is recommended. Duration can be extended to 10 sec. max when flow soldering.
- (3) Test @ $V_R = 5\text{ V}$ with 50/125 micron, 0.20 N.A. fiber, @ 10 μW optical power @ 850 nm. Responsivity levels apply to 50 μm , 62.5 μm , and 100 μm core optical fibers.
- (4) $R_L = 50\ \Omega$, 10%-90%.

Typical Performance Curves

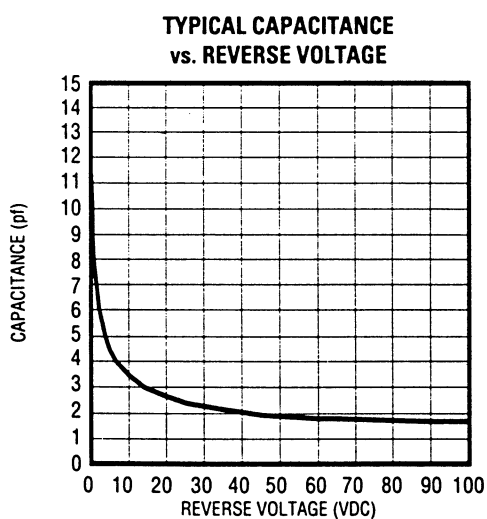
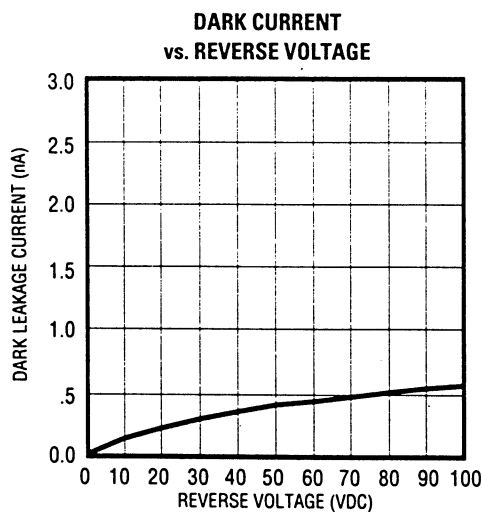
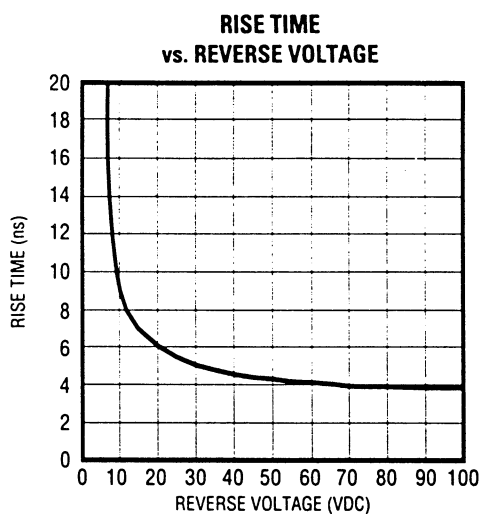
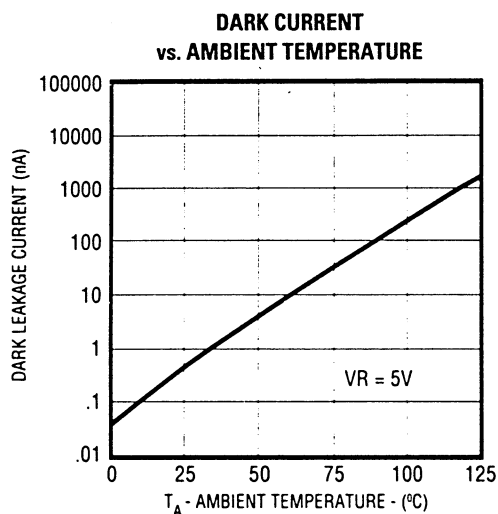


Type OPF422

Electrical Characteristics ($T_A = 25^\circ\text{C}$ unless otherwise noted)

| SYMBOL | PARAMETER | MIN | TYP | MAX | UNITS | TEST CONDITIONS |
|-------------|--------------------------|------|------|-----|-------|----------------------------|
| R | Flux Responsivity | 0.45 | 0.55 | | A/W | $V_R = 5.0\text{ V}^{(3)}$ |
| I_D | Dark Current | | 0.1 | 5.0 | nA | $V_R = 5.0\text{ V}$ |
| λ_p | Peak Response Wavelength | | 880 | | nm | |
| t_r | Output Rise Time | | 6.0 | | ns | $V_R = 15\text{ V}^{(4)}$ |
| C_T | Total Capacitance | | 3.0 | | pF | $V_R = 20\text{ V}$ |

TYPICAL PERFORMANCE CURVES



FIBER OPTIC
COMPONENTS

Optek reserves the right to make changes at any time in order to improve design and to supply the best product possible.

Optek Technology, Inc.

1215 W. Crosby Road

Carrollton, Texas 75006

(972)323-2200

Fax (972)323-2396