

# Low Voltage Capacitive Coupling Unit

P-1240-014, P-1240-021, P-1240-022, P-1240-032



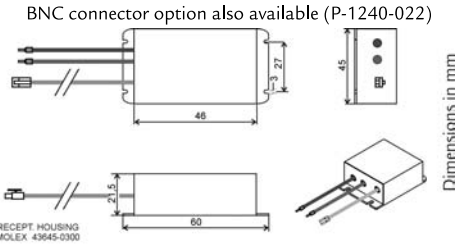
## Features

- Capacitive coupling unit for direct injection of the PLC signal into the powerline.
- RoHS compliant.

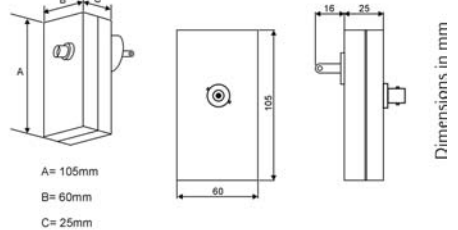
## Electrical parameters

Rated voltage	400 V
Rated frequency	50/60 Hz
Rated current (at rated temp.)	100 mA @ 40°C
Test voltage	2000 Vdc
Climatic category (DIN 40040)	HPF
TX1	1:1
C1	10 nF
C2	10 nF
C3	33 pF
STP adapter cable length	1 m
Powerline cable length	80 mm
Powerline cable section	4 mm <sup>2</sup>

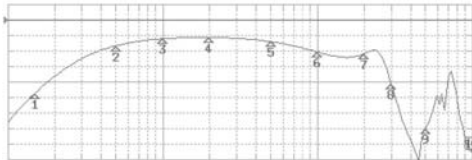
## Dimensions



European connector option also available (P-1240-032)

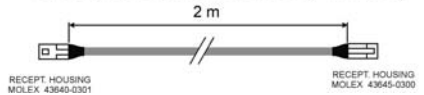


## Insertion losses

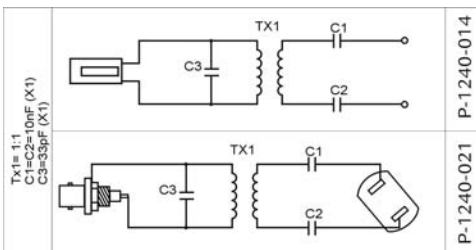


1	150 000 Hz	-7.433 dB	6	10 000 000 Hz	-2.126 dB
2	500 000 Hz	-1.306 dB	7	20 000 000 Hz	-2.308 dB
3	1000 000 Hz	-0.410 dB	8	30 000 000 Hz	-6.279 dB
4	2000 000 Hz	-0.247 dB	9	50 000 000 Hz	-12.060 dB
5	5000 000 Hz	-0.792 dB	10	100 000 000 Hz	-15.061 dB

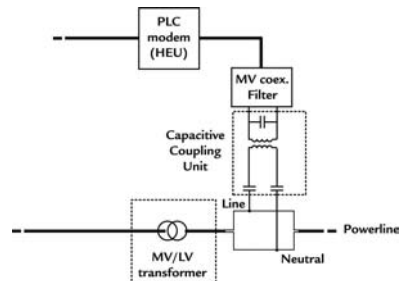
Extension cord SC-01 also available (P-1240-015)



## Electrical diagram



## Installation



# Low Voltage Inductive Coupling Unit

LICU 15A, 30A, 63A, 150A



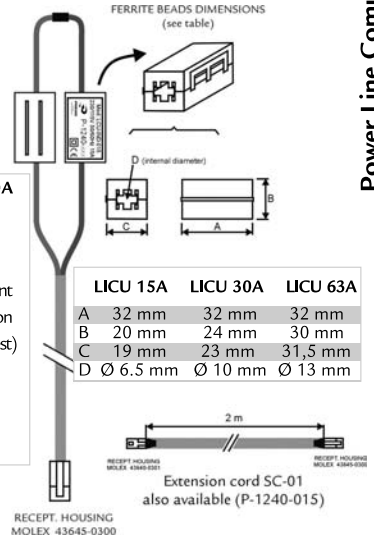
Electrical parameters

	LICU 15A	LICU 30A	LICU 63A
BNC Connector	(P-1240-023)	(P-1240-024)	(P-1240-027)
Molex Connector	(P-1240-012)	(P-1240-013)	(P-1240-020)
Rated voltage	230 V	230 V	230 V
Rated frequency	50-60 Hz	50-60 Hz	50-60 Hz
Rated current (at rated temp.)	15 A @ 40°C	30A @ 40°C	63A @ 40°C
Material	Ferrite	Ferrite	Ferrite
Climatic category (DIN 40040)	HPF	HPF	HPF
Cable length	1.5 m	1.5 m	1.5 m

## Features

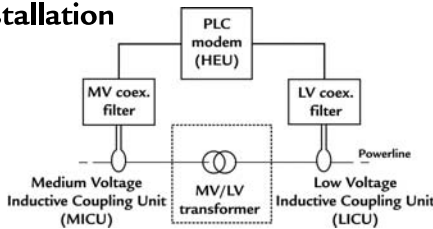
- Inductive coupling unit for injection of the PLC signal into the powerline.
- RoHS compliant.

## Dimensions

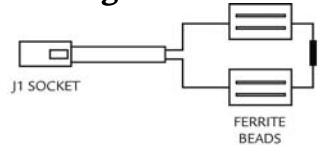


LICU 150A  
Under development (specification under request)

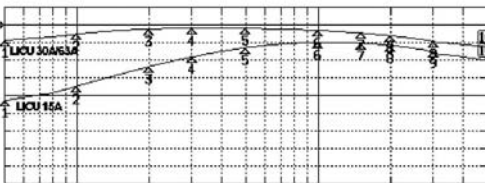
## Installation



## Electrical diagram



## Insertion losses



Freq. (MHz)	Insertion losses (dB)	
	LICU 15A	LICU 30A/63A
1	21.271	4.369
2	17.338	2.563
3	11.808	1.162
4	9.048	0.935
5	6.437	0.988
6	4.92	1.538
7	5.153	2.275
8	5.792	3.059
9	7.646	4.652
10	10.041	6.136

## Impedance response



Freq. (MHz)	Impedance (W)	
	LICU 15A	LICU 30A/63A
1	0.673	0.797
2	3.062	3.764
3	6.114	7.542
4	18.254	22.780
5	30.476	38.118
6	58.444	72.164
7	82.186	100.337
8	101.769	122.630
9	130.431	152.131
10	153.229	170.324