

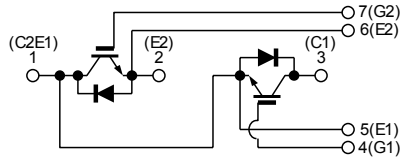
IGBT Module-Dual

300 A, 1200V

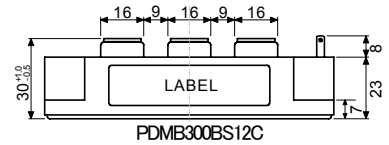
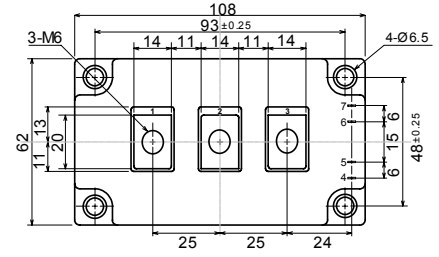
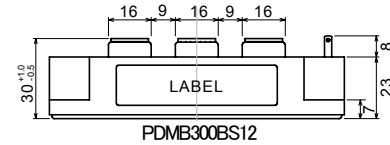
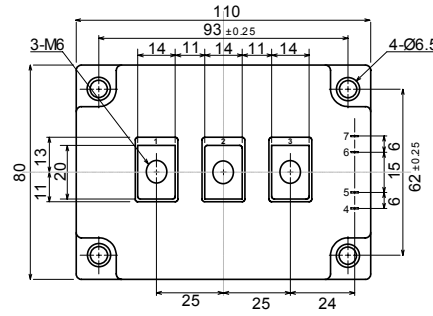
PDMB300BS12

PDMB300BS12C

回路図 : CIRCUIT



外形寸法図 : OUTLINE DRAWING



Dimension: [mm]

最大定格 : MAXIMUM RATINGS (T_c = 25°C)

Item	Symbol	Rated Value	Unit
コレクタ・エミッタ間電圧 Collector-Emittter Voltage	V _{CEs}	1,200	V
ゲート・エミッタ間電圧 Gate-Emittter Voltage	V _{GES}	±20	V
コレクタ電流 Collector Current	DC	I _C = 300	A
	1ms	I _{CP} = 600	
コレクタ損失 Collector Power Dissipation	P _C	1,800	W
接合温度 Junction Temperature Range	T _j	-40~+150	°C
保存温度 Storage Temperature Range	T _{stg}	-40~+125	°C
絶縁耐圧(Terminal to Base AC, 1 minute) Isolation Voltage	V _{ISO}	2,500	V (RMS)
締め付けトルク Mounting Torque	F _{tor}	3 (30.6)	N·m (kgf·cm)

電気的特性 : ELECTRICAL CHARACTERISTICS (T_c = 25°C)

Characteristic	Symbol	Test Condition	Min.	Typ.	Max.	Unit
コレクタ遮断電流 Collector-Emittter Cut-Off Current	I _{CEs}	V _{CE} = 1200V, V _{GE} = 0V	-	-	3.0	mA
ゲート漏れ電流 Gate-Emittter Leakage Current	I _{GES}	V _{GE} = ±20V, V _{CE} = 0V	-	-	1.0	μA
コレクタ・エミッタ間飽和電圧 Collector-Emittter Saturation Voltage	V _{CE(sat)}	I _C = 300A, V _{GE} = 15V	-	2.3	2.7	V
ゲートしきい値電圧 Gate-Emittter Threshold Voltage	V _{GE(th)}	V _{CE} = 5V, I _C = 300mA	4.0	-	8.0	V
入力容量 Input Capacitance	C _{ies}	V _{CE} = 10V, V _{GE} = 0V, f = 1MHz	-	18,900	-	pF
スイッチング時間 Switching Time	上昇時間 Rise Time	V _{CC} = 600V R _L = 2.0Ω R _G = 5.1Ω V _{GE} = ±15V	-	0.25	0.45	μs
	ターンオン時間 Turn-on Time		-	0.40	0.70	
	下降時間 Fall Time		-	0.25	0.35	
	ターンオフ時間 Turn-off Time		-	0.80	1.10	

フリーホイールダイオードの特性 : FREE WHEELING DIODE RATINGS & CHARACTERISTICS (T_c = 25°C)

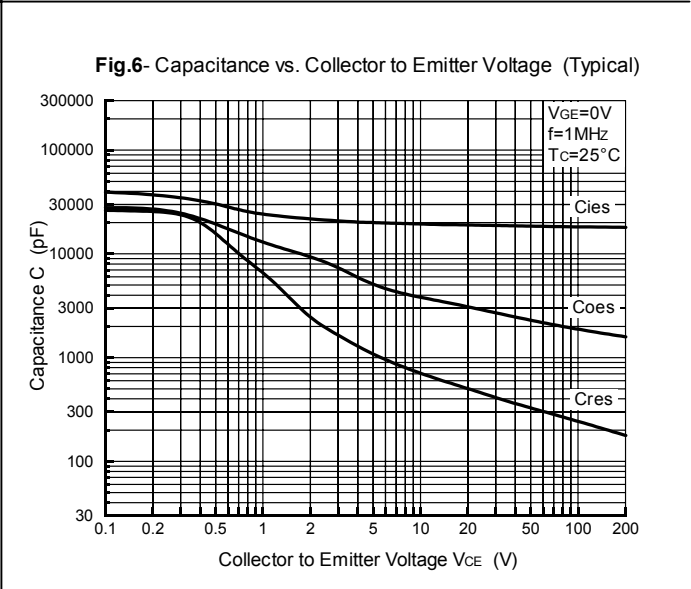
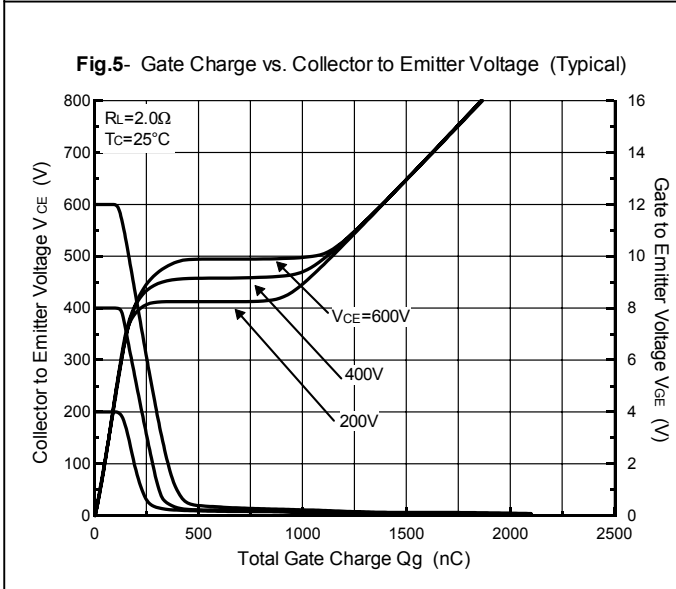
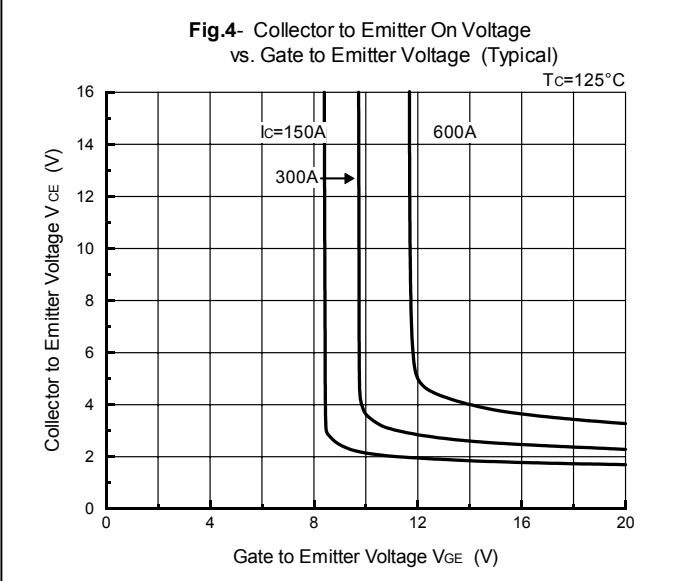
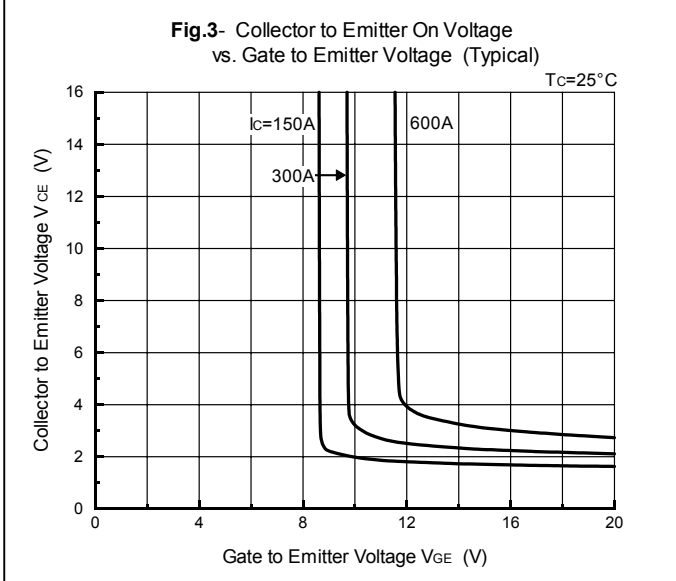
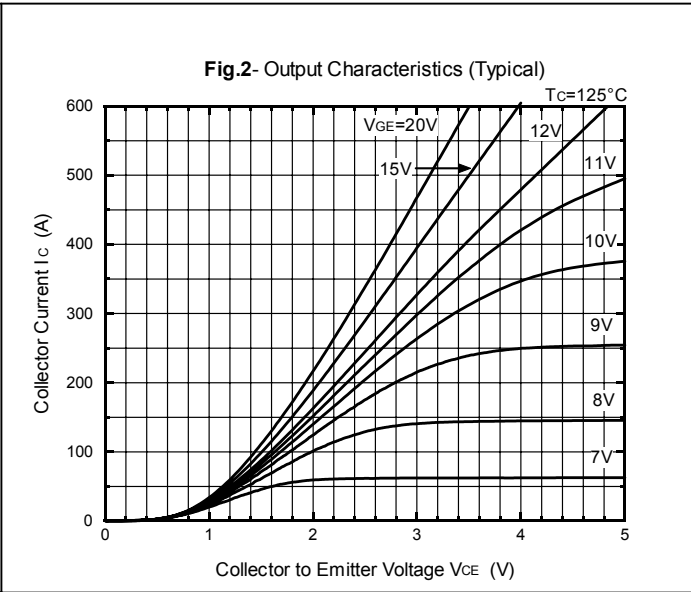
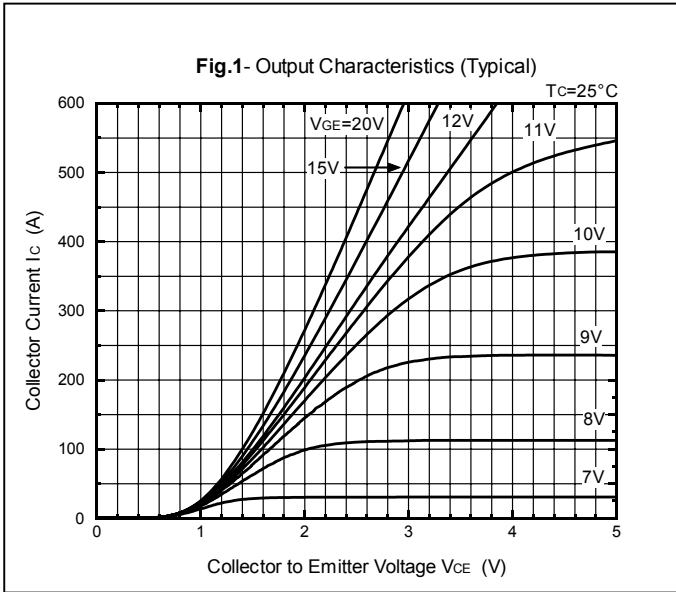
Item	Symbol	Rated Value	Unit
順電流 Forward Current	DC	I _F = 300	A
	1ms	I _{FM} = 600	

Characteristic	Symbol	Test Condition	Min.	Typ.	Max.	Unit
順電圧 Peak Forward Voltage	V _F	I _F = 300A, V _{GE} = 0V	-	2.2	2.6	V
逆回復時間 Reverse Recovery Time	t _{rr}	I _F = 300A, V _{GE} = -10V di/dt = 600A/μs	-	0.2	0.3	μs

熱的特性 : THERMAL CHARACTERISTICS

Characteristic	Symbol	Test Condition	Min.	Typ.	Max.	Unit
熱抵抗 Thermal Impedance	IGBT	Junction to Case	-	-	0.069	°C/W
	Diode		-	-	0.143	

PDMB300BS12
PDMB300BS12C



PDMB300BS12
PDMB300BS12C

Fig.7- Collector Current vs. Switching Time (Typical)

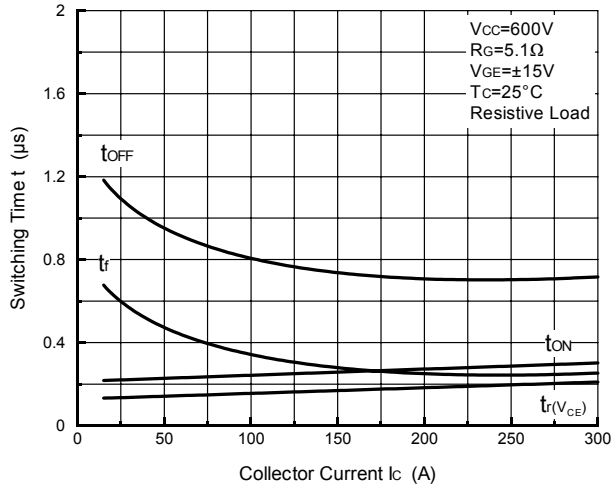


Fig.8- Series Gate Impedance vs. Switching Time (Typical)

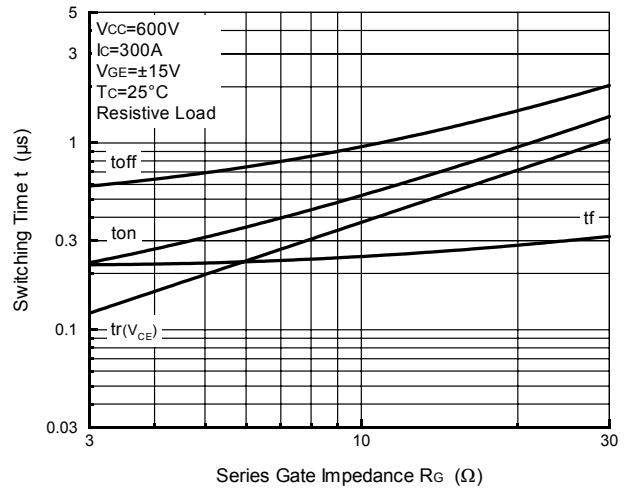


Fig.9- Collector Current vs. Switching Time

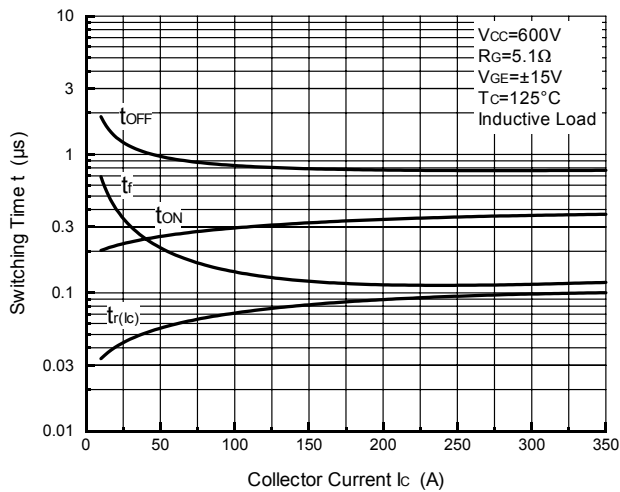


Fig.10- Series Gate Impedance vs. Switching Time

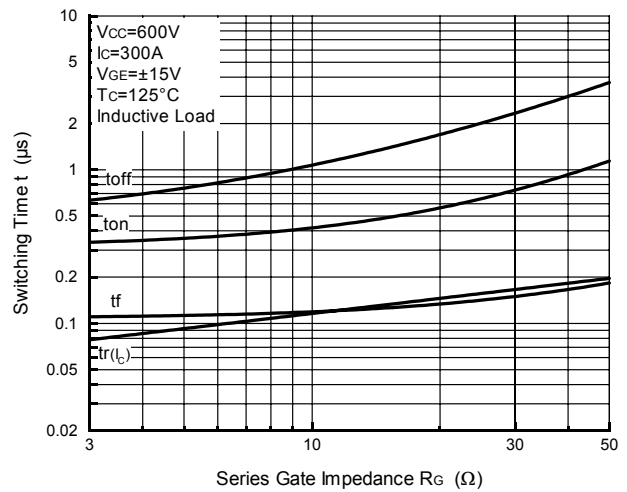


Fig.11- Collector Current vs. Switching Loss

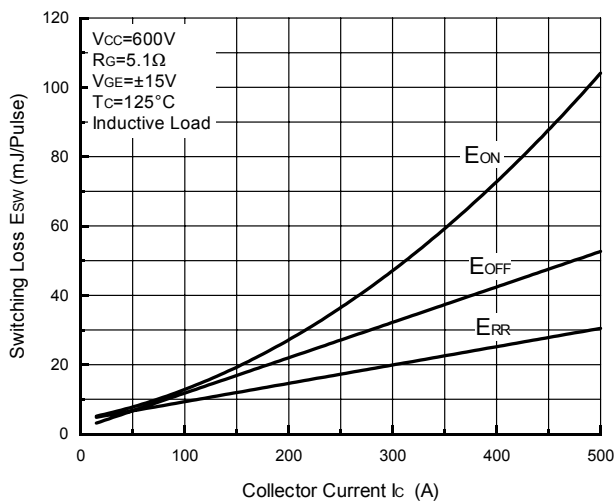
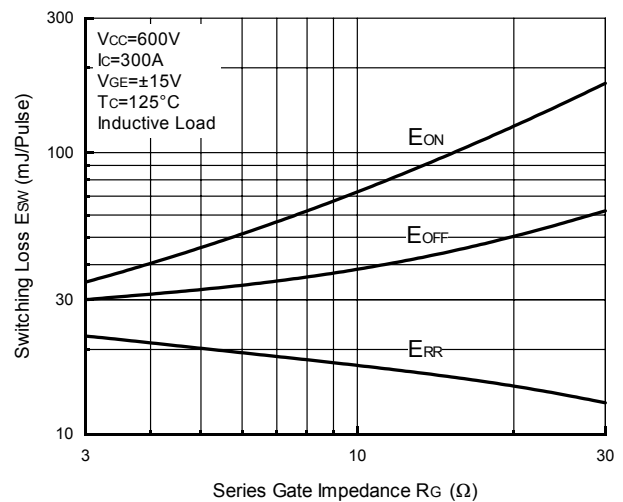


Fig.12- Series Gate Impedance vs. Switching Loss



PDMB300BS12
PDMB300BS12C

