

Conductive Polymer Aluminum Solid Capacitor (Radial Type)

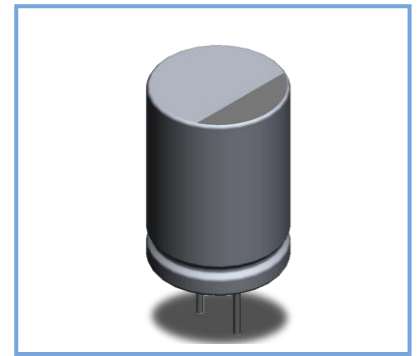


PEEA Series

MERITEK

FEATURES

- Standard radial lead type, high voltage
- Rated voltage: 2.5V_{DC} ~35V_{DC}
- Endurance: 2000hours at 105°C
- Suitable for DC-DC converters, voltage regulators and decoupling applications.



SPECIFICATIONS

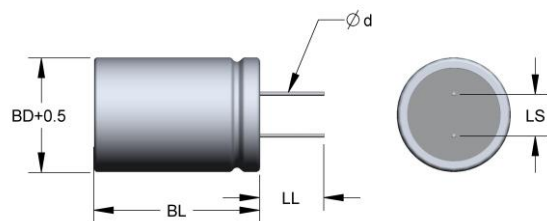
Item	Characteristic	
Category Temperature Range	-55°C ~ +105°C	
Rated Voltage Range	2.5V _{DC} ~ 35V _{DC}	
Surge Voltage	Rated voltage x 1.15V	at 105°C
Capacitance Tolerance	M=±20%	at 120Hz, 20°C
Leakage Current	Shall not exceed values shown in standard ratings	at 20°C after 2 minutes
Dissipation Factor (tan δ)	0.12 (max)	at 120Hz, 20°C
Temperature Stability	Impedance change Z(-55°C)/Z(+20°C)≤1.25 Z(+105°C)/Z(+20°C)≤1.25	at -55°C, 100kHz at +105°C, 100kHz
Endurance	Appearance: no significant damage Capacitance change: ≤ ±20% of the initial value DF(tanδ): ≤ 150% of the initial specified value ESR: ≤ 150% of the initial specified value Leakage current: ≤ the initial specified value	The specifications shall be satisfied when the capacitors are restored to 20°C after the rated voltage is applied for 2000hours at 105°C
Damp Heat, Steady State	Appearance: no significant damage Capacitance change: ≤ ±20% of the initial value DF(tanδ): ≤ 150% of the initial specified value ESR: ≤ 150% of the initial specified value Leakage current: ≤ the initial specified value	The specifications shall be satisfied when the capacitors are restored to 20°C after subjecting them to store at 60°C, 90%~95% R.H. for 1000hours, without DC applied.
Surge Voltage	Appearance: no significant damage Capacitance change: ≤ ±20% of the initial value DF(tanδ): ≤ 150% of the initial specified value ESR: ≤ 150% of the initial specified value Leakage current: ≤ the initial specified value	The capacitors shall be subjected to 1,000 cycles each consisting of charge with the surge voltages specified at 105°C for 30 seconds through a protective resistor (R=1kΩ) and discharge for 5 minutes 30 seconds

NOTE:

If any doubt arises, measure the leakage current after following voltage treatment -
Voltage treatment: DC rated voltage is applied to the capacitors for 60 minutes at 105°C

DIMENSIONS (mm)

Size code	0406	0606	0609	0809	0812	1012
BD+0.5 (max)	4.0	6.3	6.3	8.0	8.0	10.0
BL,(max)	6.0	6.0	9.0	9.0	12.0	12.0
Φd±0.05	0.45	0.45	0.6	0.6	0.6	0.6
LS±0.4	1.5	2.5	2.5	3.5	3.5	5.0
LL±0.3	3.2	3.2	3.2	3.2	3.2	3.2



Conductive Polymer Aluminum Solid Capacitor (Radial Type)



PEEA Series

MERITEK

STANDARD RATINGS

DUhBi a Vyf	Working Voltage(SV)	Capacitance	Size Code	Leakage Current	ESR ¹	Rated Ripple Current ²
	(Vdc)	(uF)		(uA)	(mΩ), max	(mArms)
PEEA2R5391M€ ĩ	2.5(2.9)	390	0606	195	20	3160
PEEA2R5821M€ ĩ	2.5(2.9)	820	0809	410	10	5230
PEEA2R5102M€ ĩ FG	2.5(2.9)	1000	0812	500	10	5230
PEEA2R5152M€ ĩ FG	2.5(2.9)	1500	1012	750	10	5560
PEEA4Ü€561M€ ĩ ĩ	4.0(4.6)	560	0809	448	12	4710
PEEA4Ü€821M€ ĩ FG	4.0(4.6)	820	1012	656	10	5560
PEEA4Ü€122M€ ĩ FG	4.0(4.6)	1200	1012	960	10	5560
PEEA6R3221M€ ĩ ĩ	6.3(7.2)	220	0606	277	15	3160
PEEA6R3331M€ ĩ ĩ	6.3(7.2)	330	0606	416	17	3390
PEEA6R3561M€ ĩ ĩ	6.3(7.2)	560	0809	705	15	4210
PEEA6R3821M€ ĩ FG	6.3(7.2)	820	1012	1033	12	5440
PEEA6R3102M€ ĩ FG	6.3(7.2)	1000	1012	1260	12	5440
PEEA6R3152M€ ĩ FG	6.3(7.2)	1500	1012	1890	12	5440
PEEA10V100M€ ĩ ĩ	10(11.5)	10	0406	300	80	700
PEEA10V271M€ ĩ FG	10(11.5)	270	0812	540	12	4710
PEEA10V471M€ ĩ FG	10(11.5)	470	1012	940	12	5440
PEEA16V470M€ ĩ ĩ	16(18.4)	47	0606	150	50	1650
PEEA16V101M€ ĩ ĩ	16(18.4)	100	0606	320	24	2490
PEEA16V101M€ ĩ ĩ	16(18.4)	100	0609	320	25	2820
PEEA16V221M€ ĩ ĩ	16(18.4)	220	0609	704	20	3160
PEEA16V271M€ ĩ FG	16(18.4)	270	0812	864	16	4070
PEEA16V331M€ ĩ FG	16(18.4)	330	1012	1056	16	4720
PEEA16V471M€ ĩ FG	16(18.4)	470	1012	1505	16	4720
PEEA16V681M€ ĩ FG	16(18.4)	680	1012	2176	16	4720
PEEA25V150M€ ĩ ĩ	25(28.7)	15	0606	75	55	1600
PEEA25V270M€ ĩ ĩ	25(28.7)	27	0606	135	40	2100
PEEA25V470M€ ĩ ĩ	25(28.7)	47	0809	235	28	3130
PEEA25V680M€ ĩ ĩ	25(28.7)	68	0809	340	24	3380
PEEA25V101M€ ĩ FG	25(28.7)	100	0812	500	22	3600
PEEA25V221M€ ĩ FG	25(28.7)	220	1012	1100	35	3100
PEEA35V220M€ ĩ ĩ	35(40.2)	22	0606	154	35	2400
PEEA35V220M€ ĩ ĩ	35(40.2)	22	0609	154	35	2600
PEEA35V330M€ ĩ ĩ	35(40.2)	33	0609	231	35	2600
PEEA35V470M€ ĩ FG	35(40.2)	47	0812	329	25	2890
PEEA35V101M€ ĩ FG	35(40.2)	100	0812	700	25	2890

NOTE:

1. Test condition: 20°C, 100kHz~300kHz
2. Test condition: 105°C, 100kHz