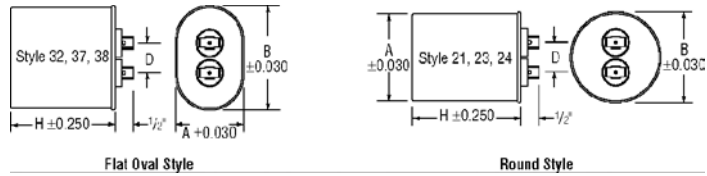


AC Metallized Polypropylene Motor Run Capacitors



- Features**
- ▶ Internal Protector
 - ▶ Environmentally Safe
 - ▶ Long Life
 - ▶ Double Rolled Seams

- ▶ Light Weight
- ▶ Small Size
- ▶ High Reliability

- Applications**
- ▶ Lighting
 - ▶ Motors
 - ▶ Power Factor Correction

- ▶ Phase Shifting
- ▶ Air Conditioning
- ▶ Refrigeration

Metallized polypropylene film dielectric capacitors offer a new option for AC applications. All devices have metal cases and four prong quick disconnect terminals.* These capacitors pack the same capacitance and voltage capabilities of a conventional paper capacitor into a smaller case of considerably lighter weight. In addition, these parts have extremely low dissipation factors. They offer high reliability and long life and meet EIA Standard RS-456 characteristic "E". Allow 1/2" clearance above the terminals on fluid filled capacitors for interrupter operation.

*Note: 21 style round unit has 3 prongs.

Flat Oval Style				
Style	A	B	D	Industry Type
32	1 5/16	2 5/32	1 3/16	1 1/4 F.O.
37	1 29/32	2 29/32	1 3/16	1 3/4 F.O.
38	1 31/32	3 21/32	1 3/16	2 F.O.

Round Containers				
Style	A	B	D	Industry Type
21	1 3/4	1 7/8	1 3/16	1 3/4 Round
23	2	2 1/8	1 3/16	2 Round
24	2 1/2	2 5/8	1 3/16	2 1/2 Round

Stock No.	Mfr.'s Type	Cap. µF	VAC	Base Style	H (In.)	EACH		
						1-24	25-99	100-Up
852-1300	32FD3703	3.0	370	32	2.13	12.37	11.34	10.47
852-1302	32FD3704	4.0	370	32	2.13	12.76	11.70	10.80
852-1304	32FD3705	5.0	370	32	2.38	11.13	10.20	9.42
852-1306	32FD3706	6.0	370	32	2.38	11.50	10.54	9.73
852-1308	32FD3707	7.5	370	32	2.38	11.87	10.88	10.04
852-1310	32FD3710	10.0	370	32	2.63	13.35	12.24	11.30
852-1312	37FB4410	10.0	440	37	2.63	15.95	14.62	13.50

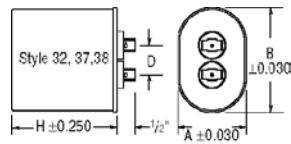
Stock No.	Mfr.'s Type	Cap. µF	VAC	Base Style	H (In.)	EACH		
						1-24	25-99	100-Up
852-1314	21FD3715	15.0	370	21	2.63	15.95	14.62	13.50
852-1316	21FD3717	17.5	370	21	2.63	17.06	15.64	14.44
852-1318	21FD3720	20.0	370	21	2.63	18.32	16.80	15.50
852-1320	21FD3725	25.0	370	21	3.00	19.44	17.82	16.45
852-1322	21FD3730	30.0	370	21	3.00	21.14	19.38	17.89
852-1324	21FD3735	35.0	370	21	3.75	22.25	20.40	18.83
852-1326	23FD3750	50.0	370	23	3.75	29.67	27.20	25.11
852-1327	23FD3760	60.0	370	23	3.75	35.98	32.98	30.44
852-1331	24FD3770	70.0	370	24	3.75	37.05	33.97	31.35

AC Power Supply Capacitor

- Features**
- ▶ Internal Protector
 - ▶ Low Dissipation Factor
 - ▶ Long Life and High Reliability
 - ▶ Self Healing
 - ▶ Environmentally Safe
 - ▶ Small Size

- Applications**
- ▶ Lighting
 - ▶ Power Supplies
 - ▶ Motor Run
 - ▶ Power Factor Correction
 - ▶ Phase Conversion

Metallized paper-foil with polypropylene dielectric capacitors are suitable for use in ferroresonant power supplies as well as other AC continuous duty applications. They are supplied in the same rigid metal cases as the AC motor series, have biodegradable oil and are UL recognized and CSA certified.



Flat Oval Style				
Style	A	B	D	Industry Type
32	1 5/16	2 5/32	1 3/16	1 1/4 F.O.
37	1 29/32	2 29/32	1 3/16	1 3/4 F.O.
38	1 31/32	3 21/32	1 3/16	2 F.O.

Stock No.	Mfr.'s Type	Cap. µF	VAC	Base Style	H (In.)	EACH		
						1-24	25-99	100-Up
852-1332	32KB6601A	1	660	32	2.38	23.14	21.22	19.58
852-1334	32KB6602A	2	660	32	2.38	19.73	18.09	16.70
852-1336	32KE6603A	3	660	32	2.38	22.04	20.20	18.64
852-1338	32KE6604A	4	660	32	2.38	22.55	20.67	19.08
852-1340	32KE6605A	5	660	32	2.88	22.92	21.01	19.40
852-1342	32KE6606A	6	660	32	2.88	33.16	30.40	28.06
852-1344	32KD6607A	7	660	32	3.38	34.72	31.82	29.38
852-1346	32KD6608A	8	660	32	3.88	31.60	28.97	26.74
852-1348	37KD6610A	10	660	37	2.88	32.05	29.38	27.12
852-1350	37KD6615A	15	660	37	3.38	44.45	40.76	37.62
852-1352	38KC6620A	20	660	38	3.38	50.33	46.15	42.59
852-1354	38KC6625A	25	660	38	3.88	61.72	56.59	52.22
852-1356	38KD6630A	30	660	38	4.25	58.40	53.53	49.41

PSU Series AC Motor Start Capacitors

- ▶ For Motor Starting and Other Intermittent Duty AC Applications
- ▶ Dual Quick Connect Terminals
- ▶ Rugged Bakelite Case
- ▶ Compact Size; Easily Mounted
- ▶ Meets EIA RS-463 Type 2



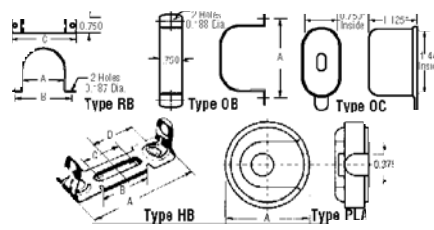
Temperature: Operating — -40°C to +65°C; Storage — -55°C to +85°C.
Voltage Range: 110 to 330 VAC. Capacitance Range: 21 µF to 1280 µF.
Operating Frequency: 50 to 60 Hz. Power Factor: 10% max. (12% ≤30 µF).

Stock No.	Mfr.'s Type	Cap. µF	Dia. (In.)	Length (In.)	EACH	
					1-24	25-49
852-3720	PSU8815	88-106	1.4375	2.750	5.23	4.65
852-3722	PSU10815	108-130	1.4375	2.750	5.38	4.78
852-3728	PSU14515	145-174	1.4375	2.750	5.61	4.99
852-3730	PSU16115	161-193	1.4375	2.750	5.78	5.14
852-3732	PSU18915A	189-227	1.4375	2.750	7.30	5.82
852-3740	PSU27015A	270-324	1.4375	3.375	7.21	6.55
852-3744	PSU40015	400-480	1.8125	3.375	8.94	8.12
852-3750	PSU46015A	460-552	1.8125	3.375	9.53	8.65
852-3755	PSU54015A	540-648	1.8125	3.375	16.63	15.11
852-3752	PSU64015B	540-648	1.8125	3.375	11.95	10.31
852-3760	PSU100015A	1000-1200	2.0625	4.375	17.24	15.82

220/250 Volts						
Stock No.	Mfr.'s Type	Cap. µF	Dia. (In.)	Length (In.)	1-24	25-49
852-3762	PSU6435	64-77	1.4375	3.375	8.64	7.85
852-3766	PSU10835A	108-130	1.8125	3.375	10.63	9.63
852-3774	PSU16135A	161-193	2.0625	4.375	16.25	14.92
852-3780	PSU23335A	233-280	2.0625	4.375	19.30	17.81
852-3782	PSU27035A	270-324	2.0625	4.375	17.77	16.30

330 Volts						
Stock No.	Mfr.'s Type	Cap. µF	Dia. (In.)	Length (In.)	1-24	25-49
852-3784	PSU2530	25-30	1.4375	3.375	8.22	7.52
852-3786	PSU3030	30-36	1.4375	3.375	8.64	7.89
852-3788	PSU3630	36-43	1.4375	3.375	9.15	8.32
852-3792	PSU6430	64-77	1.8125	3.375	11.20	10.21

Mounting Accessories — NEW —



Type RB Cylindrical Mounting Clamp. This clamp has a galvanized finish and is designed for use with the round base style motor run capacitor (MPF). Material Thickness: 0.035".

Stock No.	Mfr.'s Type	Base Style	Dimensions (In.)			EACH		
			A*	B	C	1-49	50-99	100-Up
852-3701	RB175	21	1.75	2.50	2.875	1.50	1.27	1.18
852-3703	RB200	23	2.00	2.75	3.125	1.33	1.12	1.04
852-3705	RB250	24	2.50	3.25	3.625	1.44	1.22	1.13

*Nom. Diameter.

Type OB Oval Mounting Clamp. This clamp has a galvanized finish and is designed for use with the flat oval base style motor run capacitor (MPF/MSF). Material Thickness: 0.036".

Stock No.	Mfr.'s Type	Base Style	Dimensions (In.)				EACH		
			Base Size	A	1-49	50-99	100-Up		
852-3707	OB2	32	1 5/16 × 2 5/32	2 9/16	1.35	1.14	1.06		
852-3709	OB4	37	1 29/32 × 2 29/32	3 9/16	1.39	1.17	1.09		
852-3711	OB3	38	1 31/32 × 3 21/32	4 1/16	1.45	1.22	1.14		

Type OC Neoprene Terminal Insulator. For use on capacitor types MPF/MSF, this neoprene terminal insulator or "boot", is used to insulate and protect the terminal area of single section units only. Material is classified 94V-1 when tested per UL94. 852-3713. OC1.....EACH 2.55

Type HB Horizontal Mounting Bracket. HB brackets are used with PLA end caps. The bracket is assembled to the motor or any suitable surface by two screws in line at any convenient position within the center-to-center dimension (C) shown in the chart. Material: 0.042 spring steel with black parkerized finish.

Stock No.	Mfr.'s Type	Dimensions (In.)				EACH		
		A	B	C*	D	1-49	50-99	100-Up
852-2501	HB2	3 3/8	1 1/4	7/8	1.258	3.15	2.77	2.63
852-3700	HB4	4 7/8	1 1/2	1 1/2	1 37/64	2.76	2.44	2.30

*C dimension=max. mounting hole center. Use 10-32" flat head screws.

PLA End Caps. PLA end caps are usually used with HB type brackets, with wire hole away from bracket. For off motor mounting. Diameter A: 17/16". 852-3712. PLA3.....EACH 1.11 100-Up.....EACH 1.07