

- UNIVERSAL INPUT
- ONLY 6.0" X 3.5" X 1.77"

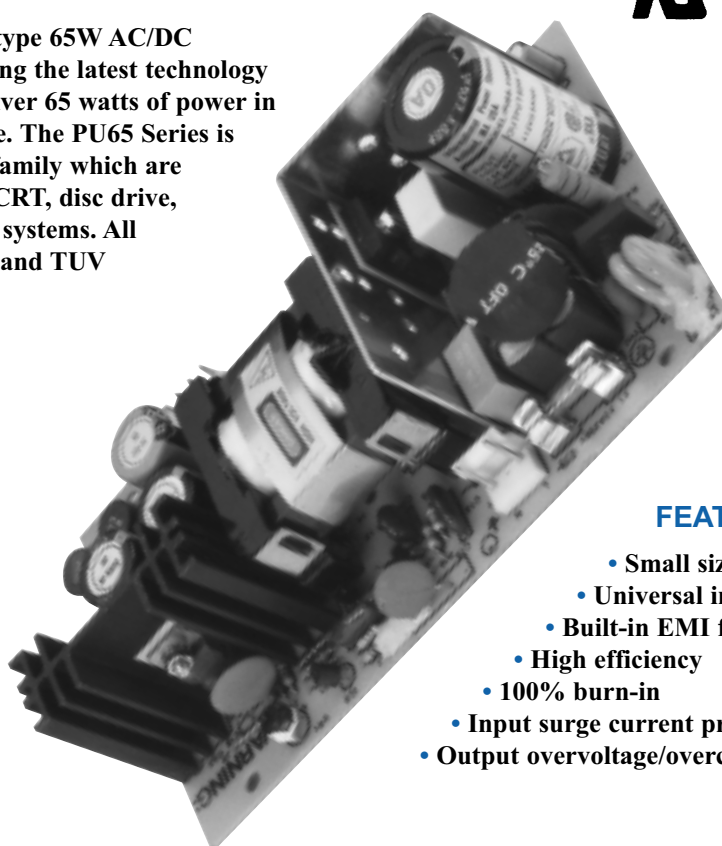
65 WATT

**SWITCHING
POWER SUPPLY**



DESCRIPTION

The PU65 Series are open PCB type 65W AC/DC switching power supplies. Utilizing the latest technology and components, these units deliver 65 watts of power in only a 6.0"x 3.5"x 1.77" package. The PU65 Series is an 85-264 VAC universal input family which are ideally suited for use in today's CRT, disc drive, and small microprocessor based systems. All units are approved to UL, CSA, and TUV safety standards.



FEATURES

- Small size 6.0" x 3.5" x 1.77"
- Universal input (no jumpers required)
- Built-in EMI filter
- High efficiency
- 100% burn-in
- Input surge current protection
- Output overvoltage/overcurrent protection

OUTPUT VOLTAGE/CURRENT RATINGS CHART

Model	Output #1				Output #2				Output #3				Output #4				Maximum Output Power
	Vnom	Imin	Imax	Tol.	Vnom	Imin	Imax	Tol.	Vnom	Imin	Imax	Tol.	Vnom	Imin	Imax	Tol.	
PU65-10	5V	0.0A	10A	2%	N/A				N/A				N/A				50W
PU65-12	12V	0.0A	5.5A	1%	N/A				N/A				N/A				65W
PU65-13	15V	0.0A	4.5A	1%	N/A				N/A				N/A				65W
PU65-14	24V	0.0A	3.0A	1%	N/A				N/A				N/A				65W
PU65-25	+5V	1.0A	6.0A	3%	+24V	0.3A	2.0A	5%	N/A				N/A				65W
PU65-30	+5V	1.0A	6.0A	3%	+12V	0.5A	3.0A	5%	-5V	0.1A	0.5A	10%	N/A				65W
PU65-31	+5V	1.0A	6.0A	3%	+12V	0.5A	3.0A	5%	-12V	0.1A	0.5A	10%	N/A				65W
PU65-32	+5V	1.0A	6.0A	3%	+15V	0.4A	3.0A	5%	-15V	0.1A	0.5A	10%	N/A				65W
PU65-40	+5V	1.0A	6.0A	3%	+12V	0.5A	3.0A	5%	-12V	0.1A	0.5A	10%	-5V	0.1A	0.5A	10%	65W

NOTE: All multi-output units may be operated at no-load without damage. At no-load, output tolerance increases to 10%

GENERAL SPECIFICATIONS

All specifications are typical at nominal line, full load, and 25°C.

Efficiency:	70% minimum at 65W output
Hold-up time:	10 msec minimum
Line regulation:	±0.5% maximum at full load
Inrush current:	15 amps @ 115 VAC, or 30 amps @ 230 VAC at 25°C cold start
Withstand voltage:	3000 VAC from input to output 1500 VAC from input to ground
Insulation resistance:	10 Mohm minimum from output to ground
Operating temperature:	0 to 70°C*
Storage temperature:	-10 to +85°C
Mean time between failure:	100,000 hours at full load at 25°C ambient
EMI requirements:	Meets conduction limits of a) FCC 20780 Level B b) CISPR 22 (EN 55022) Level B
Safety requirements:	Approved to: a) UL 1950 b) CSA C22.2 No. 234 c) IEC 950 (per TUV)

INPUT SPECIFICATIONS

Input voltage:	85 to 264 VAC/115-280VDC
Input frequency:	47 to 440 Hz
Input current:	1.6A (rms) for 115 VAC 1.0A (rms) for 230 VAC

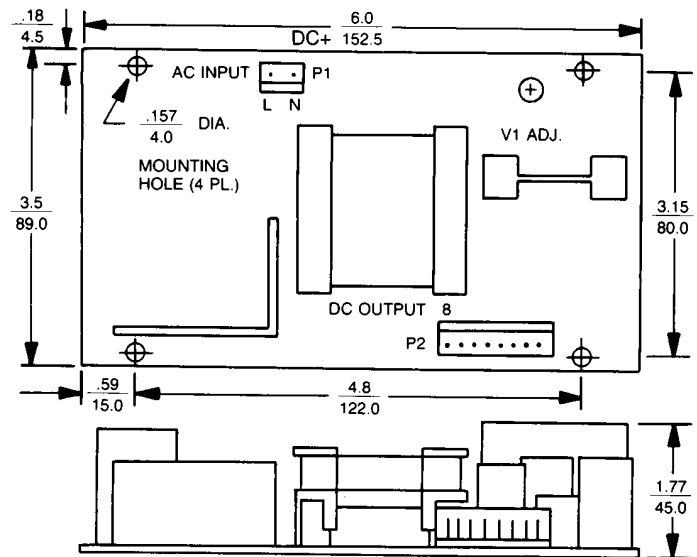
OUTPUT SPECIFICATIONS

Output voltage:	See Rating Chart
Output current:	See Rating Chart
Output power range:	0 to 65 watts
Ripple and noise:	1% peak to peak maximum
Overvoltage protection:	Provided on output #1 only; set at 112-132% of its nominal output voltage
Overcurrent protection:	All outputs protected to short circuit conditions
Temperature Coefficient:	All outputs ±0.04%/°C maximum

* Derate linearly from 100% load at 50°C to 50% load at 70°C

MECHANICAL SPECIFICATIONS

- Dimensions shown in $\frac{\text{inch}}{\text{mm}}$
- Tolerance $\frac{.02}{.5}$ maximum
- Input connector mates with Molex housing 09-50-3031 and Molex 2878 series crimp terminal
- Output connector mates with Molex housing 09-50-3081 and Molex 2878 series crimp terminal.
- Weight: 380 grams approx.



PIN CHART

Model	PIN	1	2	3	4	5	6	7	8
PU65-10, PU65-12 PU65-13, PU65-14		OUTPUT #1	OUTPUT #1	OUTPUT #1	OUTPUT #1	RETURN	RETURN	RETURN	RETURN
PU65-25		OUTPUT #1	OUTPUT #1	COMMON	COMMON	OUTPUT #2	OUTPUT #2	N.C.	N.C.
PU65-30, PU65-31 PU65-32		OUTPUT #1	OUTPUT #1	COMMON	COMMON	OUTPUT #2	OUTPUT #2	OUTPUT #3	N.C.
PU65-40		OUTPUT #1	OUTPUT #1	COMMON	COMMON	OUTPUT #2	OUTPUT #2	OUTPUT #3	OUTPUT #4



Your Source of Power ...

260 Hopping Brook Road, Holliston, MA 01746
TEL: (508) 429-4440 FAX: (800) 226-2100
<http://www.intlpower.com>