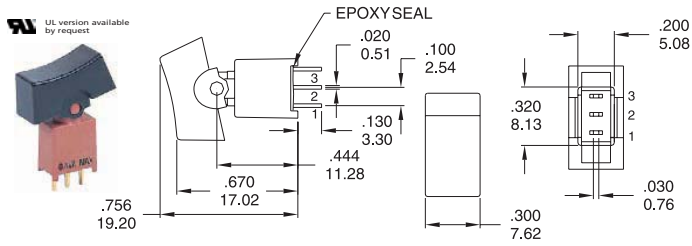


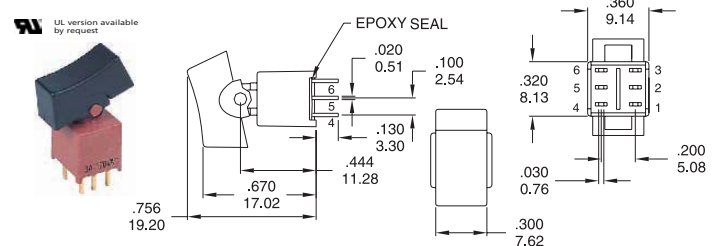
# Rocker Switches

## Sealed Sub-Miniature Rocker Switches

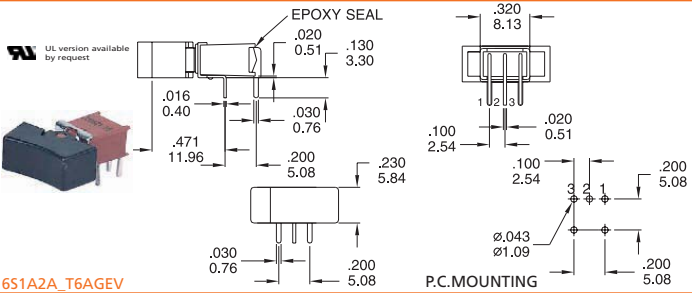
## RK16 Series



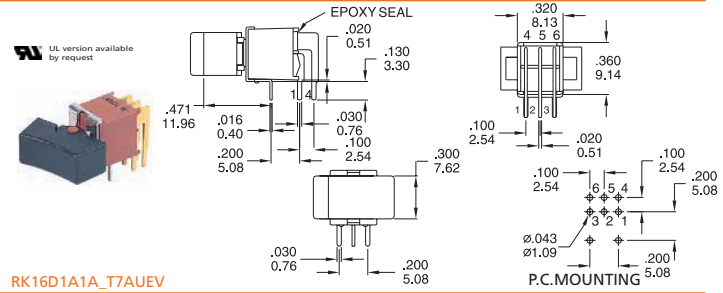
RK16S1A2A\_T2AUEV



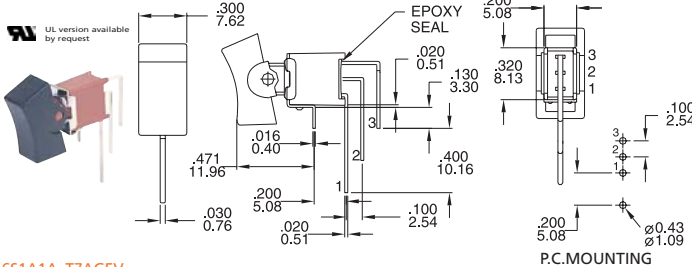
RK16D1A1A\_T2AUEV



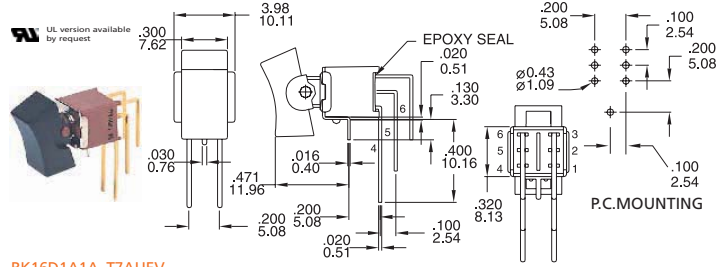
RK16S1A2A\_T6AGEV



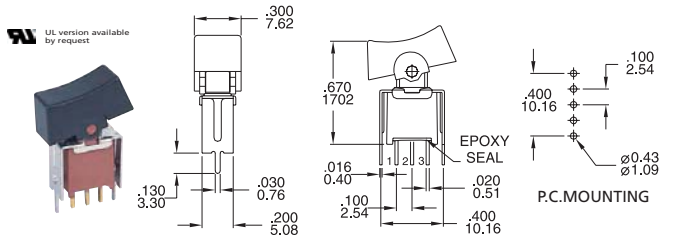
RK16D1A1A\_T7AUEV



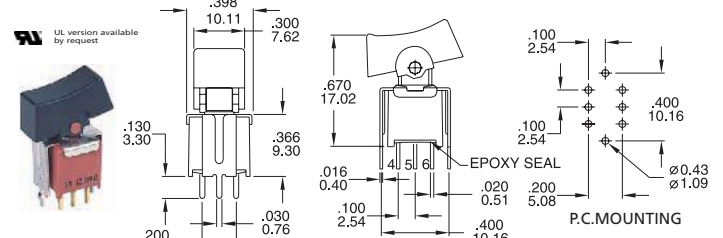
RK16S1A1A\_T7AGEV



RK16D1A1A\_T7AUEV



RK16S1A1A\_VS2AUEV



RK16D1A1A\_VS2AUEV

### How to order:

RK16

#### 1 POLES & SWITCH FUNCTION:

- S1 SP ON-NONE-ON
- S2 SP ON-NONE-MOM
- S3 SP ON-OFF-ON
- S4 SP MOM-OFF-MOM
- S5 SP ON-OFF-MOM
- S6 SP OFF-NONE-ON
- D1 DP ON-NONE-ON
- D2 DP ON-NONE-MOM
- D3 DP ON-OFF-ON
- D6 DP ON-ON-ON

#### 2 ACTUATOR:

- A1 Rocker, 7.62mm wide
- A2 Rocker, 5.84mm wide

#### 3 ACTUATOR COLOR

- |               |          |         |
|---------------|----------|---------|
| A Black(Std.) | H Grey   | B White |
| F Green       | D Orange | C Red   |
| E Yellow      | K Brown  | G Blue  |

#### 4 ACTUATOR MARKING

- |   |   |
|---|---|
| A | E |
| B | F |
| C | G |
| D | H |

#### 5 TERMINATIONS

- T1 Solder Lug
- T2 PC Thru Hole
- T5 Wire Wrap
- T6 PC Thru Hole Right Angle
- T6N PC Thru Hole Right Angle Snap-in
- T7 PC Thru Hole, Vertical Right Angle
- T7N PC Thru Hole, Vertical Right Angle Snap-in
- VS2 V-Bracket, Height=8.94mm
- V2N Snap-in V-Bracket, Height=8.94mm

#### 6 CONTACT MATERIALS :

- AG Silver
- AU Gold
- UT Gold, Tin-Lead
- GT Silver, Tin-Lead
- UG Gold over Silver
- UGT Gold over Silver, Tin-Lead

#### 7 SEAL:

- E Epoxy

#### 8 ROHS & LEAD FREE

- V RoHS Compliant & Lead Free

### General Specifications:

#### MATERIALS

- » Movable Contact & Fixed Terminals:  
AG, GT, UG & UGT: Silver plated over copper alloy  
AU & UT: Gold over nickel plated over copper alloy

#### MECHANICAL

- » Operating Temperature: -30°C to +85°C
- » Mechanical Life: 30,000 cycles

#### CONTACT RATING

- » AG, GT, UG & UGT: 3A120VAC/28VDC  
1A250VAC
- » AU & UT: 0.4VA max. 20V max. (AC/DC)

#### ELECTRICAL

- » Contact Resistance: 20mΩ max. initial @ 2-4VDC  
100mA for silver & gold plated contacts
- » Insulation Resistance: 1,000MΩ min.

# Rocker Switches

## Sealed Sub-Miniature Rocker Switches

## RK16 Series

NO. POLES	MODEL NO.	SWITCH FUNCTION			CONNECTED TERMINALS / SCHEMATIC		
		POS.1	POS.2	POS.3	POS.1	POS.2	POS.3
SP	RK16S1	ON	NONE	ON	2-3 	N/A	2-1 
	RK16S2	ON	NONE	MOM		2(COMM) 	
	RK16S3	ON	OFF	ON			
	RK16S4	MOM	OFF	MOM			
	RK16S5	ON	OFF	MOM			
	RK16S6	OFF	NONE	ON	OPEN	N/A	3-1
DP	RK16D1	ON	NONE	ON	2-3,5-6 	N/A	2-1,5-4 
	RK16D2	ON	NONE	MOM		2(COMM) 5 	
	RK16D3	ON	OFF	ON			
	RK16D6	ON	ON	ON	2-3,5-6	2-3,5-4	2-1,5-4

### ACTUATOR OPTIONS

<b>A1</b> PANEL MOUNTING	<b>A2</b> PANEL MOUNTING

### TERMINAL OPTIONS

<b>SP</b>	<b>DP</b>	<b>SP</b>	<b>DP</b>
<b>T2</b> P.C. THRU-HOLE		<b>T5</b> WIRE WRAP	

OPTION CODE	DIM. 'A'
SP-T5	.614(15.60)
DP-T5	.236(6.00)

### SNAP-IN TERMINATION OPTIONS

<b>T6N</b>	<b>T7N</b>	<b>V2N</b>