



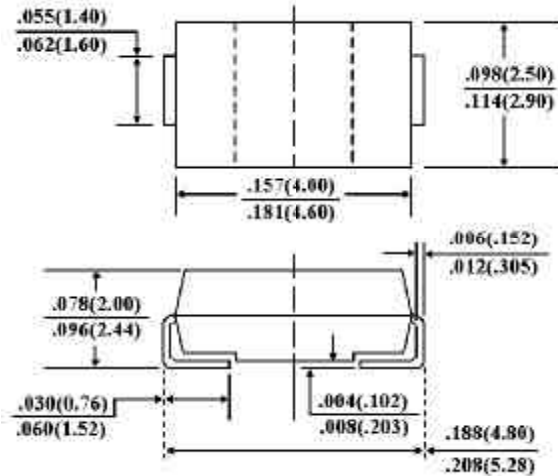
RS1A THRU RS1K

SURFACE MOUNT FAST SWITCHING RECTIFIER
 VOLTAGE - 50 to 800 Volts CURRENT - 1.0 Ampere

FEATURES

- For surface mounted applications
- Low profile package
- Built-in strain relief
- Easy pick and place
- Fast recovery times for high efficiency
- Plastic package has Underwriters Laboratory Flammability Classification 94V-0
- Glass passivated chip junction
- High temperature soldering: 260 °C/10 seconds at terminals

SMA/DO-214AC



Dimensions in inches and (millimeters)

MECHANICAL DATA

- Case: JEDEC DO-214AC molded plastic
- Terminals: Solder plated, solderable per MIL-STD-750, Method 2026
- Polarity: Indicated by cathode band
- Standard packaging: 12mm tape (EIA-481)
- Weight: 0.002 ounce, 0.064 grams

MAXIMUM RATINGS AND ELECTRICAL CHARACTERISTICS

Ratings at 25 °C ambient temperature unless otherwise specified.

Resistive or inductive load.

For capacitive load, derate current by 20%.

	SYMBOLS	RS1A	RS1B	RS1D	RS1G	RS1J	RS1K	UNITS
Maximum Recurrent Peak Reverse Voltage	V_{RRM}	50	100	200	400	600	800	Volts
Maximum RMS Voltage	V_{RMS}	35	70	140	280	420	560	Volts
Maximum DC Blocking Voltage	V_{DC}	50	100	200	400	600	800	Volts
Maximum Average Forward Rectified Current, at $T_L=90$ °C	$I_{(AV)}$	1.0						Amps
Peak Forward Surge Current 8.3ms single half sine-wave superimposed on rated load(JEDEC method)	I_{FSM}	30.0						Amps
Maximum Instantaneous Forward Voltage at 1.0A	V_F	1.30						Volts
Maximum DC Reverse Current $T_A=25$ °C	I_R	5.0						µgA
At Rated DC Blocking Voltage $T_A=125$ °C		150						
Maximum Reverse Recovery Time (Note 1) $T_J=25$ °C	T_{RR}	150				250	500	nS
Typical Junction capacitance (Note 2)	C_J	12						pF
Maximum Thermal Resistance (Note 3)	$R_{\theta JK}$	32						°C/W
Operating and Storage Temperature Range	T_J, T_{STG}	-50 to +150						°C

NOTES:

- Reverse Recovery Test Conditions: $I_F=0.5A$, $I_R=1.0A$, $I_{rr}=0.25A$
- Measured at 1 MHz and Applied reverse voltage of 4.0 volts
- 8.0mm² (.013mm thick) land areas

RATING AND CHARACTERISTIC CURVES

RS1A THRU RS1K

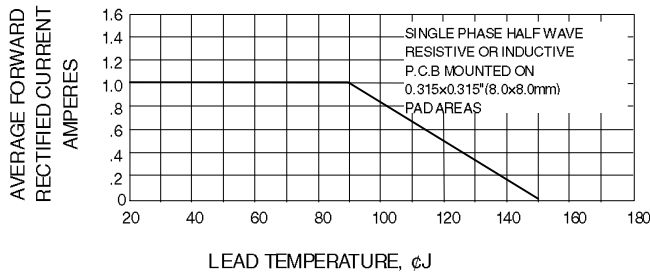


Fig. 1-FORWARD CURRENT DERATING CURVE

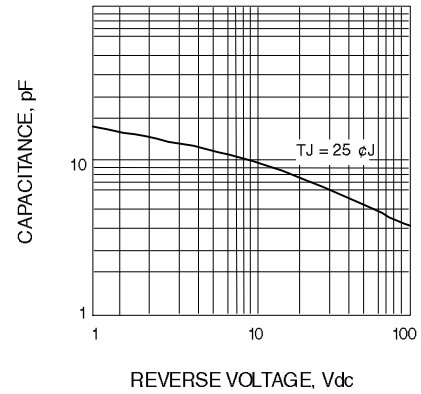


Fig. 2-TYPICAL JUNCTION CAPACITANCE

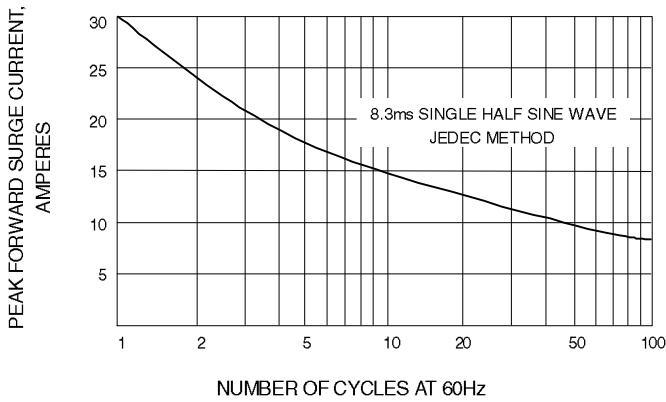


Fig. 3-PEAK FORWARD SURGE CURRENT

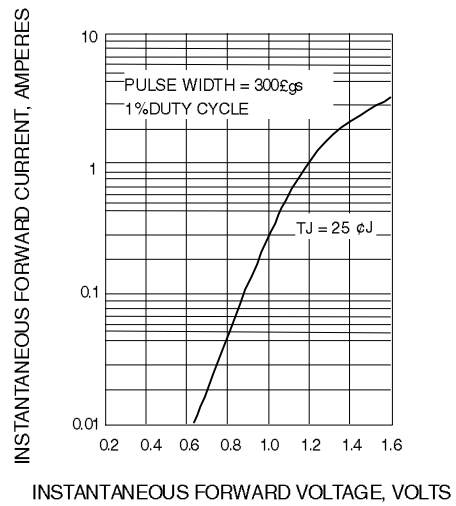
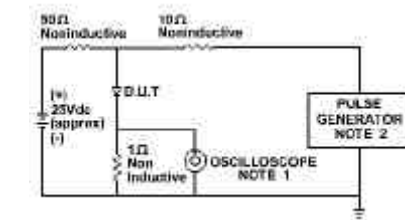


Fig. 4-TYPICAL INSTANTANEOUS FORWARD CHARACTERISTICS



NOTE:1. Rise Time = 7ns max.
 Input Impedance = 1 megohm. 22pF
 2. Rise Time = 10ns max.
 Source Impedance = 50 Ohms

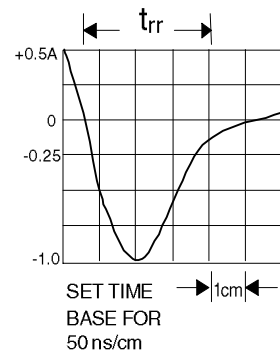


Fig. 5-REVERSE RECOVERY TIME CHARACTERISTIC AND TEST CIRCUIT DIAGRAM