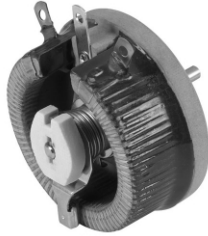
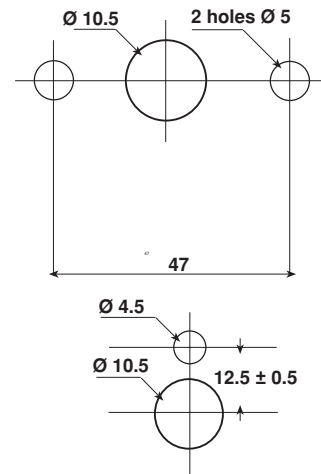
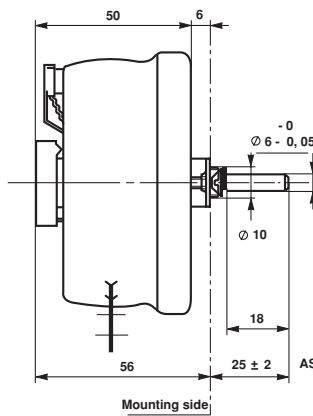
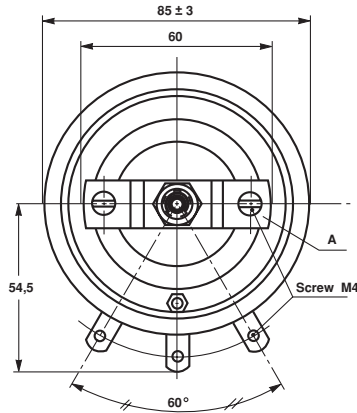


## Wirewound Rheostat/Potentiometer


**FEATURES**

- 100 Watt at 25°C
- 70 Watt at 25°C
- CCTU 05-03B (PA5)
- Vitreous style RT100
- Lacquered style RTE100

**DIMENSIONS** in millimeters

**RT100-PA5**
**PANEL CUT OUT DETAILS**

**MECHANICAL SPECIFICATIONS**

<b>Mechanical Protection</b>	RT100 vitreous RTE100 lacquered
<b>Mechanical Travel</b>	300° ± 5°
<b>Operating Torque</b>	4 to 20 Ncm
<b>End Stop Torque</b>	100 Ncm
<b>Unit Weight</b>	400 g

**ENVIRONMENTAL SPECIFICATIONS**

<b>Temperature Range</b>	RT100 – 55°C + 320°C RTE100 – 55°C + 220°C
<b>Climatic Category</b>	CCTU 454 CEI 55/200/56

**ELECTRICAL SPECIFICATIONS**

Parameter	RT100	RTE100
<b>Ohmic Range</b>	1Ω to 15kΩ	> 15kΩ to 54kΩ
<b>Tolerance Standard</b>	± 10%	
<b>Power Rating</b>	100 W at 25°C	70 W at 25°C
<b>Variation Law</b>	Standard	linear
	On request	sectorial winding
<b>Limiting Element Voltage</b>	RT100	850V
	RTE100	800V
<b>Dielectric Strength</b>	1500VRMS	
<b>Insulation Resistance</b>	10 <sup>3</sup> MΩ(500Vcc)	

## LOCKING DEVICE

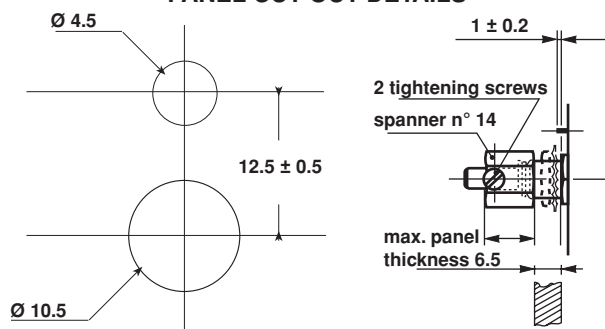
Supplied as an option the spindle locking device can only be fitted to units with control mounting and locating peg.

The part A is removed (see drawing).

The available spindle length is according to the panel thickness.

Order reference : DBA6.

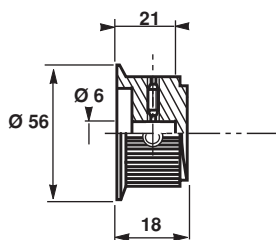
### PANEL CUT OUT DETAILS



SPINDLES			
Ø mm	DISTANCE TO MOUNTING PLATE mm	SCREW DRIVER SLOT	CODE
6	22	WITHOUT	AD
		WITH	ADF
	25	WITH	ASF
6	50	WITHOUT	AL
	25	WITHOUT	AS

For any special requirement on request : spindle flats, etc. Please supply detailed drawing.

### COMMAND KNOB 41JF (OPTION)



## MARKING

SFERNICE trademark, series, style, ohmic value (in  $\Omega$  or k $\Omega$ ), tolerance (in %), maximum current in A, manufacturing date

### ORDERING PROCEDURE

VITREOUS LACQUERED	<b>RT</b> <b>RTE</b>	<b>100</b>	<b>L</b>	<b>AL</b>	<b>6.8k<math>\Omega</math></b>	<b>± 10%</b>			
	SERIES	STYLE	SPINDLE LOCKING DEVICE Optional	VARIATION LAW	SPECIAL DESIGN Method N° Optional	WINDING Optional	SPINDLE (Code) for special spindles please supply detailed drawing	OHMIC VALUE	TOLERANCE
	<b>ACC</b>	<b>41JF</b>	<b>CG78</b>	<b>XXX</b>					
OPTIONS	MODEL	KNOB	DIAL	OTHER SPECIAL REQUIREMENTS					

### PARTICULAR CHARACTERISTICS

NOMINAL RESISTANCE $\Omega$	MAX. SERVICE VOLTAGE V	MAX. CURRENT THROUGH WIPER A
1	10	10
15	12.2	8.16
2.2	14.8	6.74
3.3	18.2	5.50
4.7	21.7	4.61
6.8	26.1	3.84
10	31.6	3.16
15	38.7	2.58
22	46.9	2.13
33	57.4	1.74
47	68.6	1.46
68	82.5	1.2
100	100	1
150	122	0.816
220	148	0.674
330	182	0.550
470	217	0.461
680	261	0.384
1k	316	0.316
1.5k	387	0.258
2.2k	469	0.213
3.3k	574	0.174
4.7k	686	0.146
6.8k	825	0.121
10k	850	0.085
15k	850	0.057

### DIAL CG78 (OPTION)

