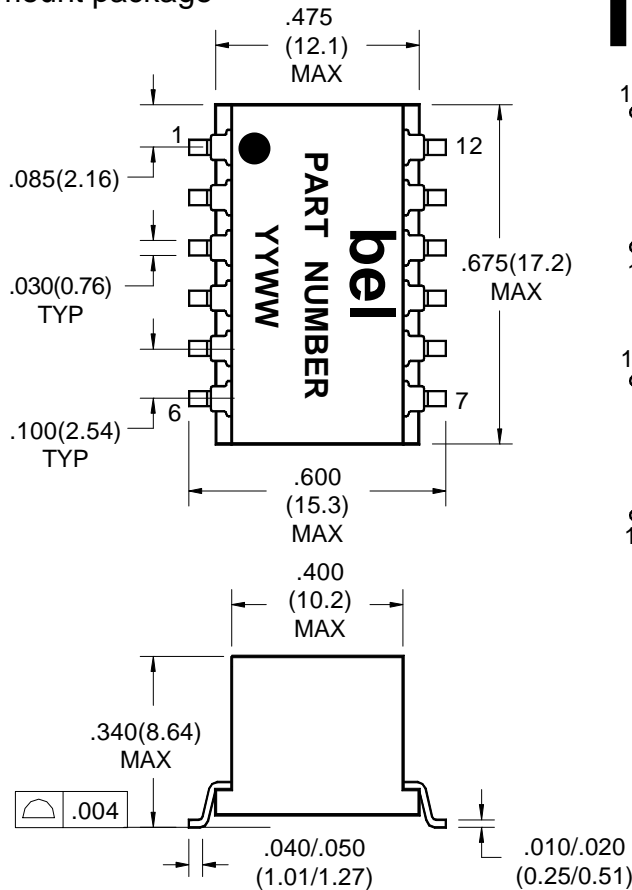


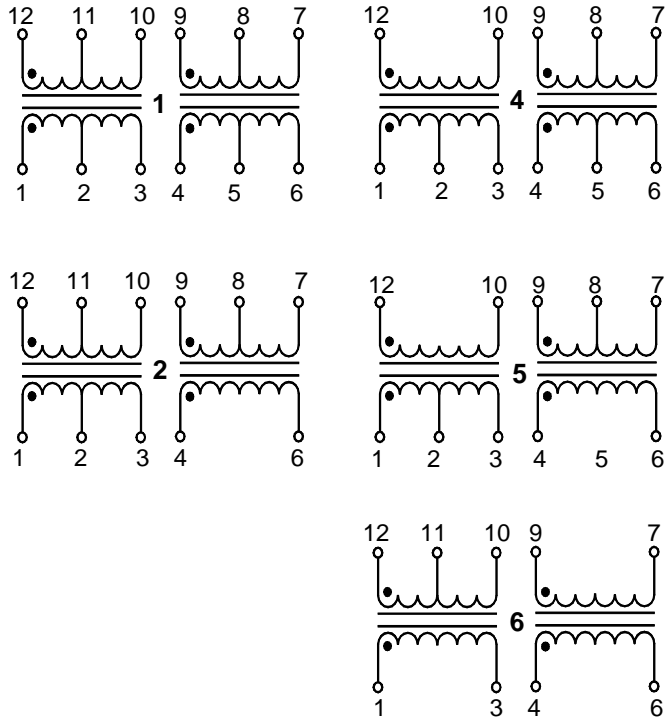
## T1/CEPT/ISDN-PRI TRANSFORMERS DUAL SURFACE MOUNT

TM0002

Bel introduces a new ISDN T1/CEPT/ISDN-PRI Transformer in a surface mount package



Dual surface mount package contains both transmit and receive transformers.  
Models matched to leading transceiver chips.  
Provide 1500 Vrms Isolation.



### ELECTRICALS SPECIFICATIONS @ 25°C

\* Extended Temp. Range Models

Part Number	Turns Ratio (pri:sec +/-5%)	OCL 25° C (mH min)	Cw/w (pf max)	L <sub>L</sub> (uH max)	DRC PRI (ohms max)	DRC SEC (ohms max)	Sch	Primary Pins
S553-6500-03	1ct:1ct & 1ct:1ct	1.2 & 1.2	50 & 50	0.8 & 0.8	1.0 & 1.0	1.0 & 1.0	1	12-10,4-6
S553-6500-05	1ct:2ct & 1ct:2ct	1.2 & 1.2	50 & 50	0.8 & 0.8	1.0 & 1.0	1.7 & 1.7	1	12-10,4-6
S553-6500-06	1ct:2ct & 1:1.36ct	1.6 & 1.6	60 & 50	1.0 & 0.8	1.5 & 1.5	2.0 & 1.7	2	12-10,4-6
S553-6500-07	1:1.15ct & 1ct:2ct	1.5 & 1.2	60 & 50	0.8 & 0.8	1.0 & 1.0	1.0 & 1.7	4	12-10,4-6
S553-6500-08	1:1:1.266 & 1:2ct	1.5 & 1.2	50 & 60	0.8 & 0.8	1.0 & 1.0	1.1 & 1.7	5	12-10,4-6
S553-6500-09	2:2ct & 2:1	1.6 & 1.6	50 & 40	1.3 & 1.3	1.1 & 1.1	1.1 & 0.7	6	1-3,4-6

At -40 degree C, OCL is 600 uH min. for all low temp. models with the exception of S553-6500-09 which is 800 uH min.. All other parameters are specified at +25 degree C only.

\*Extended temp. range is -40°C to +85°C

#### Corporate Office

**Bel Fuse Inc.**  
198 Van Vorst Street, Jersey City, NJ 07302-4496  
Tel: 201-432-0463  
Fax: 201-432-9542  
E-Mail: BelFuse@belfuse.com  
Internet: http://www.belfuse.com

#### Far East Office

**Bel Fuse Ltd.**  
8F/8 Luk Hop Street  
San Po Kong  
Kowloon, Hong Kong  
Tel: 852-2328-5515  
Fax: 852-2352-3706

#### European Office

**Bel Fuse Europe Ltd.**  
Preston Technology Management Centre  
Marsh Lane, Preston PR1 8UD  
Lancashire, U.K.  
Tel: 44-1772-556601  
Fax: 44-1772-888366