

**SURFACE MOUNT SCHOTTKY  
BARRIER RECTIFIERS**
**S5817FA--S5819FA**
**FEATURES**

- Low leakage
- Low forward voltage drop
- High current capability
- For surface mounted applications
- Easily cleaned with Alcohol, Isopropnol and similar solvents
- The plastic material carries U/L recognition 94V-0


**MECHANICAL DATA**

- Case: SMAFL molded plastic body
- Terminals: Solder plated, solderable per MIL-STD-202, Method 208
- Polarity: Color band denotes cathode end

**Maximum Ratings** (@TA = 25°C unless otherwise specified)

Characteristic	Symbol	S5817FA	S5818FA	S5819FA	UNITS
<b>Marking code</b>		<b>17F</b>	<b>18F</b>	<b>19F</b>	
Maximum repetitive peak reverse voltage	V <sub>RRM</sub>	20	30	40	V
Maximum RMS voltage	V <sub>RWS</sub>	14	21	28	V
Maximum DC blocking voltage	V <sub>DC</sub>	20	30	40	V
Average forward rectified current	I <sub>F(AV)</sub>	1.0			A
Peak forward surge current 8.3ms single half-sine-wave superimposed on rated load	I <sub>FSM</sub>	25			A

**Thermal Characteristics**

Characteristic	Symbol	S5817FA	S5818FA	S5819FA	UNITS
Operating temperature range	T <sub>J</sub>	- 55 -- +125			°C
Storage temperature range	T <sub>STG</sub>	- 55 -- +150			°C

**Electrical Characteristics** (@TA = 25°C unless otherwise specified)

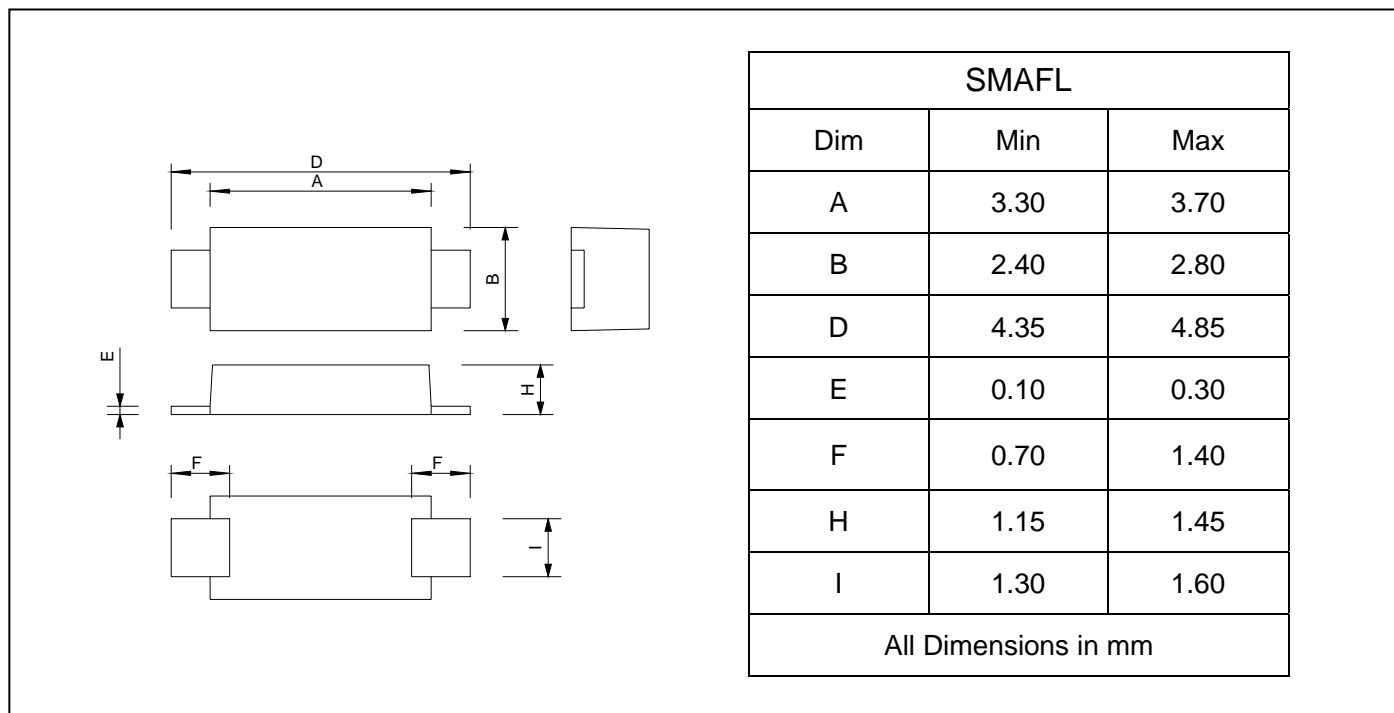
Characteristic	Symbol	S5817FA	S5818FA	S5819FA	UNITS
Maximum instantaneous forward voltage @I <sub>F</sub> =1.0A (Note1)	V <sub>F</sub>	0.45	0.55	0.60	V
Maximum DC reverse current @ T <sub>A</sub> =25°C at rated DC blocking voltage @T <sub>A</sub> =100°C	I <sub>R</sub>	1.0 10			m A

NOTE: 1. Pulse test: Pulse width 300us, duty cycle 1 %

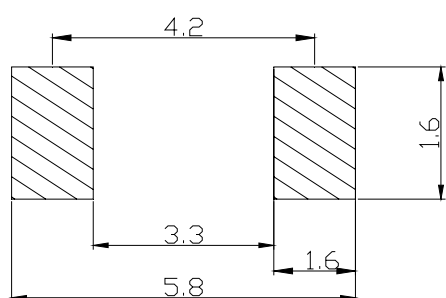
**SURFACE MOUNT SCHOTTKY  
BARRIER RECTIFIERS**

**S5817FA--S5819FA**

**PACKAGE OUTLINE DIMENSIONS**



**SOLDERING FOOTPRINT**



Unit : mm

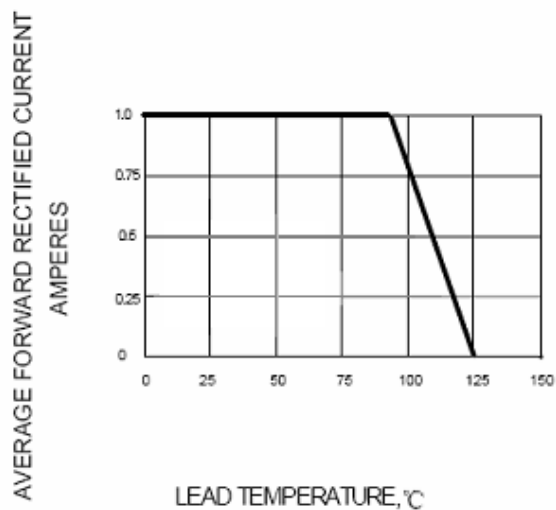
**PACKAGE INFORMATION**

Device	Package	Shipping
S5817FA--S5819FA	SMAFL	10000/Tape&Reel

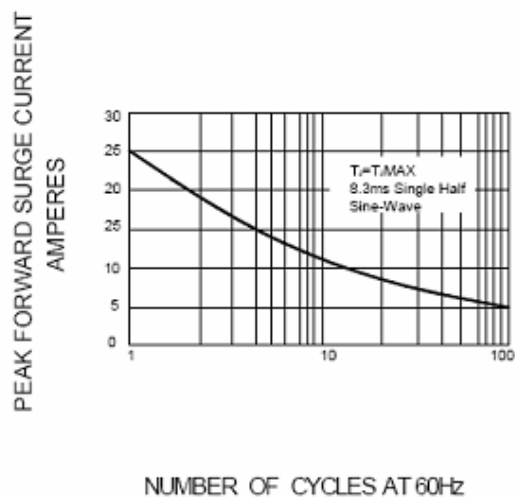
**SURFACE MOUNT SCHOTTKY  
BARRIER RECTIFIERS**

**S5817FA--S5819FA**

**FIG.1 – FORWARD DERATING CURVE**



**FIG.2 – PEAK FORWARD SURGE CURRENT**



**FIG.3 – TYPICAL INSTANTANEOUS FORWARD CHARACTERISTICS**

