

Serial Attached SCSI Connectors

SAS Series



OUTLINE

SAS(Serial Attached SCSI) is a new generation SCSI. The transmission was changed from parallel link to serial link. It is compatible to SATA(Serial ATA) connectors. SAS series can communicate with both SAS and SATA devices.

FEATURES

1. Compatible to Serial Attached SCSI(SFF-8482)
2. Both SAS and SATA devices are pluggable.
3. Supporting data speed of 3Gbps(Max.)



APPLICATIONS

High End Server, HDD and other peripheral devices

SPECIFICATIONS

Rated Voltage	30V AC (r.m.s.)
Rated Current	1.5A / Contact(Power Segment) 0.5A / Contact(Signal Segment)
Dielectric Withstanding Voltage	500V AC (r.m.s.) / 1 minute
Insulation Resistance	1000M Ω (min.) at 500V DC
Contact Resistance	30m Ω max.(Initial)

MATERIAL/FINISH



Item	Material/Finish
Housing	High Temperature Plastic (UL94V-0) / Black
Contact	Copper Alloy / Contact Area: Au(0.76 μ m) over Ni Plating Tail Area: Au(Flash) over Ni Plating
Locking Tab	Sn-Ag over Ni Plating

▶ Receptacle Connector

SAS-RA29-S1AA-FG

Mating Style
Receptacle Connector

Connector Style
Vertical SMT Type

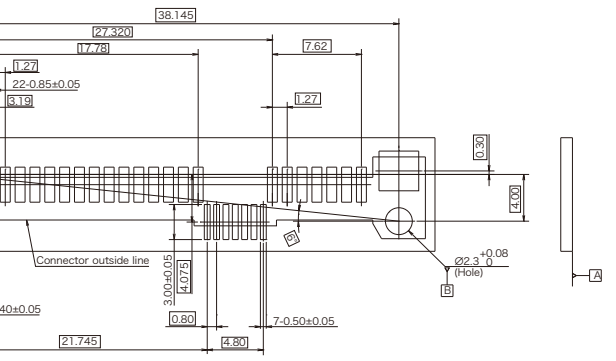
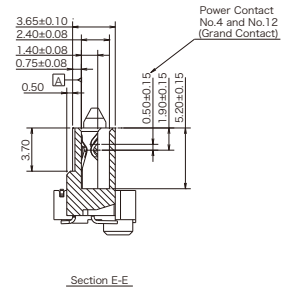
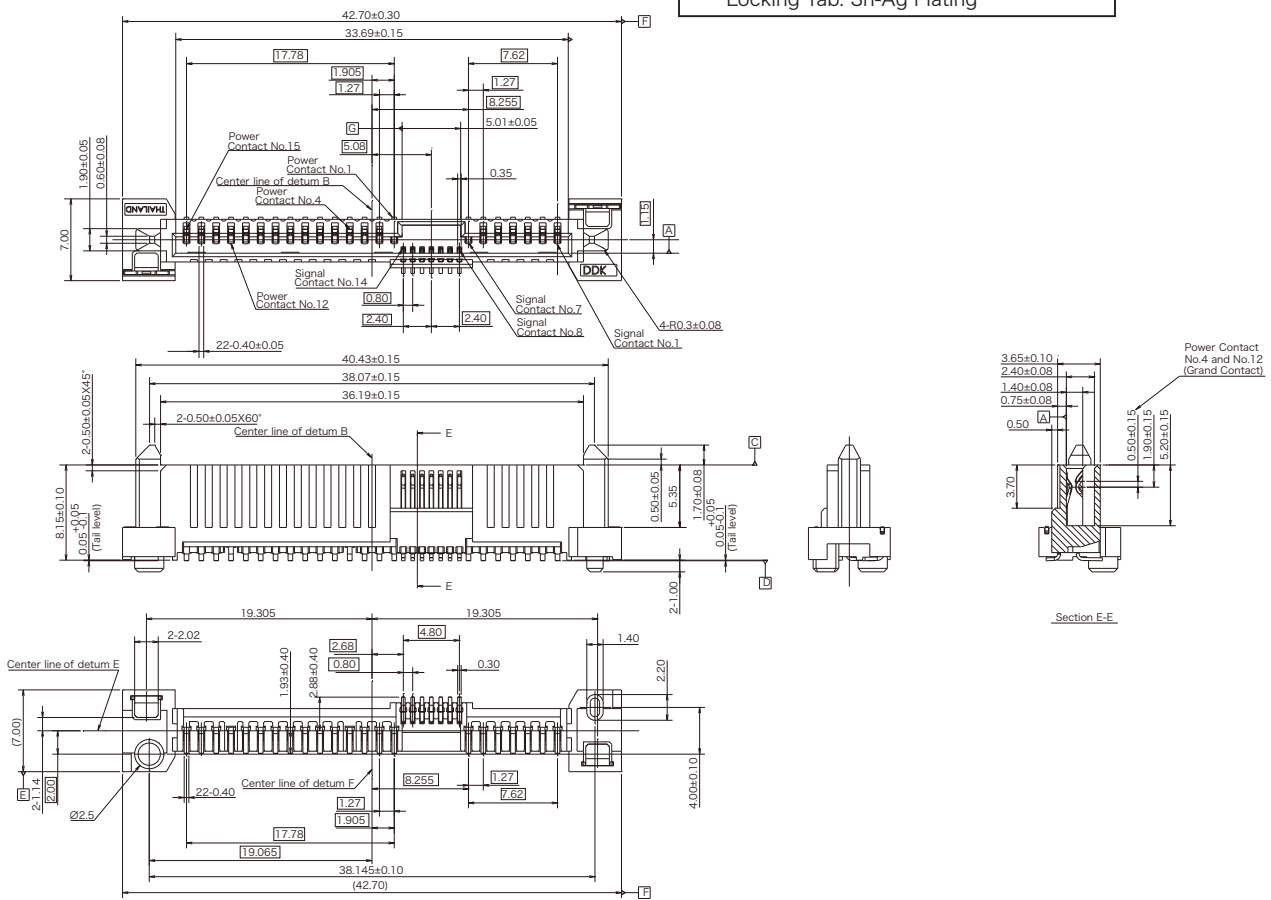
Number of Contact: 29

FG: Lead Free

Applicable PCB Thickness
A: 1.00mm min.

Connector Height
A: Height 8.15mm

Contact Plating
1: Contact Area: Au(0.76μm) over Ni Plating
Tail Area: Au(Flash) over Ni Plating
Locking Tab: Sn-Ag Plating



© Specifications and/or dimensions in this catalogue are subject to change without notice.
Your catalogue checking the latest specifications with our drawings would be highly appreciated.