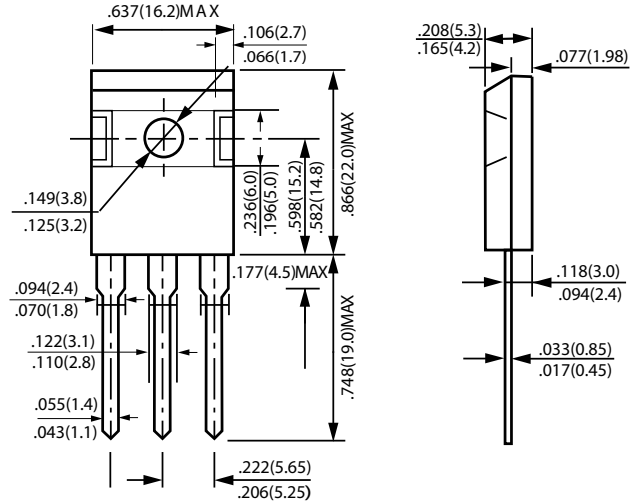
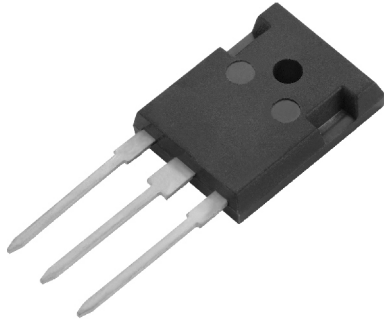


SB6040CP thru SB60100CP

SCHOTTKY BARRIER RECTIFIER

VOLTAGE - 40 TO 100 VOLTS CURRENT - 60 AMPERES

TO-247(TO-3P)



Dimensions in inches and (millimeters)

FEATURES

- Guard Ring for over voltage Protection
- High forward surge capability
- High frequency operation
- Component in accordance to RoHS 2002/95/EC

MECHANICAL DATA

- Case: TO-247(TO-3P)
- Case Material: Molded Plastic, UL Flammability Classification Rating 94V-0
- Terminals: Matte Tin Finish annealed over copper Leadframe. Solderable per MIL-STD-202
- Weight: 6.30 grams (approximate)

MAXIMUM RATINGS AND ELECTRICAL CHARACTERISTICS

Ratings at 25°C ambient temp. unless otherwise specified
 Single phase, half sine wave, 60Hz, resistive or inductive load
 For capacitive load, derate current by 20%

PARAMETER	SYMBOL	SR6040CP	SR6060CP	SR60100CP	UNIT
Maximum repetitive peak reverse voltage	V_{RRM}	40	60	100	V
Maximum RMS voltage	V_{RMS}	28	42	70	V
Maximum DC blocking voltage	V_{DC}	40	60	100	V
Maximum average forward rectified current (Total) (Per Leg)	I_F	60.0 30.0			A
Peak forward surge current, 8.3ms single half sine-wave superimposed on rated load	I_{FSM}	350.0			A
Maximum Instantaneous Forward Voltage $I_F=30A @ 25^\circ C$	V_F	0.65	0.75	0.90	V
Forward Voltage $I_F=30A @ 100^\circ C$		0.60	0.70	0.85	
Maximum DC Reverse Current @ $T_c=25^\circ C$ at Rated DC Blocking Voltage @ $T_c=100^\circ C$	I_R	3.0			mA
		100.0			
Typical Thermal Resistance	$R_{\theta JC}$	3			$^\circ C/W$
Operating Temperature Range	T_J	-55 to +125			$^\circ C$
Storage Temperature Range	T_{STG}	-55 to +150			$^\circ C$