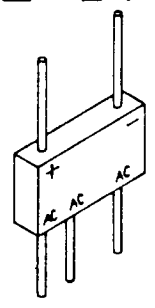


X00098

<p>SDA294</p> <p>3-PHASE BRIDGE RECTIFIERS</p> <p>50 - 3000 VOLTS</p>	<p>SSDI</p> <hr/> <p>14849 FIRESTONE BLVD. LA MIRADA, CA 9063E TEL: (213) 921-9660 FAX: (213) 921-2396</p>
--	---

CASE STYLE



FEATURES

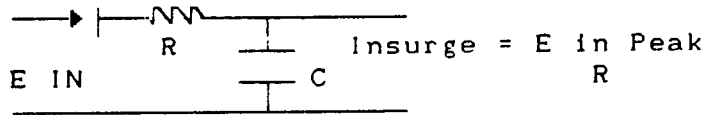
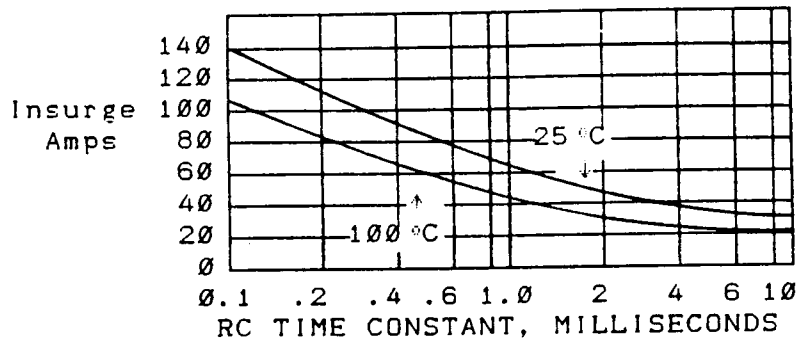
- ▶ PIV 50 to 1000 Volts/Average Output Current 2A
- ▶ PIV 1500 to 3000 Volts/Ave. Output Current .5A
- ▶ Operating and Storage Temp. -55°C to +150°C
- ▶ Subminiature Design for Mounting Versatility
- ▶ Also Available with "Fast" and "Ultra Fast" Reverse Recovery Characteristics Up To 3000V.

These units are designed in special packaging to provide maximum thermal conductivity and simple installation.

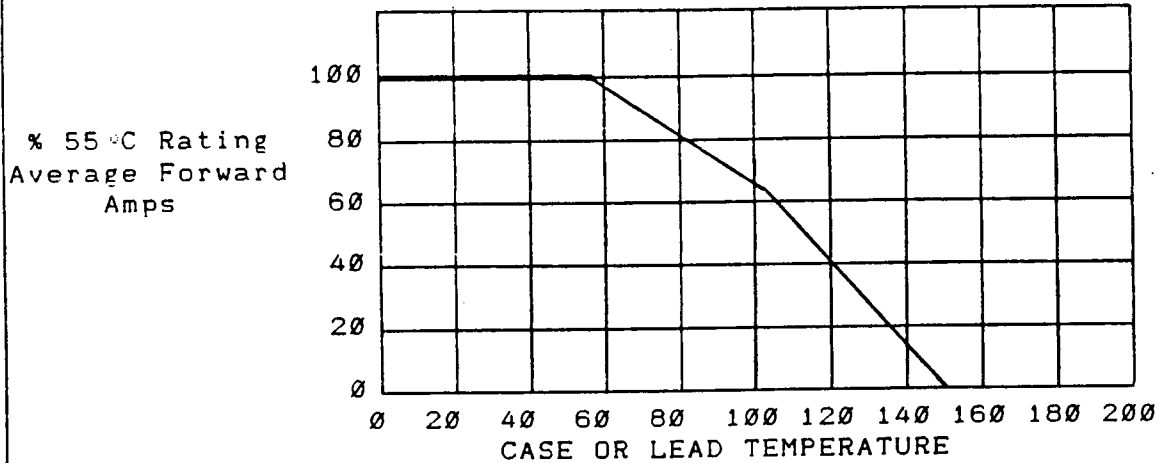
SEMTECH EQUIVALENT: S3BR05 through S3BR30
 UNITRODE EQUIVALENT: 700-1 through 700-6

Type	PIV per leg	Sine Wave RMS Input Voltage Max.	Average DC Output Current TC=(case temp)		Peak One Cycle Forward Surge Current	VF Max. per leg @ 10(AV)	Reverse Current (IR Max. per leg @ PIV)	
			55 °C	100 °C			25 °C	25 °C
	Volts	Volts	Amps	Amps	Amps	Volts	uA	uA
SDA294A	50	35	2	1.2	50	1.1	1	50
SDA294B	100	70	2	1.2	50	1.1	1	50
SDA294C	200	140	2	1.2	50	1.1	1	50
SDA294D	400	280	2	1.2	50	1.1	1	50
SDA294E	600	420	2	1.2	50	1.1	1	50
SDA294F	800	560	2	1.2	50	1.1	1	50
SDA294G	1000	700	2	1.2	50	1.1	1	50
SDA294H	1500	1050	0.5	0.3	10	4.5	1	50
SDA294J	2000	1400	0.5	0.3	10	4.5	1	50
SDA294K	2500	1750	0.5	0.3	10	4.5	1	50
SDA294L	3000	2100	0.5	0.3	10	4.5	1	50

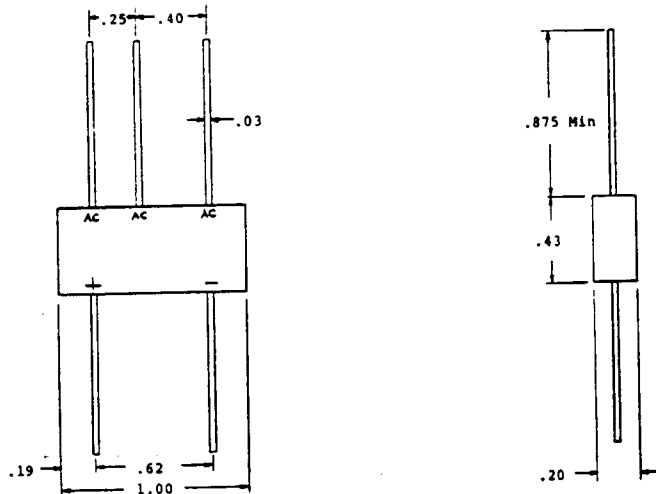
MAXIMUM RATING FOR CAPACITIVE LOADS



ALL BRIDGES
TEMPERATURE DERATING CURVE



CASE STYLE



All Dimensions in Inches
Tolerance $\pm .03$

SSDI

SOLID STATE DEVICES, INC.

14849 FIRESTONE BOULEVARD
TELEPHONE: (213) 921-9660

LA MIRADA, CA 90638
FAX: (213) 921-2396