



Solid State Devices, Inc.

14701 Firestone Blvd * La Mirada, Ca 90638
Phone: (562) 404-4474 * Fax: (562) 404-1773
ssdi@ssdi-power.com * www.ssdi-power.com

**SDR646CTM, Z, & J
thru
SDR647CTM, Z, & J**

Electrical Characteristic		Symbol	Min	Max	Units
Instantaneous Forward Voltage Drop ($T_A = 25^\circ\text{C}$, 300 μsec Pulse)	$I_F = 10\text{A}$	V_{F1}	—	1.28	V_{DC}
	$I_F = 20\text{A}$	V_{F2}	—	1.50	
Instantaneous Forward Voltage Drop ($I_F = 10\text{A}$, 300 μsec Pulse)	$T_A = -55^\circ\text{C}$	V_{F3}	—	1.35	V_{DC}
	$T_A = 100^\circ\text{C}$	V_{F4}	—	1.17	
Reverse Leakage Current (80% of rated V_R , 300 μs pulse min.)	$T_A = 25^\circ\text{C}$	I_{R1}	—	50	μA
	$T_A = 100^\circ\text{C}$	I_{R2}	—	5.0	mA
Reverse Recovery Time ($I_F = 0.5\text{A}$, $I_R = 1\text{A}$, $I_{RR} = 0.25\text{A}$, $T_A = 25^\circ\text{C}$)		t_{RR}	—	60	nsec
Junction Capacitance ($V_R = 10V_{DC}$, $T_A = 25^\circ\text{C}$, $f = 1\text{MHz}$)		C_J	—	70	pF

NOTES:

- 1/ For Ordering Information, Price, and Availability Contact Factory.
- 2/ Screened to MIL-PRF-19500.
- 3/ Both Legs Tied Together.
- 4/ Per Leg.

NOTE: All specifications are subject to change without notification. SCD's for these devices should be reviewed by SSDI prior to release.

DATA SHEET #: RU0089F

DOC



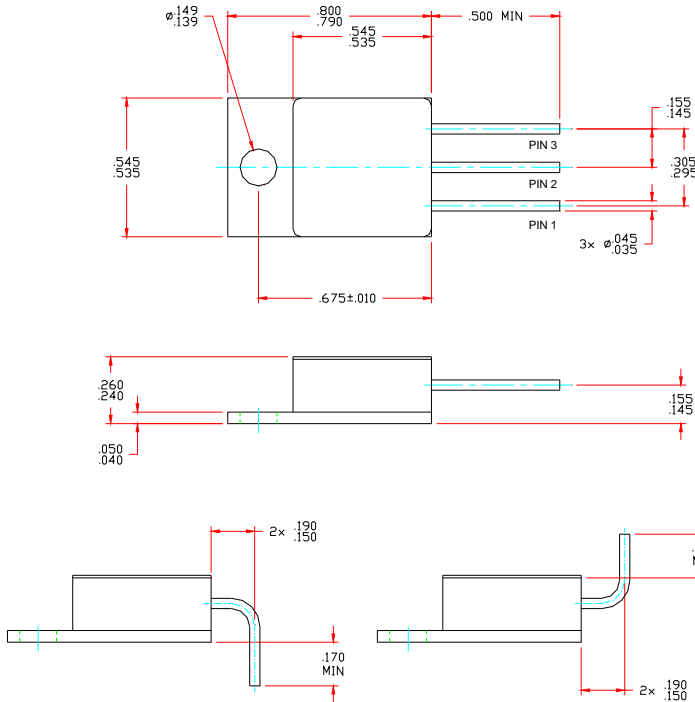
Solid State Devices, Inc.

14701 Firestone Blvd * La Mirada, Ca 90638
 Phone: (562) 404-4474 * Fax: (562) 404-1773
 ssdi@ssdi-power.com * www.ssdi-power.com

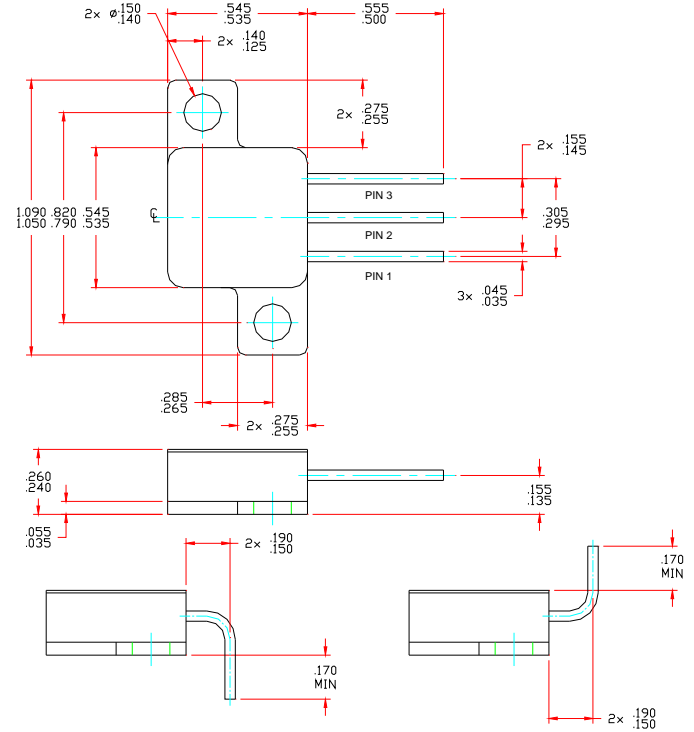
**SDR646CTM, Z, & J
 thru
 SDR647CTM, Z, & J**

Available Part Numbers: SDR646CTM, SDR646CTZ, SDR646CTJ SDR647CTM, SDR647CTZ, SDR647CTJ	PIN ASSIGNMENT			
	PACKAGE	Pin 1	Pin 2	Pin 3
	TO-254 (M)	Anode 1	Cathode	Anode 2
	TO-254Z (Z)	Anode 1	Cathode	Anode 2
TO-257 (J)	Anode 1	Cathode	Anode 2	

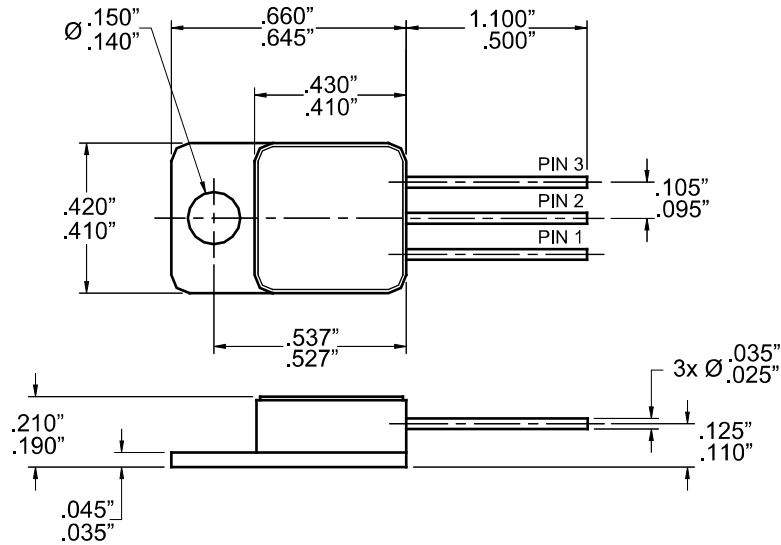
TO-254:



TO-254Z:



TO-257:



NOTE: All specifications are subject to change without notification. SCDD's for these devices should be reviewed by SSDI prior to release.

DATA SHEET #: RU0089F

DOC