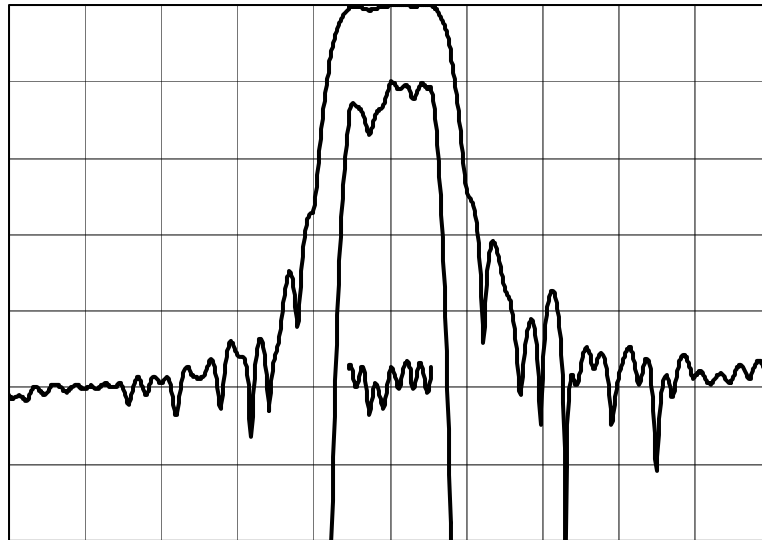


TYPICAL PERFORMANCE


Horizontal: 0.5 MHz/div Vertical (from top): Magnitude 10 dB/div
 Magnitude 1 dB/div
 Group Delay 200 ns./div

SPECIFICATION

| Parameter | Min | Typ | Max | Units |
|--|-----|------|------|--------------|
| Center Frequency (F_C) ¹ | | 240 | | MHz |
| Insertion Loss ² | | 14 | 16 | dB |
| 1 dB Bandwidth ³ | 1.1 | | | MHz |
| 10 dB Bandwidth ³ | | | 1.8 | MHz |
| 25 dB Bandwidth ³ | | | 2.5 | MHz |
| 35 dB Bandwidth ³ | | | 3.4 | MHz |
| Passband Amplitude Ripple ⁴ | | 0.8 | 1.25 | dB p-p |
| Passband Phase Linearity ⁴ | | 4 | 6 | deg p-p |
| Average Passband Delay ⁴ | | 2.58 | 2.75 | μ s |
| Passband Group Delay Ripple ⁴ | | 140 | 200 | ns p-p |
| Ultimate rejection, $F_C \pm (2.5 \text{ to } 70)$ MHz | 40 | 45 | | dB |
| Return Loss at Input and Output ⁴ | 6 | 14 | | dB |
| Source and Load Impedance | | 50 | | Ω |
| Operating Temperature Range ⁵ | -10 | | +85 | $^{\circ}$ C |

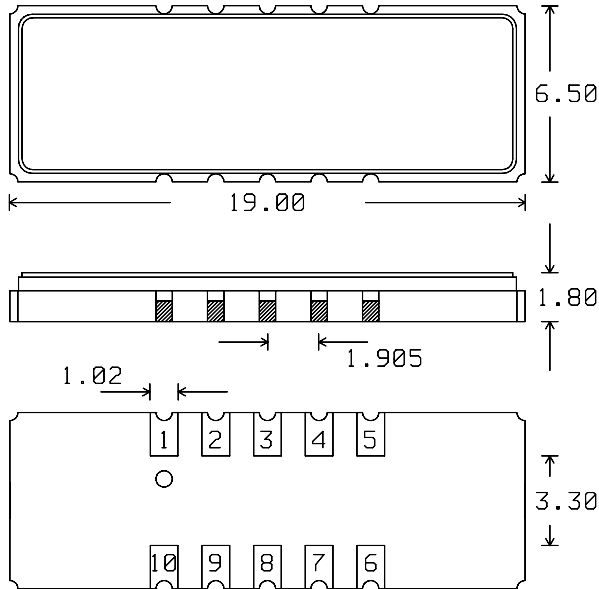
Notes:

1. Fixed reference. All specified bandwidths are centered at this frequency.
2. Average across passband range $F_C \pm 0.55$ MHz.
3. All bandwidth dB values are taken relative to the Insertion Loss.
4. Over the passband range $F_C \pm 0.55$ MHz.
5. All electrical specifications apply over the full operating temperature range.

Micro Networks Corporation

Worldwide Headquarters: 324 Clark Street Worcester, MA 01606. tel: 508-852-5400 fax: 508-852-8456
 European Sales Headquarters: Hertosingel 20 6214 AD Maastricht, Netherlands. tel: +31-43-32-70912 fax: +31-43-32-70715
www.micronetworks.com

PACKAGE OUTLINE

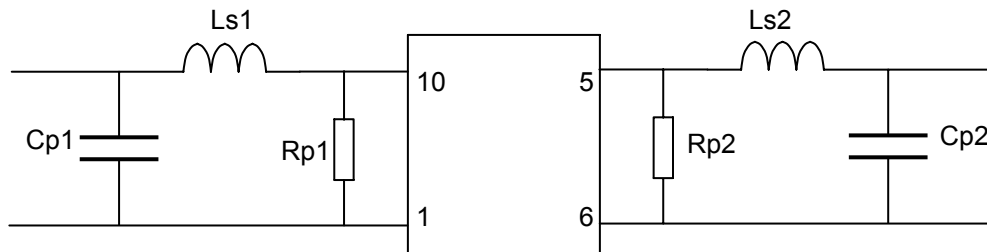


Units: mm

Pin Configuration:

Input: 10
 Input Return: 1
 Output: 5
 Output Return: 6
 Ground: 2, 3, 4, 7, 8, 9

MATCHING CIRCUIT



Typical component values: Cp1 = 27 pF Cp2 = 27 pF
 Ls1 = 39 nH Ls2 = 47 nH
 Rp1 = 560 Ω Rp2 = 1.5 k Ω

Note:

- Component values may change depending on board layout.

ISO 9001
Registered