

Surface Mount Schottky Barrier rectifiers

Using the Schottky Barrier principle with high temperature operation metal. The proprietary barrier technology allows for reliable operation up to 150°C junction temperature. Typical application are in switching Mode Power Supplies such as adaptators, Photovoltaic Solar cell protection, free-wheeling and polarity protection diodes.

Features

- * Ultra Low Forward Voltage.
- * Low Switching noise.
- * High Current Capacity
- * Low Power Loss & High efficiency.
- * 150°C Operating Junction Temperature
- * Low Stored Charge Majority Carrier Conduction.
- * Plastic Material used Carries Underwriters Laboratory Flammability Classification 94V-0



* In compliance with EU RoHS 2002/95/EC directives

SCHOTTKY BARRIER RECTIFIERS

**3 AMPERES
40VOLTS**



DO-214AA(SMB)

MAXIMUM RATINGS

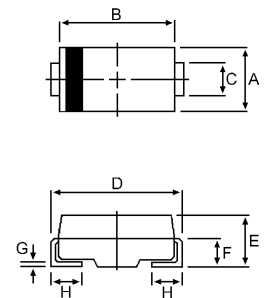
Characteristic	Symbol	SR34L	Unit
Peak Repetitive Reverse Voltage Working Peak Reverse Voltage DC Blocking Voltage	V_{RRM} V_{RWM} V_R	40	V
RMS Reverse Voltage	$V_{R(RMS)}$	28	V
Average Rectifier Forward Current	$I_{F(AV)}$	3	A
Peak Repetitive Forward Current (Rate V_R , Square Wave, 20kHz)	I_{FM}	6	A
Non-Repetitive Peak Surge Current (Surge applied at rate load conditions halfware, single phase, 60Hz)	I_{FSM}	125	A
Operating and Storage Junction Temperature Range	T_J, T_{stg}	-65 to +150	°C

THERMAL RESISTANCES

Typical Thermal Resistance junction to body	$R_{\theta j-c}$	40	°C/w
---	------------------	----	------

ELECTRICAL CHARACTERISTICS

Characteristic	Symbol	SR34L			Unit
		Min.	Typ.	Max.	
Maximum Instantaneous Forward Voltage ($I_F = 0.1$ Amp $T_C = 25^\circ\text{C}$) ($I_F = 1.5$ Amp $T_C = 25^\circ\text{C}$) ($I_F = 3.0$ Amp $T_C = 25^\circ\text{C}$)	V_F	---	0.28 0.37 0.41	0.30 0.39 0.49	V
Maximum Instantaneous Reverse Current (Rated DC Voltage, $T_C = 25^\circ\text{C}$) (Rated DC Voltage, $T_C = 100^\circ\text{C}$)	I_R		0.2 30		mA



DIM	MILLIMETERS	
	MIN	MAX
A	3.30	3.90
B	4.20	4.60
C	1.80	2.20
D	5.10	5.60
E	1.90	2.50
F		1.30
G		0.22
H	0.95	1.35

CASE---
Transfer molded plastic

POLARITY---
Cathode indicated polarity band

SR34L

FIG-1 FORWARD CURRENT DERATING CURVE

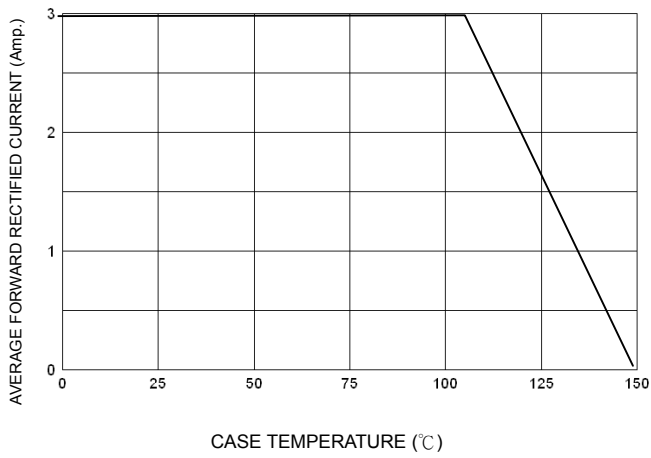


FIG-2 TYPICAL FORWARD CHARACTERISTICS

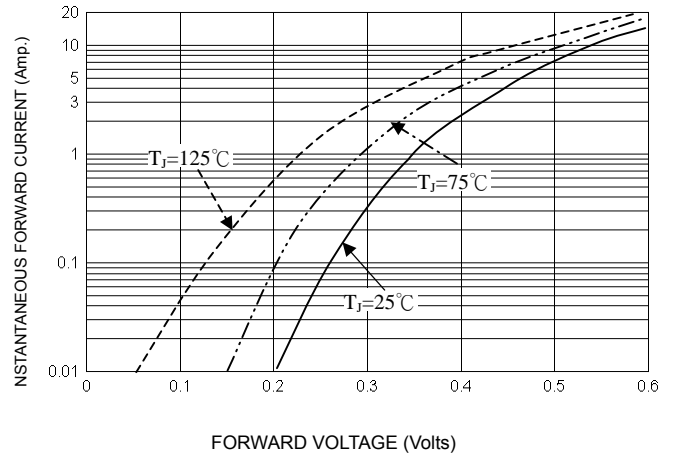


FIG-3 TYPICAL REVERSE CHARACTERISTICS

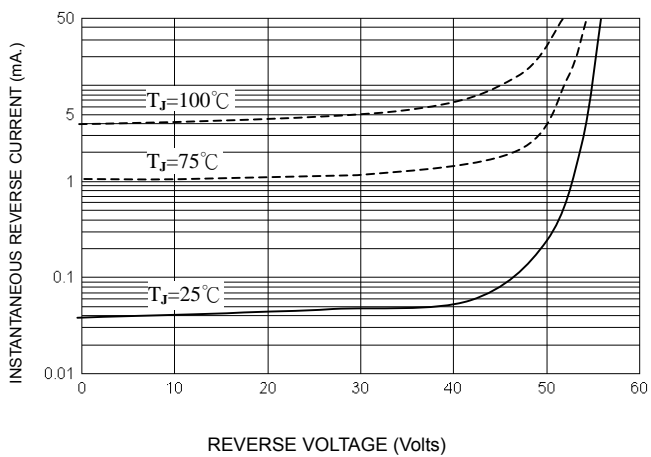


FIG-4 TYPICAL JUNCTION CAPACITANCE

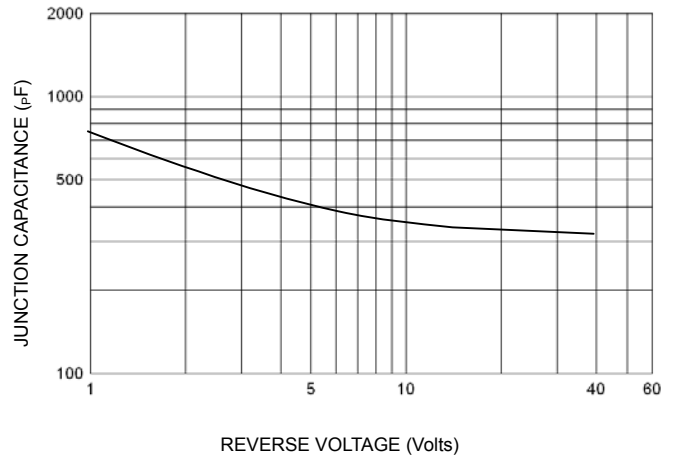


FIG-5 PEAK FORWARD SURGE CURRENT

