

■ Features

- Molded epoxy body
- High isolation coil/contact
- Can make high voltage contact
- Sealed construction permits automatic flow soldering and cleaning



■ Coil Rating (20°C)

Contact Form	Part Number	Nominal Voltage (VDC)	Coil Resistance (Ω) $\pm 10\%$	Must Operate (VDC)	Must Release (VDC)	Rated Current (mA)	Continuous Voltage (Max)	Special Features
1A	SS1A0500	5	500	3.75	1.0	10	10	standard
	SS1A1200	12	1000	9.0	1.2	12	20	standard
	SS1A2400	24	2000	18.00	2.4	12	28	standard
SPST-NO	SS1A050D	5	500	3.75	1.0	10	10	with diode
	SS1A120D	12	1000	9.0	1.2	12	20	with diode
	SS1A240D	24	2000	18.00	2.4	12	28	with diode
1C	SS1C0500	5	500	3.75	1.0	25	10	standard
	SS1C1200	12	1000	9.00	1.2	24	20	standard
	SS1C2400	24	2000	18.00	2.4	12	28	standard
SPDT-CO	SS1C0500	5	500	3.75	1.0	25	10	with diode
	SS1C1200	12	1000	9.00	1.2	24	20	with diode
	SS1C2400	24	2000	18.00	2.4	12	28	with diode

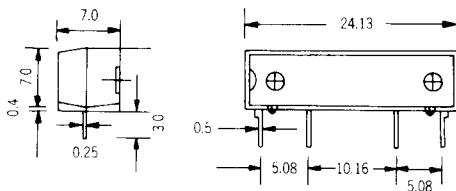
High Resistance Coil for Low Power Consumption • High Efficiency

1A SPST-NO	SS1A050099	5	1000	3.75	1.0	5	10	standard
	SS1A120098	12	2000	9.00	1.2	6	20	standard
	SS1A120099	12	3000	18.00	2.4	4	28	standard

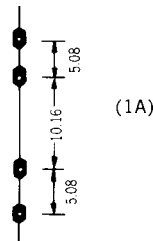
■ Specifications

Item	Contact Form	1A	1C
Contact Resistance		100mw max. initial	150mw max. initial
Operate Time		0.5msec max.	1.0msec max.
Bounce Time		0.5msec max.	2.0msec max.
Release Time		0.2msec max.	0.2msec max.
Insulation Resistance		10 ¹¹ W min.	10 ¹¹ W min.
Power		10VA max.	3VA max.
Switching Voltage		200VDC max.	100VDC max.
Switching Current		0.5Amps max.	0.25Amps max.
Carry Current		1.0Amps max.	0.5Amps max.
Life Expectancy		10 ⁸ (signal level)	5 x 10 ⁷ (signal level)
Minimum Breakdown Voltage		250VDC across open contact	200VDC across open contact
		2500VDC between coil and contact	1000VDC between coil and contact
Operating Temperature		-40°C ~ +85°C	-40°C ~ +85°C
Storage Temperature		-50°C ~ +125°C	-50°C ~ +125°C
Minimum Permissible Load		100mVDC 10 μA	100mVDC 10 μA
Vibration		20g (10 ~ 2000Hz)	20g (10 ~ 2000Hz)
Shock		30g (11 ms. 1/2 sin wave)	30g (11 ms. 1/2 sin wave)
Resonant Frequency		3.5KHz	3.5KHz

■ Dimensions

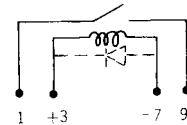


PCB Layout

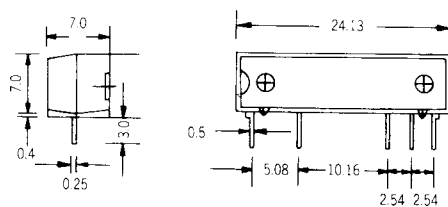
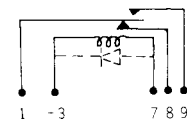


Circuit Schematic
Top View

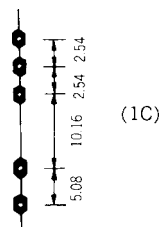
1A
SPST-NO



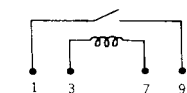
1C
SPDT-CO



PCB Layout



1A*
SPST-NO



*High Resistance Coil Type