

**SURFACE MOUNT SCHOTTKY
BARRIER RECTIFIERS**

SS5150C--SS5200C

FEATURES

- Metal-Semiconductor junction with guard ring
- Epitaxial construction
- Low forward voltage drop, low switching losses
- High surge capacity
- For use in low voltage, high frequency inverters free wheeling, and polarity protection applications



MECHANICAL DATA

- Case: SMC molded plastic body
- Terminals: Axial lead ,solderable per MIL-STD750, Method 2026
- Polarity: As marked

Maximum Ratings (@TA = 25°C unless otherwise specified)

Characteristic	Symbol	SS5150C	SS5200C	UNITS
Marking code		SS5CC	SS5DC	
Maximum repetitive peak reverse voltage	V_{RRM}	150	200	V
Maximum RMS voltage	V_{RWS}	105	140	V
Maximum DC blocking voltage	V_{DC}	150	200	V
Maximum average forward rectified current at $T_L=110^\circ\text{C}$	$I_{F(AV)}$	5.0		A
Peak forward surge current 8.3ms single half-sine-wave	I_{FSM}	150		A

Thermal Characteristics

Characteristic	Symbol	SS5150C	SS5200C	UNITS
Typical thermal resistance (NOTE1)	$R_{\theta JA}$	57		°C/W
	$R_{\theta JC}$	29		
	$R_{\theta JL}$	19		
Operating temperature range	T_J	-55----+150		°C
Storage temperature range	T_{STG}	-55----+150		°C

Electrical Characteristics (@TA = 25°C unless otherwise specified)

Characteristic	Symbol	SS5150C	SS5200C	UNITS
Maximum instantaneous forward voltage at $I_{FM}=5.0\text{A}$	V_F	0.95		V
Maximum DC reverse current at rated DC blocking voltage	I_R	$T_A=25^\circ\text{C}$	0.1	mA
		$T_A=100^\circ\text{C}$	10	

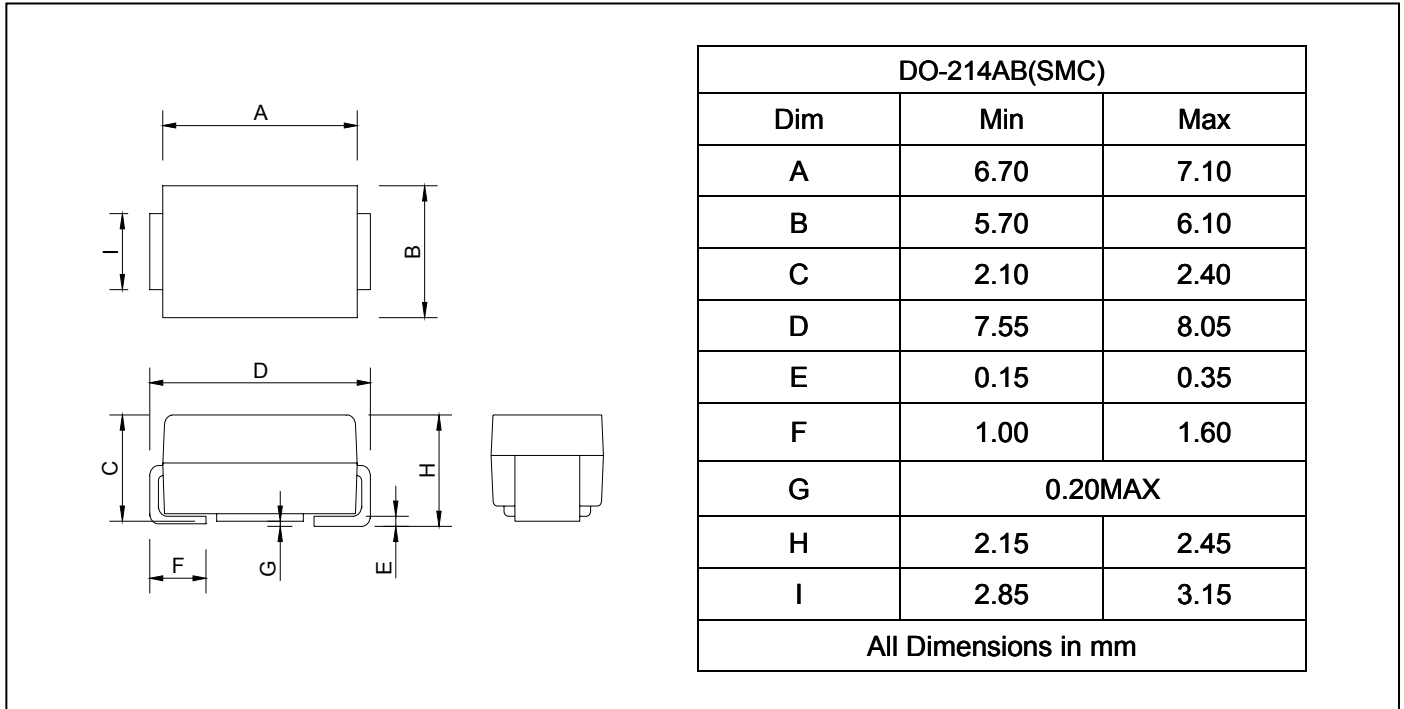
NOTE: (1) Device mounted on PCB with 15mm x 25 mm copper pad areas



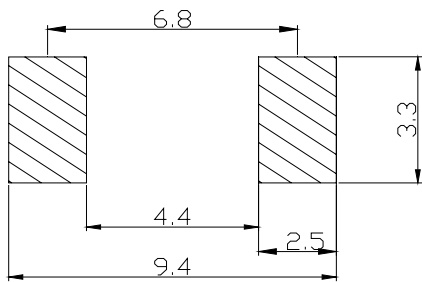
**SURFACE MOUNT SCHOTTKY
BARRIER RECTIFIERS**

SS5150C--SS5200C

PACKAGE OUTLINE DIMENSIONS



SOLDERING FOOTPRINT



Unit : mm

PACKAGE INFORMATION

Device	Package	Shipping
SS5150C--SS5200C	DO-214AB(SMC)	3000/Tape&Reel



**SURFACE MOUNT SCHOTTKY
BARRIER RECTIFIERS**

SS5150C--SS5200C

Fig.1-Forward Derating Curve

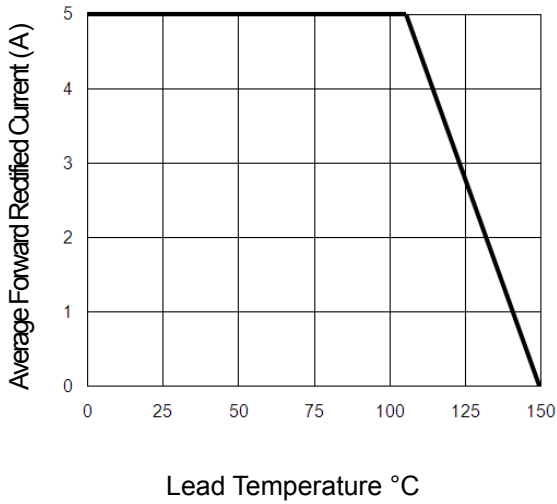


Fig.2-Peak Forward Surge Current

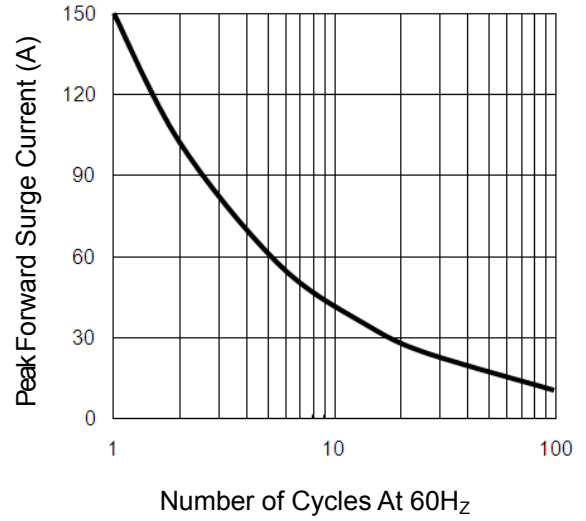


Fig.3-Typical Forward Voltage Characteristic

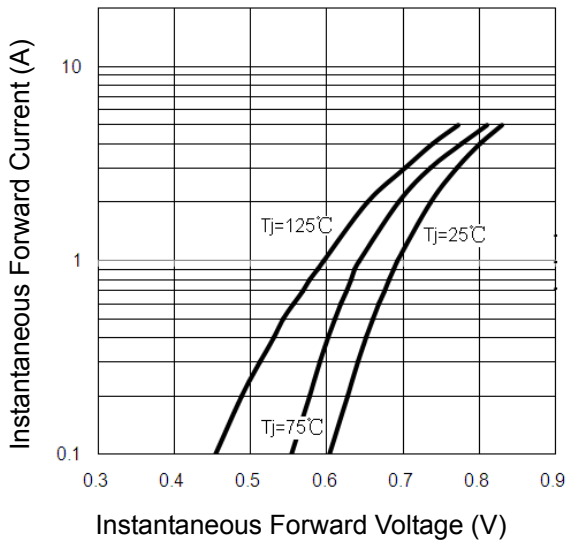


Fig.4-Typical Reverse Characteristic

