

SX-4417

Non-contacting steering sensor with combined torque and multi-turn position output

The sensor provides dual torque and position outputs in one compact package.



ELECTRICAL¹

Torque Operating Input Voltage Range	4.5 to 5.5 VDC
Torque Input Voltage Absolute Limits	-14.5 to +30 VDC
Torque Supply Current	10 to 20 mA
Torque Sensed Angle	±5°
Torque Signal Linearity	±3%
Torque Hysteresis	±1.3%
Torque Signal Microgradient (over travel increment of 0.4°)	3.2% V _{in} ±1.0% V _{in}
Torque Wobble	40 mV
Position Operating Input Voltage Range	4.5 to 5.5 VDC
Position Input Voltage Absolute Limits	-0.3 to +6.5 VDC
Position Supply Current	25 to 50 mA
Position Signal Linearity	±1%
Position Hysteresis	±0.25%
Position Signal Microgradient (over travel increment of 2°)	1.11% V _{in} ±0.34% V _{in}

MECHANICAL

Torque Mechanical Travel	Continuous
Position Mechanical Travel	Continuous
Turning Torque (position rotor to housing)	0.02 NM maximum
Weight	98 grams nominal

ENVIRONMENTAL

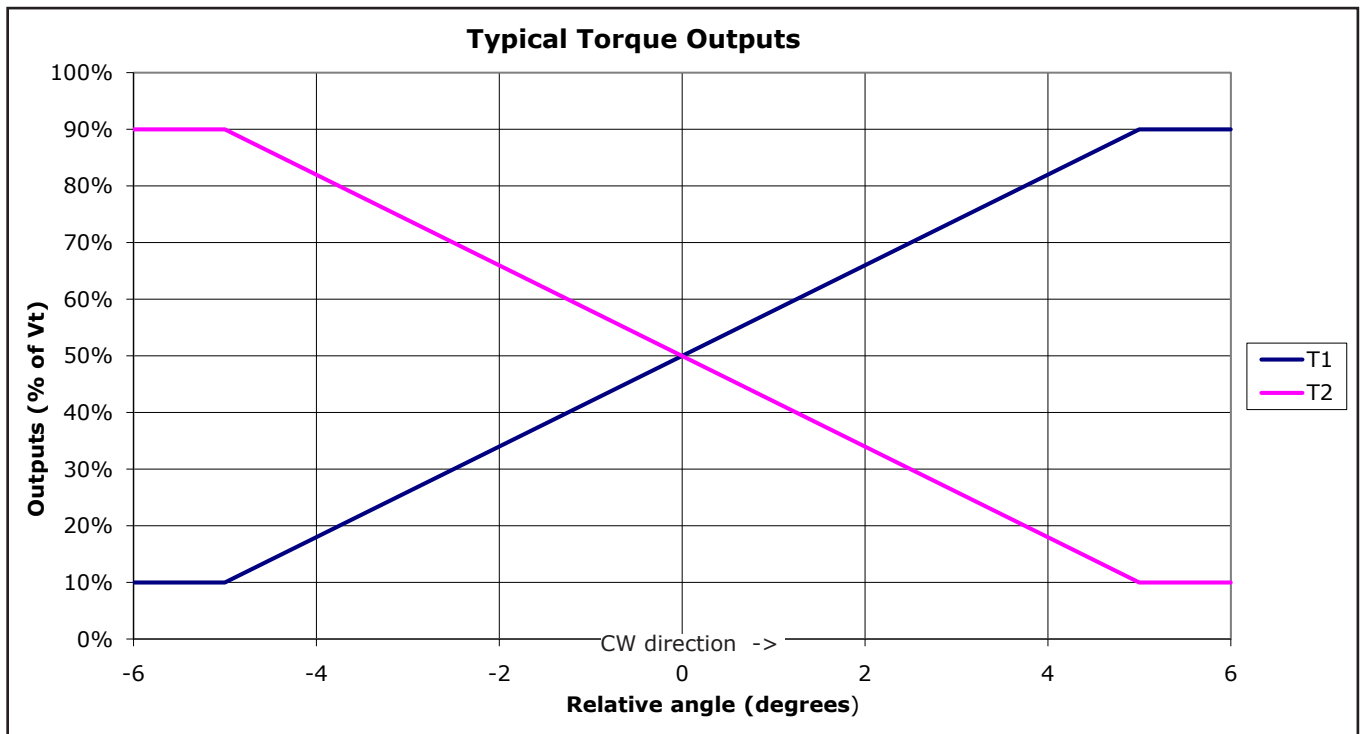
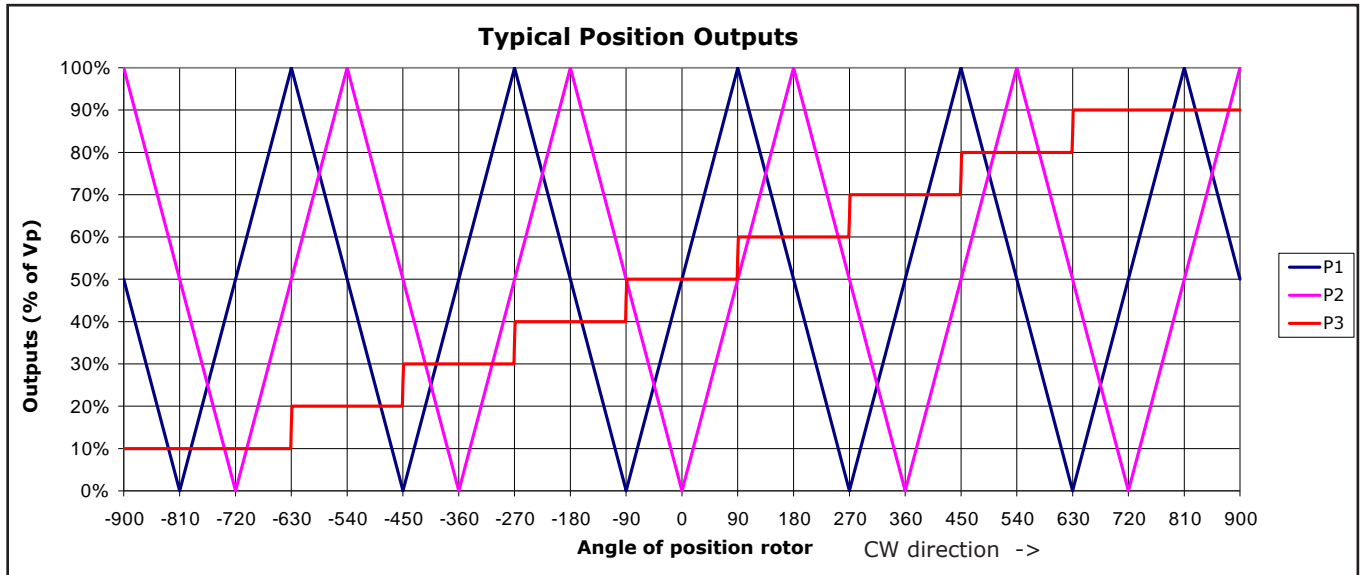
Operating Temperature Range	-40°C to +85°C
Vibration	10 to 55 Hz with 1 mm P-P constant displacement, 120 hours each of 3 planes
Torque Rotational Life	Infinite (non-contacting)
Position Rotational Life	1 million revolutions
Storage Temperature Range	-55°C to +105°C

¹ Specifications per 122-4417-44A and subject to change without notice.



SX-4417

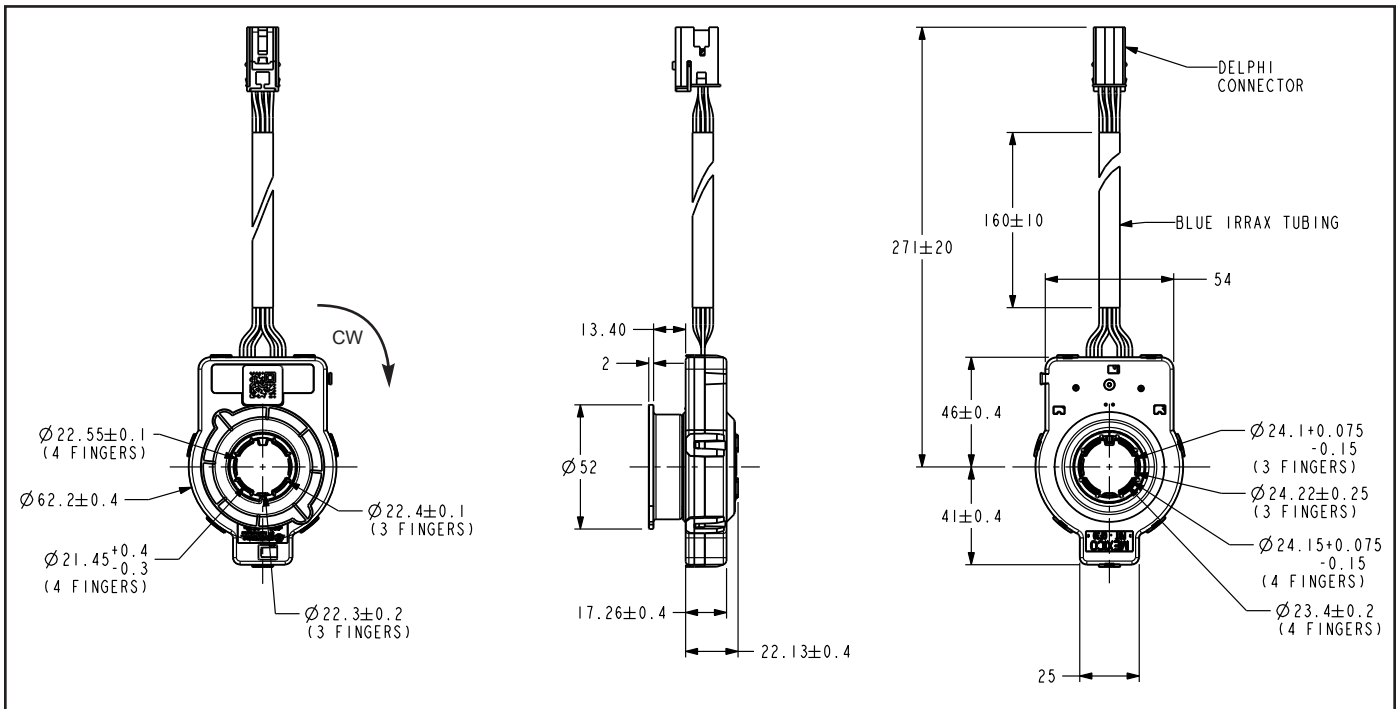
OUTPUT CHARTS



Different output signals can be easily configured by BI. Contact factory for details.

SX-4417

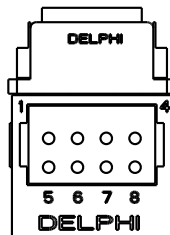
OUTLINE DRAWING



Dimensions in mm
Detailed outline drawing available on request

Pinouts

PIN No.	SIGNAL	WIRE COLOR
1	P3	YELLOW
2	P1	BROWN
3	VT	RED
4	T2	PURPLE
5	VP	ORANGE
6	P2	WHITE
7	GND	BLACK
8	T1	BLUE



DELPHI CONNECTOR 15406142
WIRE INSERTION END VIEW

BARCODE LABEL



Micro QR M4
symbology

Content not human readable:
4417 E YY DDD T SSSS

