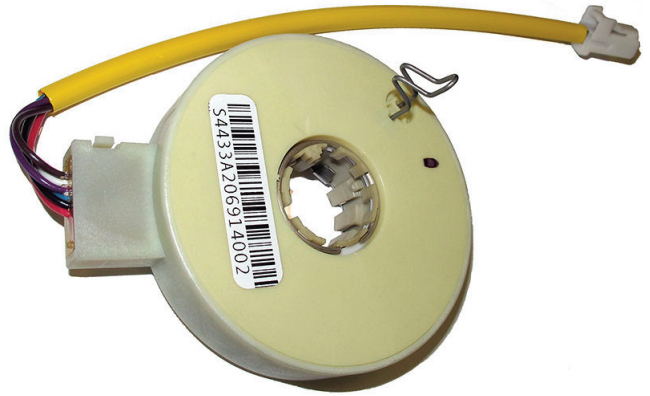


# SX-4433

## LH3 Steering Sensor with Torque and Position Output

The LH3 torque and position sensor is ideally suited for demanding Electric Power Steering systems.



### ELECTRICAL<sup>1</sup>

Torque Signal Linearity	±3%
Torque Hysteresis	0.5%
Torque Signal Microgradient	±30% of theoretical slope over 0.4° interval
Torque Signal Sensing Angle	±8°
Position Signal Linearity	±1.5%
Position Signal Microgradient	±30% of theoretical slope over 2° interval
Total Resistance	518 Ω ±30%

### MECHANICAL

Torque Mechanical Travel	±11.4°
Turning Torque (rotor to rotor)	0.03 NM Max.
Turning Torque (position rotor to housing)	0.06 NM Max.
Position Mechanical Travel	Continuous
Weight	95 grams maximum

### ENVIRONMENTAL

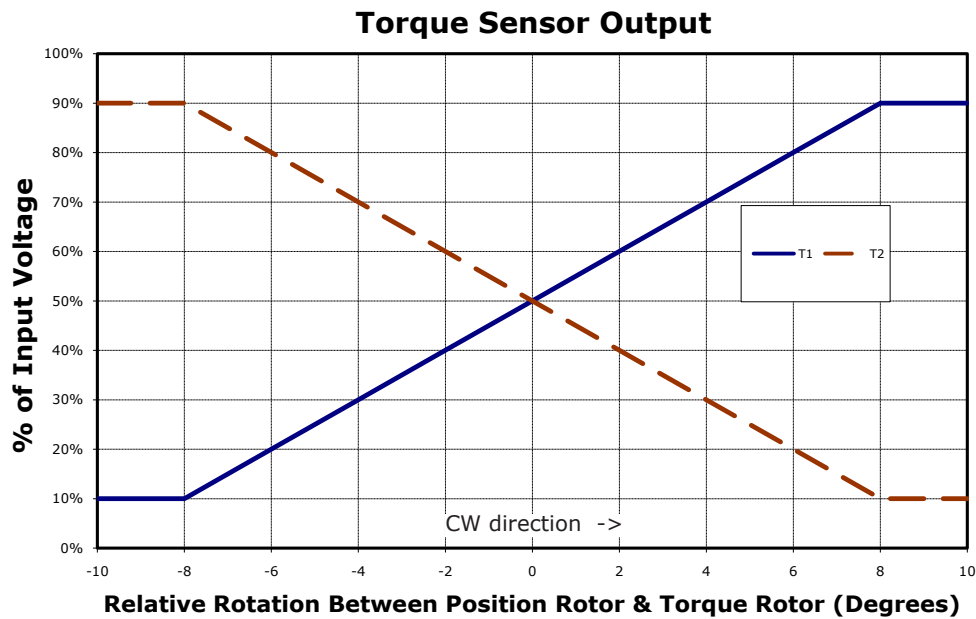
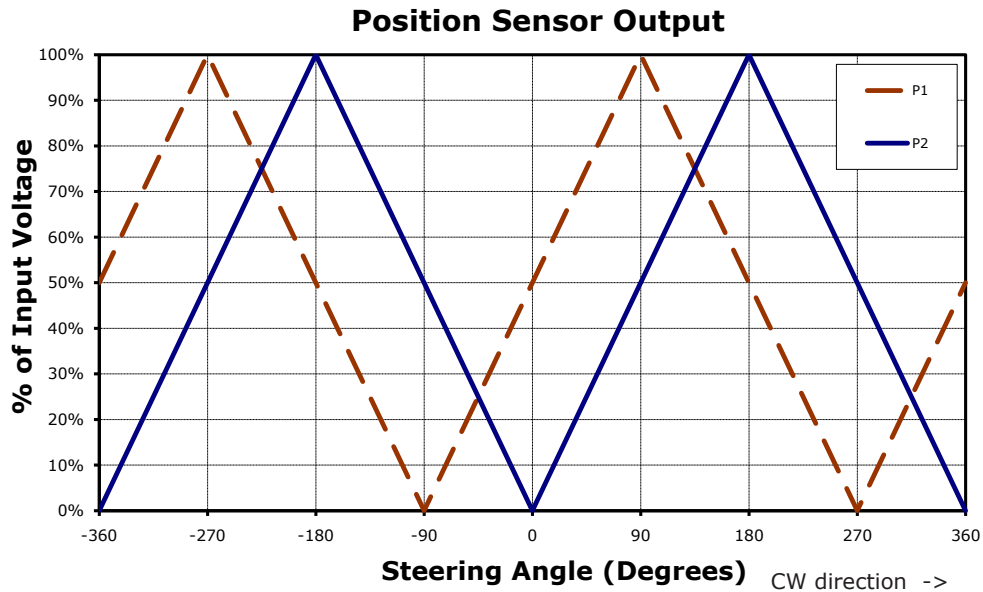
Operating Temperature Range	-40°C to +85°C
Shock	14 ms half-sine at 300 m/s <sup>2</sup>
Vibration	10 to 55 Hz with 1 mm P-P constant displacement, 120 hours each of 3 planes
Torque Rotational Life	1 million cycles
Position Rotational Life	1 million cycles
Storage Temperature Range	-40°C to +105°C

<sup>1</sup> Specifications subject to change without notice.



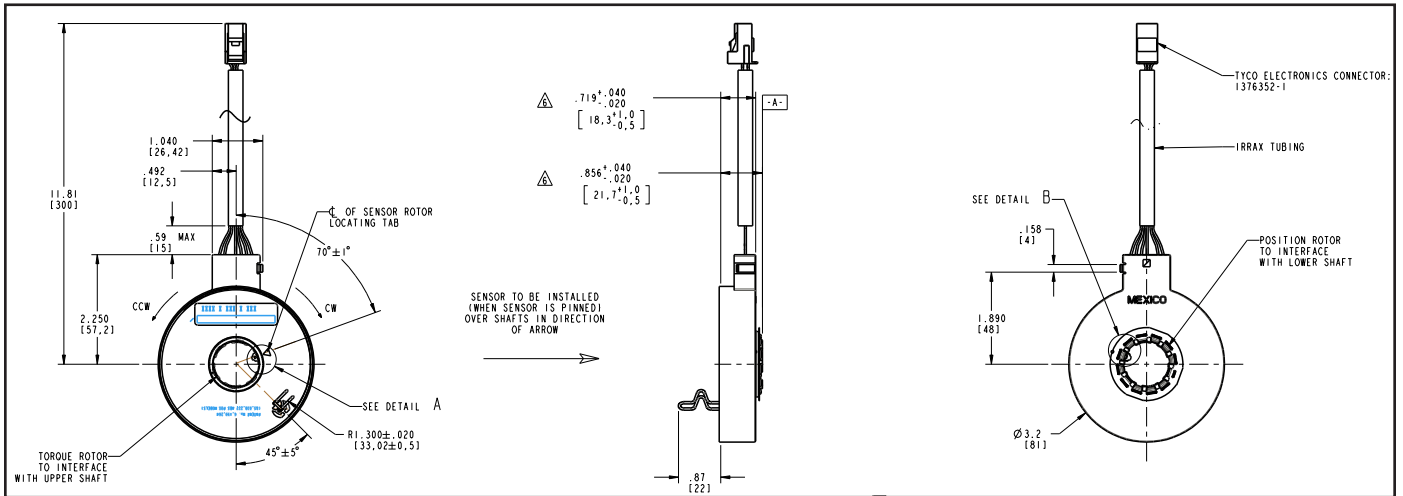
# SX-4433

## OUTPUT CHARTS



# SX-4433

## OUTLINE DRAWING



Tolerances  $\pm 0.25$  mm unless otherwise specified. See drawing # 122-4433-80 for details.

## PINOUTS

VIEW FROM  
WHERE WIRES ENTER  
CONNECTOR

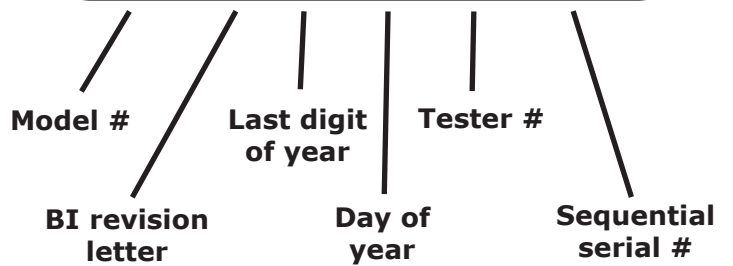
TYCO CONNECTOR: 1376352-1			
4	3	2	1
8	7	6	5

PIN No.	SIGNAL	WIRE COLOR
1	NOT USED	- - -
2	P1	BROWN
3	Vcc	RED
4	T2	PURPLE
5	NOT USED	- - -
6	P2	WHITE
7	GND	BLACK
8	T1	BLUE

## BARCODE LABEL

Code 128 symbology

4433 A Y DDD T SSSS



### BI Technologies Corporation

4200 Bonita Place, Fullerton, CA 92835 USA

Phone: 714 447 2345 Website: [www.bitechnologies.com](http://www.bitechnologies.com)

January 28 2015

SX-4433 page 3 of 4

# SX-4433

## RECOMMENDED INTERFACE

