

# Thyristors

## T25



### Technical Data

Typical applications : D.C. Motor control, Controlled rectifiers, A.C. Controllers

| Type No. | V <sub>RRM</sub><br>(Volts) | V <sub>RSM</sub><br>(Volts) |
|----------|-----------------------------|-----------------------------|
| T25/04   | 400                         | 500                         |
| T25/06   | 600                         | 700                         |
| T25/08   | 800                         | 900                         |
| T25/10   | 1000                        | 1100                        |
| T25/12   | 1200                        | 1300                        |
| T25/14   | 1400                        | 1500                        |
| T25/16   | 1600                        | 1700                        |

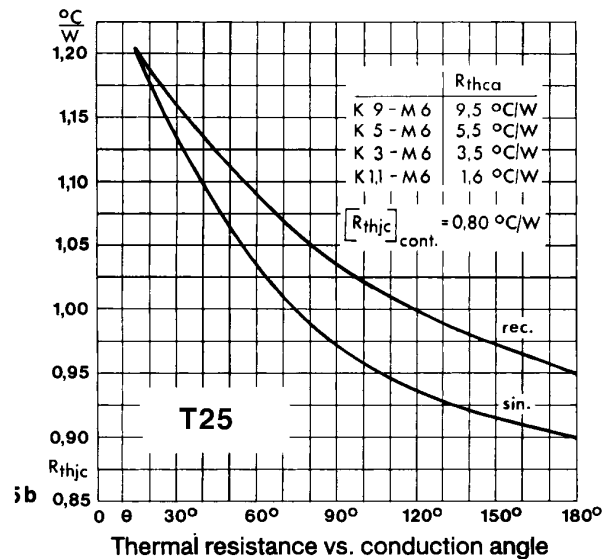
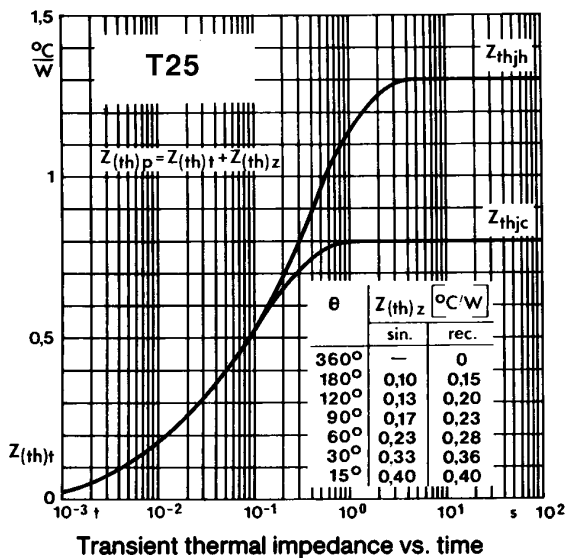
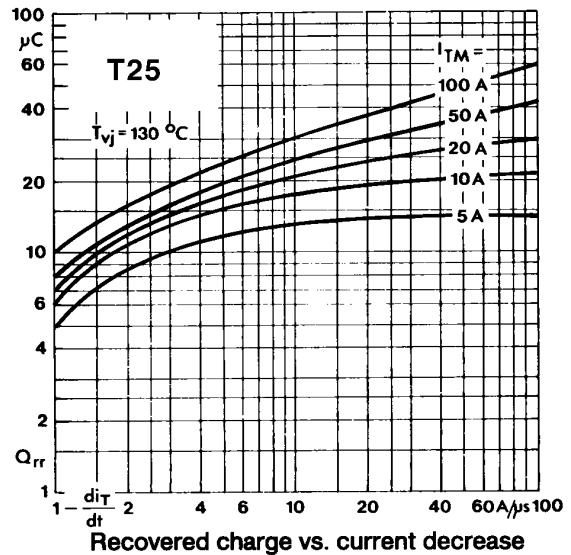
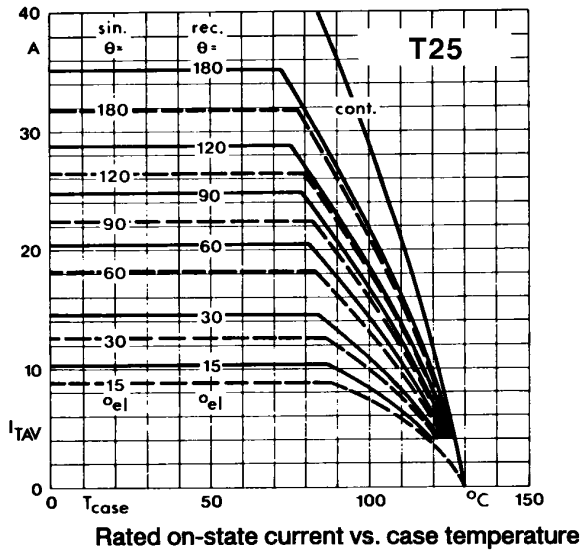
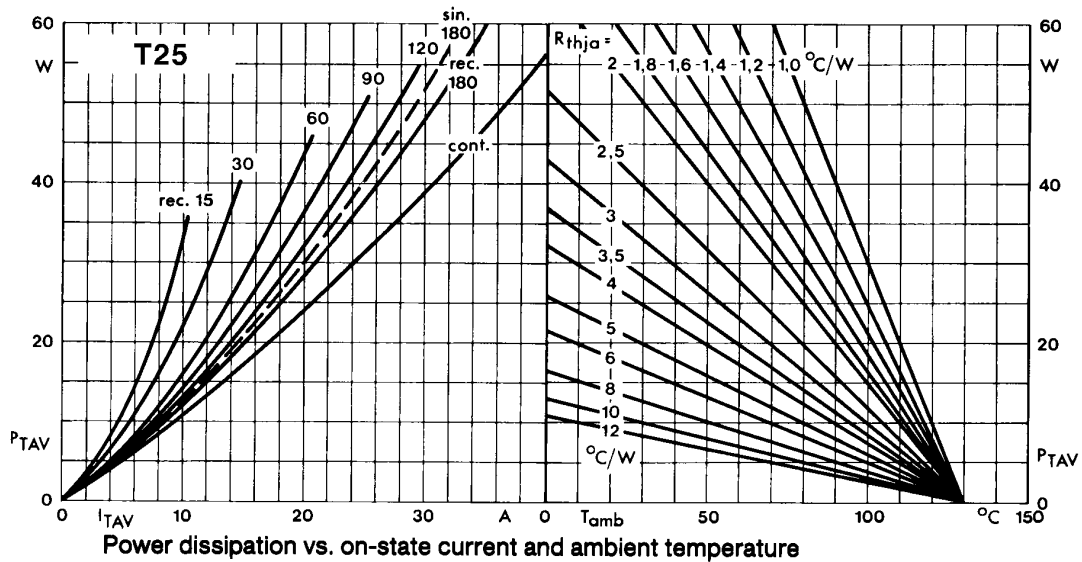
### Features

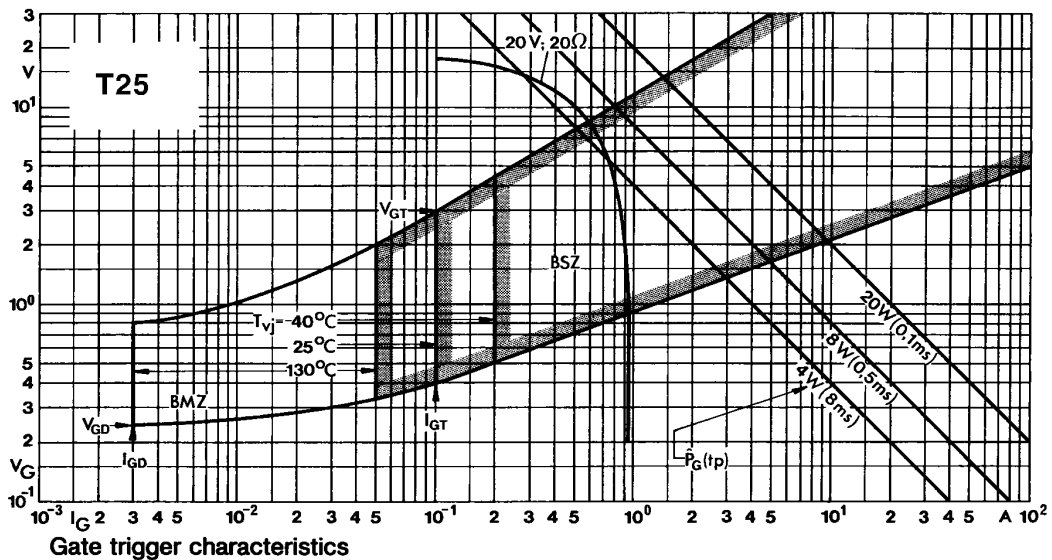
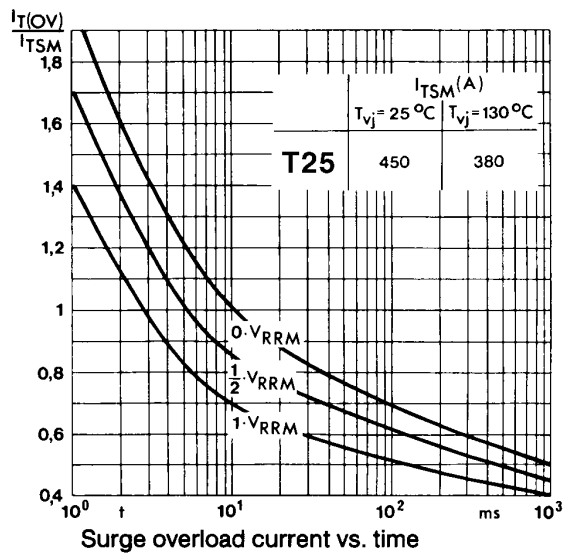
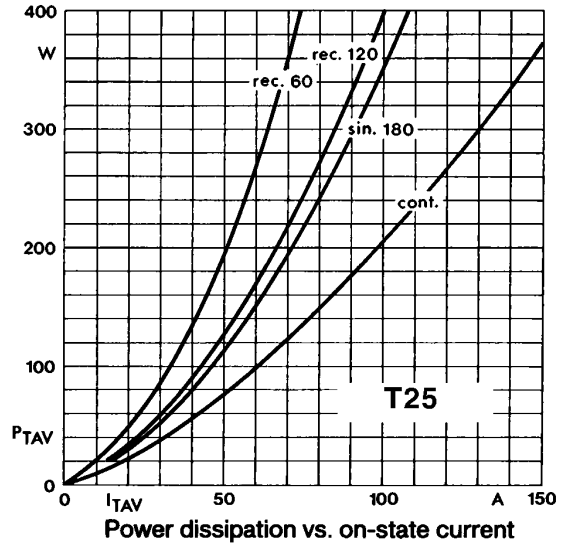
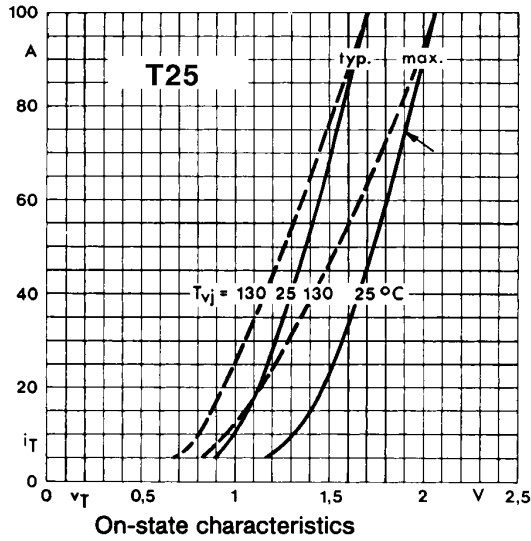
- Hermetic glass to metal seal
- Voltage grade upto 1600V
- Weight 12 gm ( Approx )

| Symbol   | Conditions   | Values   |
|--|--|--|
| I <sub>T(AV)</sub>   | Sin 180 ; T <sub>case</sub> = 94 °C  | 25 A   |
| I <sub>TSM</sub>   | T <sub>vj</sub> = 25 °C<br>T <sub>vj</sub> = 130 °C  | 450 A<br>380 A   |
| I <sup>2</sup> t   | T <sub>vj</sub> = 25 °C<br>T <sub>vj</sub> = 130 °C  | 1000 A <sup>2</sup> s<br>720 A <sup>2</sup> s                              |
| I <sub>GT</sub><br>V <sub>GT</sub><br>dv/dt<br>[di/dt] <sub>CR</sub>                     | T <sub>vj</sub> = 25 °C; V <sub>DRM</sub> = 5V<br>T <sub>vj</sub> = 25 °C; V <sub>DRM</sub> = 5V<br>T <sub>vj</sub> = 130 °C ; Voltage = 67 % V <sub>DRM</sub> | 100 mA<br>3V<br>*200 V/μs<br>50 A/μs                                       |
| V <sub>T</sub><br>V <sub>0</sub><br>R <sub>0</sub><br>I <sub>RRM</sub> /I <sub>DRM</sub> | T <sub>vj</sub> = 25 °C ; I <sub>T</sub> = 75A<br>T <sub>vj</sub> = 130 °C<br>T <sub>vj</sub> = 130 °C<br>T <sub>vj</sub> = 130 °C                             | 1.90 V max<br>1.0V<br>10 m<br>8 mA   |
| I <sub>H</sub><br>I <sub>L</sub>   |  | Typ 80 mA; max. 150 mA<br>Typ 150 mA; max. 300 mA                          |
| R <sub>th(j-c)</sub><br><br>R <sub>th(c-h)</sub><br>T <sub>vj</sub><br>T <sub>stg</sub>  | Cont.<br>Sin 180 / rec. 120  | 0.80 °C/W<br>0.90 / 0.95 °C/W<br>0.50 °C/W<br>+ 130 °C<br>-40.....+ 150 °C |
| Mounting torque  |  | 2.5 Nm   |
| Case outline   |  | N  |

\* Higher dv/dt selection available on request



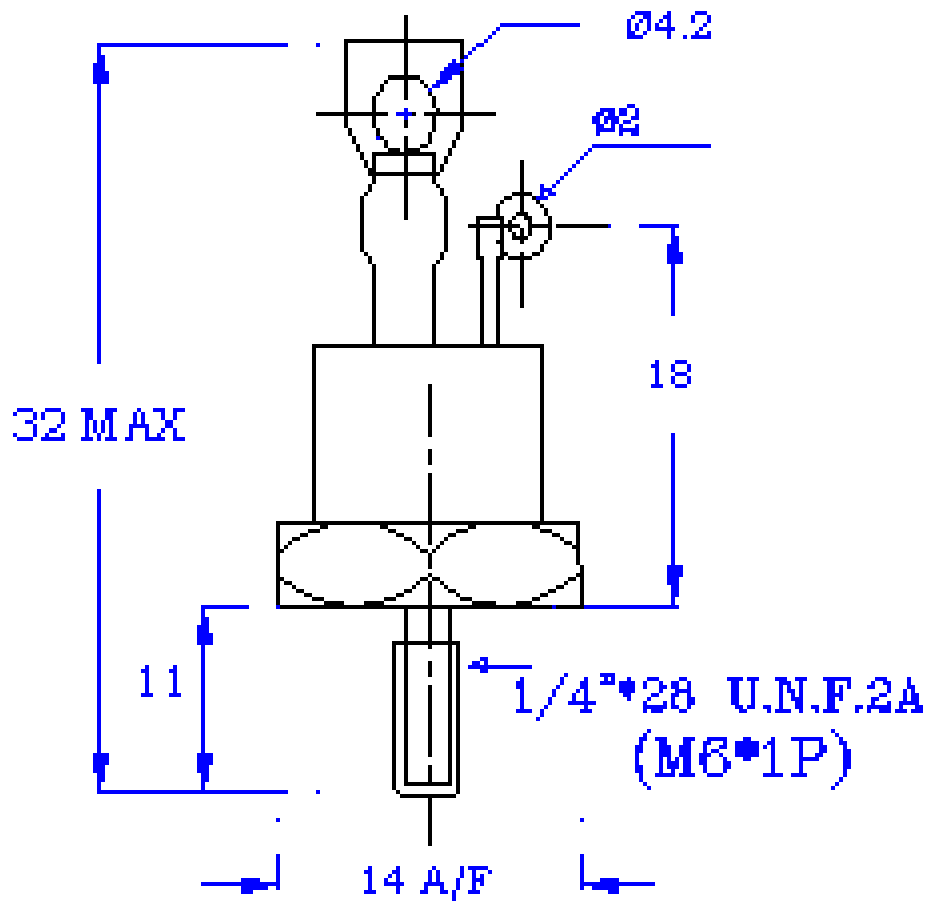




PACAKAGE DEATILS

DO NOT SCALE

All Dimensions in mm



Alt : Also available with pigtail

Mounting Torque: 2.5Nm **N**