

SAW Filter 456.0MHz

Model: TB0492A

Part No: MP01279

REV. NO.: 1

A. MAXIMUM RATING:

1. Operating Temperature: -40°C ~ +90°C
2. Storage Temperature: -40°C ~ +90°C
3. Input Power Level: 10 dBm

B. CHARACTERISTICS:

1. Ambient Temperature: 25 °C
2. Optimal Source Impedance(Balanced): 200 ohms
3. Optimal Load Impedance(Balanced): 200 ohms

Characteristics	Value			Note
	Min.	Typ.	Max.	
Center Frequency F_c MHz	-	456.0	-	-
Minimum Insertion Loss dB		10.2	11.0	
Passband Ripple ($F_c \pm 2.9\text{MHz}$) dB	-	0.8	1.5	-
Passband Ripple ($F_c \pm 5.2\text{MHz}$) dB		1.7	2.0	
Group Delay Ripple ($F_c \pm 5.2\text{MHz}$) nS	-	80	150	-
Absolute group delay (at F_c) uS		0.44		
Attenuation:(Reference level from minimum insertion loss)				dB
1) $F_c \pm 10.0\text{MHz} \dots F_c \pm 43.0\text{MHz}$ dB	37	40	-	-
2) 411 MHz ~ 413 MHz dB	40	53	-	-
3) 393 MHz ~ 411 MHz dB	40	53	-	-
4) 343 MHz ~ 393 MHz dB	42	56	-	-
Temp Coefficient ppm/°C ²				-18

SAW Filter 456.0MHz

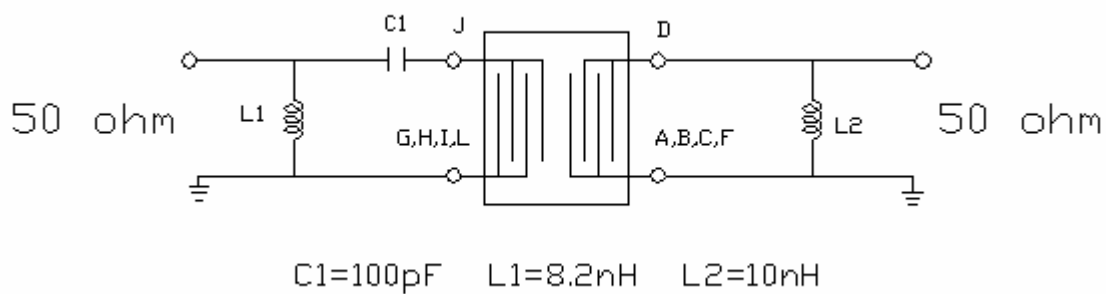
Model: TB0492A

Part No: MP01279

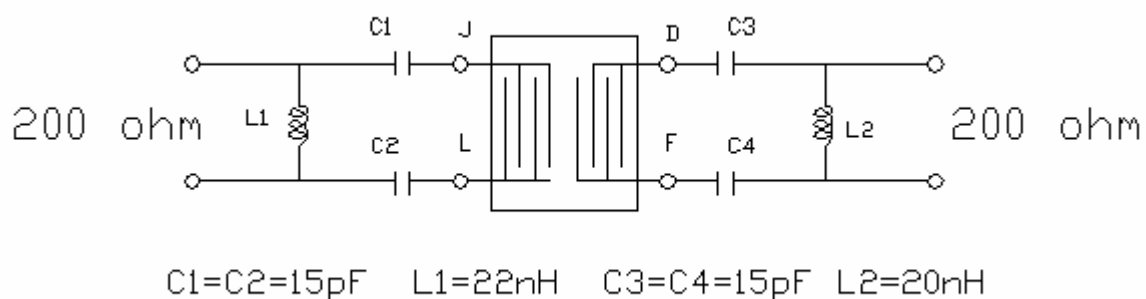
REV. NO.: 1

C. MEASUREMENT CIRCUIT:

(1) Single end 50 ohm to Single end 50 ohm



(2) Balanced 200 ohm to Balanced 200 ohm



SAW Filter 456.0MHz

Model: TB0492A

Part No: MP01279

REV. NO.: 1

D. Frequency Characteristics :

1. S21 Response

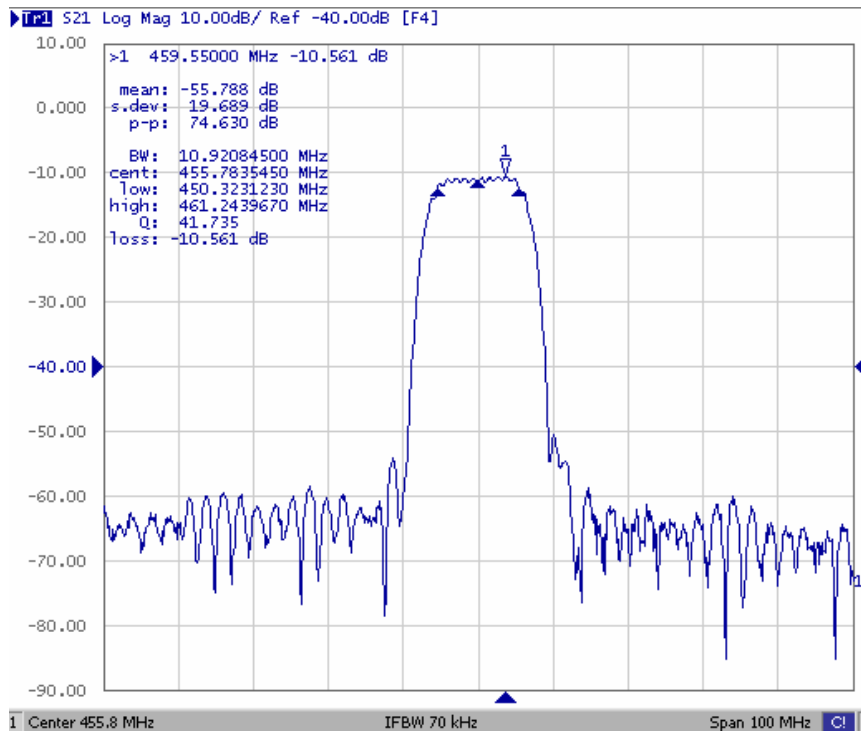


Fig1. Horizontal: 10MHz/Div Vertical: 10dB/Div

2. Pass band Ripple

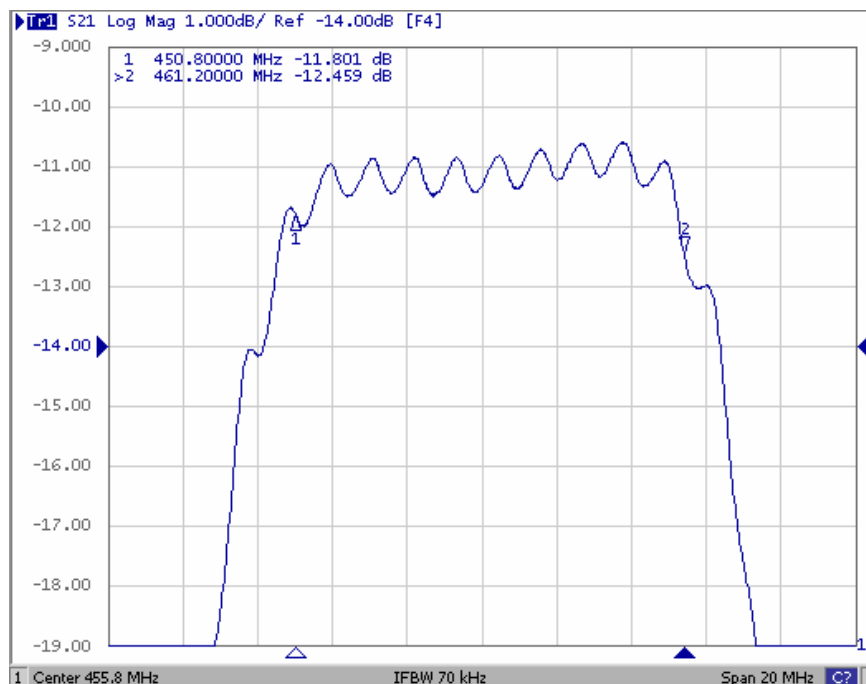


Fig2. Horizontal: 2MHz/Div Vertical: 1dB/Div

SAW Filter 456.0MHz
Part No: MP01279

Model: TB0492A
REV. NO.: 1

3. Group Delay Ripple

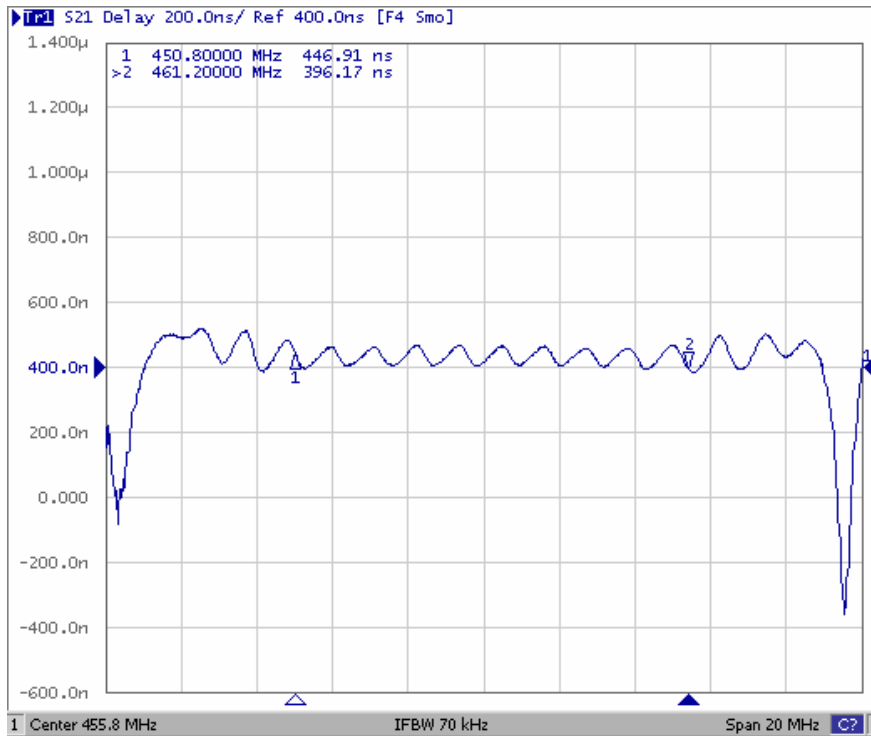


Fig2. Horizontal: 2MHz/Div Vertical: 100nS/Div

4. Wide band Response

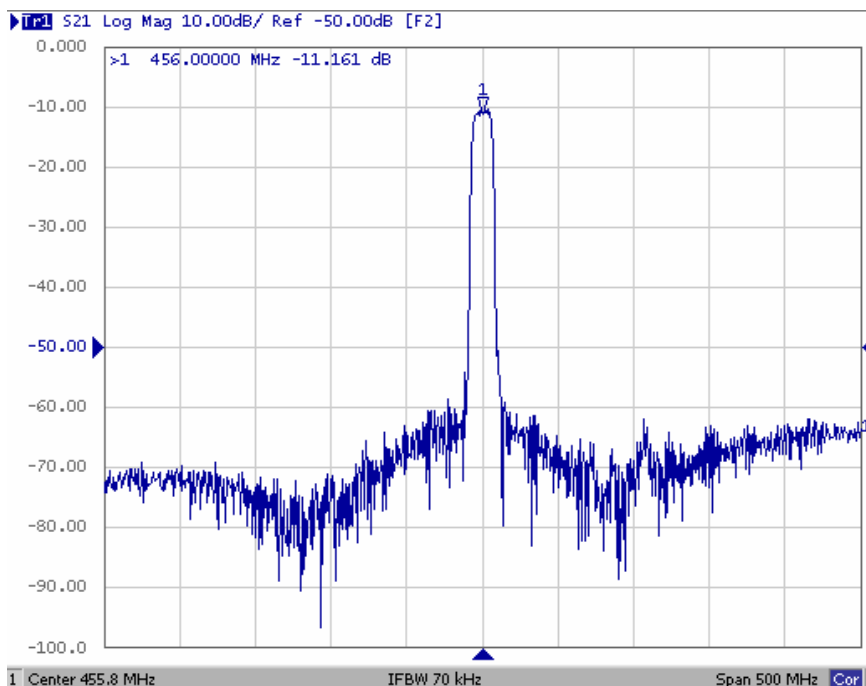


Fig4. Horizontal: 50MHz/Div Vertical: 10dB/Div

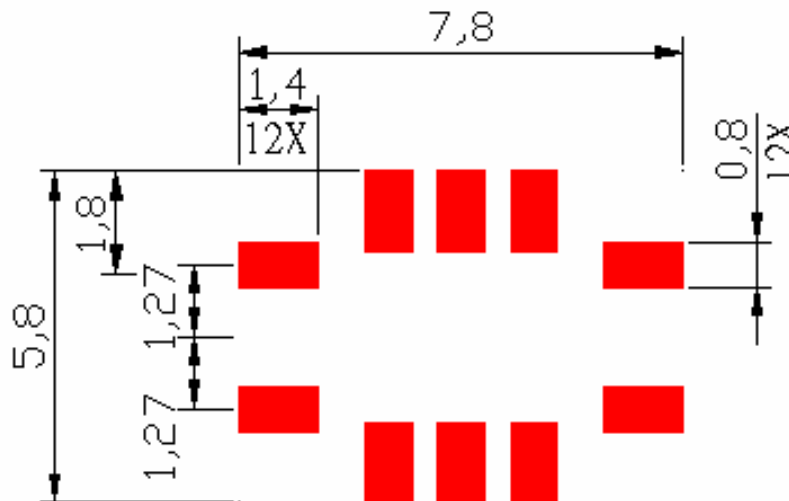
SAW Filter 456.0MHz

Model: TB0492A

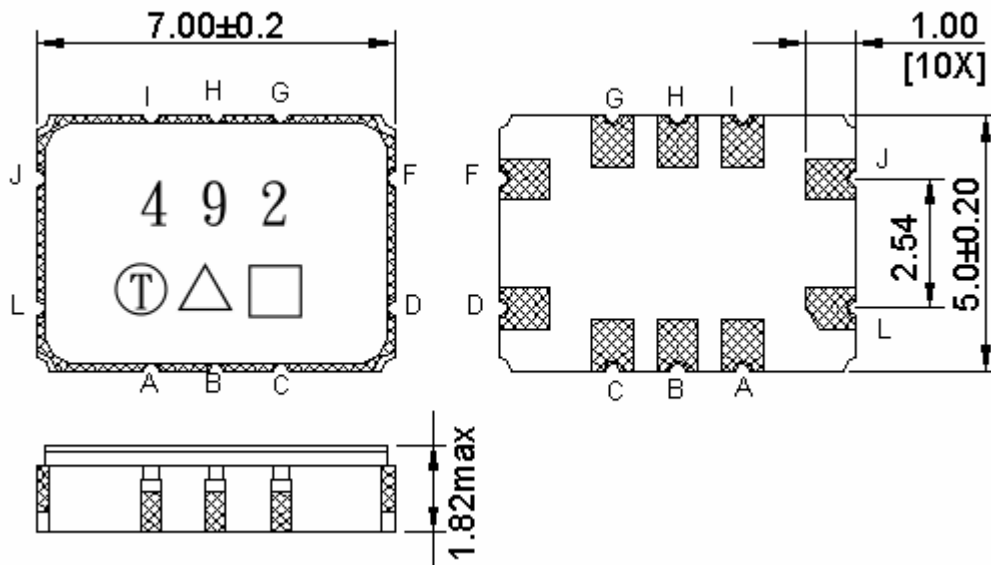
Part No: MP01279

REV. NO.: 1

E. PCB FOOTPRINT:



F. OUTLINE DRAWING:



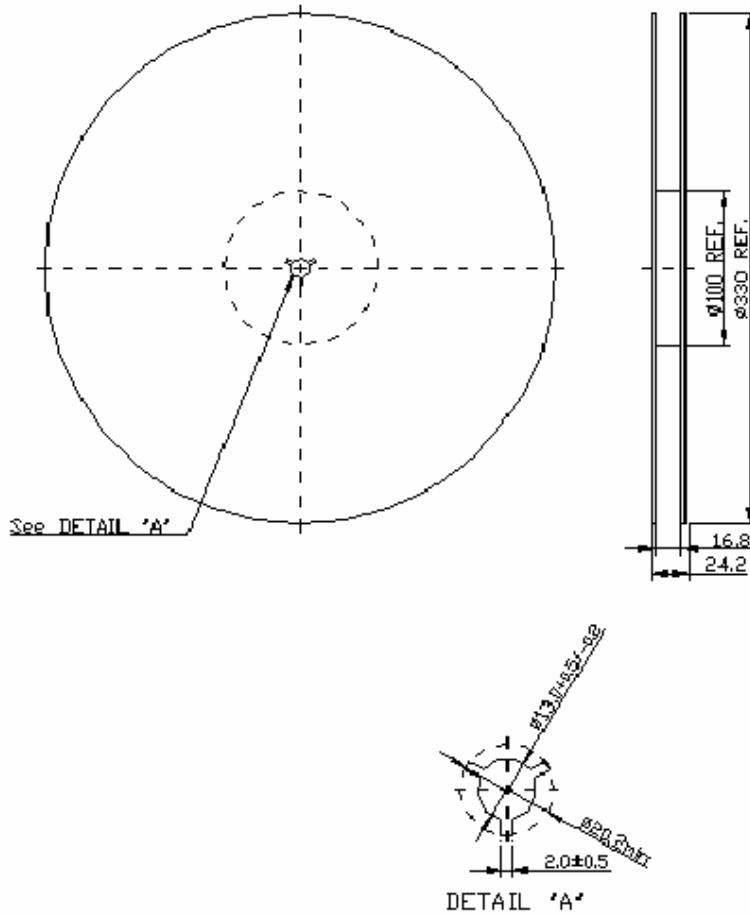
- Pin J : Balanced Input or single ended input
 - Pin D : Balanced Output or single ended Output
 - Pin F : Balanced Input return or single ended Input ground
 - Pin L : Balanced Output return or single ended Output ground
 - Pin A,B,C,G,H,I : To be Ground
- Units: mm

SAW Filter 456.0MHz
Part No: MP01279

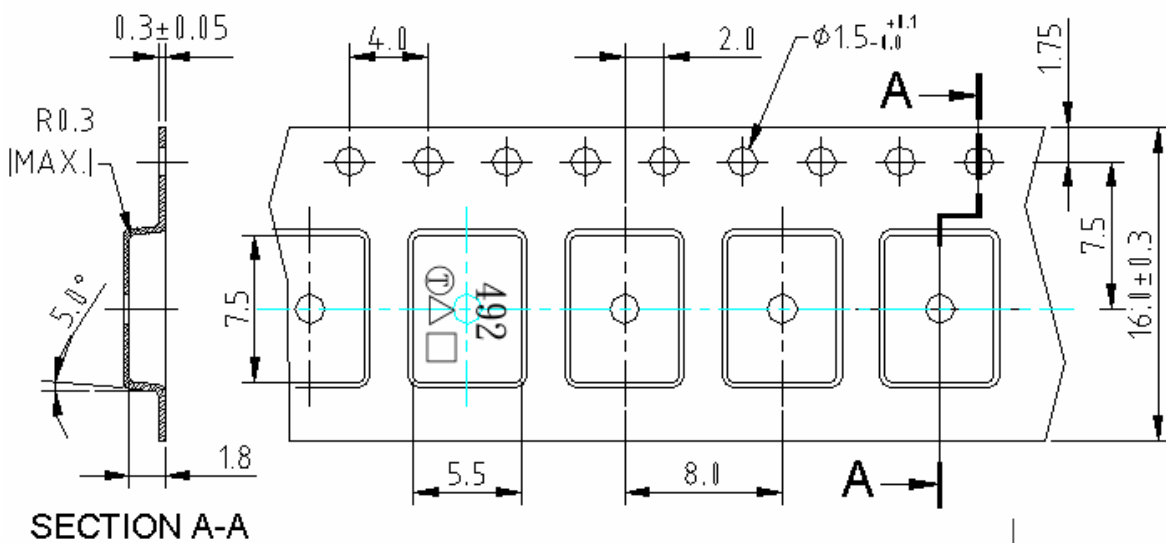
Model: TB0492A
REV. NO.: 1

G. PACKING:

1. REEL DIMENSION



2. TAPE DIMENSION



SAW Filter 456.0MHz

Model: TB0492A

Part No: MP01279

REV. NO.: 1

H. RECOMMENDED REFLOW PROFILE:

