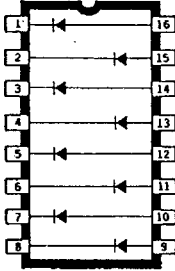


# SERIES TND

## DIODE ARRAYS

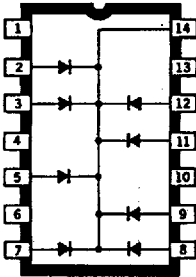


Dwg. No. A-10,903

**TND903**  
**TND908**  
**TND918**

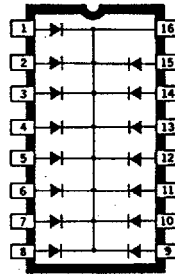
The TND series consists of diode arrays packaged in 14-pin and 16-pin dual in-line plastic packages for easy automatic insertion and better printed circuit board density.

In addition to the diode characteristics for standard products shown here, arrays consisting of diodes with 1N3070, 1N3595, 1N3600, 1N4153, or 1N4447 characteristics can be furnished on request. Other package configurations are available on special order.



Dwg. No. A-13,359

**TND933**  
**TND940**



Dwg. No. A-10,901

**TND905**

### ELECTRICAL CHARACTERISTICS at $T_A = +25^\circ\text{C}$

Device Type	$V_{BR}$	$V_F$		$I_R$		Device Type	$V_{BR}$	$V_F$		$I_R$	
	Min. (V)	Max. (V)	@ $I_F$ (mA)	Max. (nA)	@ $V_R$ (V)		Min. (V)	Max. (V)	@ $I_F$ (mA)	Max. (nA)	@ $V_V$ (V)
TND903	75	1.0	100	—	—	TND933	60	1.0	100	100	40
TND905	100	1.0	10	—	—	TND940	40	1.0	100	100	25
TND908	100	1.0	10	—	—						
TND918	75	1.0	50	—	—						